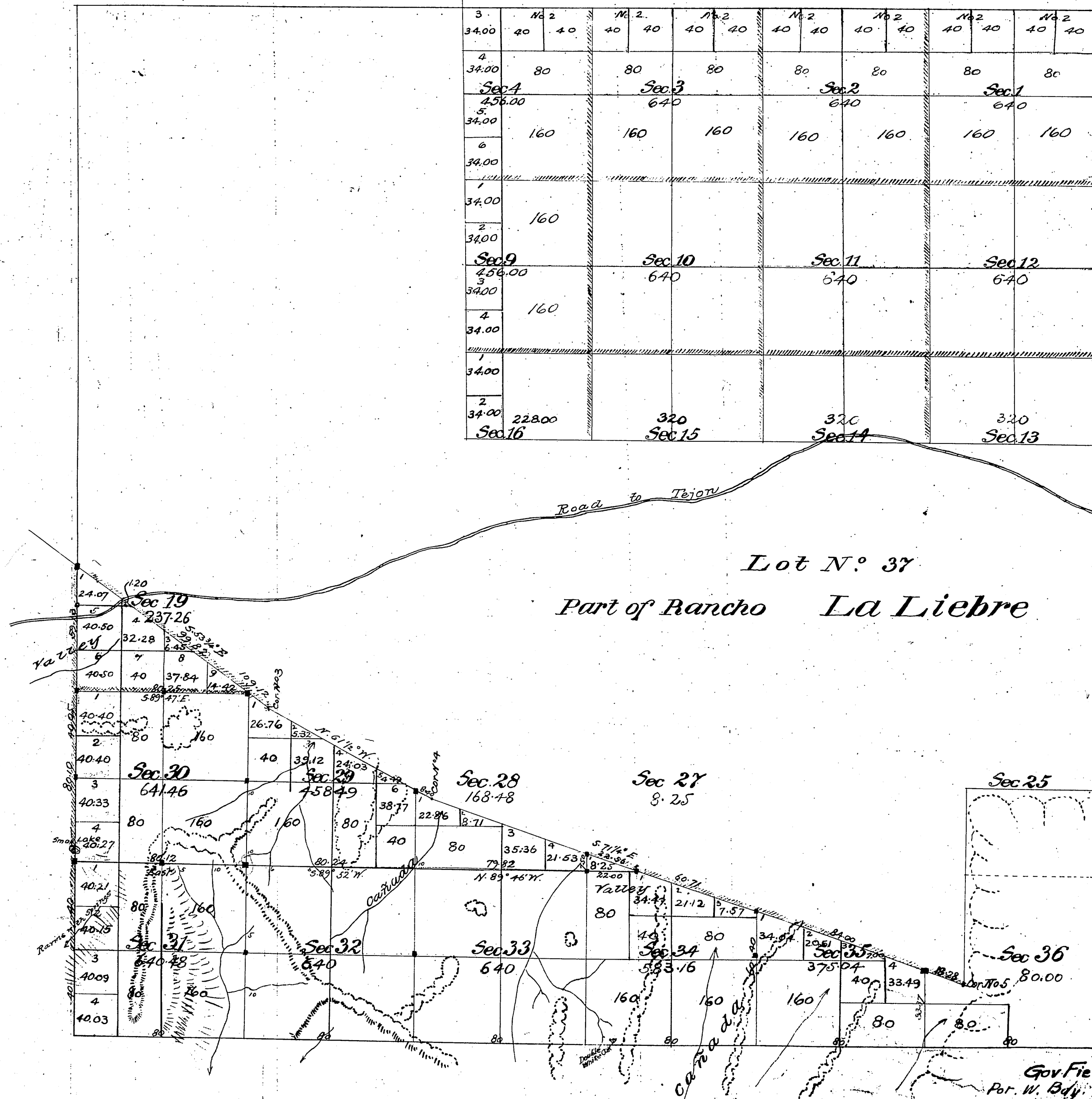


Township N.° 8 North, Range N.° 17 West, San Bernardino Meridian.

T8N
R17W
①



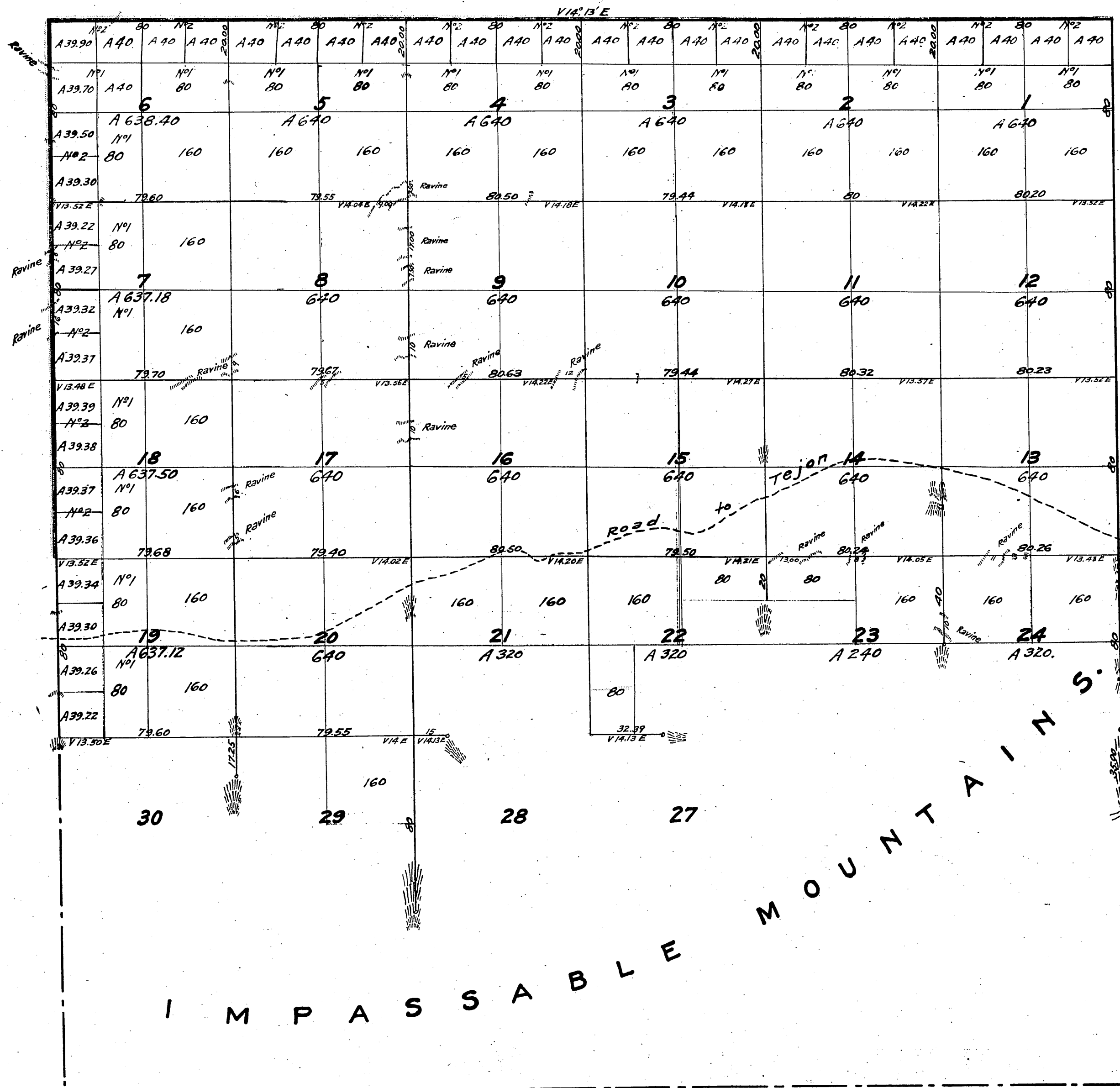
Public Land surveyed by Morris 5940.00 Acres
 " " Collins 4472.62
 Aggregate Area of Public Land 10412.62
 Estimated " " Lot 1737 11913.00
 " " unsurveyed Mountain land 720.88
 Aggregate 23,046.00 Acres

Rec'd by Field Aug. 3rd 1881
 Chas. R. Utterston
 Register

Gov. Field notes See C.S. No. 9027
 Por. W. Bdy. Gov. Field Notes C.S. 9148
 Signed: Theo. Wagner
 U.S. Survey Genl. Cncl.
 Lines of Sec. 31, 32, 33 See C.S. 9176
 Portion of Rancho La Liebre bdy. C.S. 9389

Surveys Designated	By whom Surveyed	Date of Contract	Amount of Surveys	When Surveyed	Magn. Decl.
Part of West bdy. shaded re-survey	Geo. S. Collins	October 21st 1879	2 mis 16 hrs. 23.46	1880	14° 25' E
Section line colored red	"	"	1. 00. 25.	1880	"
" " not shaded	"	"	8. 79. 45.	September 16th 1880	"
Rancho bdy's shaded re-survey	"	"	3. 63. 07.	"	"

Township N° 8 North Range N° 17 West of the San Bernardino Meridian



N. line Sec. 6 and E. and W. lines Twp. 9 N-R. 17 W. C.S. 9376

Aggregate Area of Public Lands (Surveyed) 14,150.20 Acres
Estimated " " Mountain (unsurveyed) 8,876.80. "
Aggregate 23,027.00. "

Meridian line run at
a variation of 14°13' East

Remark Lines colored blue run and paid for under former contract

Surveys Designated	By Whom Surveyed	Date of Contract	Amount of Surveys			When Surveyed
			Miles	chs.	lks.	
West boundary of Township (part)	Ralph W. Morris	October 12 th 1853	3	00	00	1853 (Resurveyed) 1855
North " " "	" " "	" " "	6	00	00	" " "
East " " " line (in part)	" " "	December 23 rd 1854	4	35	00	1855
West " " " "	" " "	Special instructions Aug. 1 st 1855	1	00	00	"
Section lines	" " "	" " "	40	42	65	"

The above Map of Township N° 8 North Range N° 17 West (of the San Bernardino Meridian) is strictly conformable to the field notes of the Surveys thereof on file in this Office which have been examined and approved
Surveyor General's Office
San Francisco, California
February 19th 1856

John A. McWay
Surveyor General

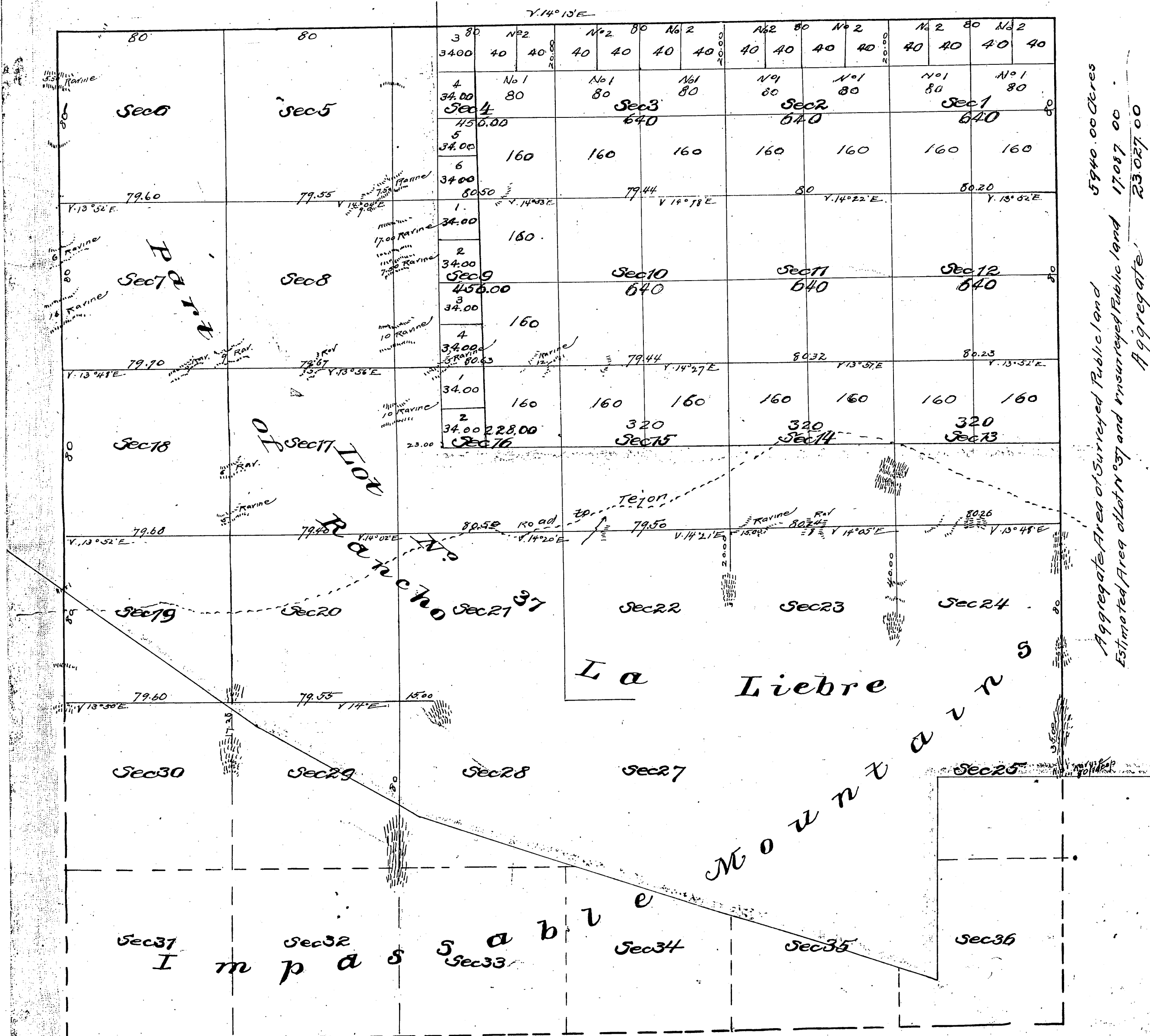
Township N^o 8 North,

Range N^o 17,

San Bernardino Meridian.

T8N
R17W

③



Note:
The areas of fractions of surveyed public land in Secs 19, 20, 21, 22, 23, 24, 25, 26, 27, 28, 29, 30, 31, 32, 33, 34, 35, 36, outside of Private Grant can not be computed for want of connection bet ween the boundaries of said Grant and the Township and Section lines.

Meridians all run at a Variation of 14° 30' East.

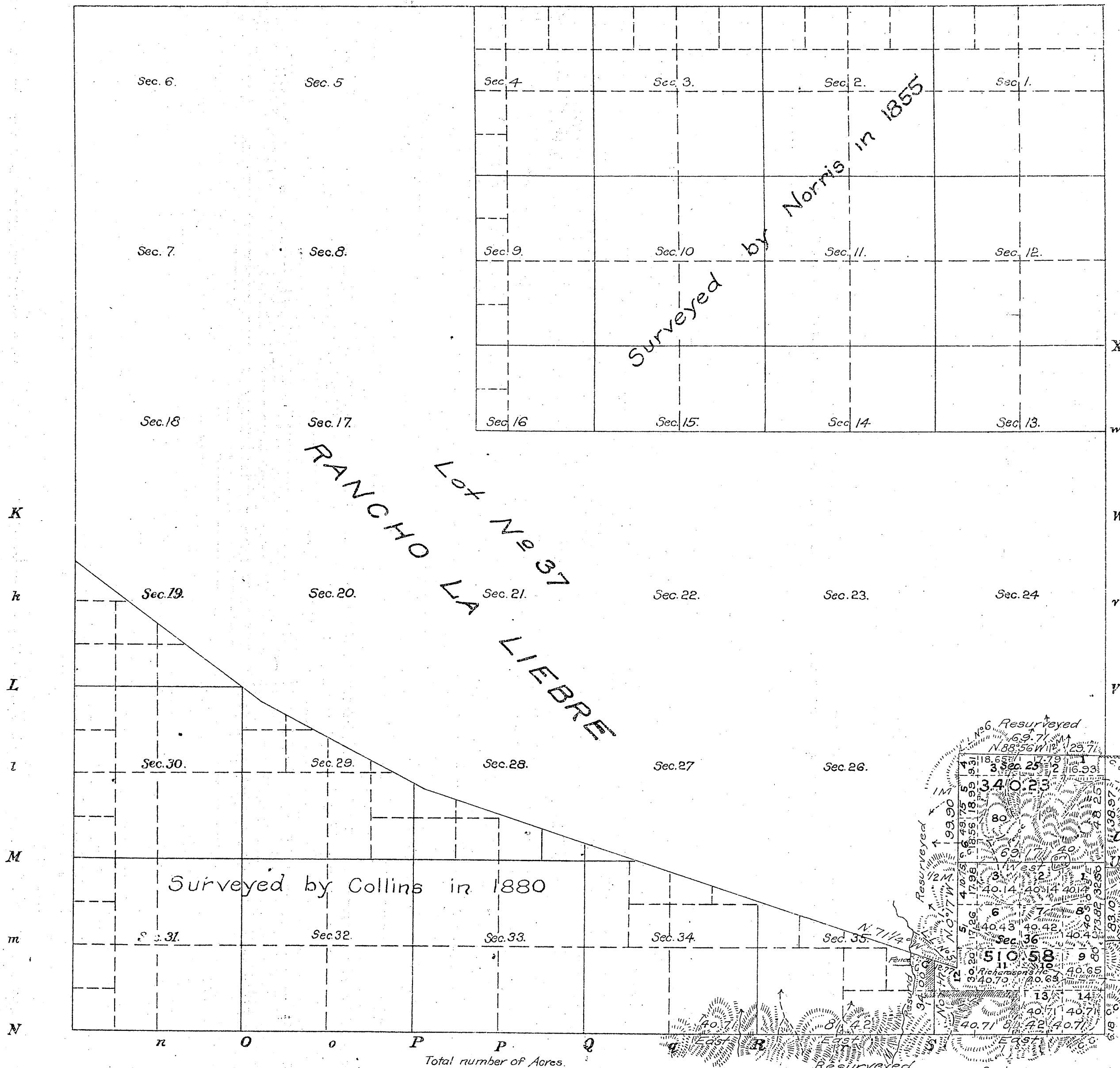
Surveys Designated	By whom Surveyed	Date of Contract	amt of Surveys	When Surveyed
West Bound ^{ry} of Twp. (part)	Ralph W. Norris	Oct. 12 th 1853	3 m 15 000 000 1/10	1853 (resurveyed) 1856
North "	"	"	6 . 00 . 00 .	"
East " (in part)	"	Dec 23 rd 1854	4 . 38 . 00 .	1855
West "	"	Spec Instr 704 of 1855	1 . 00 . 00 .	"
Section lines	"	"	40 . 42 . 65 .	1862
Boundaries of Lot N ^o 37	G. H. Thompson	June 15 th 1862	"	"

Per W. bdy Twp. C.S. 9148

N. Bdy of Twp. See C.S. 9107 Co. Line.
N. & W. bdy of Twp. See C.S. 9116
Fld. Notes of Twp. 45 line La Liebre C.S. 9115.

TOWNSHIP N^o 8 N. RANGE N^o 17 W. SAN BERNARDINO MERIDIAN, CALIFORNIA.

C.S. 9309 - S. bdy. Ro. La Liebre in Sec. 25



Area	
Public Land previously surveyed	10,412.62 Acres
" " surveyed by Duee	850.81 "
Estimated Area Lot N ^o 37	11,913.00 "
Aggregate	23,176.43 "

The line of demarcation between the areas previously counted in total acreage surveyed and the new surveys, is indicated thus

Fractional Sections 19, 29, 28, 27, 34 and 35, and Sections 30, 31, 32 and 33, are within the Santa Barbara National Forest. Proclamation, June 26, 1908 filed in U. S. Land Office, Los Angeles, Cal.

Nov. 3 1910
Wm. S. Graham
Register

Lat. 34° 44' N.
Long. 118° 38' W.
Mag. Decln. 15° 15' E. } in S. E. 1/4 Sec. 36.

The above map of Township N^o 8 North, of Range N^o 17 West, San Bernardino Meridian, California, is strictly conformable to the field notes of the survey thereof, on file in this Office, which have been examined and approved. U. S. Surveyor General's Office, San Francisco, California. March 25, 1910

W. S. Graham.
U. S. Surveyor General for California.

I hereby certify the above to be a full, true and correct copy of the original map of Township N^o 8 North, Range N^o 17 West, San Bernardino Meridian, California, approved March 25, 1910, and on file in this Office.

Witness my hand and official seal
U. S. Surveyor General's Office
San Francisco, California
August 2, 1910
U. S. Surveyor Genl.
for California

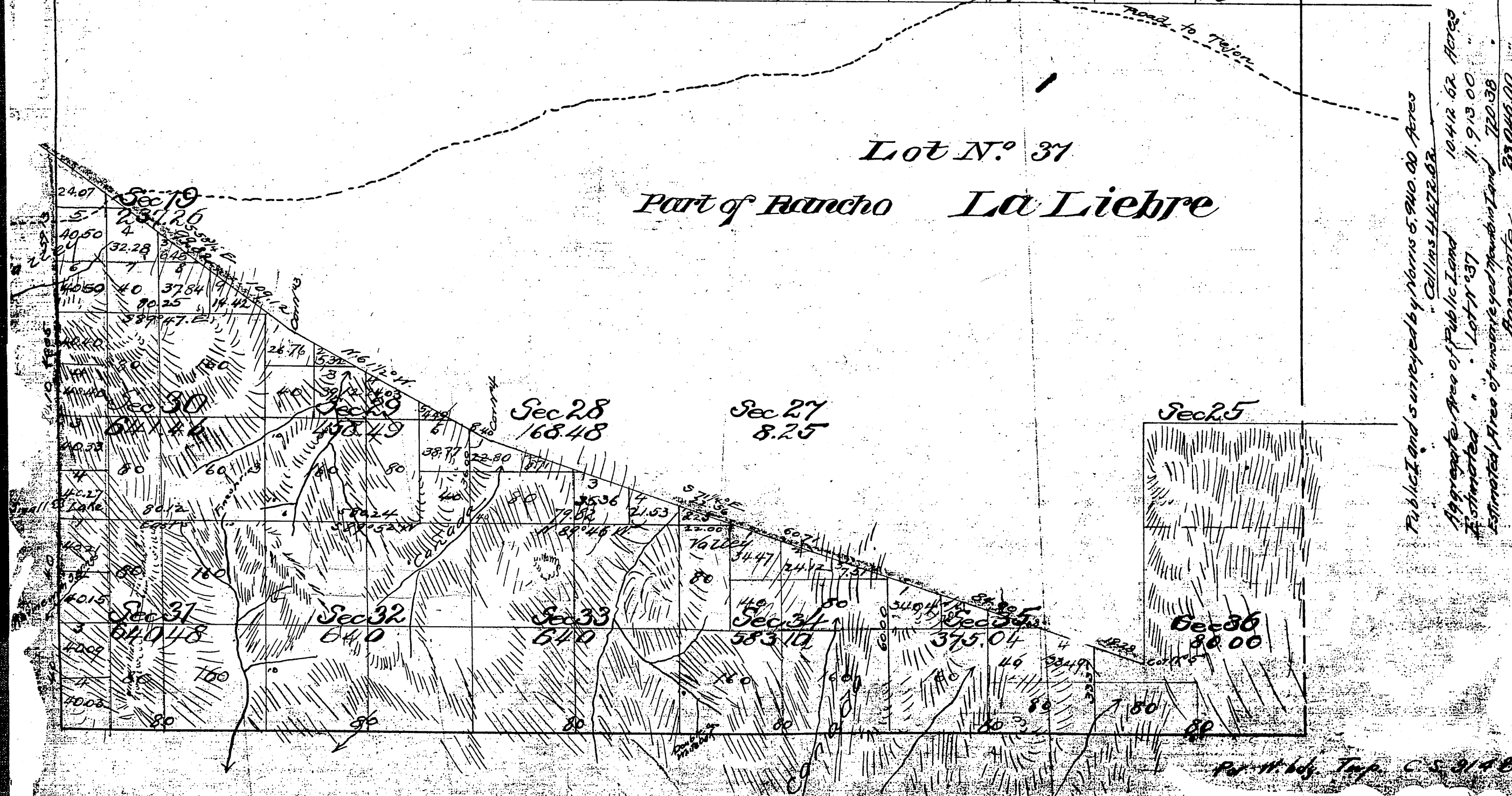
Surveys Designated	By Whom Surveyed	Contract		Amount of Surveys			When Surveyed	
		No	Date	M.	Or.	Ac.	Began	Completed
Lines previously surveyed, exhibited on Maps approved February 19, 1856 and May 11, 1881.								
E. bdy. of Tp. resurvd	James M. Duee	1823 252	Oct. 19, 1881 & Sept. 25, 1906	1	48	25	Jan. 26, 1903	Jan. 26, 1903
S " " " "	"	"	"	2	43	55	" 22 "	" 24 "
Rancho Lines "	"	"	"	2	09	61	" 27 "	" 28 "
Section " "	"	"	"		34	00	" 28 "	" " "
" " new	"	"	"		69	17	" 29 "	" 29 "
Connecting Lines	"	"	"		22	92	" " "	" " "

Township N.° 8 North, Range N.° 17 West, San Bernardino Meridian.

[illegible]

Lot N.º 37

Part of Rancho La Liebre



<i>Surveys Designated</i>	<i>By whom surveyed</i>	<i>Dated of Contract</i>	<i>Amount of Surveys, Acres Surveyed</i>				<i>Approx. Date</i>
<i>Part of West side shaded red</i>	<i>Geo. S. Collins</i>	<i>October 21st 1879</i>	<i>24 1/2</i>	<i>102 1/2</i>	<i>83 1/2</i>	<i>1880</i>	<i>Jan. 25th 1880</i>
<i>Section line colored red</i>	"	"	<i>1 1/2</i>	<i>00</i>	<i>25</i>	<i>1880</i>	"
<i>Section lines not shaded</i>	"	"	<i>8</i>	<i>19</i>	<i>45</i>	<i>1880</i>	"
<i>Gravelly side shaded red</i>	"	"	<i>3</i>	<i>1</i>	<i>83</i>	<i>00</i>	"