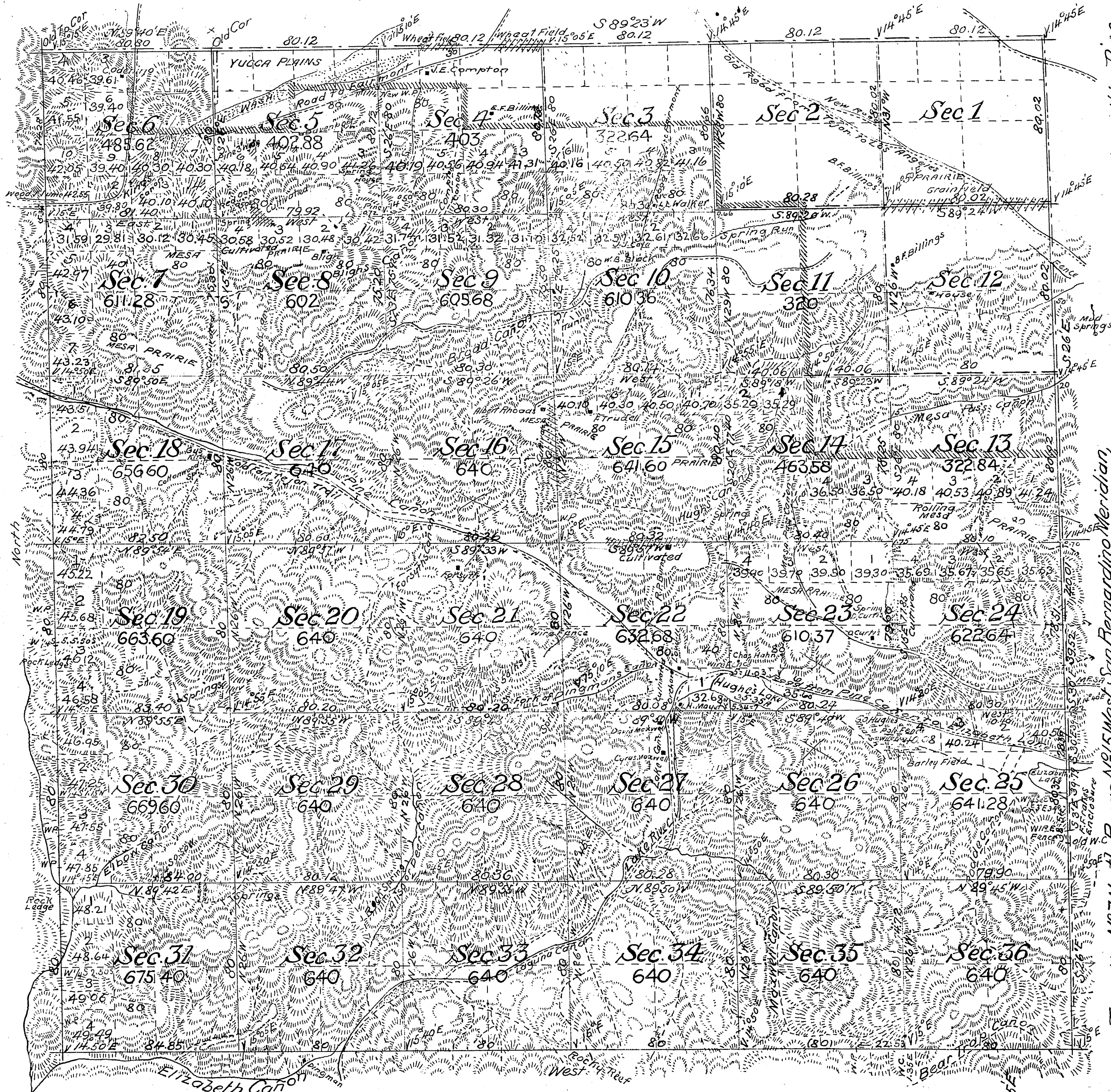


# Township N<sup>o</sup> 7 North, Range N<sup>o</sup> 15 West, San Bernardino Meridian, Cal. ①

T7N-R15W



For details of the earlier surveys in this Township see Map approved February 19, 1856

Surveys Designated	By whom surveyed	Date of Contract	No.	Amount of Surveys	When surveyed
North Boundary of Township surveyed	R. W. Norris	Dec. 23, 1854			1855
East " surveyed in part	"	"			"
Subdivision lines	"	"			"
North Boundary of Township re-surveyed	W. H. Norway	August 25, 1884			1884
East " in part	"	"			"
East " surveyed (new) in part	"	"			"
South and West Boundaries surveyed	"	"			"
North Boundary re-surveyed	C. A. Ensign	May 28, 1889			1890
East " in part	"	"			"
East " surveyed in part (new)	"	"			"
South " (new)	"	"			"
West " (new)	"	"			"
Subdivision lines re-surveyed in part	"	"			"
surveyed (new)	"	"			"
Connecting lines	"	"			"
Meander lines	"	"			"

## Gov't. Field Notes

C.S. 9091 - Bet. Secs. 10 & 11 and all lines (except Township, exterior) of Secs. 6, 7, 13 to 36. Also meander of Hughes Lake in Sec. 22 & 23 C.S. 9106 No. Line of Sec. 1. C.S. 9114 W. Bdy of TWP & N. Line Sec. 6 C.S. 9206 North Twp. line.

The above Map of Township N<sup>o</sup> 7 North Range N<sup>o</sup> 15 West, San Bernardino Meridian, California, is strictly conformable to the field notes of the surveys thereon filed in this Office, which have been examined and approved.

U.S. Surveyor General's Office,  
San Francisco, California

March 24, 1900

Interior lines See C.S. 9199

S. bdy. of TWP - C.S. 9273

Bdy. line of the San Gabriel National Forest - C.S. 9389

The line of demarcation between areas previously counted in total acreage surveyed and the new surveys is represented thus

J. M. Gleaves  
U.S. Sur. Gen'l Cal.

Note - All of Township within Pine Mountain & Zaca Lake Forest Reserve - Proclamation June 29, 1898

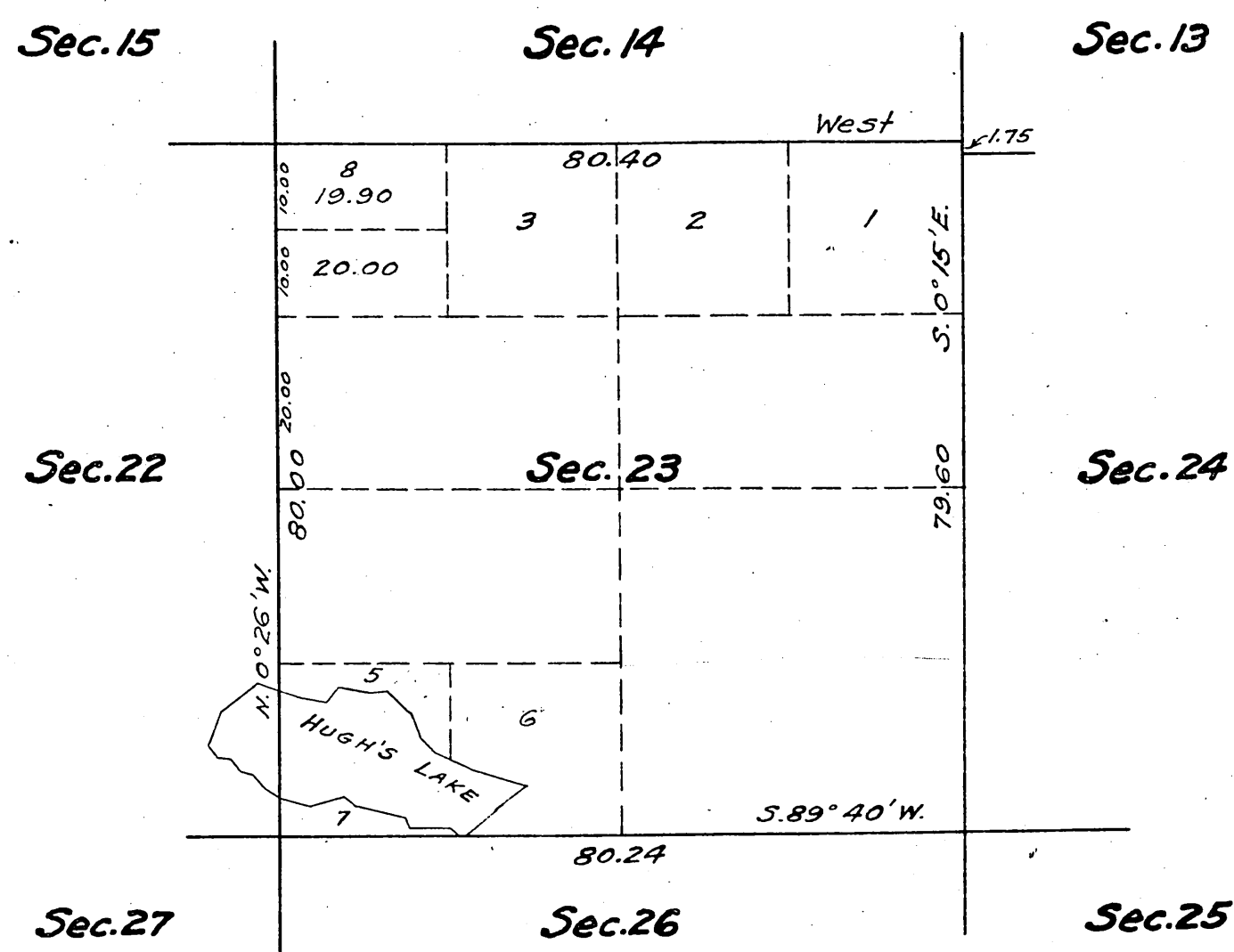
Area of Public Land previously surveyed 3,680.00 Acs  
" " " surveyed under current contract 19,283.65 "  
" " " Late 35.35 "  
Aggregate 22,999.00

Filed in U.S. Land Office - at Los Angeles  
Nov. 21, 1900

(4-675 a)

Supplemental Plat of Section 23,  
Township N°7 North, Range N°15 West, San Bernardino Meridian, California.

Scale: 20 chains = 1 inch.



NOTE:  
This supplemental plat is authorized by letter "E" dated March 24, 1916, and is for the purpose of furnishing a proper description in patent to Frank R. Myrick, Los Angeles 013503.

Filed in U. S. Land Office,  
Los Angeles, Cal.  
APR. 22, 1916.

John D. Roche,  
Register.

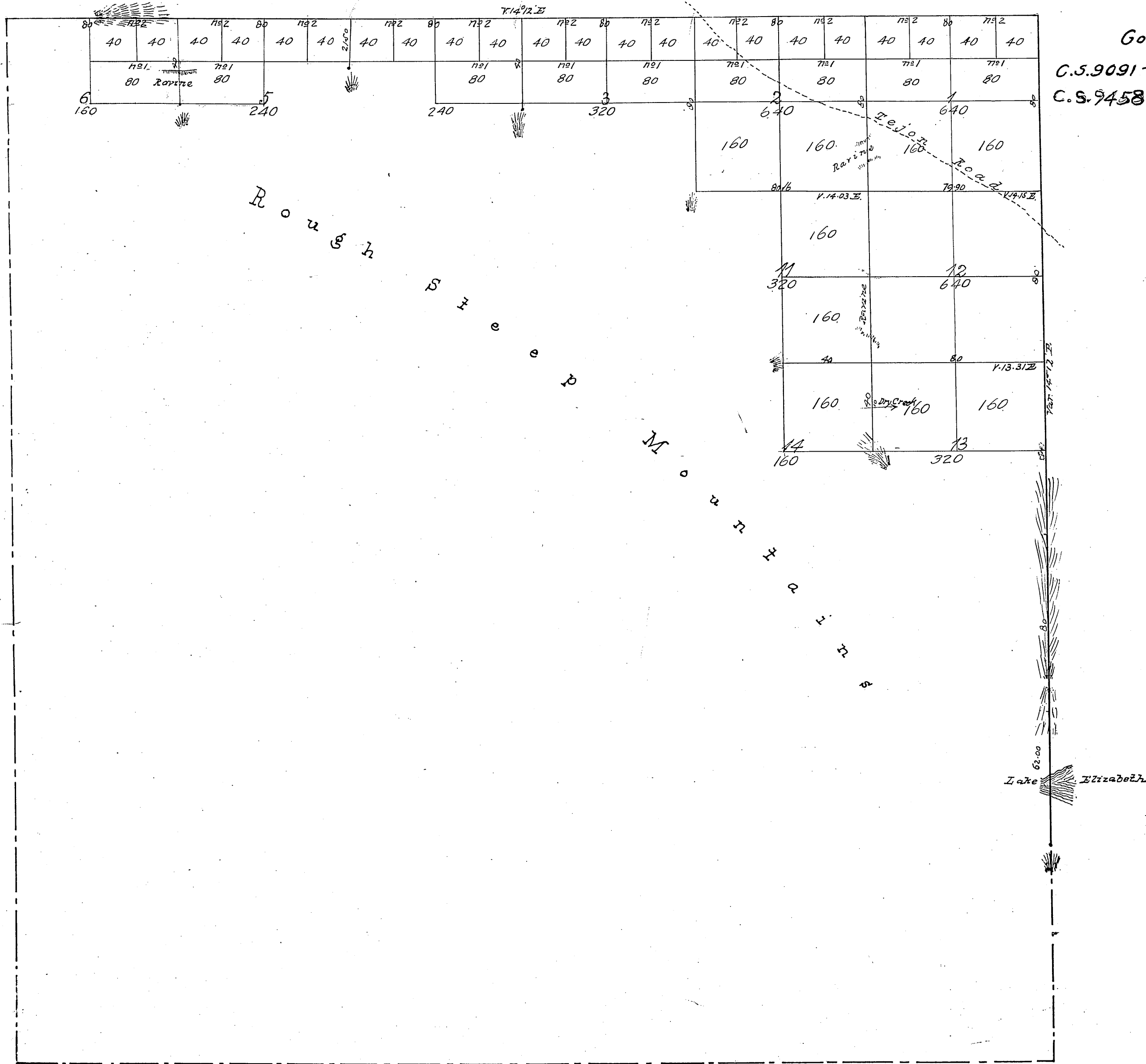
TRUE MERIDIAN

Township N<sup>o</sup> VII North Range N<sup>o</sup> XV West of the San Bernardino Meridian.

T7N  
R15W

Gov't. Field Notes (3)

C.S. 9091 - Bet. Sec's 13 & 14 and 11 & 14  
C.S. 9458



Meridians are run on a Var. of 14° 12' East.

Surveys Designated	By Whom Surveyed	Date of Contract	Amount of Surveys	When Surveyed
Township Lines	Ralph W. Norris	December 23 <sup>rd</sup> 1854	Miles Chs. Lks 10. 62. 00	1855
Sections "	" " "	" " "	8. 21 56	"

Aggregate Area of Public Lands surveyed 3,680.00 Acres.  
Estimated " " Mountain " Unserved 19,360.00 "  
23,040.00 "

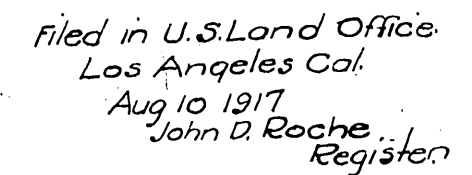
Signed:-

John C. Hays  
Surr. Genl. Cal.



*G f F e E d D c C b B a A*

Sec.12



Areas in Acres	
Public Land	
Indian Reservation	
Indian Allotments	
Mineral Claims	
Water Surface	
Total Area.	

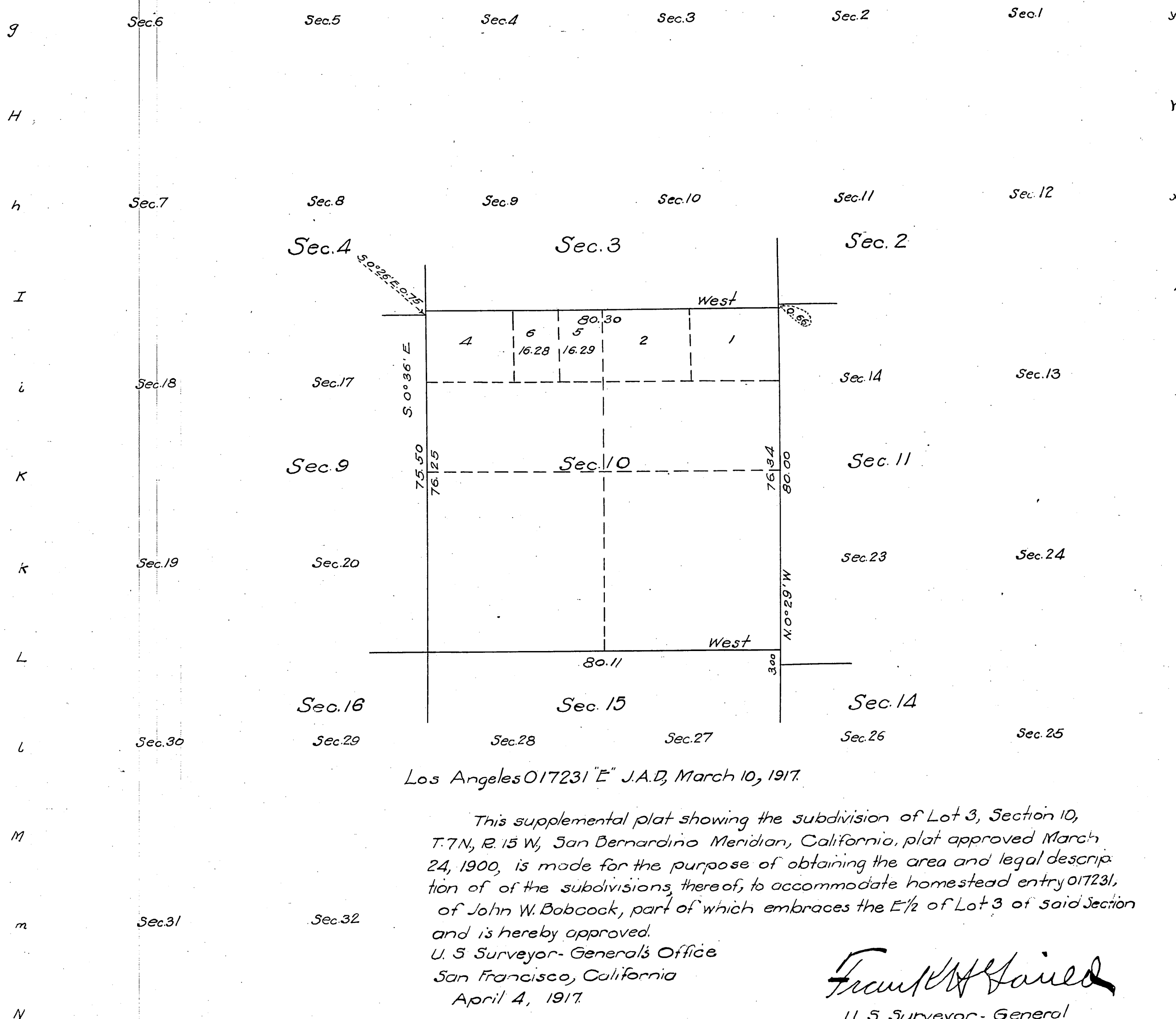
Scale 40 Chains to an inch.  
Mean Magnetic Declination.

[illegible]

Surveyor General.

Received  
U.S. Land Office  
Los Angeles Cal  
Date April 23-1917  
Hour 9 AM.

*d*                      *D*                      *c*  
Scale: 20 chains = 1 inch.



Filed in U. S. Land Office.  
Los Angeles Cal.  
April 23. 1917.  
John D. Roche  
Register

Areas in Acres	
Public Land	
Indian Reservation	
Indian Allotments.	
Mineral Claims.	
Water Surface.	
Total Area.	

Scale 40 Chains to an inch.  
Mean Magnetic Declination

[illegible]

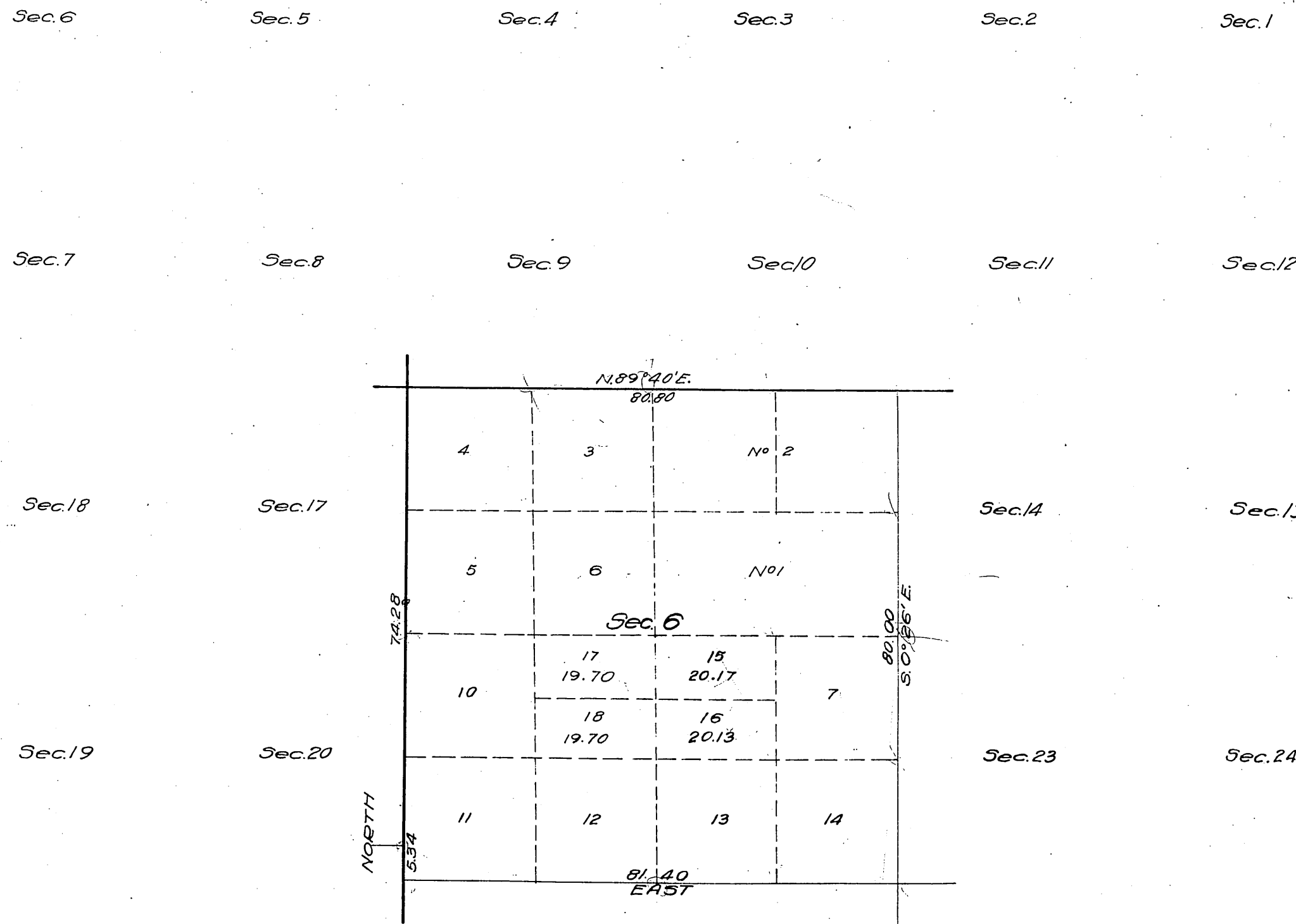
The above map of Township N<sup>o</sup>                      Range N<sup>o</sup>                      of the  
Meridian                      is strictly conformable to the field notes of the survey thereof  
on file in this office which have been examined and approved  
U. S. Surveyor General's Office.

Surveyor-General.

Supplemental Plat of Section 6,  
Township N<sup>o</sup> 7 North, Range N<sup>o</sup> 15 West, San Bernardino Meridian, California

T. 7 N.  
R. 15 W.  
6

Scale 20 chains to an inch.



This supplemental plat is authorized  
by the Commissioner of the General  
Land Office by letter  
"E" JAD dated May 3, 1920

Sec. 30  
Sec. 29  
Sec. 31  
Sec. 32

This supplemental plat, showing the subdivision of lots 8 and 9, Sec. 6, T. 7 N., R. 15 W., San Bernardino Meridian, California, plat approved March 24, 1900 is made for the purpose of obtaining the area and legal description of the subdivision thereof to accommodate homestead entry Los Angeles 026836 of James A. McIntire, which embraces the N<sup>1</sup>/<sub>2</sub> of above lots of said section,

and is hereby approved.

U. S. Surveyor General's Office  
San Francisco California

May 21, 1920.

U. S. Surveyor General for Cal.

Filed in U. S. Land Office  
Los Angeles, Cal.  
June 25 1920  
H. L. Groves  
Register.

Areas in Acres	
Public Land	
Indian Reservation	
Indian Allotments	
Mineral Claims	
Water Surface	
Total Area	

0 10 20 40 60

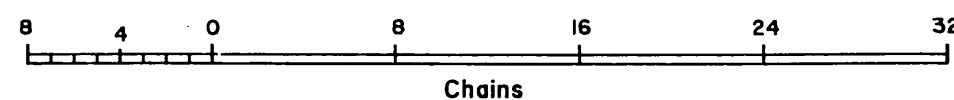
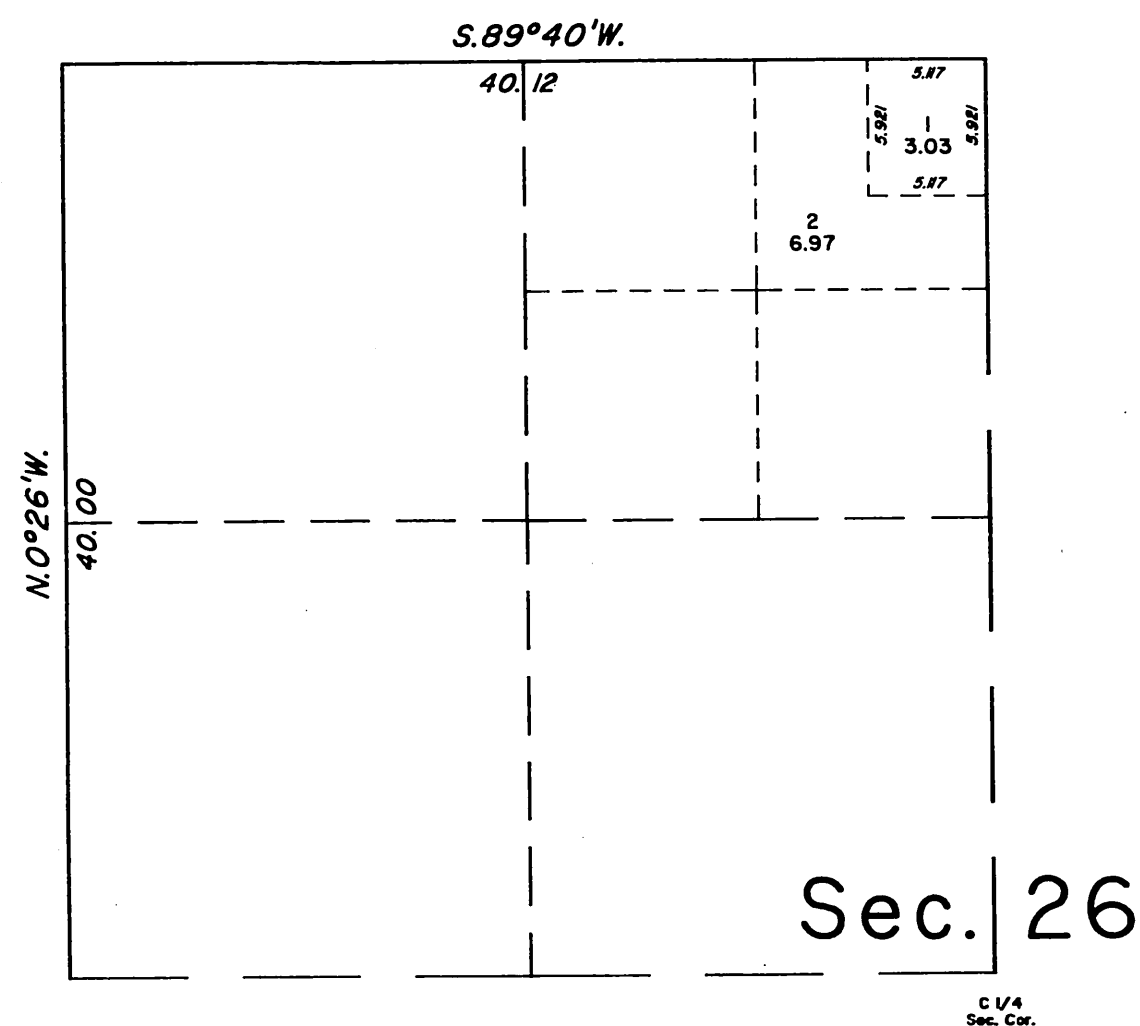
Scale 40 Chains to an inch  
Mean Magnetic Declination.....

Surveys Designated	By whom Surveyed	Group		Amount of Surveys Mls. chs. lks.	When Surveyed	
		No	Date		Began	Completed

The above map of Township N<sup>o</sup> ..... Range N<sup>o</sup> ..... of the .....  
Meridian ..... is strictly conformable to the field notes of survey  
thereof on file in this office, which have been examined and approved  
U. S. Surveyor General's Office  
Surveyor General.

TOWNSHIP 7 NORTH, RANGE 15 WEST, OF THE SAN BERNARDINO MERIDIAN, CALIFORNIA.

SUPPLEMENTAL PLAT OF THE NW 1/4 OF SECTION 26



This supplemental plat corrects and supersedes the Supplemental Plat accepted April 28, 1995.

This supplemental plat, showing new lots in the NW 1/4 of section 26, Township 7 North, Range 15 West, San Bernardino Meridian, California is based on the township plat approved March 24, 1900.

This plat was prepared, pursuant to the request of the Angeles National Forest, dated March 16, 1995, to facilitate a land exchange with the Trust for Public Land.

UNITED STATES DEPARTMENT OF THE INTERIOR  
BUREAU OF LAND MANAGEMENT  
Sacramento, California

This plat, showing new lottings, is based upon the official record, and having been correctly prepared in accordance with the regulations of this Bureau, is hereby accepted.

For the Director  
*James J. Buhay*  
May 31, 1995  
Acting Chief Cadastral Surveyor-California