

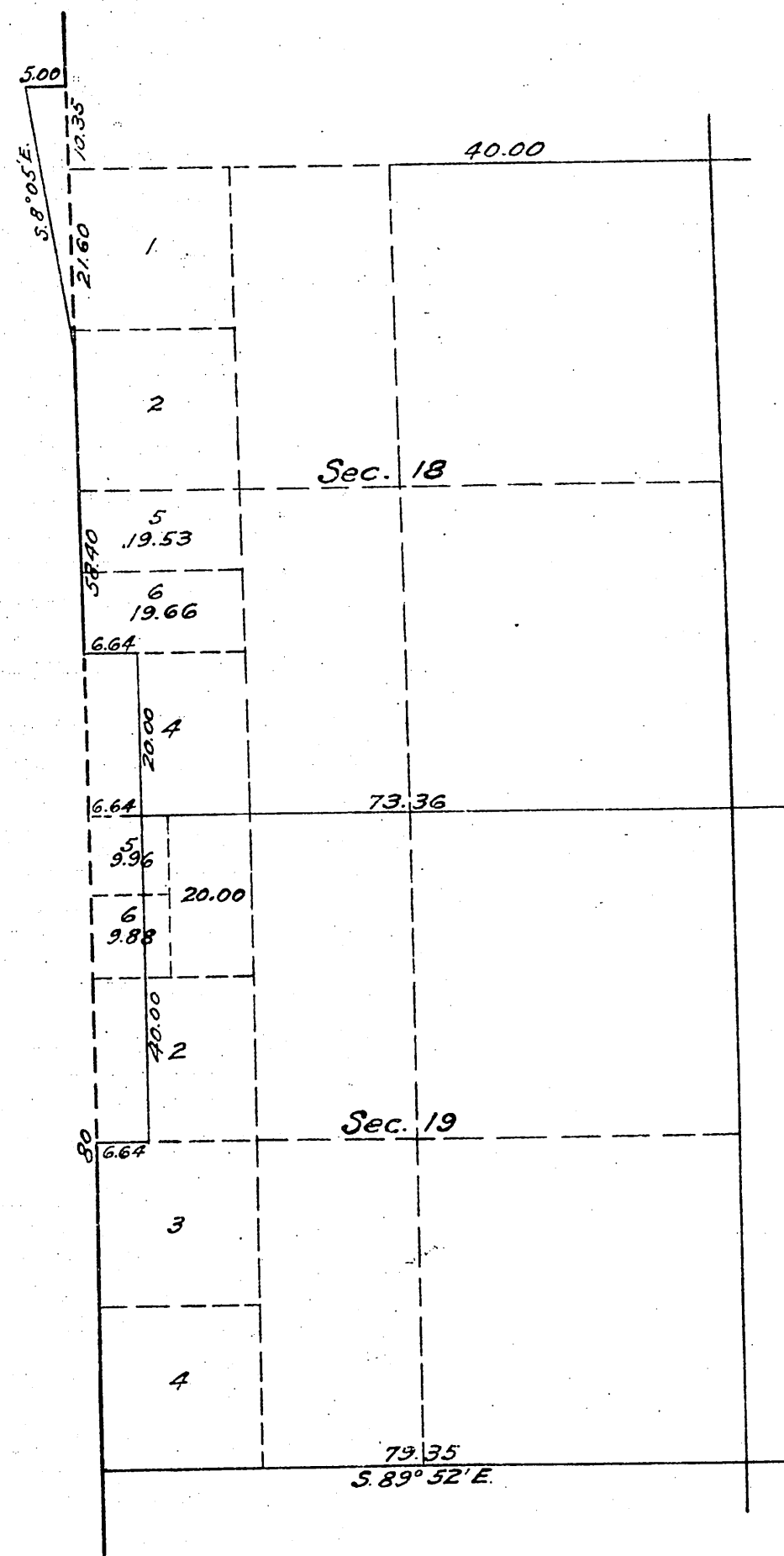
T. 6 N.,  
R. 17 W.

(1)

(4-675 2)

Accepted G.L.O. April 23, 1921

Supplemental Plat of Sections 18 and 19,  
Township N° 6 North, Range N° 17 West, San Bernardino Meridian, California.



This supplemental plat is authorized by the Commissioner of the General Land Office by letter Los Angeles 027789-027803 "E" WJL dated March 18, 1921.

This supplemental plat, showing the subdivision of lot 3, section 18 and lot 1, section 19, T. 6 N., R. 17 W., San Bernardino Meridian, California, plat approved September 16, 1880, is made for the purpose of obtaining the area and legal description of the subdivisions thereof to accommodate homestead entry Los Angeles 027789-027803 of John H. Allen, which embraces portions of above lots, and is hereby approved.

U.S. Surveyor General's Office

San Francisco, California.

March 28, 1921.

*John H. Moore*

U.S. Surveyor General for California.

Filed in U.S. Land Office  
Los Angeles, Cal.  
MAY 7, 1921.

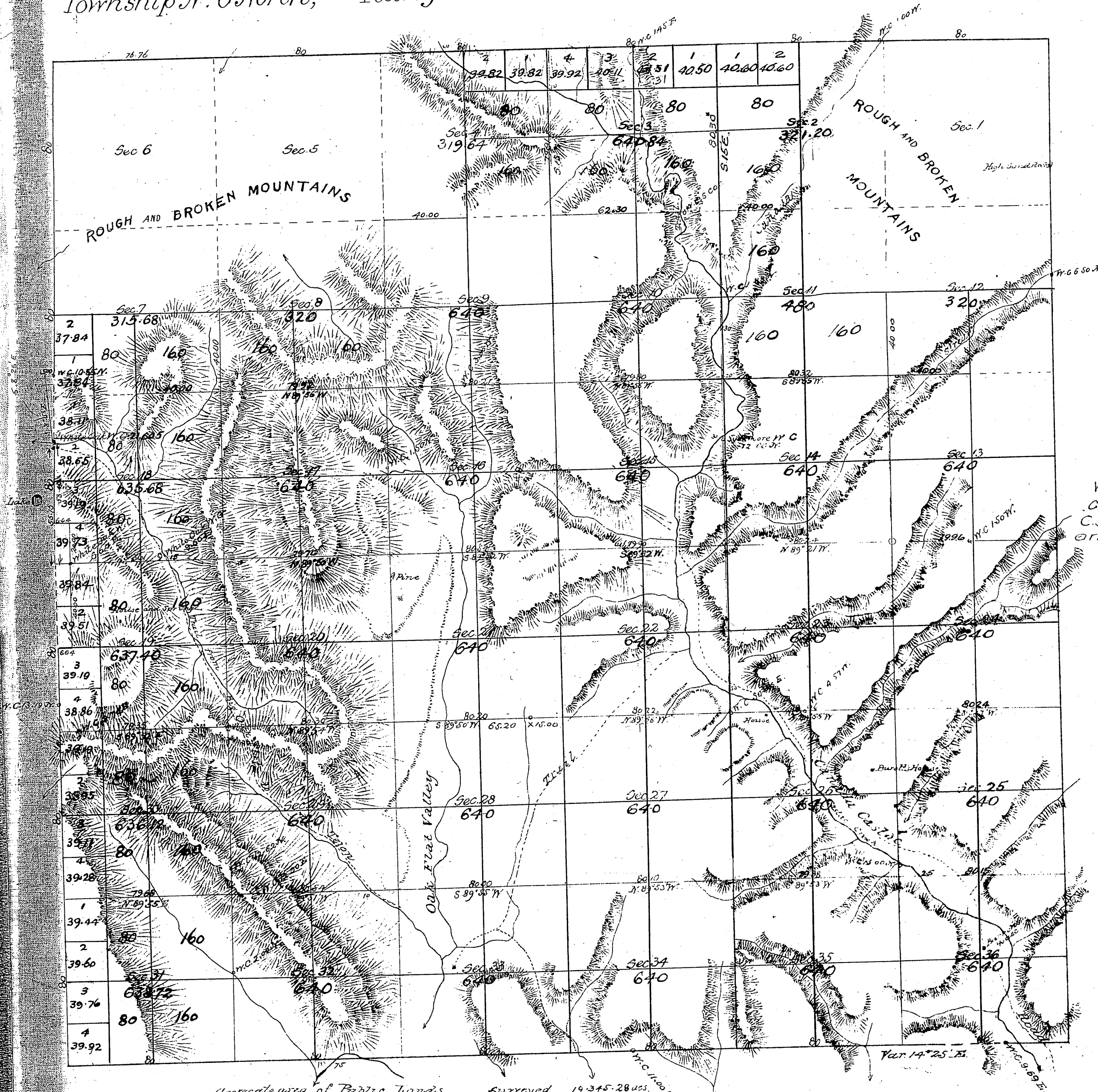
*B. J. Groves*  
Register.

Scale 20 chains to an inch.

TRUE MERIDIAN

Copied by - R.E.F. 7-31-23  
Checked by - H.G. 6-10-24

Township N°6 North, Range N°17 West. San Bernardino Meridian.



Gov. Field notes Sec 1, 2, 3, 4, 5, 6, 35, 36  
See C.S. No 9027  
West Bdy. See C.S. 9192  
C.S. 9222 For portions of inter Sec. lines  
C.S. 9302  
and S & E. bdy's  
1st Standard Parallel North - C.S. 9402

Gov. Field Notes lines between  
Sections

- 2+3
- 2+11
- 3+10
- 9+10
- 10+11
- 10+15
- 11+14
- 11+12
- 13+14
- 14+15
- 14+23
- 15+16
- 15+22
- 21+22
- 22+27
- 23+24
- 25+26
- 25+36
- 27+28
- 26+27
- 35+36 See C.S. No 9021

Aggregate area of Public Lands surveyed 19,345.28 acs.  
Estimated " " Mountain " unsurveyed 3,650.00 "  
aggregate 22,995.28 "

Surveys Designated	By whom Surveyed	Date of Contract	Amount of Surveys	When Surveyed
South Boundary of Township	G. S. Collins	October 21 <sup>st</sup> 1879	17 mls. 76 chs. 76 lvs	1879
Rest of Township Lines	W. H. Norway	October 10 <sup>th</sup> 1879	50 " 56 " 68 "	1880
Section Lines	"	"	"	May 5 <sup>th</sup> 1880

Rec'd & Filed Dec 24<sup>th</sup> 1880