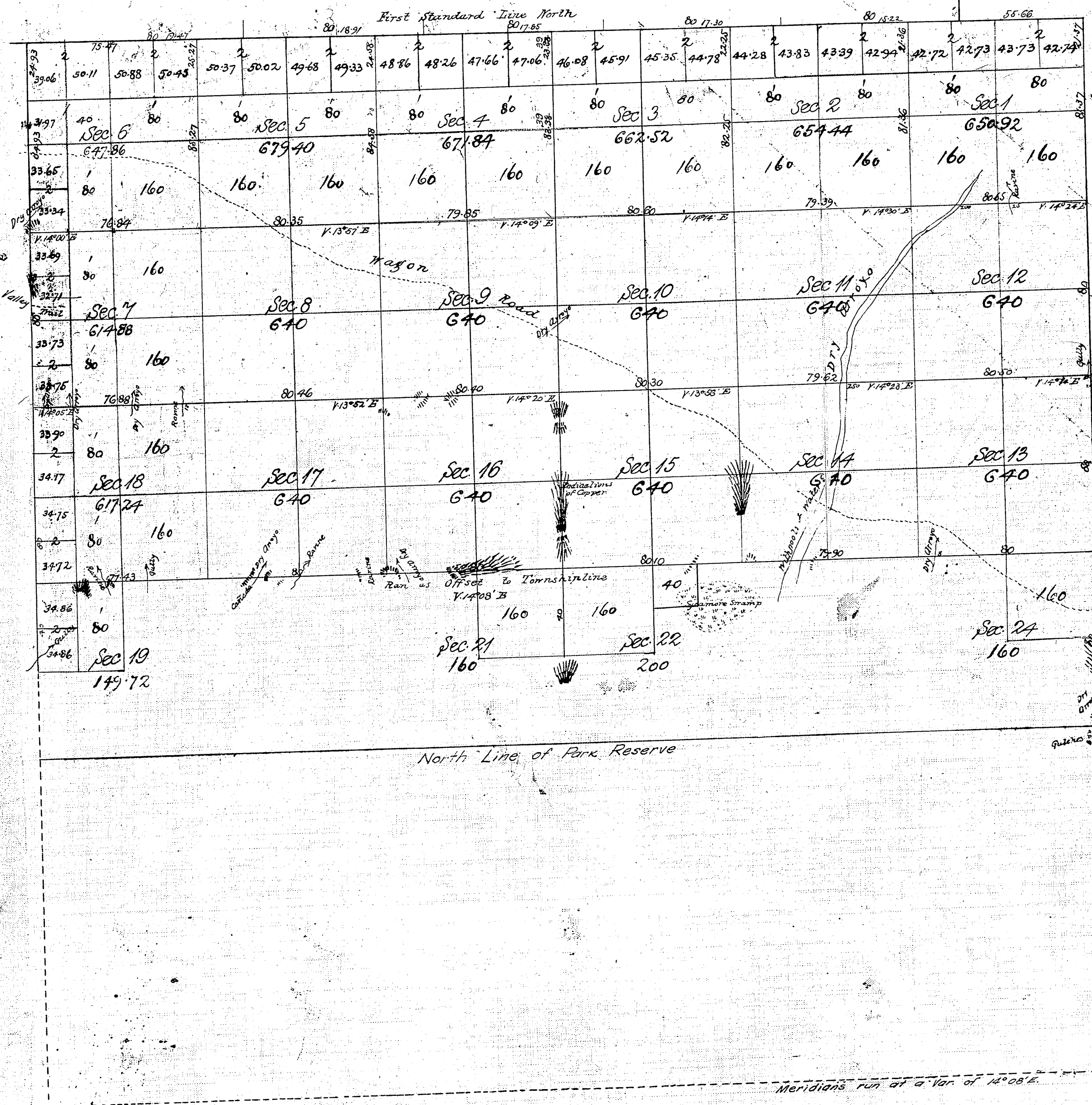


Township No 5 North, Range 10 West of the San Bernardino Meridian.

T.5 N.
R.10 W.
①



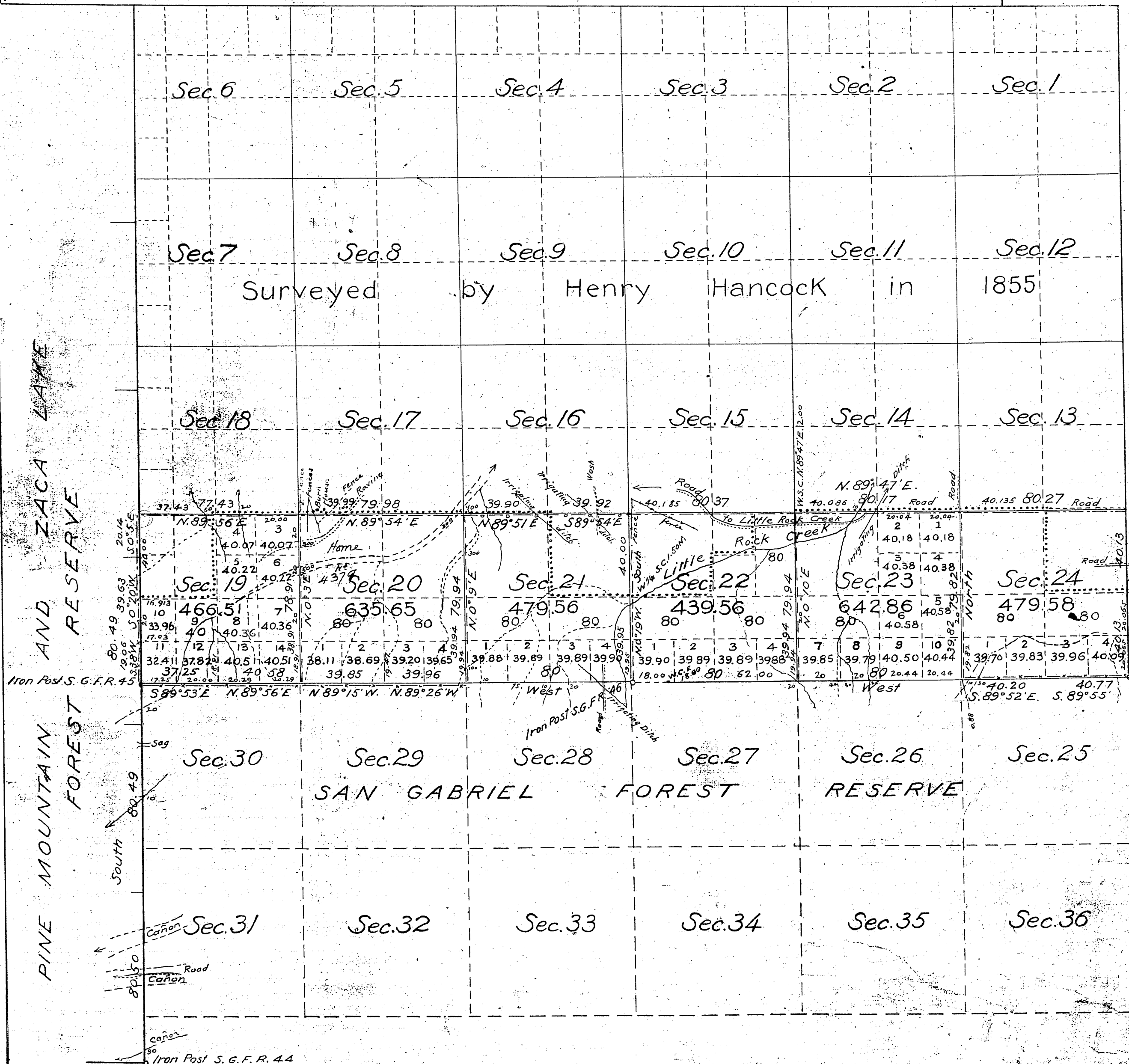
Gov. Field notes Sections 4, 5, 6, 8, 9, 10, 13, 14, 15, 24 See C.S. 59026
Gov. Field notes East half north 1/4 north half of east boundary of Township See C.S. No. 903

Surveys Designated	By whom Surveyed	Date of Contract	Amount of Surveys Miles chains links	When Surveyed
North boundary of Township	Ralph W. Norris	October 12 th 1853	5 71 66	1853
East of Township lines	Henry Hancock	February 15 th 1855	6 54 80	1855
Section lines as offset	" "	" "	5 77 49	"
Rest of Section lines	" "	" "	27 52 69	"

Aggregate Area of Public Lands surveyed 12, 228.82 Acres
Estimated Area of Mountain Lands unsurveyed 10, 828.60 "
Aggregate 23, 057.42 "

Signed: John C. Hays
Surv. Gen. L. Cal.

Township N^o 5 North, Range N^o 11 West, San Bernardino Meridian California



Area of Public Land previously surveyed 12,268.82 Acres
" " " " surveyed by Friel 3,143.72
Total Area of Public Land Surveyed 15,412.54 Acres
Estimated Area of Un-surveyed Land 7,648.00
Aggregate 23,060.54

NOTE: All of the unsurveyed portion of this Township lies within the boundaries of the San Gabriel Forest Reserve.
NOTE: Lot numbers in the S 1/2 of S 1/2 of Section 23 have been corrected on this plat. For authority see copy of letter from General Land Office, Washington, D.C., in D: 91-92 - Co. Sur. Mar. 30, 1933.

Filed in U.S. Land Office
Los Angeles, Cal. June 25, 1904
W.S. Graham
Register

The line of demarcation between the areas previously counted in total acreage surveyed and the new surveys is designated thus:-----
C.S. 9212 N&E line of Secs. 20, 21, 22, 23 & 24
C.S. 9213 East line of Secs. 1, 12, 13 & 24 & S. 1/2 of line of 13, 14 & 15
Port of Interior Sec. lines C.S. 9339
San Gabriel Forest Reserve Bdy. by Cutting - C.S. 9400

Latitude 34° 31' North
Longitude 118° 00' West } near cor. of Secs. 13, 14, 23 and 24
Magnetic Declination 15° 00' East

Surveys Designated	By whom Surveyed	Contract		Amount of Surveys			When Surveyed
		No	Date	Mls	Chs	Lks	
Lines previously surveyed, exhibited on Map approved March 19, 1856 and December 11, 1893.							
B'dies. of San Gabriel Forest Reserve	H. L. Cutting	126	Feb. 24, 1896				1896
Part of W. Bdy. of Tp. Re-traced	Legend Friel	189	May 23, 1902		38	83	1903
Part of W. Bdy. of Tp. Re-surveyed	"	"	"		40	00	"
Part of E. Bdy. of Tp. Re-traced	"	"	"	1	00	26	"
Section Lines, Re-surveyed	"	"	"	3	38	22	"
Section Lines, Re-traced	"	"	"	2	78	61	"
Section Lines, Re-traced	"	"	"	Not	charged		"
Section Lines, New	"	"	"	4	38	56	May 18, 1903
Connecting Lines	"	"	"		83		"

The above Map of Township N^o 5 North, Range N^o 11 West, San Bernardino Meridian, California, is strictly conformable to the field notes of the surveys thereof, on file in this Office which have been examined and approved.

U.S. Surveyor-General's Office
San Francisco, California
December 5, 1903

W.S. Graham
U.S. Surveyor-General for Calif.

TOWNSHIP N° 5 NORTH, RANGE N° 11 WEST, SAN BERNARDINO MERIDIAN, CALIFORNIA

3

RECEIVED

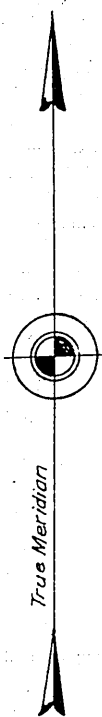
OCT 27 1928

U. S. Land Office,
LOS ANGELES, CAL.

Secs 26 to 35 Incl in
Angela National Forest.

Sec. 25 and 36 - C.S. 9380
Sec. 25 to 36 - C.S. 9388

Surveyed by
Henry Hancock and
Le grand Friel in 1903



Latitude 34°30'N. } Near 1/4 Sec. Cor.
Longitude 117°58'4"W. } bet. Secs 25 and 30
on E. bdy. of Tp.

Scale: 40 Chains to an Inch

Area Surveyed, 7607.68 Acres

LINES DESIGNATED	BY WHOM SURVEYED	No	GROUP DATE	MILEAGE		WHEN SURVEYED	
				MLS.	CHS.	BEGUN	COMPLETED
Exterior	John L. Warboys, U.S. Surveyor	160	June 25, 1926	8	39.38	Nov. 17, 1926	Dec. 15, 1926
Subdivisional		"	"	21	78.39	Nov. 16, 1926	Dec. 16, 1926
Meander		"	"	1	15.54	Nov. 19, 1926	Dec. 14, 1926
Miscellaneous							

Office of U.S. Supervisor of Surveys
Denver, Colorado, April 2, 1928
The above plat of Township No. 5 North, Range No. 11 West,
of the San Bernardino Meridian, California,
is strictly conformable to the field notes of the survey
thereof which have been examined and approved

James H. Simon
U.S. Supervisor of Surveys

DEPARTMENT OF THE INTERIOR
GENERAL LAND OFFICE

Washington, D.C., April 18, 1928.
The survey represented by this plat
having been correctly executed in accordance
with the requirements of law and the regulations
of this office, is hereby accepted.

Thos. C. Howell
Assistant Commissioner

Traced by Gus N. 4-25-30
Checked by R.S.B. 4-25-30