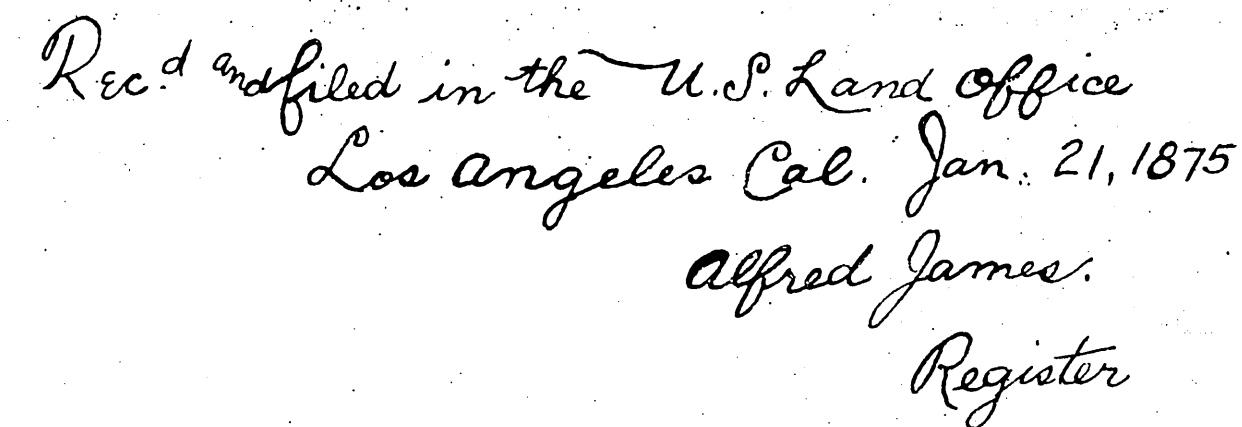
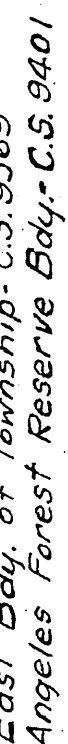


San Bernardino Meridian

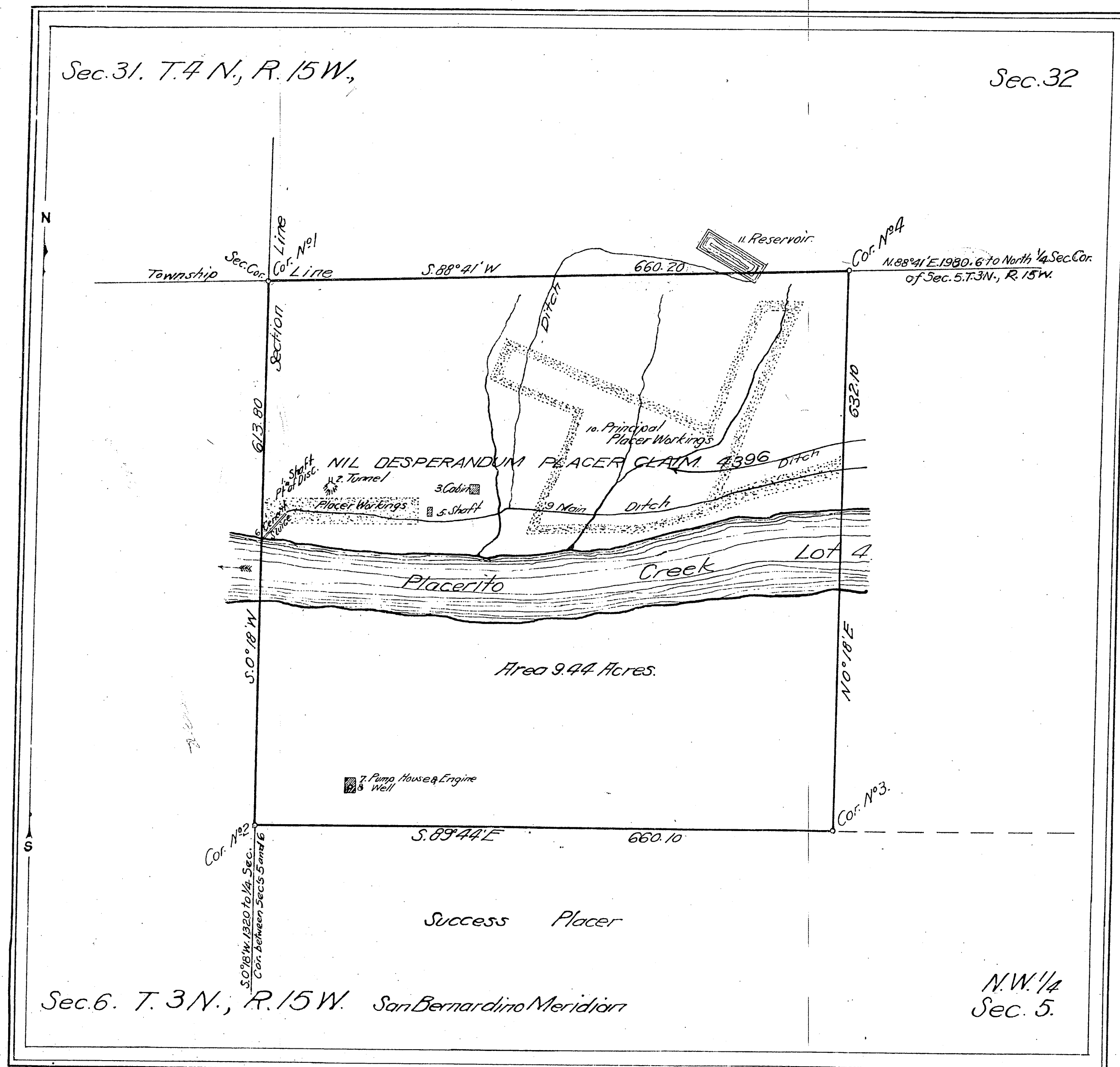


Field Notes Sec. 7, 8, 14, 15, 17, 18, 22, 23 + 24 - G.S. 9019

Copied by R.F.F. 7-5-23
Checked by H.G. 6-10-24



Signed:-
Thee. Wagner
U.S. Surveyor General Cal.



Claim Located January 1, 1892

Mineral Survey No 4396

Application for survey dated August 22, 1904

Lot No.
Los Angeles Land District.**PLAT**

OF THE CLAIM OF

ELIZA J. STEWART

KNOWN AS THE

NIL DESPERANDUM PLACER CLAIM

IN San Fernando Petroleum MINING DISTRICT,
Los Angeles County, California
Containing an Area of 9.44 Acres.

Scale of 100 Feet to the inch.

Variation 14° 12' East.

SURVEYED December 1904 BY
John J. Goldsworthy
U.S. Deputy Mineral Surveyor,The Original Field Notes of the Survey of the Mining Claim of
Eliza J. Stewart
known as the

Nil Desperandum Placer Claim

From which this plat has been made under my direction have been examined and approved, and are on file in this Office and I hereby certify that they furnish such an accurate description of said Mining Claim as will, if incorporated into a patent, serve fully to identify the premises, and that such reference is made therein to natural objects or permanent monuments as will perpetuate and fix the locus thereof.

I further certify that Five Hundred Dollars worth of labor has been expended or improvements made upon said Mining Claim by claimant or her grantors and that said improvements consist of 1. Ditch, Shaft, and 2. Tunnel, 25 3. Cabin, 25 4. Placer Workings, 150, 5. Shaft, 40, 6. Cement Slabs, 150, 7. Pump House, and Engine, 100, 8. Well, 300, 9. Main Ditch, 320, 10. Placer Workings, 400, 11. Reservoir, 25. That the location of said improvements is correctly shown upon this plat, and that no portion of said labor or improvements has been included in the estimate of expenditures upon any other claim.

And I further certify that this is a correct plat of said Mining Claim made in conformity with said original field notes of the survey thereof, and the same is hereby approved.

U.S. Surveyor General's Office } *W. S. Graham*
San Francisco, Calif. } U.S. Surveyor General for
November 18, 1905 } California

Received and filed in U. S. Land Office
Los Angeles Cal. Nov. 20, 1905.
(7th July 28, 1904)

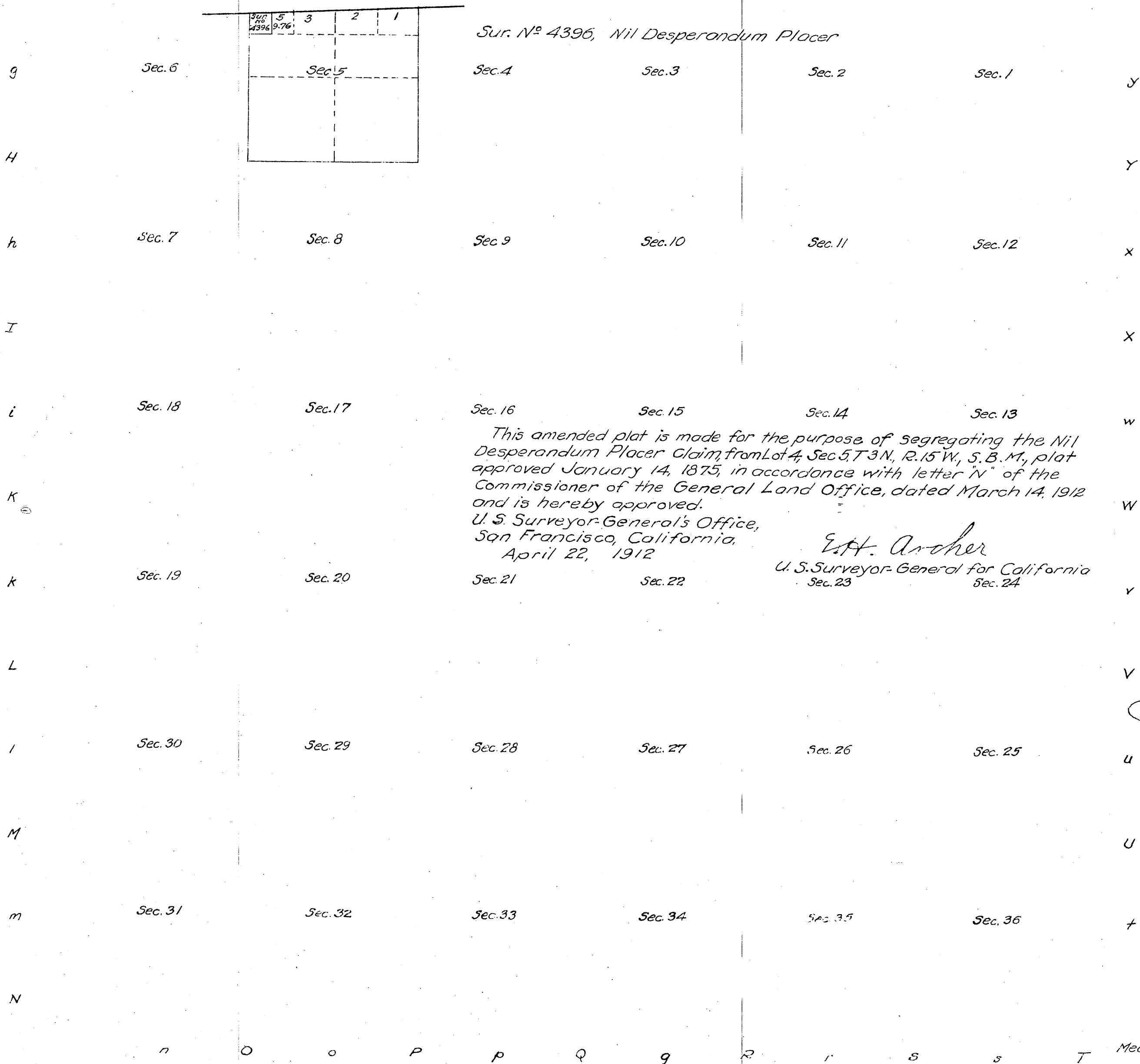
TRACED BY, HG. 6-27-24
CHECKED BY, RJA. 9-4-24

W. S. Graham
Register

Township N^o 3 North
Amended Plat of Section 5
Range N^o 15 West San Bernardino Meridian California.

G f F e E d D c C b B a A

Received
Jun 3 1912
U.S. Land Office
Los Angeles Cal.



Filed in U.S. Land Office.
Los Angeles Cal.
June 3rd 1912
Register.

Areas in Acres.	
Public Land	
Indian Reservation	
Indian Allotments	
Mineral Claims	
Water Surface	
Total Area	

Surveys Designated	By Whom Surveyed	Contract		Amount of Surveys		When Surveyed	
		No.	Date	Mls. chs.	lks.	Begun	Completed

The above map of Township N^o Range N^o of the Meridian is strictly conformable to the field notes of the survey there of on file in this office which have been examined and approved.

U.S. Surveyor General's Office.

Surveyor General.

⑥

Scale 20 chains = 1 inch

This supplemental plat, showing the subdivision of lot 5, Section 6, T.3 N., R.15 W., San Bernardino Meridian, California, is made for the purpose of obtaining the area and legal description of the subdivisions thereof, to accommodate the entry, Los Angeles 015 721 of Walter Park part of which embraces the N.W. 1/4 of lot 5 of said section, in accordance with letter 'E' of the Commissioner of the General Land Office, dated May 14, 1914, and is hereby approved.

U.S. Surveyor-General's Office,
San Francisco, California.
May 25, 1914

Frank H. Reed
U.S. Surveyor-General for California.

John Roche
Register.

Areas in Acres.	
Public Land	
Indian Reservation	
Indian Allotments	
Mineral Claims	
Water Surface	
Total Area.	

Frank H. Reed
U.S. Surveyor-General for California.

Scale 40 Chains to an inch.
Mean Magnetic Declination

[illegible]

The above map of Township N^o Range N^o of the
Meridian is strictly conformable to the field notes of the survey thereof
on file in this office have been examined and approved.
U.S. Surveyor General's Office.

Surveyor General.