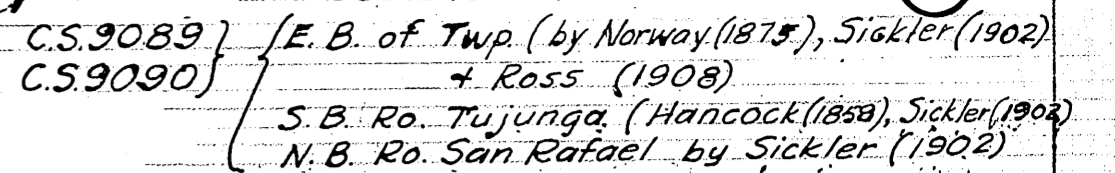


Gov. Field Notes



C.S. 9092 - S. Side Secs. 35 + 36. (Norway 1875)
(Ranch + Sec. lines in Secs. 20 to 27 (Sickler 1902,

C.S. 9141-sec. 5

R 27^(old) C.S.9225 - Bdy. line of Lot 38 and part
of Lot No 37 Ro. Tujunga & Ro. San Fernando

Field notes north+west Twp lines
Sections 4-5-6 C.S. 7848

Por. of Interior Sec. lines C.S. 9188

Rancho lines C.S. 9186

Part of N&E Bay C.S. 9/85
Notes on Angeles National Forest boundary
1-650282

Public Land previously surveyed	2,349.07 Acres
" surveyed by Sickler	5,779.31 "
Aggregate Area of Public Land	8,128.38 Acres
Estimated " Private Grants	14,826.62 "
Aggregate	22,955.00 "

Filed in U. S. Land office
Angeles, Cal. July 18-1904.

A. J. Crossland
Register

NOTE: Sections 1, 2, 3 and 4, are within the boundary lines of the San Gabriel Forest Reserve.

The line of demarcation between the areas previously counted in total acreage surveyed and the new surveys, is indicated thus.....

Latitude $34^{\circ} 15'$ North } near center Sec 24 on E. Bdy of Twp.
Longitude $118^{\circ} 18'$ West }
Mean Mag. declination $15^{\circ} 20'$ East

The above Map of Township No 2 North, Range No 14 West, San Bernardino Meridian, California, is strictly conformable to the field notes of the surveys thereof, on file in this office, which have been examined and approved by U. S. Surveyor-General's Office.

San Francisco, California

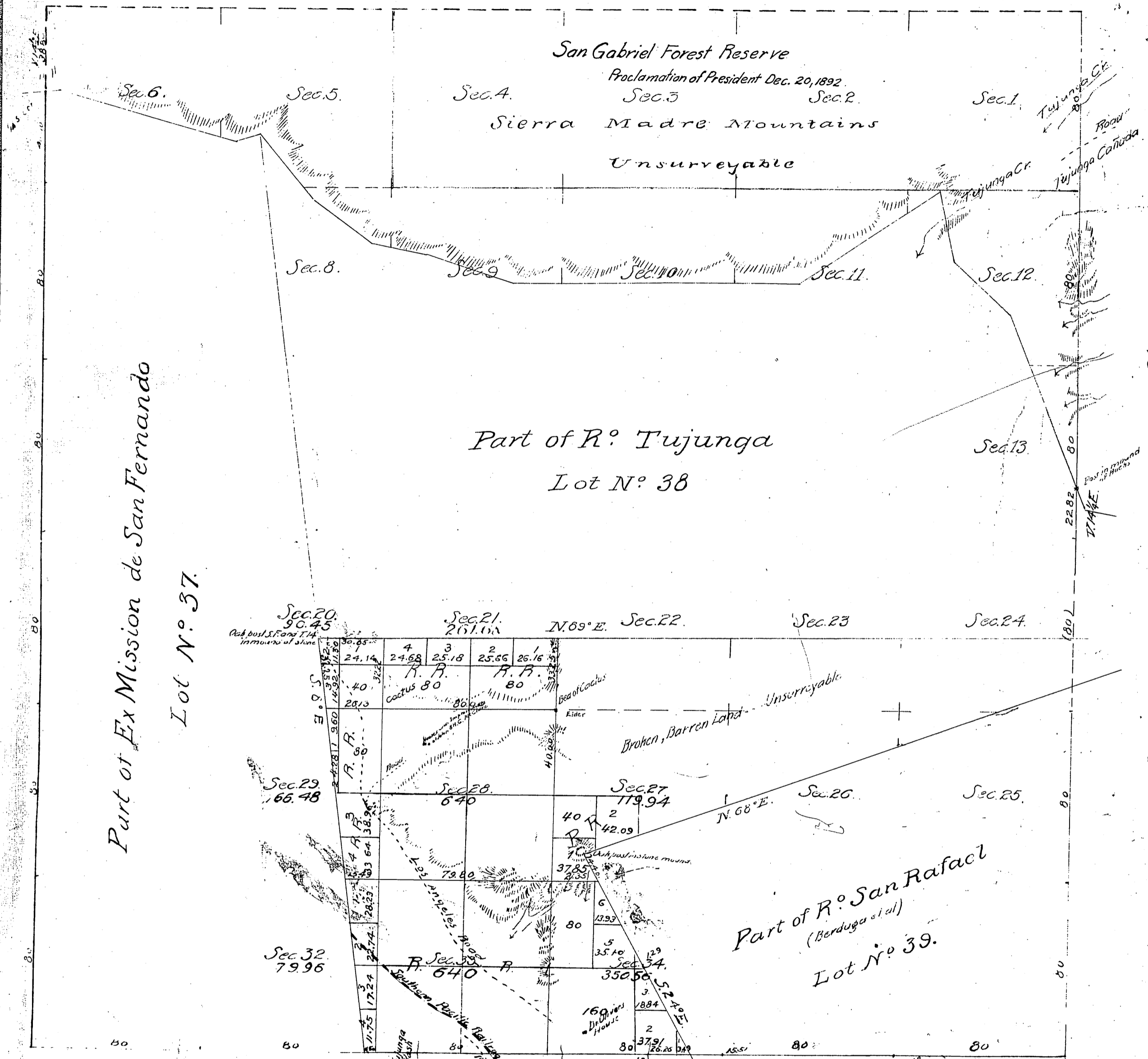
May. 6th 1902

W. S. Graham
U.S. Surveyor-General for California

Township N° 2 North

Range N° 14 West

San Bernardino Meridian.



Field Notes For 50 Line Sec. 34
See N127 Page 82.
Field notes north of West Top lines See C.S. 7848

Surveys Designated	By whom Surveyed	Date of Contract	Amount of Surveys	When Surveyed
Township lines colored brown.	Henry Hancock	Dec. 30 th - 1873		1854
Boundaries of Lot 38	"	(init) Sept. 1 st 1858		1858
" " " 37	Compiled in San Genl Office			May 26 - 1869
" " " 39	G. H. Thompson	(init) Nov. 23 - 1869		1869
Township line colored blue	M. G. Wheeler	Sept. 4 - 1874		1874
" lines " red	W. H. Norway	July 31 - 1875		1875
" " " green	John Goldsworthy	Aug. 16 - 1875		1876
Ranch " " blue	"	"	1 ml. 30 chs. 78 lrs. 0 ml. 76 chs. 90 lrs.	1876
Section lines	"	"	7" 8" 19"	Feb. 29 - 1876

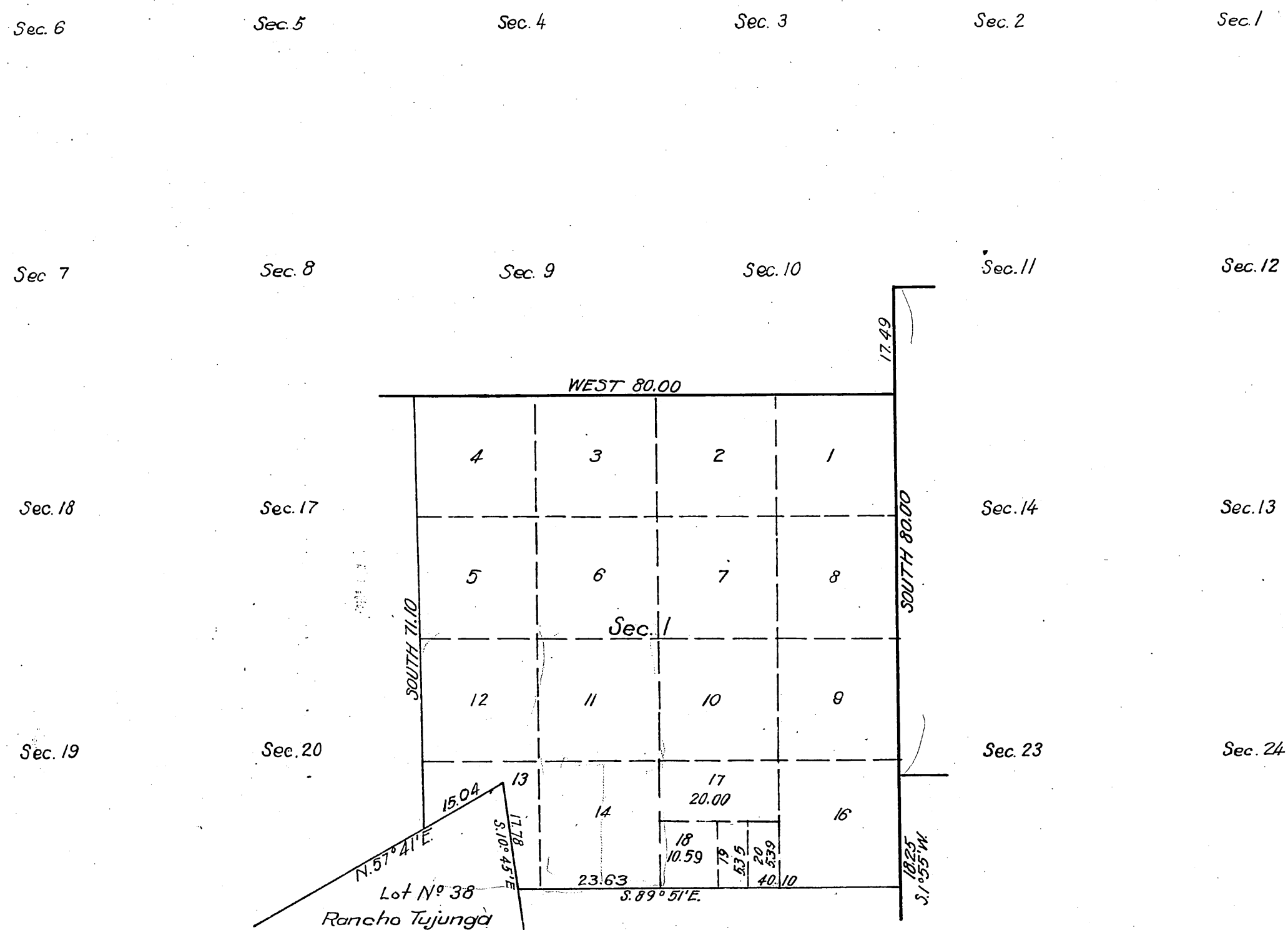
For Sec. 5 See C.S. 9141

C.S. 9092 For R. Lines & S. lines of Sec. 35 & 36

RECEIVED
U.S. LAND OFFICE
LOS ANGELES Cal.
Date Jun. 25, 1920
Hour 9:00
am

Scale 20 chains to an inch

*This supplemental plat is authorized by the
Commissioner of the General Land Office
by letter dated May 3, 1920*



June 25, 1970

B. H. Groves
Register.

This supplemental Plat showing the subdivision of Lot 15, Section 1, T. 2 N., R. 14 W., San Bernardino Meridian, California, plat approved May 6, 1903, is made for the purpose of obtaining the area and legal description of the subdivision thereof to accommodate homestead entry Los Angeles 025689 of John C. Murphy, which embraces the E $\frac{1}{2}$ SE $\frac{1}{4}$ of above lot of said section, and is hereby approved.

U.S. Surveyor General's Office

San Francisco, California

May 21, 1920

John H. Moore?
U.S. Surveyor General for California.

Areas in Acres	
Public Land	
Indian Reservation	
Indian Allotments	
Mineral Claims	
Waters Surface	
Total Area	

Scale 40 chains to an inch

Magnetomagnetic Declination

[illegible]

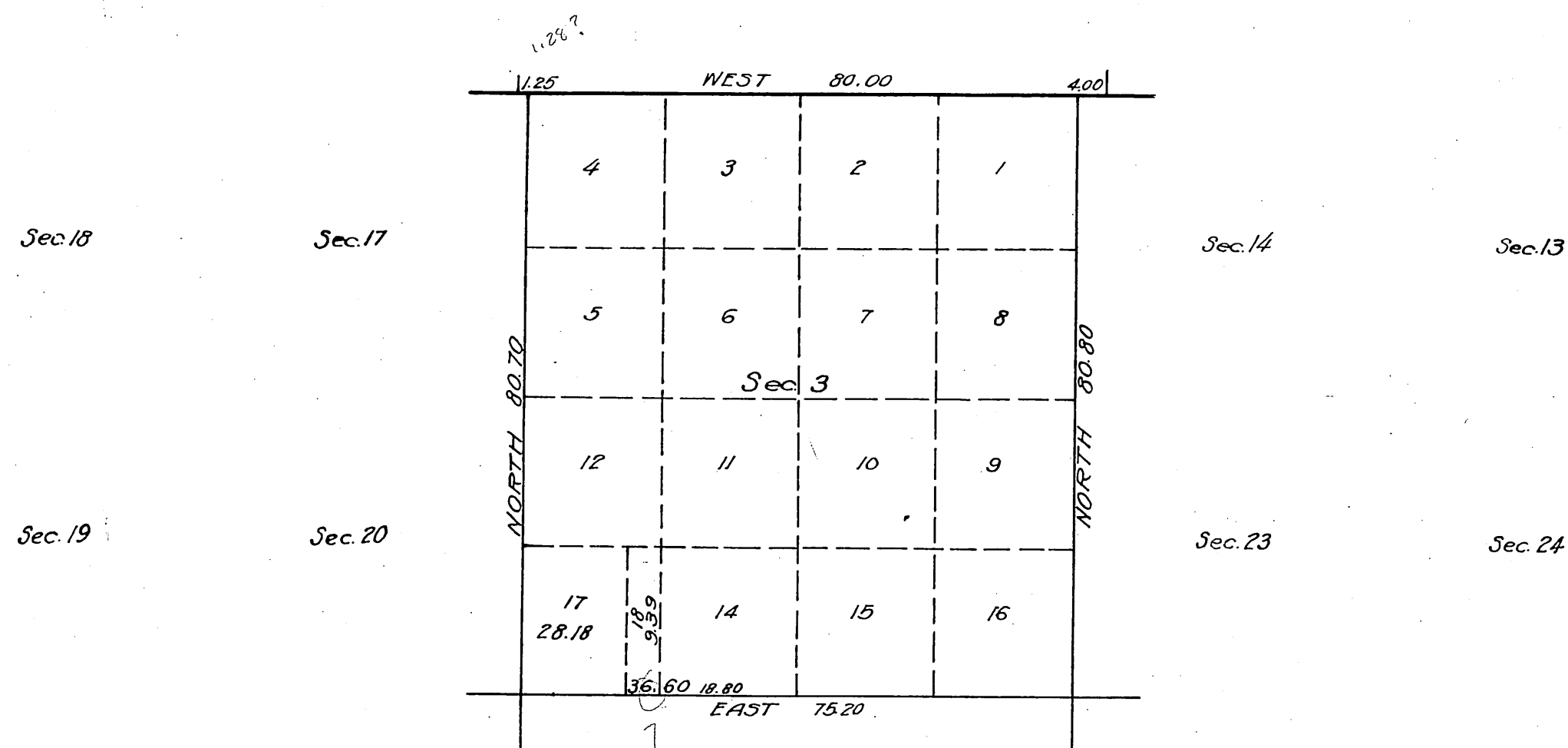
The above map of Township No. _____ Range No. _____ of the _____
Meridian _____ is strictly conformable to the field notes of the survey thereof on file
in this office, which have been examined and approved
U.S. Surveyor General's Office. }

Surveyor General.

RECEIVED
U.S. LAND OFFICE
LOS ANGELES, CALIF.
Date JUNE 25, 1920
Hour 9⁰⁰ A.M.

*This Supplemental Plat is authorized by the
Commissioner of the General Land Office by letter
Los Angeles 024301 "E" Jsd dated May 17, 1920.*

Sec. 7 *Sec. 8* *Sec. 9* *Sec. 10* *Sec. 11* *Sec. 12*



Sec. 30

This supplemental Plat, showing the subdivision of Lot 13, Section 3, T.2N. R.14W., San Bernardino Meridian, California, Plat approved May 6, 1903, is made for the purpose of obtaining the area and legal description of the subdivisions thereof to accommodate homestead entry Los Angeles 024301 of Mary Oliver, widow of Eugene T. Oliver, which embraces a portion of above Lot of said section, and is hereby approved.

U.S. Surveyor General's Office

San Francisco California

May 28, 1920

*Filed in U.S. Land Office,
Los Angeles, Cal.*

June 25 1920

B. H. Groves
Register

Areas in Acres	
Public Land	
Indian Reservation	
Indian Allotments	
Mineral Claims	
Water Surface	
Total Area	

A horizontal number line with tick marks at 0, 10, 20, and 40.

Scale 40 Chains to an inch
Mean Magnetic Declination

Sec.31 Sec.32

Living H. Hooser

U.S. Surveyor General for California

[illegible]

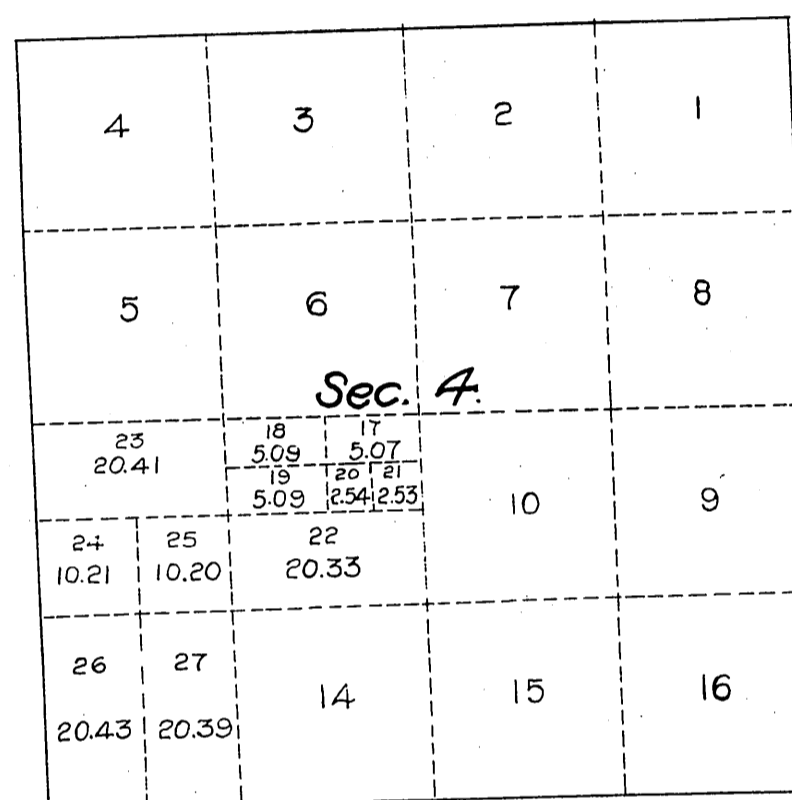
The above map of Township N^o _____ Range N^o _____ of the _____ Meridian _____ is strictly conformable to the field notes of the survey thereof on file in this office, which have been examined and approved.

U.S. Surveyor General's Office.

Surveyor General

SUPPLEMENTAL PLAT OF SECTION 4 TOWNSHIP N^o2 NORTH, RANGE N^o14 WEST, S.B.M. CALIFORNIA.

Accepted per Letter "E"
dated Jan 7-1911.



Note:—This supplemental diagram is made for the purpose of securing a legal designation for those parts of lots 11, 12 and 13 as shown on plat approved May 6, 1903, covered by H.E. 06857 of Bernard C. A. Molitz, dated July 19, 1909. The descriptions of the lottings of the above H.E. 06857, in said lots 11, 12 and 13, originally given as the E $\frac{1}{2}$ SW $\frac{1}{4}$ SW $\frac{1}{4}$, SE $\frac{1}{2}$ NW $\frac{1}{4}$ SW $\frac{1}{4}$, N $\frac{1}{2}$ NW $\frac{1}{4}$ SW $\frac{1}{4}$, S $\frac{1}{2}$ NW $\frac{1}{4}$ NE $\frac{1}{4}$ SW $\frac{1}{4}$, SW $\frac{1}{4}$ NE $\frac{1}{4}$ NE $\frac{1}{4}$ SW $\frac{1}{4}$, are now lots 27, 25, 23, 19 and 20 respectively.

Scale: 20 chains to the inch.

The above supplemental diagram of the subdivision of lots 11, 12 and 13, Section 4, Township N^o2 North, Range N^o14 West, San Bernardino Meridian, California, correctly shows the amendments thereof in accordance with instructions contained in Department letter "E" dated July 14, 1910.
U.S. Surveyor General's Office.
San Francisco, California.
December 21, 1910.

E. H. Archer
U.S. Surveyor General
for California.

Township N^o 2 North, Supplemental Plat of Section 4,
Range N^o 14 West, San Bernardino Meridian, California

T.2N.
R.14W.

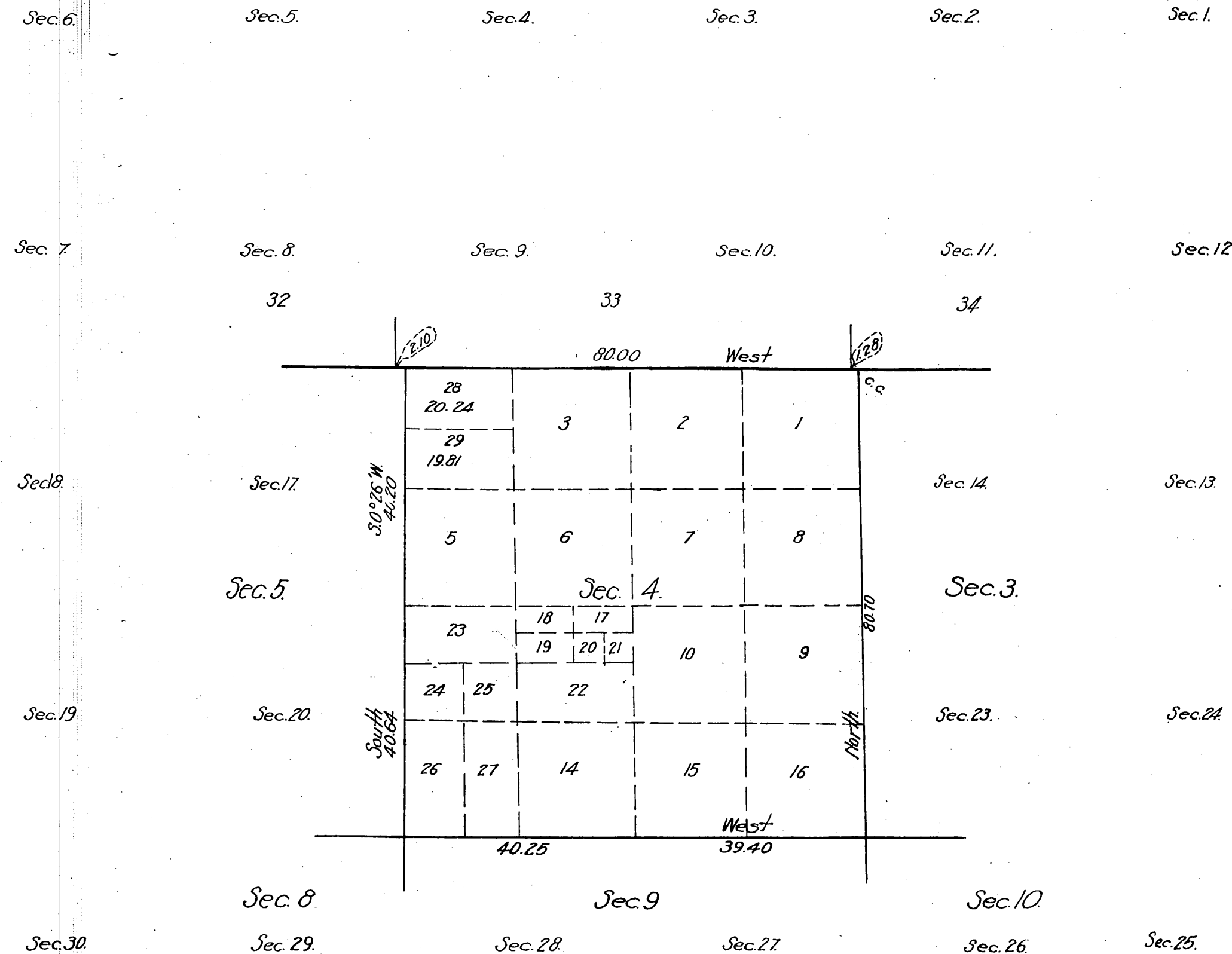
6

Survey accepted G.L.O.
January 19, 1919

RECEIVED
U.S. LAND OFFICE
LOS ANGELES, CAL.

Scale 20 chains = 1 inch

Date JAN 24, 1920
Hour 9:00
am



Los Angeles 023796"E" December 13, 1918.

This supplemental plat showing the subdivision of Lot 4, Section 4, T.2N., R.14W., San Bernardino Meridian, California, plats approved May 6, 1903, and December 21, 1910, is made for the purpose of obtaining the area and legal description of the subdivisions thereof, to accommodate homestead entry Los Angeles, 023796, of James H. Burbour, which embraces the N¹/₂ of the above Lot of said Section, and is hereby approved.

U.S. Surveyor General's Office,
San Francisco California,
December 23, 1918

Filed in U.S. Land Office,
Los Angeles, Cal.
JAN. 25, 1919

B. L. Jones
Register

Areas in Acres	
Public Land	
Indian Reservation	
Indian Allotments	
Mineral Claims	
Water Surface	
Total Area	

Louis H. Moore
U.S. Surveyor General
for California

Scale 40 chains to an inch
Mean Magnetic Declination

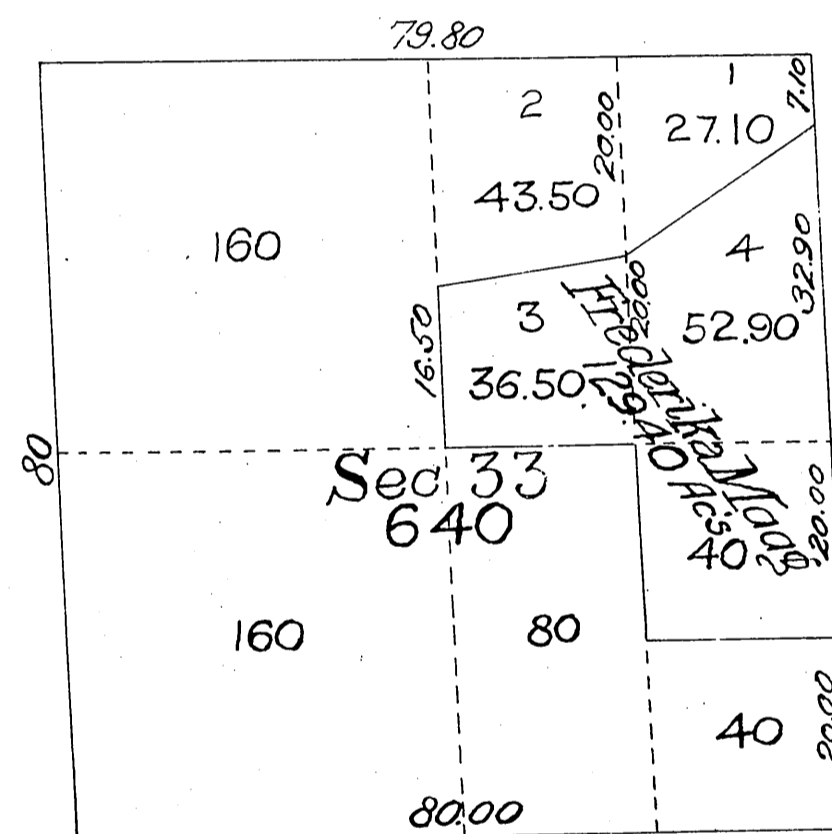
Surveys Designated	By Whom Surveyed	Group		Amount of Surveys			By Whom Surveyed	
		No.	Date	Mts.	Chs.	Acres	Began	Completed

The above map of Township N^o 2 North, Range N^o 14 West, of the San Bernardino Meridian is strictly conformable to the field notes of the survey thereof on file in this office, which have been examined and approved

U.S. Surveyor General's Office

Surveyor General

*Supplemental Plat of Section 33 in
Township N° 2 North, Range N° 14 West, S.B.M.
California.*



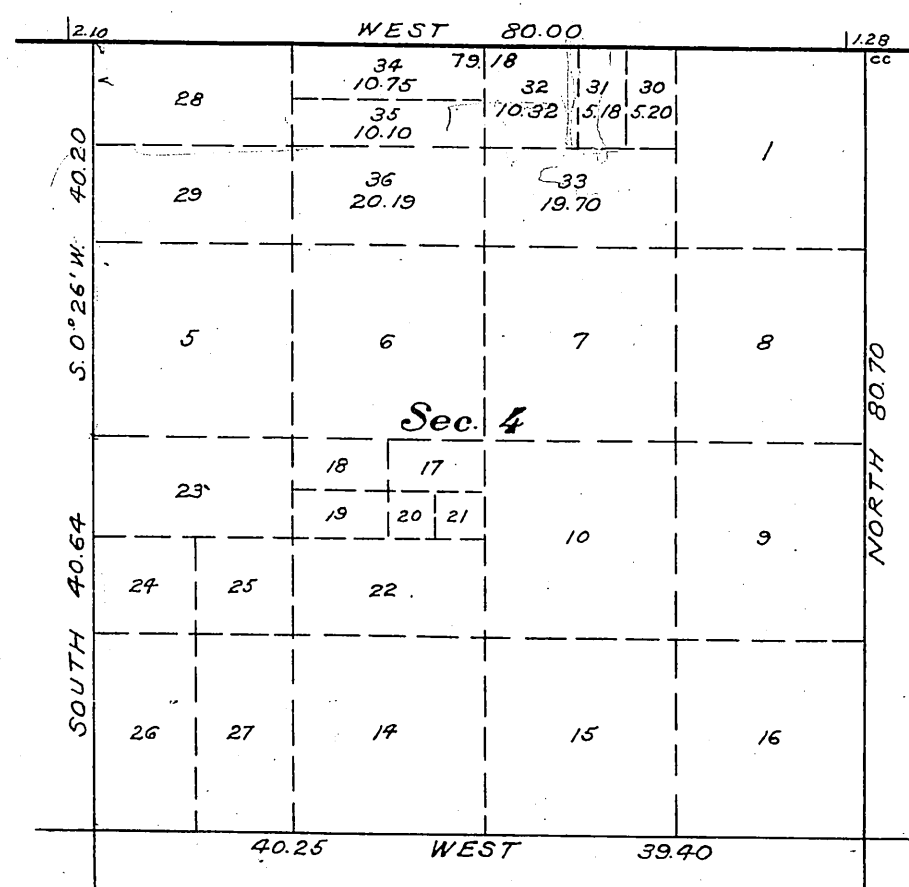
*Received and filed in U. S. Land Office
Los Angeles Cal.
Oct. 9. 1900
J. J. Connelley
Register*

*The above supplemental plat of Section 33 of Township N° 2 North Range N° 14 West San Bernardino Meridian Cal. correctly shows the areas as amended in conformity to the field notes of survey and to instructions from the General Land Office regarding irregular boundaries of fractional lots contained in letter "E" dated July 21st 1900
U.S. Surveyor General's Office
San Francisco, California
August 23rd 1900*

Scale 20 chs = 1 inch.

*J. M. Gleaves
U.S. Survey Gen'l, Cal.*

RECEIVED
LAND OFFICE
LOS ANGELES, CALIF.
Date JAN 13 1922
Hour 2 P.M.



U.S. Surveyor General for California.

[illegible]

HSP