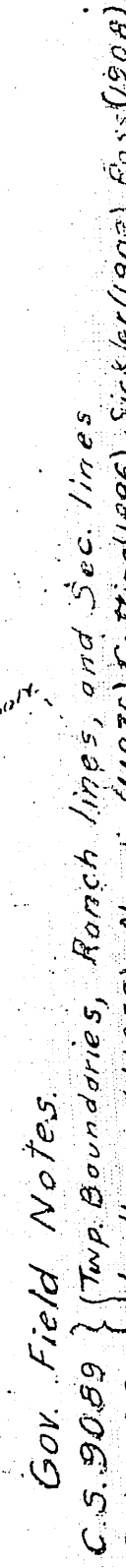


①

San Bernardino Meridian.

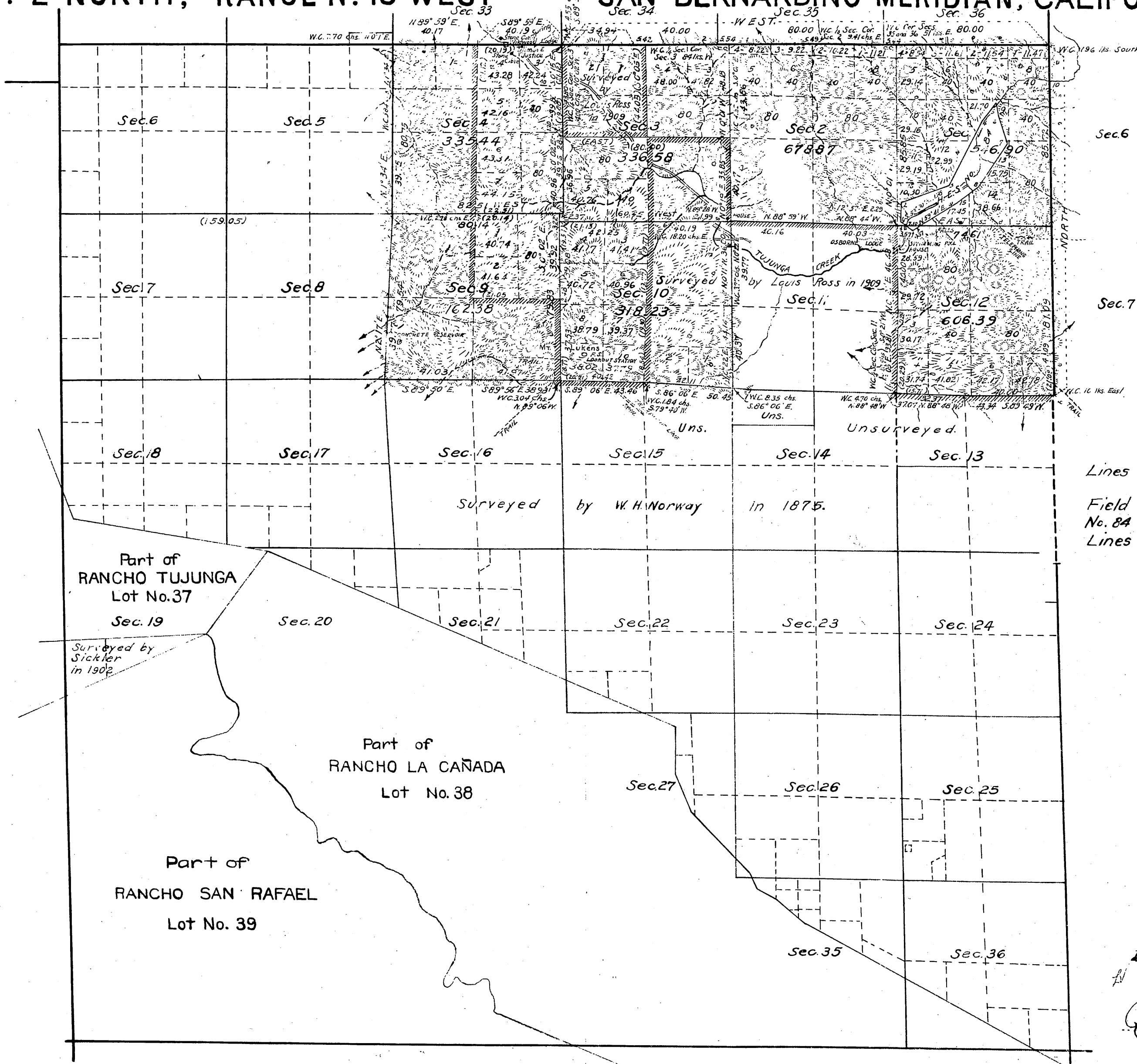


Gov. field notes - All sec. 22 → C.S. 9073
 " " " - W. B sections 647 etc.

TOWNSHIP N° 2 NORTH, RANGE N° 13 WEST

SAN BERNARDINO MERIDIAN, CALIFORNIA.

RECEIVED
U. S. LAND OFFICE
LOS ANGELES CALIF
Date DEC 18 1926
Hour 11:00 am



Lines in Sections 1 to 12
C.S. 9364
Field Notes on Homestead Entry
No. 84 in Sec. 1 and 12 - C.S. 9371.
Lines of Section 3 - C.S. 9383

Filed in U. S. Land Office,
Los Angeles Cal.
FEB 23 1927
Register.

Lat. 34° 16' N. Near the 1/2 Sec. cor. of Secs. 4 and 33
Long. 118° 14' 30" W.

Mean Magnetic Declination,

Scale: 40 Chains to an Inch.

Area Surveyed, 2984.79 Acres.

LINES DESIGNATED	BY WHOM SURVEYED	No	GROUP DATE	MILEAGE		WHEN SURVEYED	
				MLS.	CHS.	BEGUN	COMPLETED
Exterior	William E. Hiester	138	June 10, 1924	6	2.11	June 17, 1925	Aug. 22, 1925
Subdivisional	U.S. Surveyor.	"	"	15	20.18	" 12, "	" 25, "
Meander	"	"	"				
Miscellaneous	"	"	"		18.76	Aug. 22, "	" 22, "

Office of U.S. Supervisor of Surveys

Denver, Colorado, June 9, 1926

The above plat of Township No. 2 North Range No. 13 West of the San Bernardino Meridian, California, is strictly conformable to the field notes of the survey thereof which have been examined and approved.

W. H. Johnson
U.S. Supervisor of Surveys.

DEPARTMENT OF THE INTERIOR
GENERAL LAND OFFICE

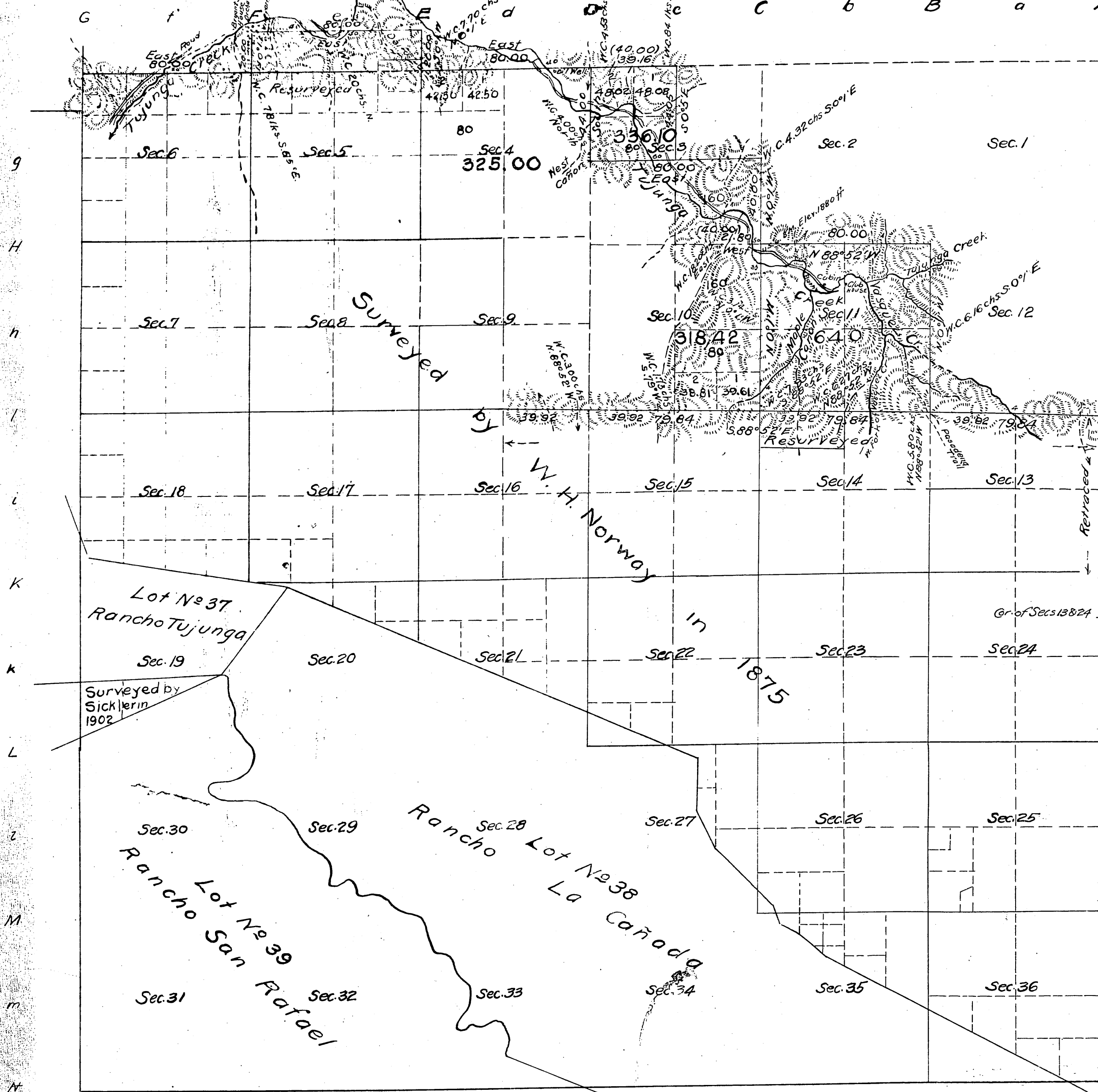
Washington, D.C., October 26th 1926.

The survey represented by this plat having been correctly executed in accordance with the requirements of law and the regulations of this office, is hereby accepted.

W. H. Carson
Acting Assistant Commissioner.

Traced by I.V.V. 4-18-27
Chkd. by H.G. 4-20-27

Township No 2 North, Range No 13 West, San Bernardino Meridian, California.



Field Notes

C.S. 9048 { N. side Secs. 10, 11, 13, 14, 15,
E. " " 10, 11
C.S. 9073 { N. side Secs. 10, 11, 13, 14, 15, 16, 17
W. " " 6, 7, 11, 12
All " " 22

Bdy. lines of Sec. 7 & 5/16 line of Sec. 8
C.S. 9089

Lines in Section 3 - C.S. 9383

Area

Public Land previously surveyed 11,062.78 Acres.
" surveyed by Ross 1,619.52 "
Estimated area Private Grants 7,087.54 "
" unsurveyed land 3,220.48 "
Aggregate 22,990.32 "

All public land North of Lots 37 and 38 is within the Angeles National Forest

Filed in U. S. Land Office,
Los Angeles, Cal.

MAY - 2, 1912

Register.

Areas in Acres.	
Public Land	
Indian Reservation	
Indian Allotments	
Mineral Claims	
Water Surface	
Total Area	

Scale 40 Chains to an inch

Mean Magnetic Declination

Lat. 34° 17' N } at Cor. of Secs 2, 3, 10 & 11
Long. 118° 15' W }

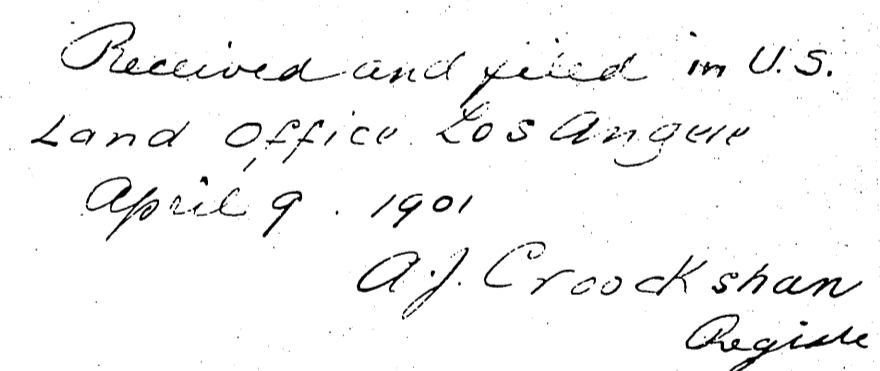
The above map of Township No. 2 North, Range No. 13 West of the San Bernardino Meridian, California, is strictly conformable to the field notes of the survey thereof on file in this office, which have been examined and approved.

U.S. Surveyor General's Office,
San Francisco, California,
August 11, 1911.

E. H. Archer
U. S. Surveyor General,
for California.

Surveys Designated.	By Whom Surveyed	Contract		Amount of Surveys			When Surveyed	
		No.	Date	Mls.	Chs.	1/4s.	Began	Completed
Lines previously surveyed, exhibited on plats approved Apr. 3, 1876; May 13, 1900; Oct. 1, 1900; July 14, 1902; May 21, 1903 & May 26, 1908.								
Body of Tp. resurveyed.	Louis Ross	276	Dec. 5, 1908	2	00	00	Sept. 16, 1909	Sept. 21, 1909
				1	39	16	" 21, "	" 24 "
Section Lines resurveyed.				3	39	44	Oct. 10 "	Nov. 1 "
				4	25	80	Nov. 4 "	" 15 "
Legal subdivision Lines				1	44	05	" "	" "

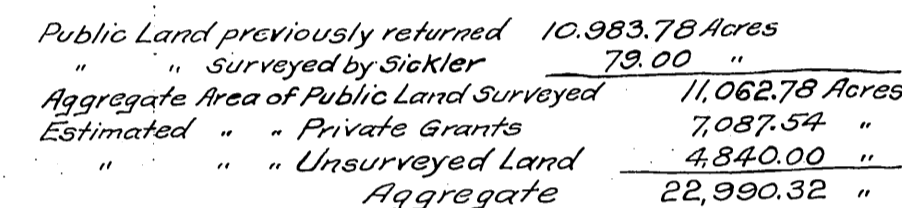
T 2 N
R 13 W
④



J. M. Gleaves
Surveyor General

Scale 10 chains = 1 inch

G *f* *F* *e* *E*



All of the Public Land in this Township, except that in Sec. 19, is within the San Gabriel National Forest. Procl. of Dec. 23, 1907.

Lat. $34^{\circ}15'N.$
Long. $115^{\circ}18'W.$
Magn. Decl. $15^{\circ}20'E$ } near center Sec. 24, T. 2 N. R. 14 W.

Surveys Designated	By Whom Surveyed	Date of Contract	Amount of Surveys M. Chs. Lks.	When Surveyed	
Lines previously surveyed exhibited on Map approved April 3, 1876.					
Part W. Bdy. resurveyd.	Wm A. Sickler	176, April 22 1901		1902	
Ranch Bdies "	"	"		"	
	"				

The above Map of Township No. 2 North of Range No. 13 West, San Bernardino Meridian, California, is strictly conformable to the field notes of the survey there of on file in this Office, which have been examined and approved.

U. S. Surveyor General's Office,
San Francisco, California.
May 26, 1908.

W. S. Graham
U. S. Sur.^y Genl.
for California.

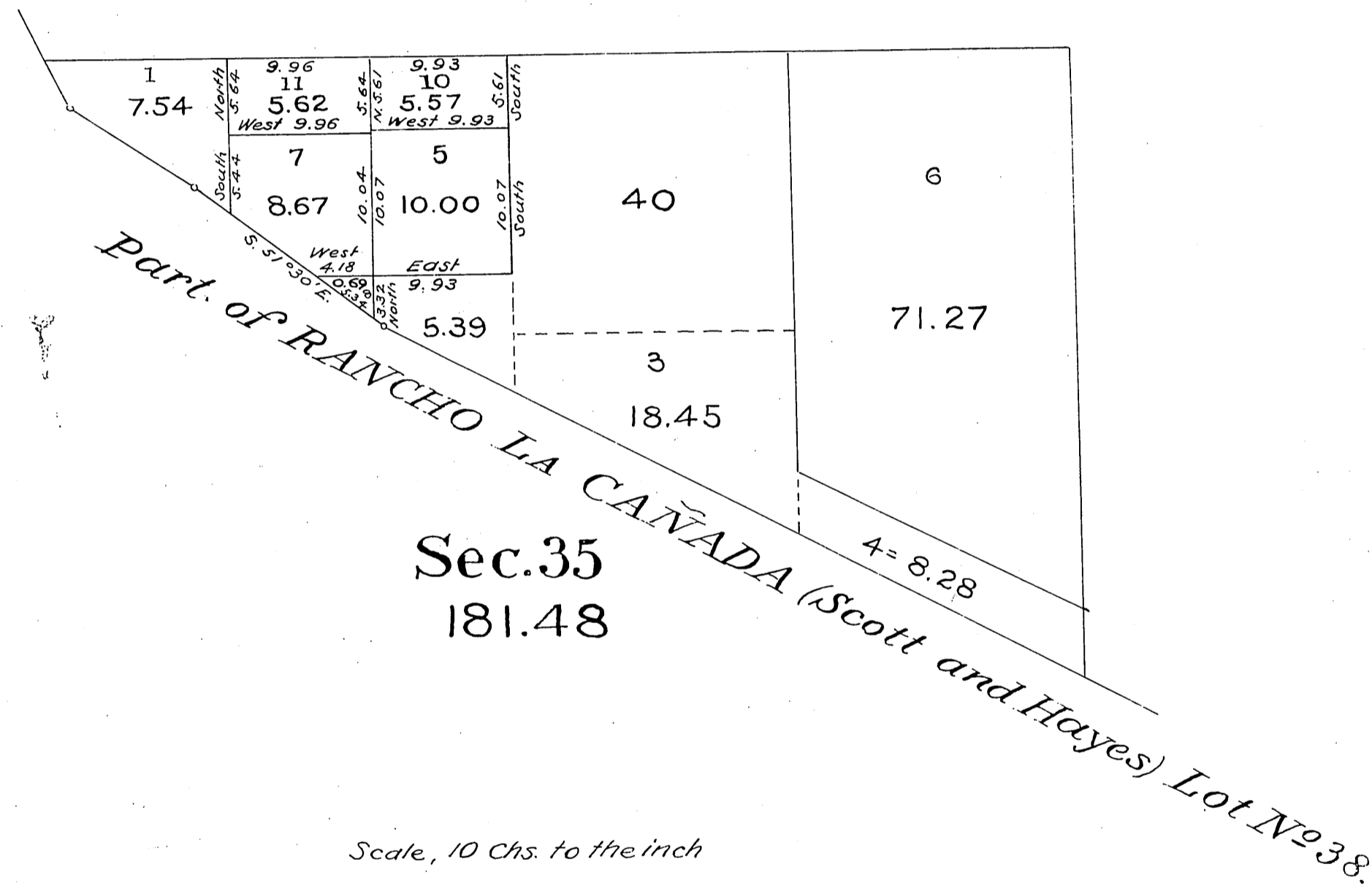
UNITED STATES LAND OFFICE.
LOS ANGELES, CAL.

Filed June 19 1908
this 19TH day of
June 1908 at 9:45 o'clock

R. M.
Frank C. Pusey
Register

OFFICE OF COUNTY SURVEYOR.
R.F.B.

*Supplemental Plat of Section 35 in
Township N°2 North, Range N°13 West, San Bernardino Meridian, California.*



The above supplemental plat of Sec 35, Township N°2 North, Range N°13 West, San Bernardino Meridian, California, correctly shows the areas as amended in conformity to the field notes of survey and to instructions from the General Land Office, contained in letter "E", dated May 7, 1903
U.S. Surveyor-General's Office,
San Francisco, California.
May 21, 1903.

W. S. Graham

U.S. Surveyor-General for California

Received and filed in U.S. Land
Office, Los Angeles, Cal., Aug. 18, 1903.
Register

011812

Sec. 35

T. 3 N., R. 14 W.

Sec 36.

T. 2 N., R. 13 W., S. B. M.

PLAT OF
HOMESTEAD ENTRY SURVEY No. 84
in the
ANGELES NATIONAL FOREST
in

Section 1 unsurveyed, T. 2 N., R. 13 W.,
Section 12 unsurveyed, T. 2 N., R. 13 W.,

of the
San Bernardino Meridian
California

Field Notes on Homestead Entry No. 84 - C.S. 9371

This plat of Homestead Entry Survey No. 84 situated in Section 1 unsurveyed, in Township 2 North, of Range 13 West and in Section 12 unsurveyed, in Township 2 North, of Range 13 West and in Section — surveyed, in Township — of Range — and in Section — surveyed, in Township — of Range — of the San Bernardino Meridian is strictly conformable to the field notes of the Survey thereof, on file in this office, which have been examined and approved

Office of U.S. Surveyor General
San Francisco, California.
February 5, 1914

E. H. Archer
U.S. Surveyor General
for California.

Sec. 2.

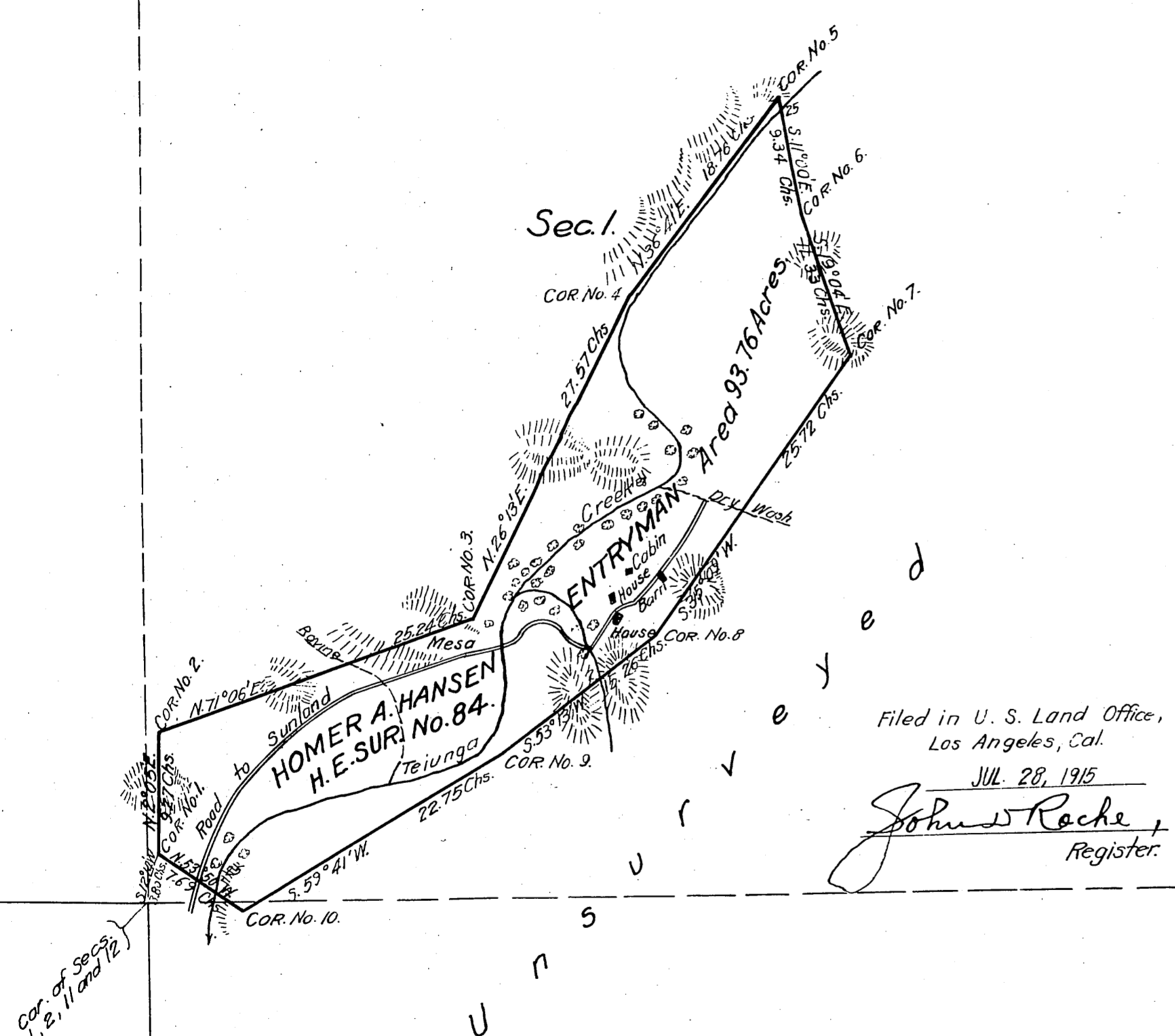
Sec. 6.

T. 2 N., R. 12 W.

Sec. 7.

Sec. 11.
Surveyed.

Sec. 12.



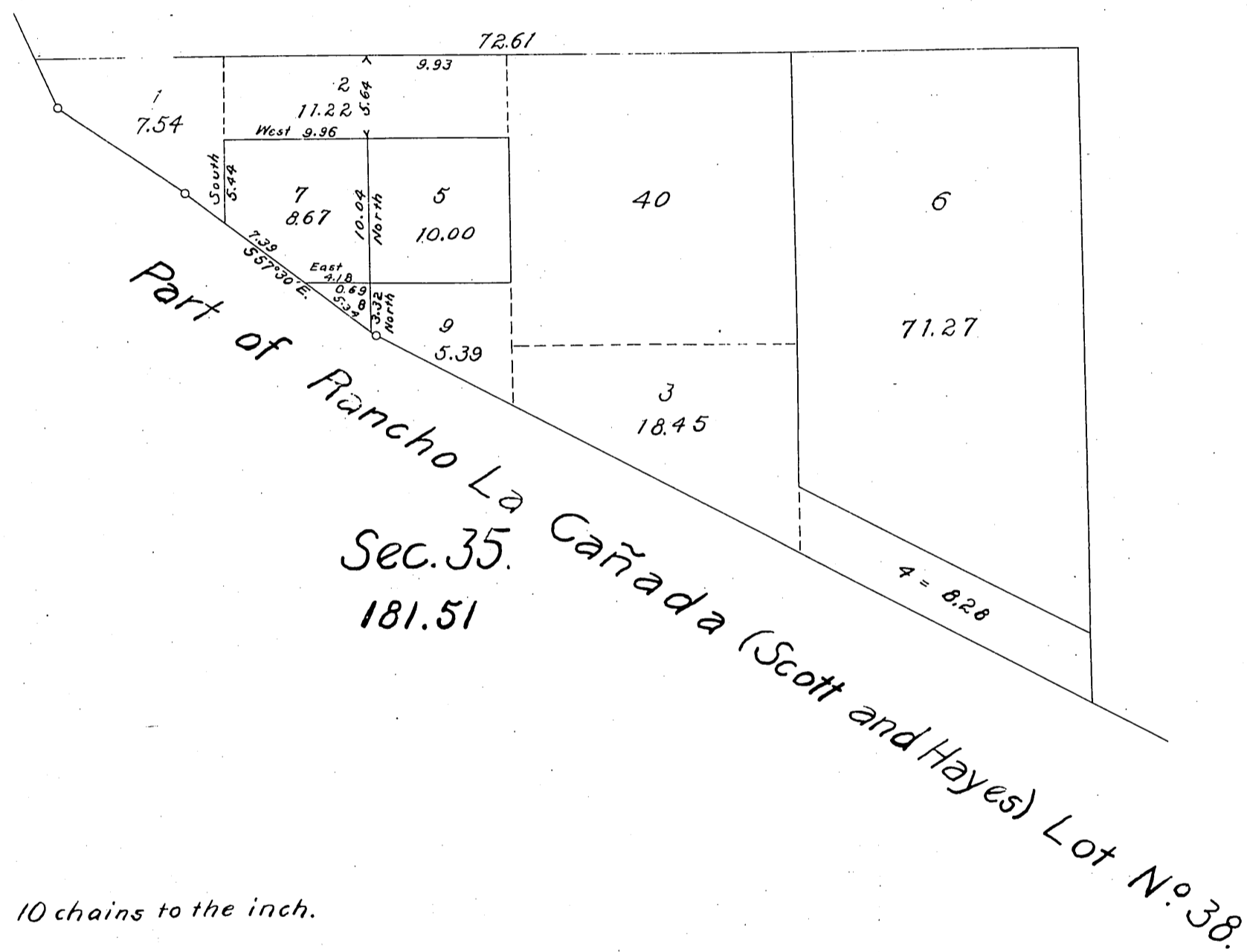
Scale
10 Chains equal 1 inch

Surveys Designated	By Whom Surveyed	Instructions or Contract No.	When Surveyed	Date of Approval
H.E. Survey No. 84	Percy L. Day		Nov. 1, 1913	Nov. 28, 1913
Subdivision	Louis Ross	276	Dec. 5, 1908	Nov. 15, 1908
				Aug. 11, 1911

Areas		Conflicts
H.E. Survey No. 84		
In Sections 1 & 12	93.76	
In Section		
In Section		
In Section		
Total	93.76	

List No. 5-491 Date, Aug. 30, 1910.
Act of June 11, 1906; Act of Mar. 4, 1913.
Latitude 34° 17' N. At
Longitude 118° 12' W. Cor. No. 1.
Mean Mag. Decl. 15° 0' E.

Supplemental Plat of Section 35 in
Ship N° 2 North, Range N° 13 West, San Bernardino Meridian, California.



The above supplemental plat of Section 35, Township N° 2 North, Range N° 13 West, San Bernardino Meridian, California, correctly shows the areas as amended in conformity to the field notes of survey and to instructions from the General Land Office, contained in letter "E" dated April 12, 1902.

U.S. Surveyor-General's Office.
San Francisco, California
July 14, 1902.

W. S. Graham
U.S. Surveyor-General
for California

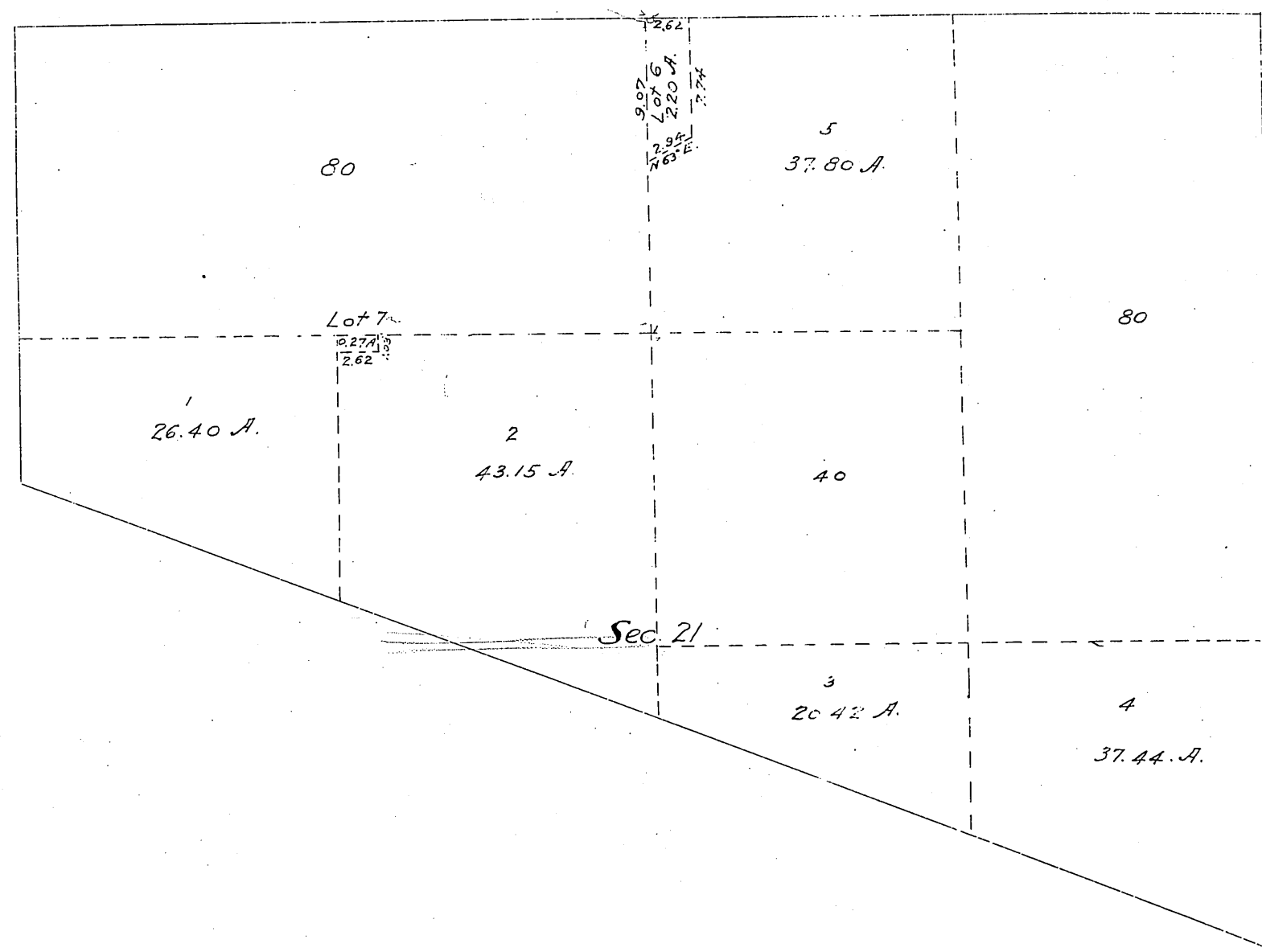
Filed in U.S. Land Office, Los Angeles, Cal., July 31, 1902.
G. J. Lusk
Register

*Supplemental Diagram
of*

Frac'l Sec. 21, Tp. 2 N., R. 13 W., S.B.M.,

CALIFORNIA.

Scale, 10 chs. = 1 inch



E. W. B.
A. W. B.

J. K. R.
Department of the Interior,
General Land Office,
Washington, D.C., Aug. 28, 1907,

*I hereby certify that the above is a plat of the subdivisions made in accordance
with Section 2219 U.S. Revised Statutes viz: Frac'l Sec. 21, Tp. 2 N., R. 13 W., S.B.M.,
California; and is strictly conformable to the field notes of survey on file in this office*

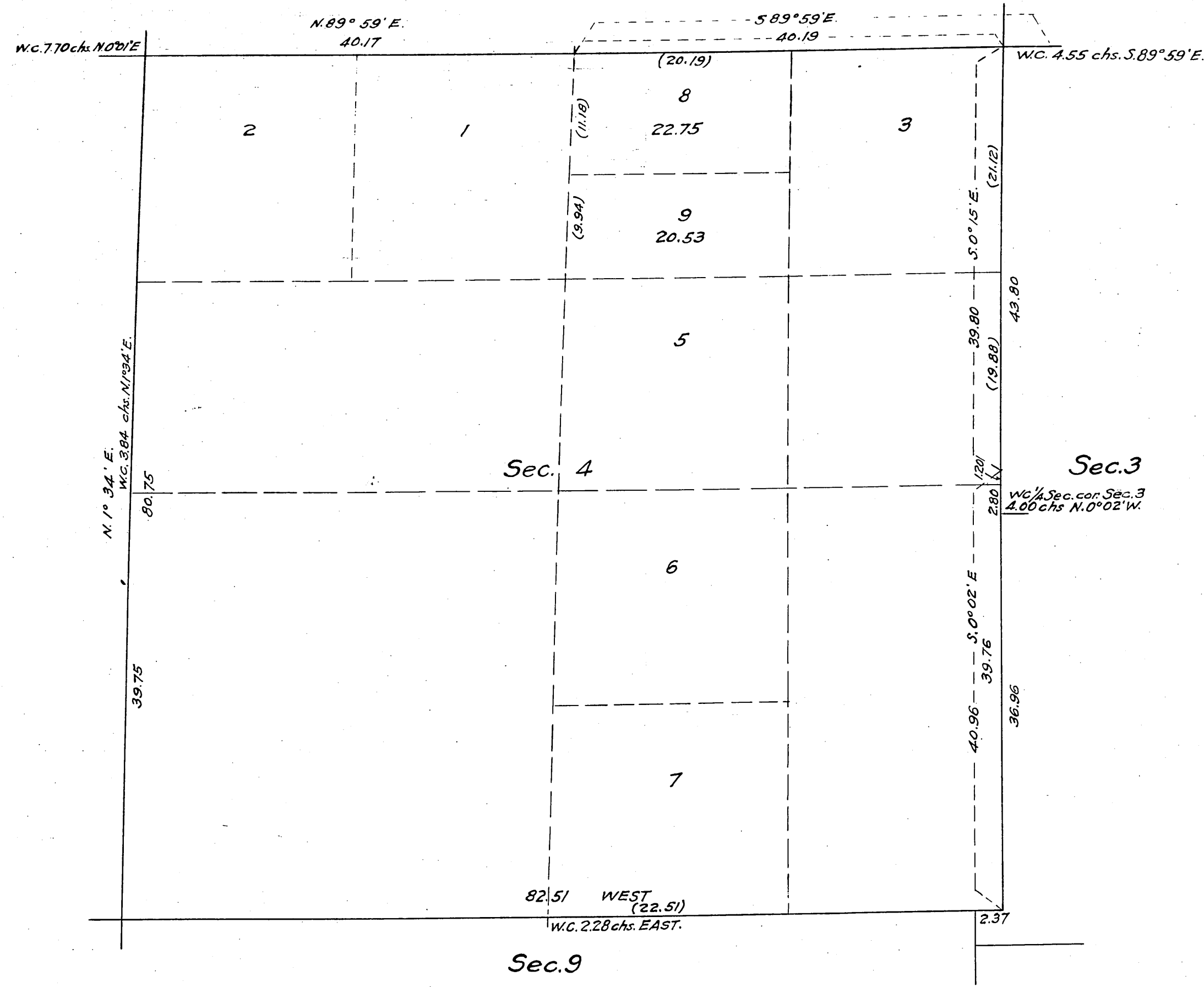
Fred Bennett
Assistant Commissioner

Filed Sep. 10, 1907 - 9 A.M.
U.S. Land Office
Los Angeles Cal.

Traced by	H. Gorman	6-7-21
Checked by	F.W. Haskell	6-10-21

SUPPLEMENTAL PLAT OF SECTION 4,
TOWNSHIP NO. 2 NORTH, RANGE NO. 13 WEST, SAN BERNARDINO MERIDIAN, CALIFORNIA.

RECEIVED
U. S. LAND OFFICE
LOS ANGELES, CALIF.
Date MAY 25, 1927
Hour



Scale 10 chains to an inch.

Authorization, letter Los Angeles 017556 "E" RWH dated April 11, 1927.

This supplemental plat, showing the subdivision of Lot 4, Section 4, T. 2 N., R. 13 W., S. B. M., California, plat approved June 9, 1926, is made for the purpose of obtaining the area and legal description of the subdivisions thereof to accommodate forest homestead entry Los Angeles 017556 of Mary M. Hansen, described in part as the $N\frac{1}{2}$ NW $\frac{1}{4}$ NE $\frac{1}{4}$ of said Section 4, and is hereby approved.
Public Survey Office
San Francisco, California.
April 28, 1927.

Frank E. Barker
Office Cadastral Engineer.

DEPARTMENT OF THE INTERIOR
GENERAL LAND OFFICE

Washington, D. C., May 9, 1927.

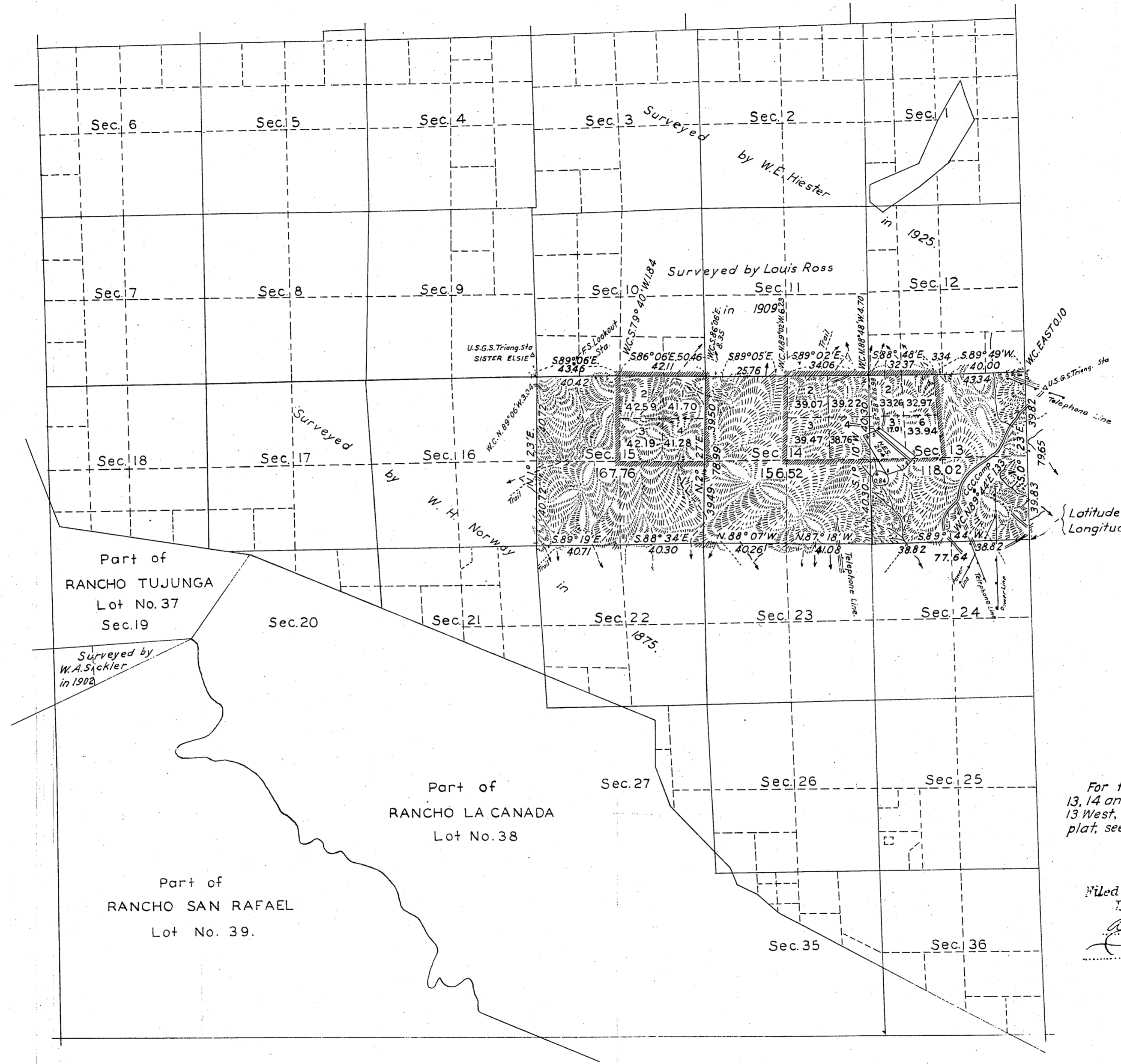
This supplemental plat, having been correctly prepared,
is hereby accepted.

Phoebe Staveland
Assistant Commissioner.

Filed in U. S. Land Office,
Los Angeles, Cal.
May 26, 1927, 9⁰⁰ am
Register.

TOWNSHIP N° 2 NORTH, RANGE N° 13 WEST, SAN BERNARDINO MERIDIAN, CALIFORNIA.

RECEIVED
JUN 23 1936
U. S. LAND OFFICE
LOS ANGELES, CALIF.



For the showing of areas in sections 13, 14 and 15 of Township 2 North, Range 13 West, which are not shown on this plat, see plat approved April 3, 1876.

Filed in U. S. Land Office.
Los Angeles, Cal.
August 26, 1937
Carl Blumenthal
Register

Scale: 40 Chains to an Inch.

Area Resurveyed 1440.00 Acres.
Area Surveyed 442.30 Acres.

LINES DESIGNATED	BY WHOM SURVEYED	GROUP		MILEAGE MLS. CHS.	WHEN SURVEYED	
		N°	DATE		BEGUN	COMPLETED
East Bdy.	John L. Warboys	138	June 10, 1934	79.65	Apr. 10, 1934	May 28, 1935.
Subdivisional	"	"	"	0.12	"	"
Miscellaneous	"	"	"	26.98	"	"

Office of U.S. Supervisor of Surveys
Denver, Colorado, June 15, 1935
The above plat of Township No. 2 North, Range No. 13 West, of the San Bernardino Meridian, California is strictly conformable to the field notes of the survey thereof which have been examined and approved.

Grant M. Johnson
U.S. Supervisor of Surveys.

DEPARTMENT OF THE INTERIOR
GENERAL LAND OFFICE
Washington, D.C., January 31, 1936.
The survey represented by this plat having been correctly executed in accordance with the requirements of law and the regulations of this office, is hereby accepted.

Antoinette Funch
Assistant Commissioner.

Traced by V.H.B.
Checked by R.S.B.

P.E.C.