

Township N^o1 South, Range N^o19 West San Bernardino Meridian California



Area of Public Land surveyed 16989.18 Acres
Lots 37 & 38 (Private Grants) 4639.00
Aggregate 21628.18

Govt. Field Notes.
C.S. 9088 - All of Secs. 1, 2, 3, 4, 9, 10, 11, 12, 13, 14, 15, 16.
Sec's. 22, 23, 27, 26, 35 & 36 - C.S. 9168
Sec 5, 8 C.S. 9319
Port of interior, rancho and township
lines - C.S. 9356 & F.D. 9449
Sec. 24, 25, 36 + per. rancho line - C.S. 9385

Filed in U. S. Land Office
Los Angeles Cal. April 10. 1900
A. J. Crookshank
Register

Lat. 34°02'N } at T.M. 10
Long 118°51'W }

True magn. decl. 14°56' East.
The above Map of Township
N^o1 South, Range N^o19 West San Bernardino Meridian, Cal. is strictly
conformable to
the field notes of the surveys thereon file in this Office which have been
examined and approved
U.S. Surveyor General's Office
San Francisco Cal.
March 3rd 1897

W.S. Green
U.S. Surv. Genl. Cal.

Surveys Designated	By whom surveyed	Contract No.	Date	Amount of Surveys	When surveyed
South bdy of Township	H. Washington		October 4, 1852		1853
Boundaries of Lot No 37	G. H. Thompson	Inst.	Aug 17, 1868		1870
" " " 38	J. E. Terrell	"	Aug 1, 1860		1861
East bdy of Township	J. R. Glover	129	July 2, 1896		1896
Base Line (Nbd of Tn), new	J. R. Glover	137	Nov. 7, 1896	6 00 00	1896
West bdy of Township, new	"	"	"	3 35 93	"
Section lines, new	"	"	"	47 45 81	"
Connecting lines	"	"	"	1 34 71	"
Rancho bdy resurveyed	"	"	"	6 28 00	Dec 17, 1896
" " " " " " " "	J. R. Glover	Inst.	Sep 7, 1896	2 63 52	1896

I hereby certify the above to be a full, true and correct copy of the original plat of Township
N^o1 North, Range N^o19 West San Bernardino Meridian California approved March 3rd 1897
and on file in this Office
U.S. Surveyor General's Office
San Francisco Cal.
March 8. 1900

J. M. Gleaves
U.S. Surv. Genl. for California

OWNSHIP 1 SOUTH, RANGE 19 WEST, OF THE SAN BERNARDINO MERIDIAN, CALIFORNIA.

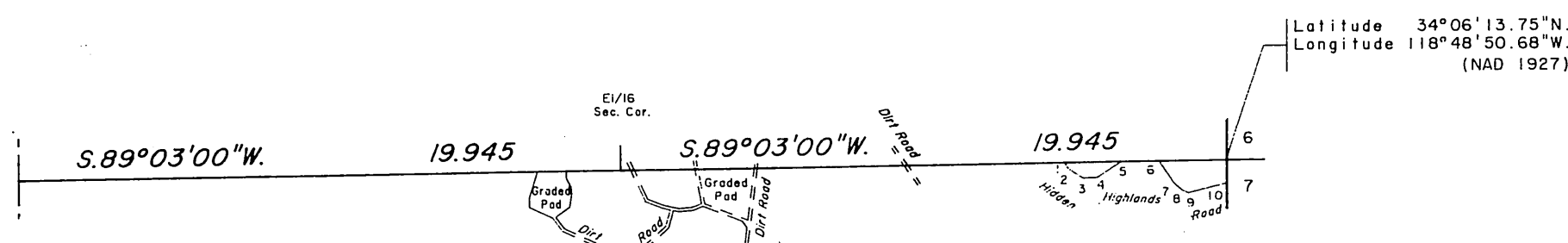
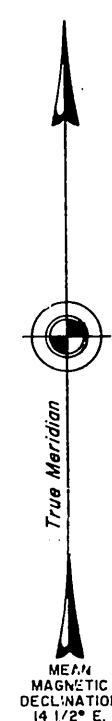
DEPENDENT RESURVEY, AND INFORMATIVE TRAVERSE

A history of surveys is contained in the field notes.

This plat represents the dependent resurvey of a portion of the subdivisional lines, designed to restore the corners in their true original locations according to the best available evidence, and an informative traverse of a portion of Hidden Highlands Road, Township 1 South, Range 19 West, San Bernardino Meridian, California.

Survey was executed by David H. Haller, Cadastral Surveyor, beginning June 11, 1991, and completed June 29, 1992, pursuant to Special Instructions dated May 28, 1991, for Group No. 1118, California.

Sec. 1



Latitude 34° 06' 13.75" N.
Longitude 118° 48' 50.68" W.
(NAD 1927)

INFORMATIVE TRAVERSE OF A PORTION OF HIDDEN HIGHLANDS ROAD

From the Point for the intersection
point on the center of Hidden Highlands
Road and the N. bdy. of sec. 12

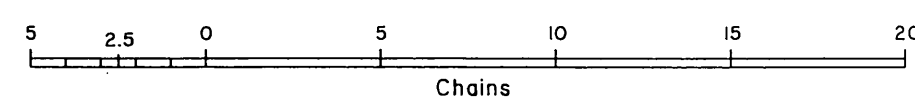
1	S. 32° 00' E.	0.24
2	S. 56° 00' E.	0.58
3	N. 87° 00' E.	0.47
4	N. 56° 00' E.	0.96
5	Intersect the N. bdy. of sec. 12	

From the Point for the intersection
point on the center of Hidden Highlands
Road and the N. bdy. of sec. 12

6	S. 33° 16' E.	0.88
7	S. 48° 43' E.	0.40
8	S. 69° 31' E.	0.19
9	N. 75° 32' E.	1.27
10	Intersect the E. bdy. of sec. 12	

T. 1 S., R. 19 W.

Sec. 12



UNITED STATES DEPARTMENT OF THE INTERIOR
BUREAU OF LAND MANAGEMENT
Sacramento, California

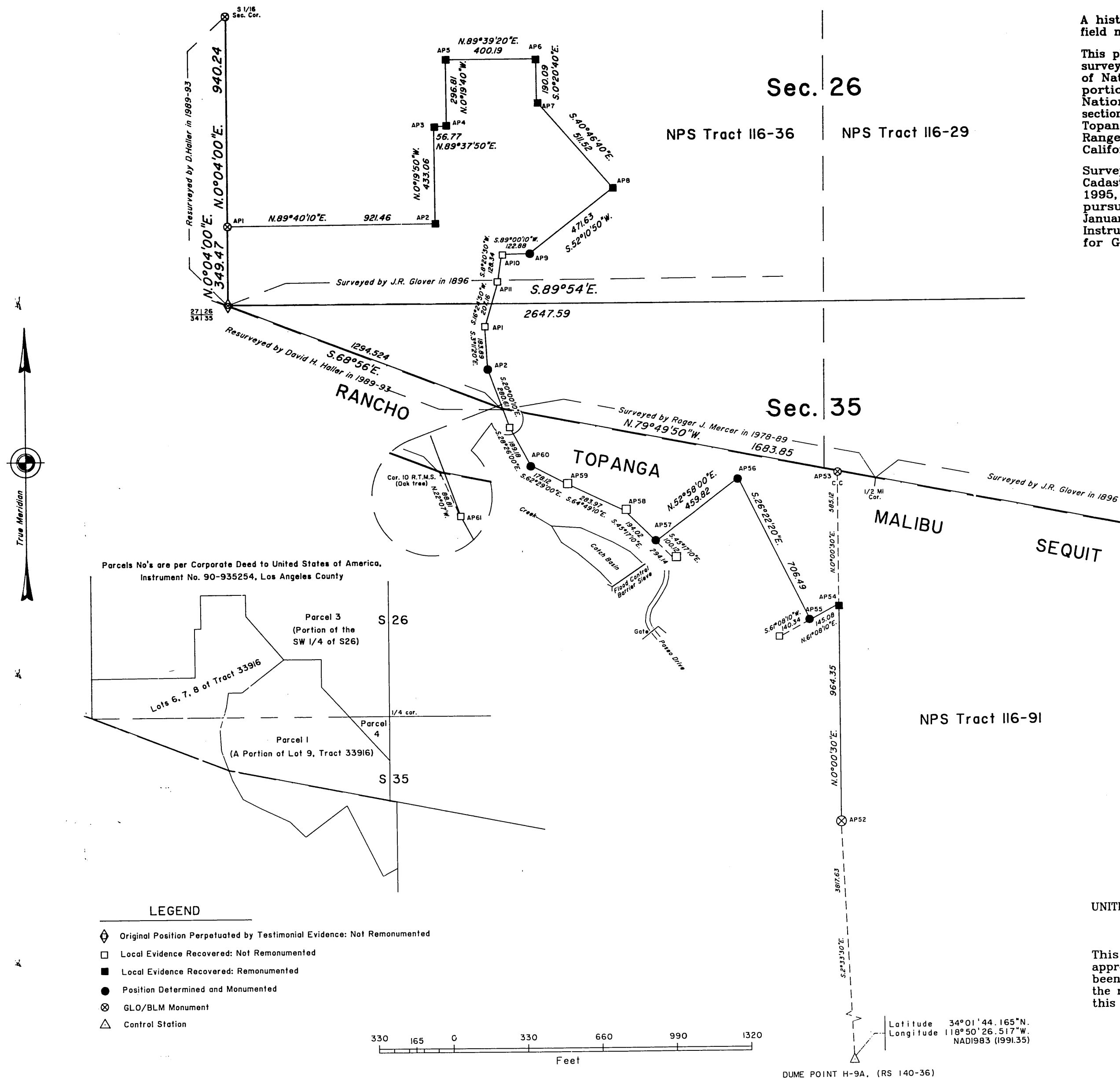
This plat is strictly conformable to the approved field notes, and the survey, having been correctly executed in accordance with the requirements of law and the regulations of this Bureau, is hereby accepted.

For the Director

Clifford A. Robinson September 16, 1992
Chief Cadastral Surveyor—California

TOWNSHIP 1 SOUTH, RANGE 19 WEST, OF THE SAN BERNARDINO MERIDIAN, CALIFORNIA. ORIGINAL

METES-AND-BOUNDS SURVEY



A history of surveys is contained in the field notes.

This plat represents the metes-and-bounds survey of a portion of the south boundary of National Park Service Tract 116-36, a portion of the Santa Monica Mountains National Recreation Area Boundary, in section 26, fractional section 35, and Rancho Topanga Malibu Sequit, Township 1 South, Range 19 West, San Bernardino Meridian, California.

Survey was executed by David H. Haller, Cadastral Surveyor, beginning December 8, 1995, and completed February 27, 1996, pursuant to Special Instructions dated January 30, 1995, and Supplemental Special Instructions No. 1 dated January 31, 1996, for Group 1222, California.

UNITED STATES DEPARTMENT OF THE INTERIOR
BUREAU OF LAND MANAGEMENT
Sacramento, California

This plat is strictly conformable to the approved field notes, and the survey, having been correctly executed in accordance with the requirements of law and the regulations of this Bureau, is hereby accepted.

For the Director
February 4, 1998
James P. Binkley
Chief Cadastral Surveyor - California

DUME POINT H-9A, (RS 140-36)

TOWNSHIP 1 SOUTH, RANGE 19 WEST, OF THE SAN BERNARDINO MERIDIAN, CALIFORNIA.

ORIGINAL

DEPENDENT RESURVEY AND SUBDIVISION OF SECTIONS 13 AND 14

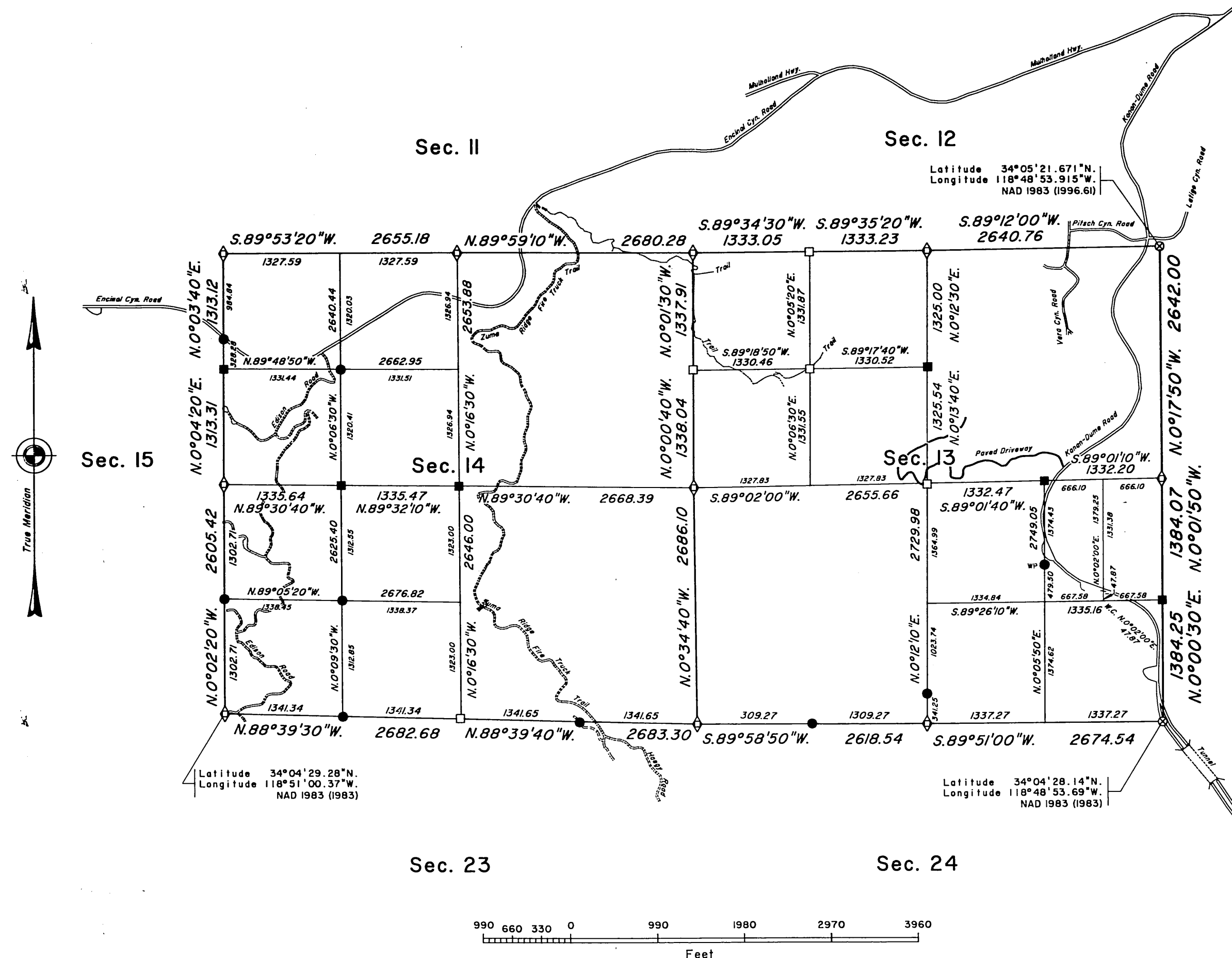
A history of surveys is contained in the field notes.

This plat represents the dependent resurvey of a portion of the east boundary and the subdivisional lines, designed to restore the corners in their true original locations according to the best available evidence, and the subdivision of sections 13 and 14, Township 1 South, Range 19 West, San Bernardino Meridian, California.

The plotted topographic features shown on this plat were compiled using resource grade global positioning system (GPS) satellite receivers, with a published system precision of ± 15 ft.

Lottings and areas are as shown on the township plat approved March 3, 1897.

Survey was executed by David H. Haller, Cadastral Surveyor, beginning March 9, 1995, and completed December 5, 1995, pursuant to Special Instructions dated January 30, 1995, for Group 1222, California.



UNITED STATES DEPARTMENT OF THE INTERIOR
BUREAU OF LAND MANAGEMENT
Sacramento, California

This plat is strictly conformable to the approved field notes, and the survey, having been correctly executed in accordance with the requirements of law and the regulations of this Bureau, is hereby accepted.

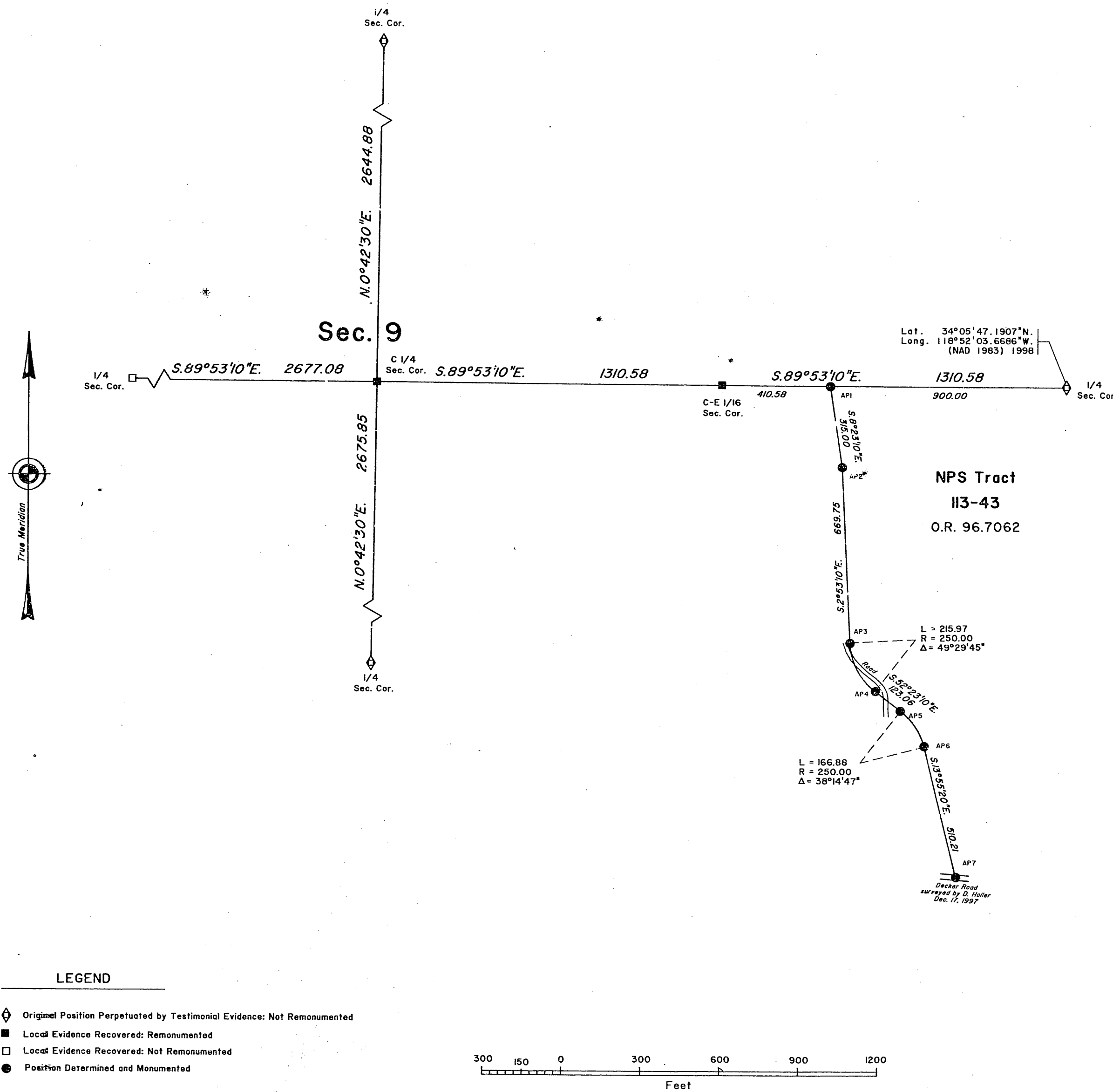
For the Director

James G. Birk, March 12, 1998
Chief Cadastral Surveyor-California

ORIGINAL

TOWNSHIP 1 SOUTH, RANGE 19 WEST, OF THE SAN BERNARDINO MERIDIAN, CALIFORNIA.

CORRECTIVE DEPENDENT RESURVEY



A history of surveys is contained in the field notes.

This plat represents the corrective dependent resurvey of a portion of the subdivisional lines of section 9, and a portion of the National Park Service Tract 113-43, of the Santa Monica Mountains National Recreation Area, Township 1 South, Range 19 West, San Bernardino Meridian, California.

Survey was executed by Richard L. Houston, Cadastral Surveyor, beginning October 7, 1999 and completed April 20, 2000, pursuant to Special Instructions dated January 30, 1995, and Supplemental Special Instructions No. 2 dated August 5, 1997, and Supplemental Special Instructions No. 3 dated October 8, 1999, for Group 1222, California.

UNITED STATES DEPARTMENT OF THE INTERIOR
BUREAU OF LAND MANAGEMENT
Sacramento, California

This plat, having been correctly prepared in accordance with the requirements of law and this Bureau, is hereby accepted.

For the Director

William H. Tweedell
March 14, 2003

ACTING Chief Cadastral Surveyor-California

TOWNSHIP 1 SOUTH, RANGE 19 WEST, OF THE SAN BERNARDINO MERIDIAN, CALIFORNIA.

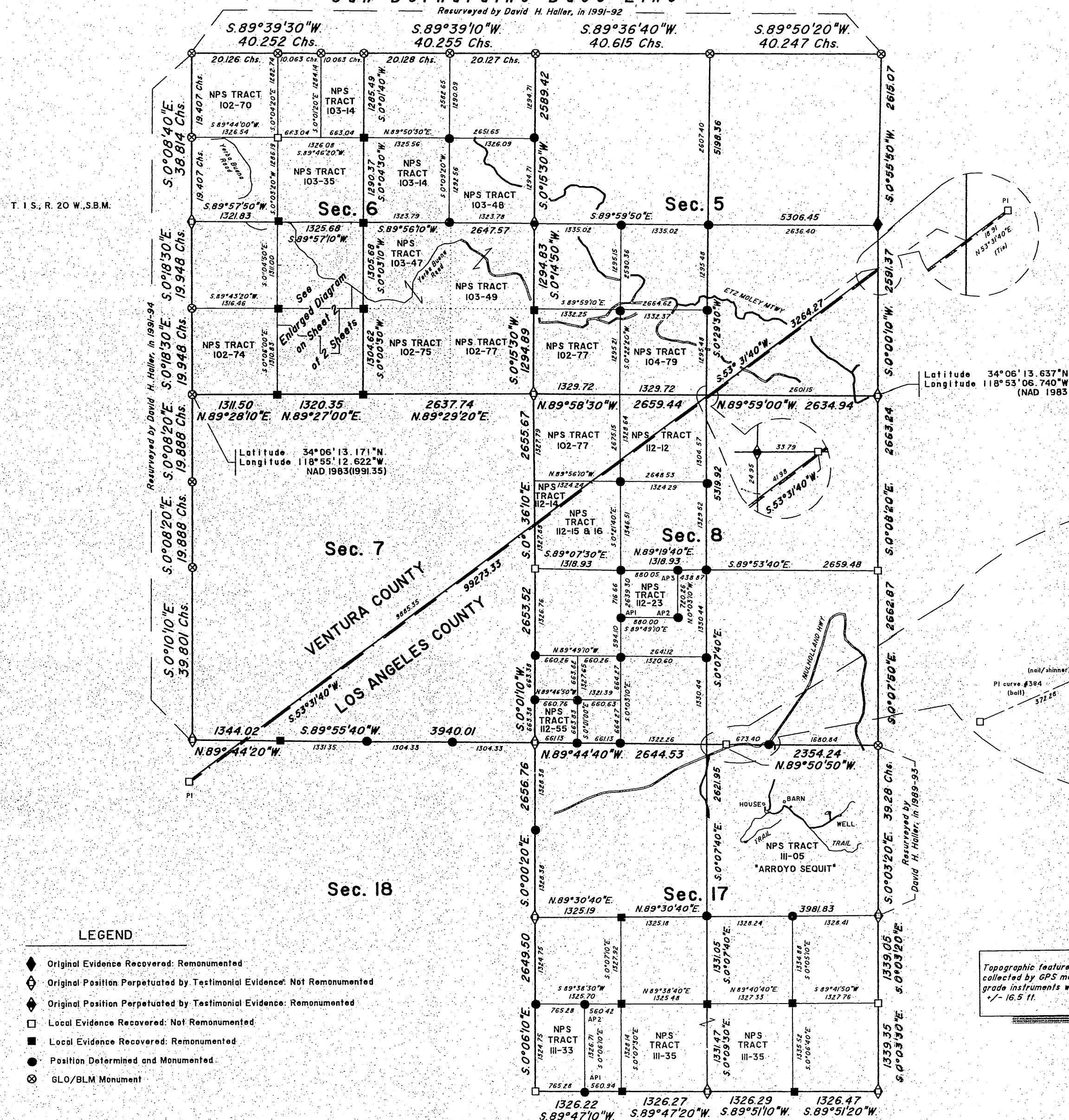
DEPENDENT RESURVEY, SUBDIVISION, AND METES-AND-BOUNDS SURVEY

T. 1 N., R. 19 W., S.B.M.

San Bernardino Base Line

Resurveyed by David H. Haller, in 1991-92

T. 1 S., R. 20 W., S.B.M.



A history of surveys is contained in the field notes.

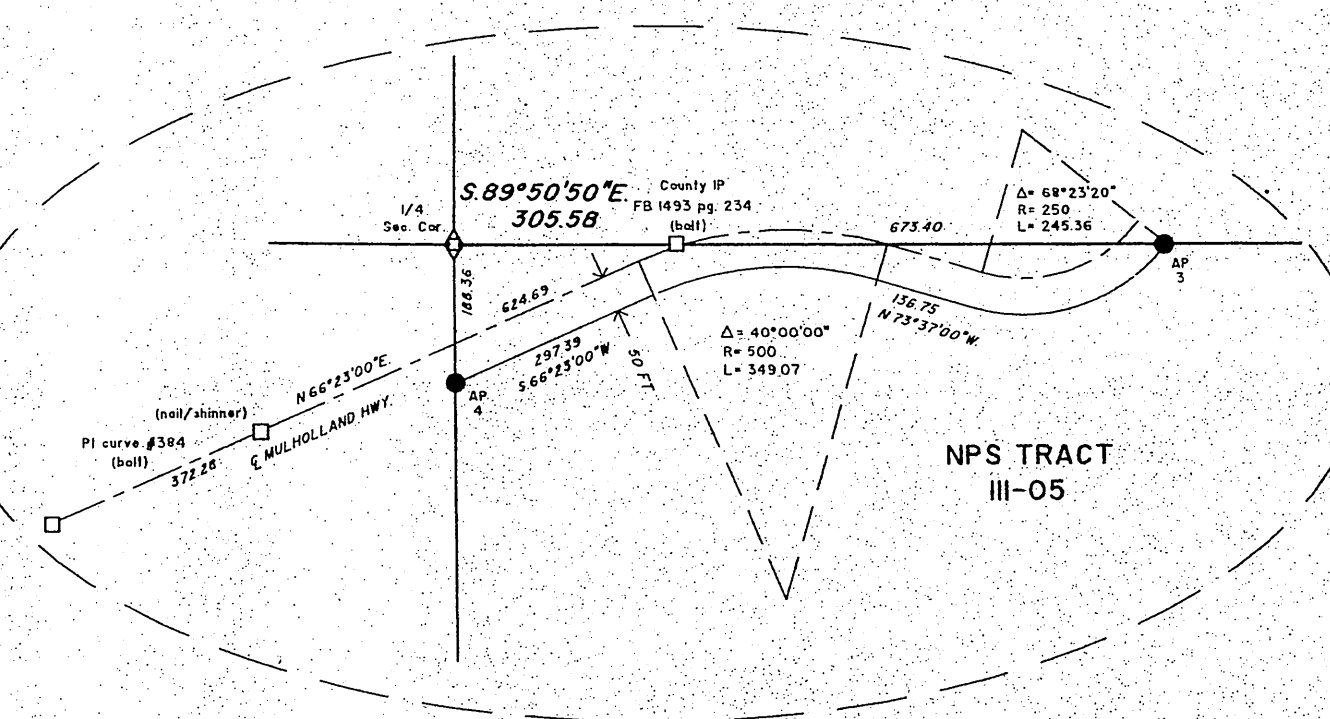
This plat, in two (2) sheets, represents the dependent resurvey of the subdivisional lines, designed to restore the corners in their true original locations according to the best available evidence, the subdivision of sections 5, 6, 8 and 17, and the metes-and-bounds survey of certain NPS Tracts of the Santa Monica Mountains National Recreation Area in Township 1 South, Range 19 West, of the San Bernardino Meridian, California.

Except as depicted hereon, lotting and areas are as shown on the township plat approved March 3, 1897.

Survey was executed by Land Surveyors, David Haller and Richard L. Houston, beginning November 18, 1991 and completed on September 27, 2001, pursuant to Special

Instructions dated November 18, 1991, and Supplemental Special Instructions No. 1 dated January 23, 1992, and Supplemental Special Instructions No. 2 dated September 27, 1993, for Group No. 1130.

Latitude 34°06'13.637"N
Longitude 118°53'06.740"W
(NAD 1983)



UNITED STATES DEPARTMENT OF THE INTERIOR
BUREAU OF LAND MANAGEMENT
Sacramento, California

This plat, having been correctly prepared in accordance with the requirements of law and this Bureau, is hereby accepted.

For the Director

James J. P. [Signature] October 24, 2003
Chief Cadastral Surveyor-California

ORIGINAL

SHEET 2 OF 2 SHEETS

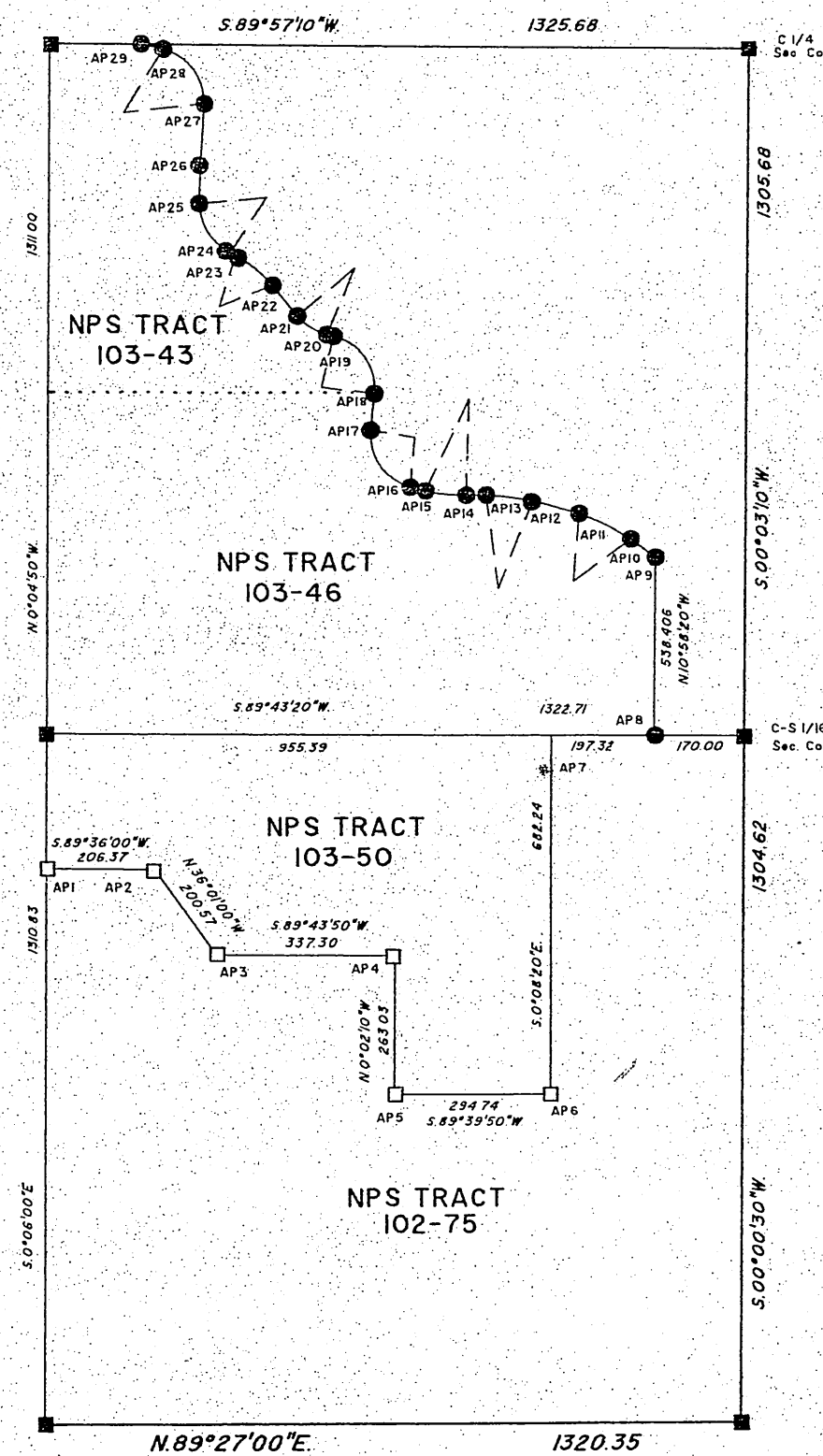
TOWNSHIP 1 SOUTH, RANGE 19 WEST, OF THE SAN BERNARDINO MERIDIAN, CALIFORNIA.

DEPENDENT RESURVEY, SUBDIVISION, AND METES-AND-BOUNDS SURVEY

Reference should be made to Sheet No. 1
for survey information.

ENLARGED DIAGRAM

Sec. 6



Traverse of the Northerly Boundary of Tracts 103-43 and Tracts 103-46	
Beginning at	Course Distance
AP9	N 53°33'30"W 58.27
AP10	L = 111.22 R = 300.00 Δ = 21°14'30"
AP11	N 74°48'00"W 91.67
AP12	L = 87.66 R = 300.00 Δ = 16°44'30"
AP13	S 88°27'30"W 38.41
AP14	L = 77.71 R = 300.00 Δ = 14°50'30"
AP15	N 76°42'00"W 29.85
AP16	L = 144.31 R = 100.00 Δ = 82°41'0"
AP17	N 5°59'00"E 70.09
AP18	L = 482.71 R = 100.00 Δ = 276°54'30"
AP19	N 77°26'30"W 13.13
AP20	L = 56.80 R = 100.00 Δ = 38°16'30"
AP21	N 39°10'00"W 74.64
AP22	L = 91.48 R = 200.00 Δ = 26°12'30"
AP23	N 65°22'30"W 10.96
AP24	L = 116.21 R = 100.00 Δ = 66°35'0"
AP25	N 1°12'30"E 72.07
AP26	N 5°14'00"E 117.15
AP27	L = 488.39 R = 100.00 Δ = 279°1'30"
AP28	N 77°44'30"W 42.44
AP29	

LEGEND

- Local Evidence Recovered: Not Remonumented
- Local Evidence Recovered: Remonumented
- Position Determined and Monumented



UNITED STATES DEPARTMENT OF THE INTERIOR
BUREAU OF LAND MANAGEMENT
Sacramento, California

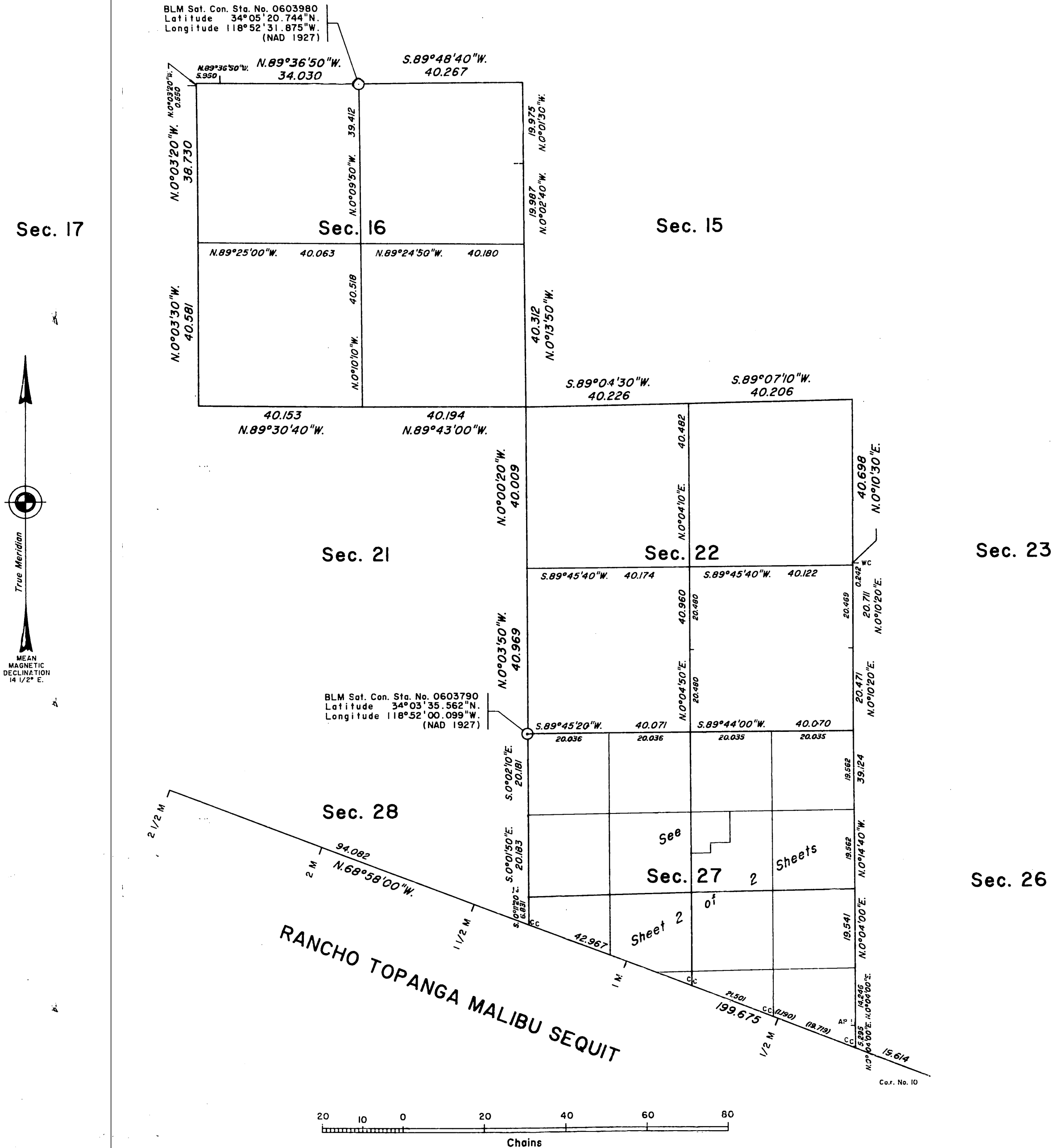
This plat, having been correctly prepared in
accordance with the requirements of law and
this Bureau, is hereby accepted.

For the Director

James J. Piny October 24, 2003
Chief Cadastral Surveyor-California

TOWNSHIP 1 SOUTH, RANGE 19 WEST, OF THE SAN BERNARDINO MERIDIAN, CALIFORNIA.

DEPENDENT RESURVEY AND SURVEY



A history of surveys is contained in the field notes.

This plat, in two (2) sheets represents the dependent resurvey of a portion of Rancho Topanga Malibu Sequit and a portion of the subdivisional lines, designed to restore the corners in their true original locations according to the best available evidence, the subdivision of sections 16, 22 and 27, and the metes-and-bounds survey of a portion of Tracts 116-41, 116-51 and 116-52 of the Santa Monica Mountains National Recreation Area Boundary, Township 1 South, Range 19 West, San Bernardino Meridian, California.

Except as depicted hereon, lottings and areas are as shown on the township plat approved March 3, 1897.

Surveys were executed by David H. Haller, Cadastral Surveyor, beginning May 15, 1989, and completed February 16, 1993, pursuant to Special Instructions dated March 8, 1989, and Supplemental Special Instructions No. 1 dated July 30, 1990, for Group No. 1040, California.

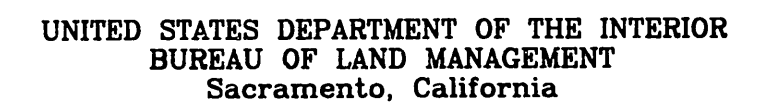
UNITED STATES DEPARTMENT OF THE INTERIOR
BUREAU OF LAND MANAGEMENT
Sacramento, California

This plat is strictly conformable to the approved field notes, and the survey, having been correctly executed in accordance with the requirements of law and the regulations of this Bureau, is hereby accepted.

For the Director

Clifford A. Robinson September 27, 1993
Chief Cadastral Surveyor-California

Reference should be made to Sheet No. 1
for survey information.



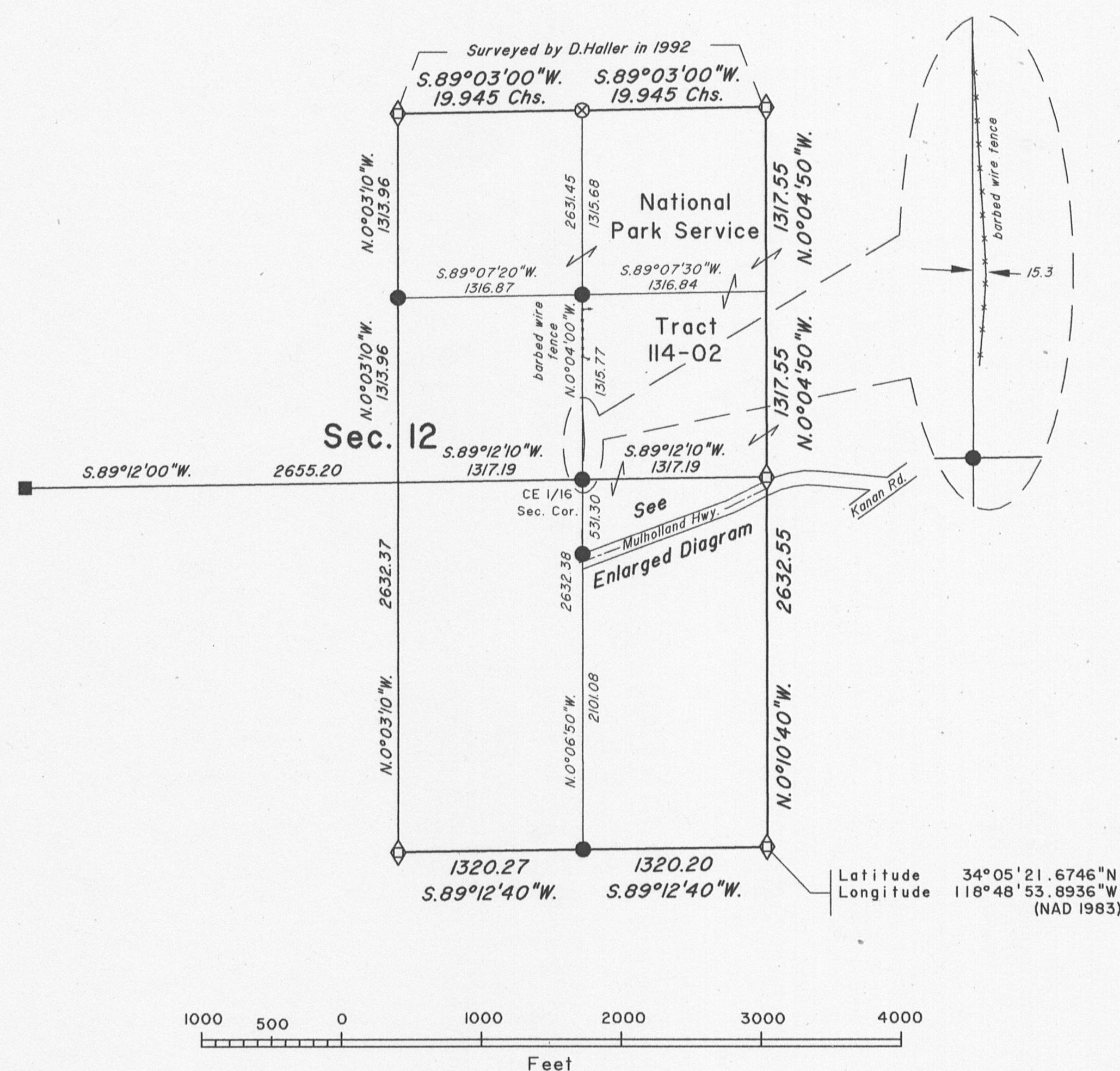
This plat is strictly conformable to the approved field notes, and the survey, having been correctly executed in accordance with the requirements of law and the regulations of this Bureau, is hereby accepted.

For the Director

Chas. C. Seamon September 27, 1995
Chief Cadastral Surveyor-California

TOWNSHIP 1 SOUTH, RANGE 19 WEST, OF THE SAN BERNARDINO MERIDIAN, CALIFORNIA.

DEPENDENT RESURVEY, SUBDIVISION, AND METES-AND-BOUNDS SURVEY



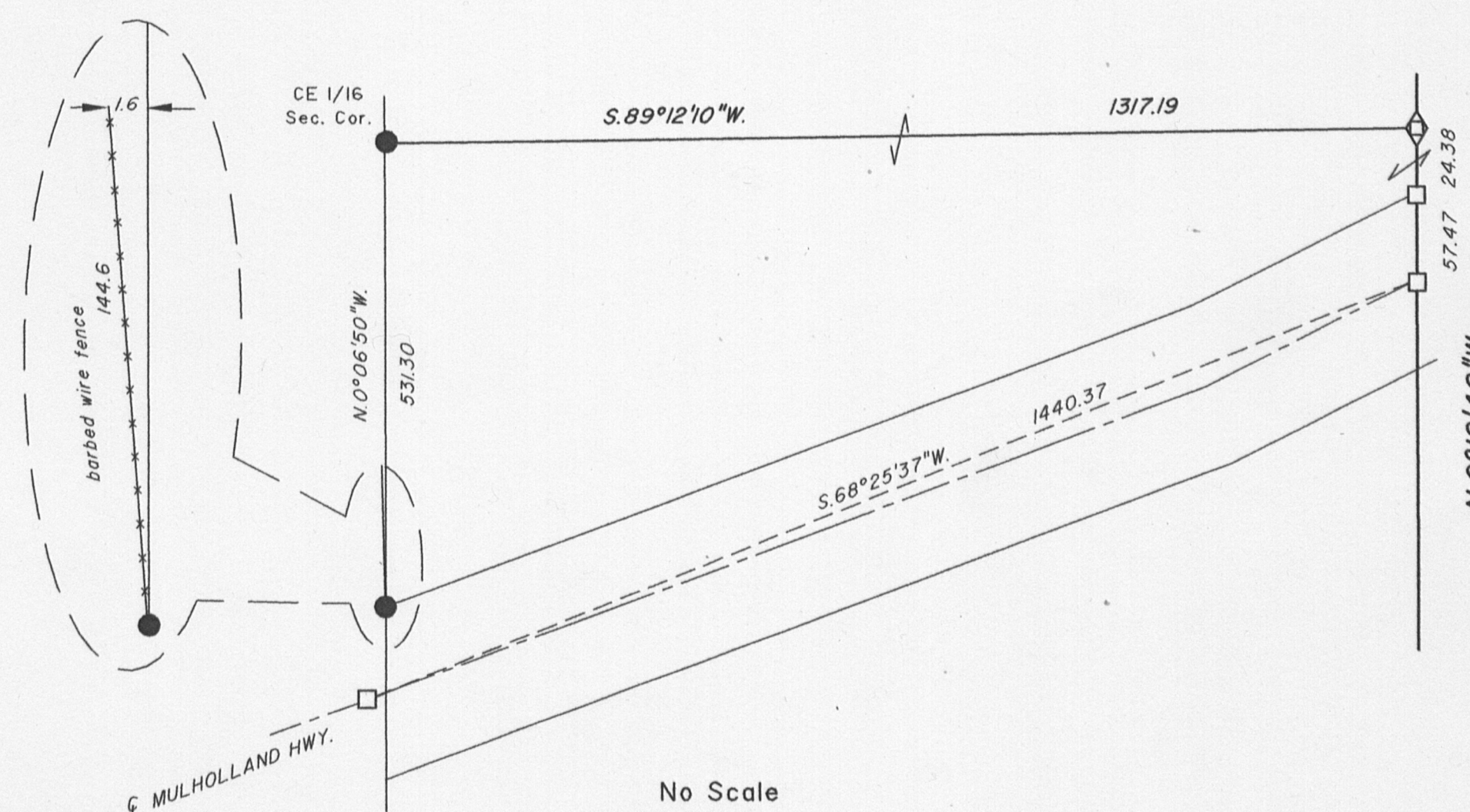
A history of surveys is contained in the field notes.

This plat represents the dependent resurvey of a portion of the east boundary, and the subdivisional lines, designed to restore the corners in their true true original locations according to the best available evidence, the subdivision of section 12, and the metes-and-bounds survey of the National Park Service Tract 114-02, of the Santa Monica Mountains Recreation Area, Township 1 South, Range 19 West, San Bernardino Meridian, California.

The lotting and areas are as shown on the Township plat approved March 3, 1897.

Survey was executed by Richard L. Houston, Cadastral Surveyor, beginning July 9, 2002, and completed September 18, 2002, pursuant to Special Instructions dated July 8, 2002, for Group 1414.

ENLARGED DIAGRAM



LEGEND

- Local Evidence Recovered: Remonumented
- Local Evidence Recovered: Not Remonumented
- Position Determined and Monumented
- ⊗ GLO/BLM Monument
- ◇ Original Position Perpetuated by Testimonial Evidence: Not Remonumented

UNITED STATES DEPARTMENT OF THE INTERIOR
BUREAU OF LAND MANAGEMENT
Sacramento, California

This plat, having been correctly prepared in accordance with the requirements of law and this Bureau, is hereby accepted.

For the Director

Bill D. King (ACTING)

SEPTEMBER 24, 2004

Chief Cadastral Surveyor-California