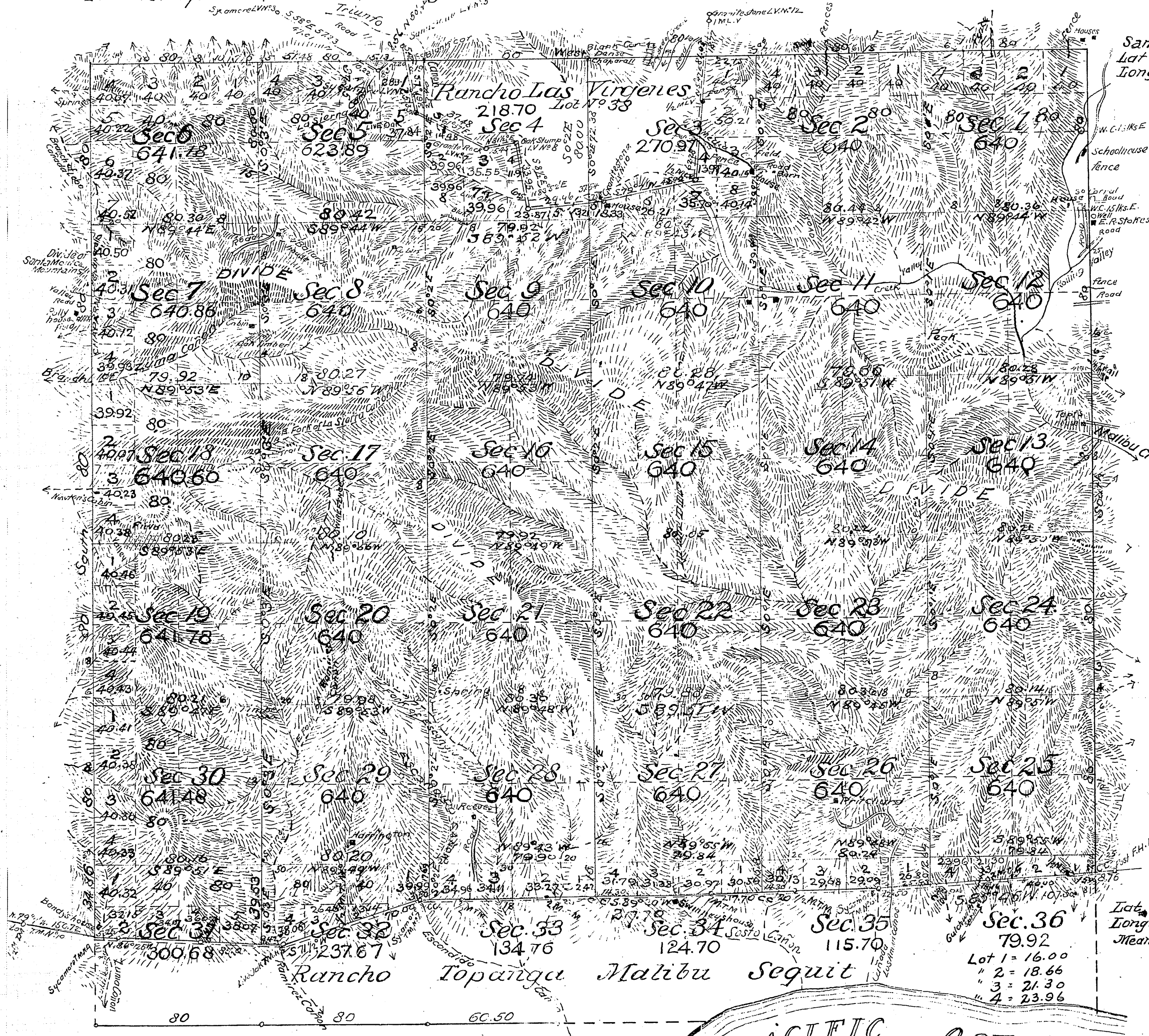


Township N<sup>o</sup> 1 South, Range N<sup>o</sup> 18 West, San Bernardino Meridian, California

T1S  
R18W

San Bernardino Base Line  
Lat 34°07'N  
Long. 118°43'W



Filed in U.S. Land Office Los Angeles. Apr. 4 1900

Gov't Field Notes.  
E. sides Secs 1 and 12 - - - C.S. 9061  
N. Bdy. of Twp. S. Bdy. Ro. Los Virgenes; and Secs. 3 & 4 - C.S. 9082  
W. Bdy. Secs. 6, 7 and 18 - C.S. 9088  
Secs. 14, 15, 22, 23, 26, 27, 33, 34, 35, 36, 10 and 11 - C.S. 9167  
All interior Secs and E. Bdy. C.S. 9219  
Rancho lines - C.S. 9207

Lat. 34°02'N  
Long. 118°44'W  
Mean magn. decl. 14°52' East.

PACIFIC OCEAN

Surveys Designated	By whom surveyed	Contract No.	Date	Amount of Survey in	When surveyed
Part of South half of TP	H. Washington	Inst	Oct 4, 1852	MLS. CH. LKS	1853
Boundaries of Lot N <sup>o</sup> 37	G. H. Thompson	Inst	Aug. 17, 1868		1870
" " " 38 and 39	Wm. Minto	"	May 9, 1882		1882
East half of Township	J. R. Glover	382	Nov. 20, 1884		1895
Base Line, new	J. R. Glover	129	July 2, 1896	see Map of T. 1N. R. 18W	1896
West half of TP, new	"	"	"	5 34 86	"
Section lines new	"	"	"	56 24 89	"
Connecting lines new	"	"	"	1 03 69	Aug. 28, 1897
Rancho bds resurveyed	J. R. Glover	Inst	Sept 7, 1896	9 41 50	Aug. 27, 1897

The above Map of Township N<sup>o</sup> 1 South, Range N<sup>o</sup> 18 West, San Ber. Merid. Cal. is strictly conformable to the field notes of the surveys thereof, have been examined and approved.  
U.S. Surveyor-General's Office  
San Francisco, California.  
June 14<sup>th</sup> 1898  
J. M. Gleaves  
U.S. Surv. Gen'l. Cal.

Aggregate Area of Public Land surveyed 19392.89 Acres  
Estimated " " Lots N<sup>o</sup> 37, 38 & 39 Private Grants 3465.00  
Aggregate 22857.89

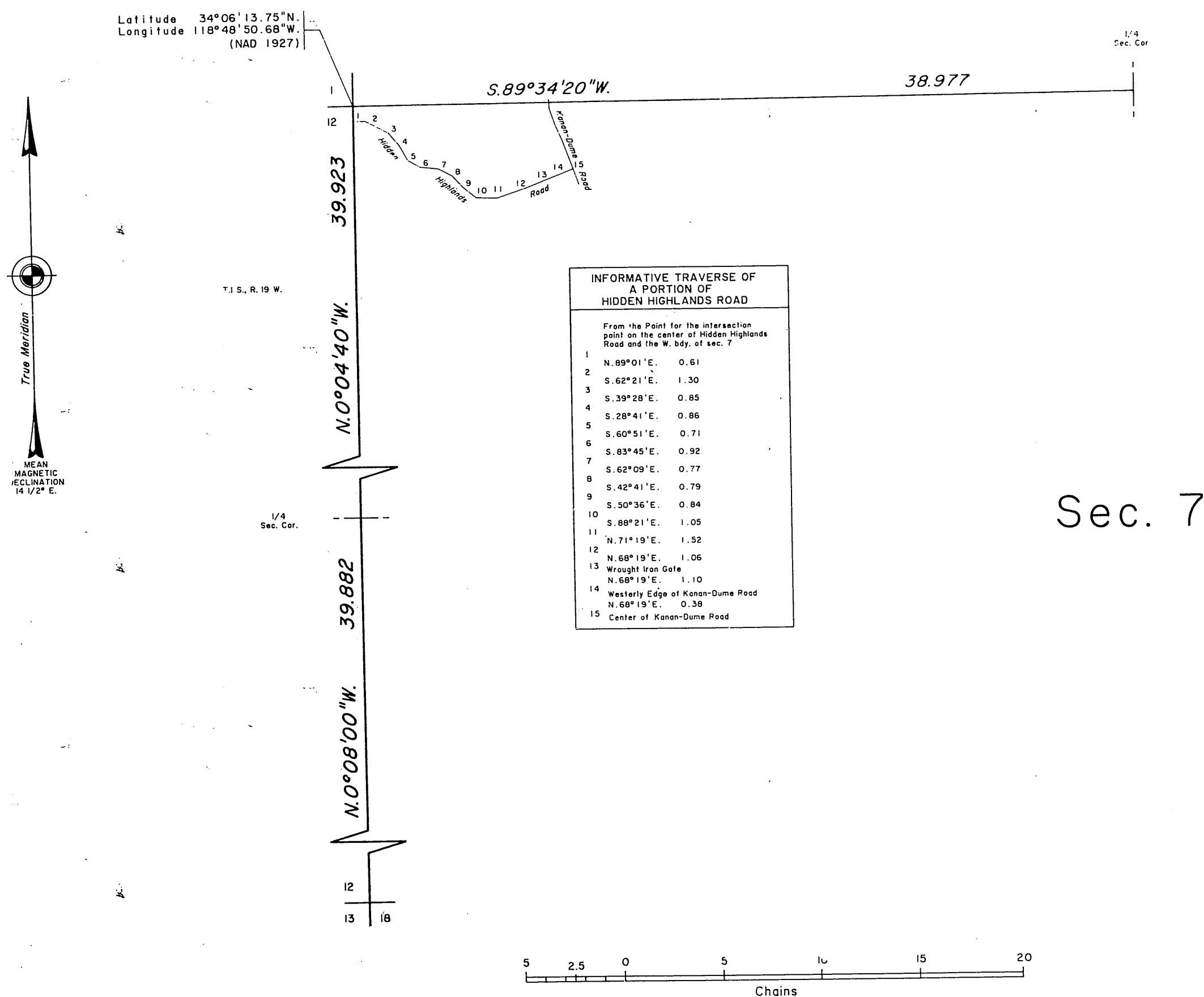
TOWNSHIP 1 SOUTH, RANGE 18 WEST, OF THE SAN BERNARDINO MERIDIAN, CALIFORNIA.  
DEPENDENT RESURVEY, AND INFORMATIVE TRAVERSE

Sec. 6

A history of surveys is contained in the field notes.

This plat represents the dependent resurvey of a portion of the west boundary, a portion of the subdivisional lines, designed to restore the corners in their true original locations according to the best available evidence, and an informative traverse of a portion of Hidden Highlands Road, Township 1 South, Range 18 West, San Bernardino Meridian, California.

Survey was executed by David H. Haller, Cadastral Surveyor, beginning June 11, 1991, and completed June 29, 1992, pursuant to Special Instructions dated May 28, 1991, for Group No. 1118, California.



Sec. 7

UNITED STATES DEPARTMENT OF THE INTERIOR  
BUREAU OF LAND MANAGEMENT  
Sacramento, California

This plat is strictly conformable to the approved field notes, and the survey, having been correctly executed in accordance with the requirements of law and the regulations of this Bureau, is hereby accepted.

For the Director

*Clifford A. Johnson* Sept. 10, 1992  
Chief Cadastral Surveyor—California

T. 1 S., R. 18 W., S.B.M.

## TOWNSHIP 1 SOUTH, RANGE 18 WEST, OF THE SAN BERNARDINO MERIDIAN, CALIFORNIA.

DEPENDENT RESURVEY, SUBDIVISION OF SECTIONS 17 AND 18, AND METES-AND-BOUNDS SURVEY

ORIGINAL

A history of surveys is contained in the field notes.

This plat in two (2) sheets represents the dependent resurvey of a portion of the west boundary and a portion of the subdivisional lines, designed to restore the corners in their true original locations according to the best available evidence, the subdivision of sections 17 and 18, and the metes-and-bounds survey of certain National Park Service tracts in sections 17 and 18, being a portion of the Santa Monica Mountains National Recreation Area Boundary, in Township 1 South, Range 18 West, San Bernardino Meridian, California.

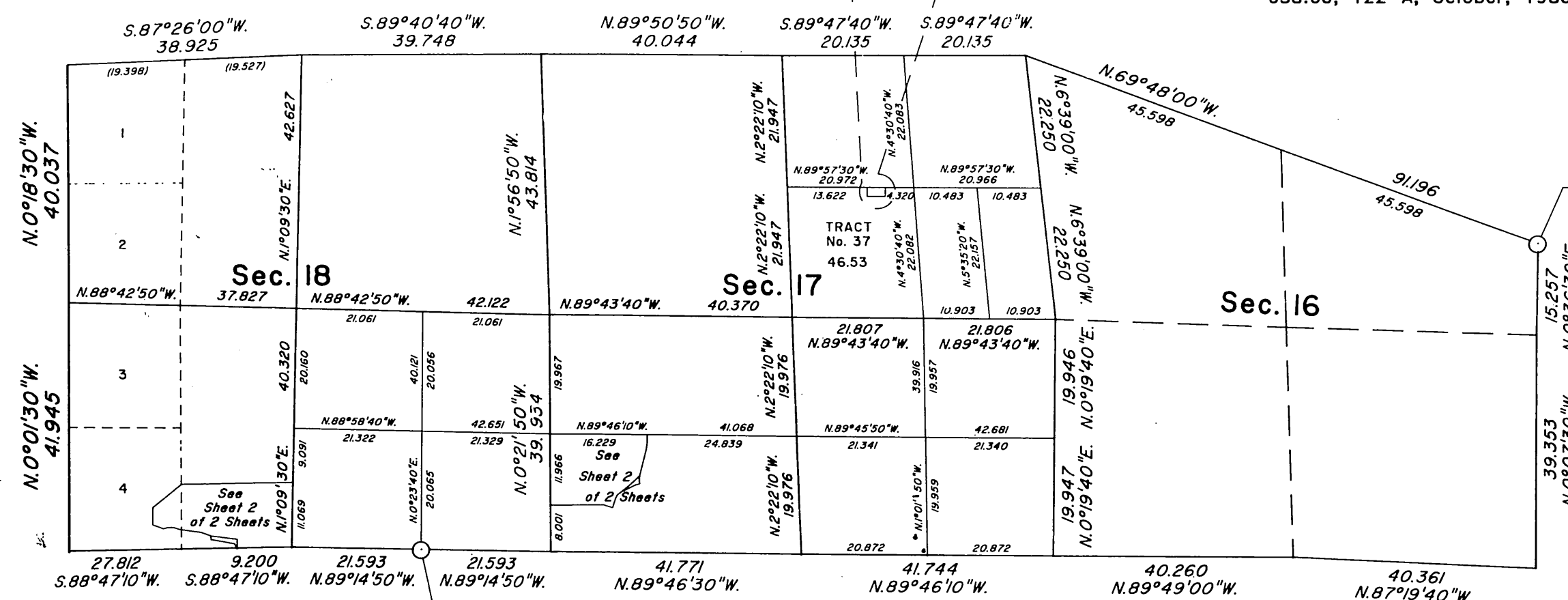
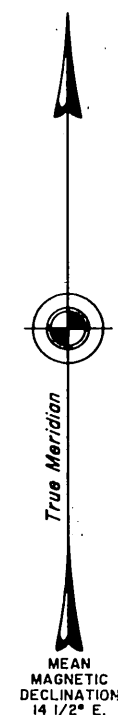
Except as depicted hereon, lottings and areas are as shown on the township plat approved June 14, 1898.

Survey was executed by Robert B. Fink and Richard S. Kaiser, Cadastral Surveyors, beginning January 24, 1989, and completed September 21, 1989, pursuant to Special Instructions dated October 26, 1988, and Supplemental Special Instructions No. 1 dated September 19, 1989, for Group No. 1030, California.

FD 9468

## Note:

Tract No. 37, section 17, is surveyed and referenced as National Park Service Tract No. 122-53, per Segment Map No. 122, Drawing No. 638:60, 122-A, October, 1980.



BLM Sat. Con. Sta. No. 0603990  
Latitude 34°04'28.447"N.  
Longitude 118°48'04.397"W.  
(NAD 1927)

BLM Sat. Con. Sta. No. 0604000  
Latitude 34°05'02.383"N.  
Longitude 118°45'38.673"W.  
(NAD 1927)

10 5 0 10 20 30 40 50 60 70 80  
Chains

UNITED STATES DEPARTMENT OF THE INTERIOR  
BUREAU OF LAND MANAGEMENT  
Sacramento, California

This plat is strictly conformable to the approved field notes, and the survey, having been correctly executed in accordance with the requirements of law and the regulations of this Bureau, is hereby accepted.

For the Director

*Clifford A. Sullivan* February 4, 1992

Chief Cadastral Surveyor-California

## TOWNSHIP 1 SOUTH, RANGE 18 WEST, OF THE SAN BERNARDINO MERIDIAN, CALIFORNIA.

DEPENDENT RESURVEY, SUBDIVISION OF SECTIONS 17 AND 18, AND METES-AND-BOUNDS SURVEY

ORIGINAL

Reference should be made to Sheet No. 1  
for survey information.

## Note:

Tract No. 39, section 18, is surveyed  
and referenced as National Park  
Service Tract No. 122-76 per  
Segment Map No. 122, Drawing No.  
638:60, 122-A, October 1980.

F.D. 9468

## Note:

Tract No. 38, section 17, is surveyed  
and referenced as a portion of National  
Park Service Tract No. 122-57, per  
Segment Map No. 122, Drawing No.  
638:60, 122-A, October 1980.

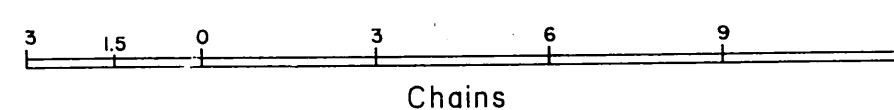
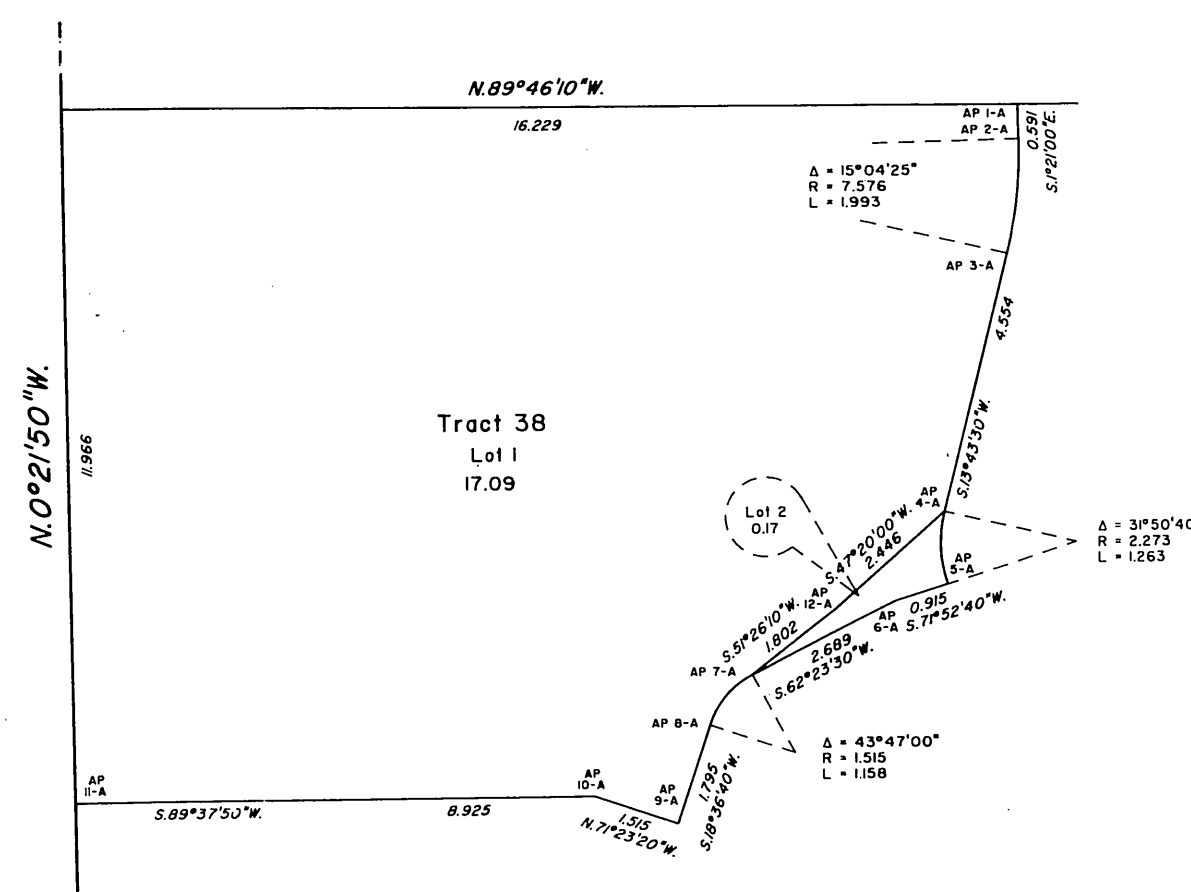
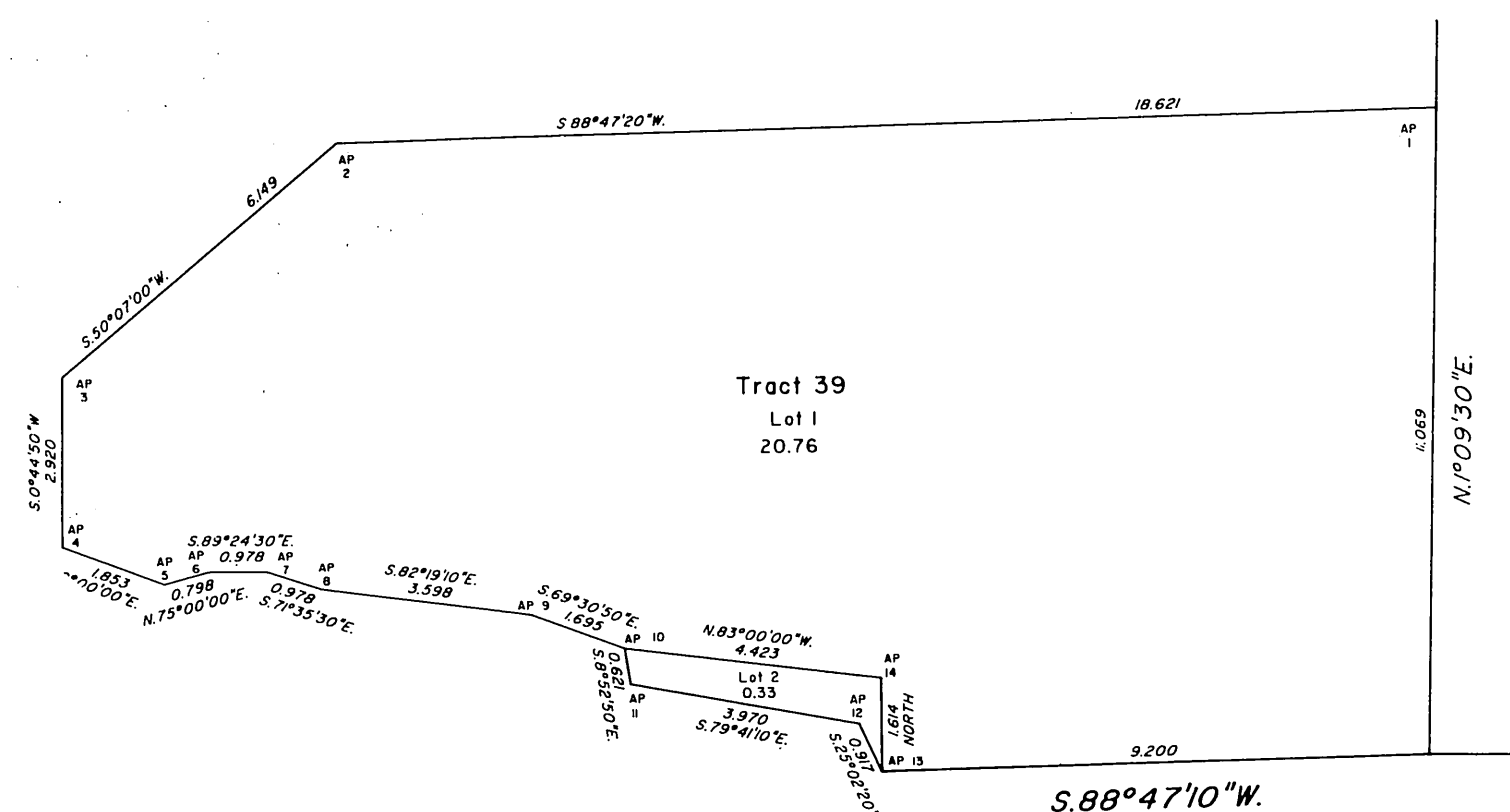
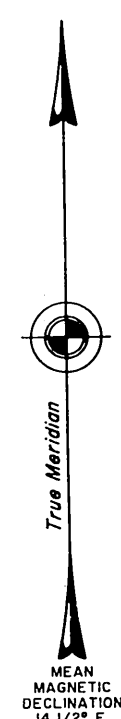
UNITED STATES DEPARTMENT OF THE INTERIOR  
BUREAU OF LAND MANAGEMENT  
Sacramento, California

This plat is strictly conformable to the  
approved field notes, and the survey, having  
been correctly executed in accordance with  
the requirements of law and the regulations of  
this Bureau, is hereby accepted.

For the Director

*Clifford A. Johnson* February 4, 1992

Chief Cadastral Surveyor-California



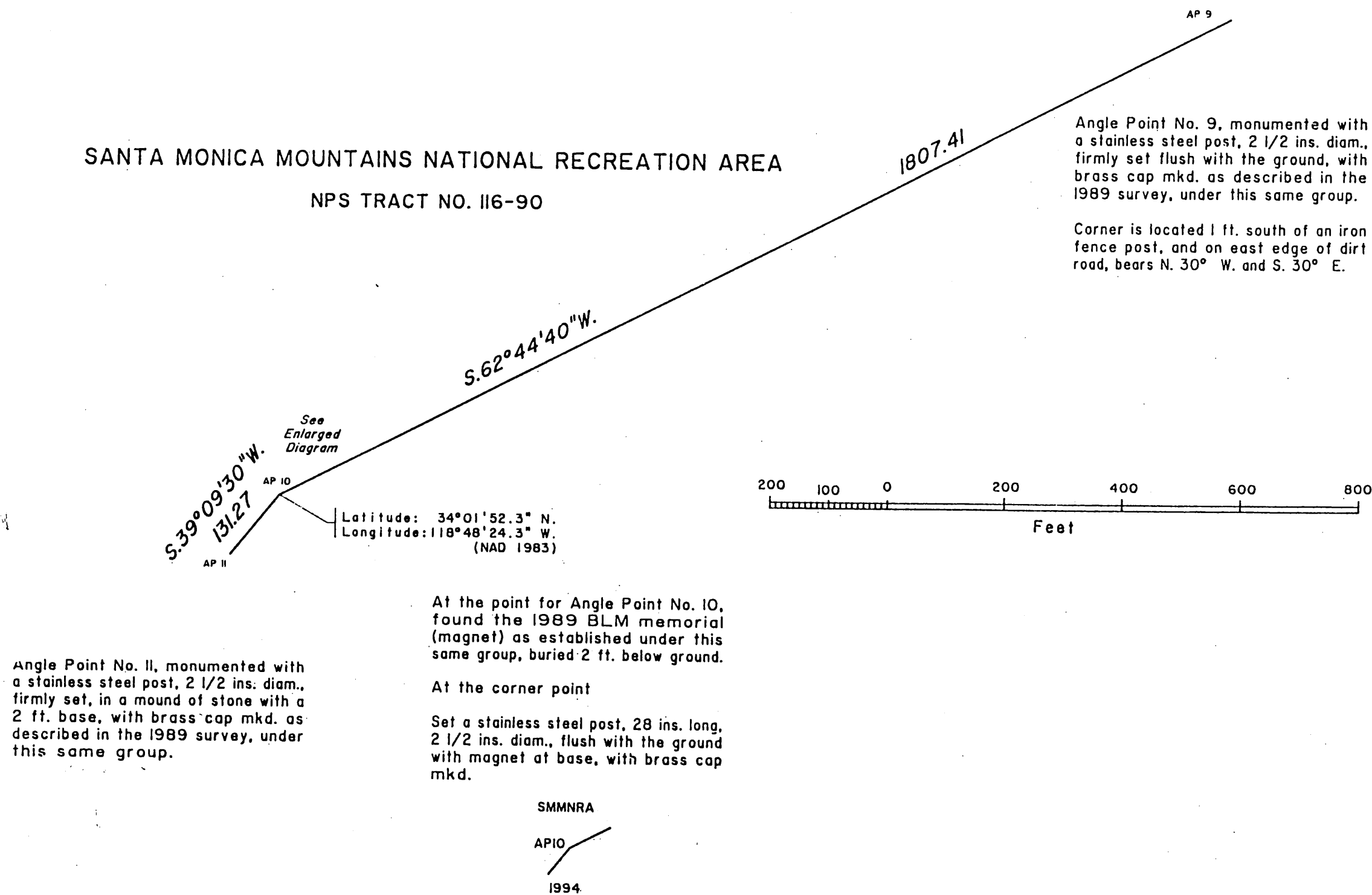




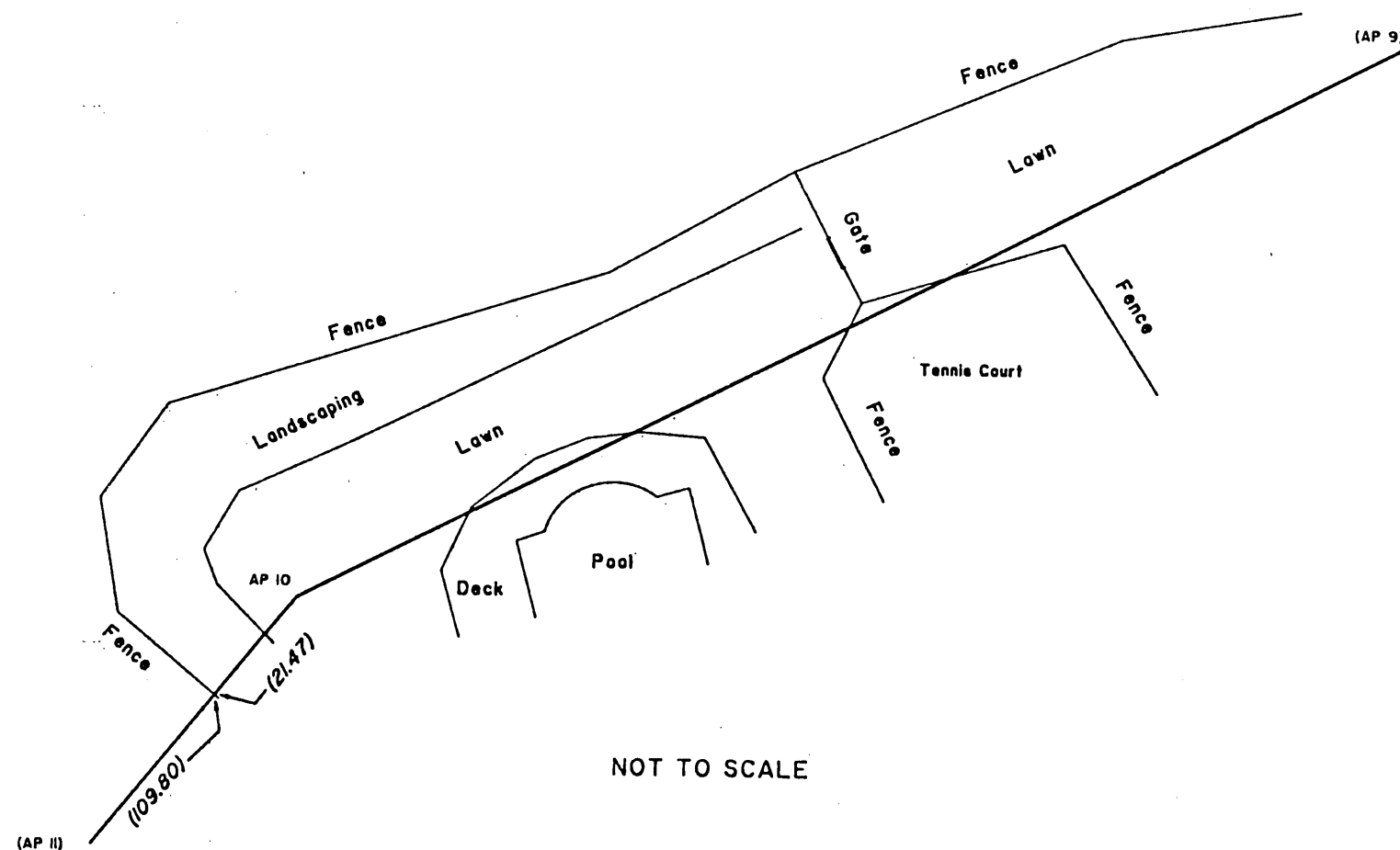
# TOWNSHIP 1 SOUTH, RANGE 18 WEST, OF THE SAN BERNARDINO MERIDIAN, CALIFORNIA. ORIGINAL

## DEPENDENT RESURVEY

SANTA MONICA MOUNTAINS NATIONAL RECREATION AREA  
NPS TRACT NO. 116-90



ENLARGED DIAGRAM



### SURVEY INFORMATION AND CERTIFICATE

This plat represents the entire record of survey, consisting of the dependent resurvey of a portion of the Santa Monica Mountains National Recreation Area, (SMMNRA), Township 1 South, Range 18 West, San Bernardino Meridian, California.

History of prior pertinent surveys:

1989 - Roger J. Mercer, Supervisory Cadastral Surveyor, surveyed a portion of the Santa Monica Mountains National Recreation Area, under this same Group.

Direction of the lines are based on the true meridian as determined by direct stellar methods. The improvements as shown on this plat were accurately tied in by this survey.

The geographic position (NAD 1983) of Angle Point No. 10, as determined by traverse tie to U.S.C.&G.S. Triangulation Station, "Point Dume", are as shown on this plat.

This survey was executed in accordance with specifications as set forth in the Manual of Surveying Instructions, 1973, Special Instructions dated May 18, 1987 approved May 20, 1987, the Supplemental Special Instructions No. 1, dated December 29, 1993, which provided for the surveys included under Group No. 987 and assignment instructions dated January 13, 1994.

Survey commenced January 18, 1994 and completed January 19, 1994. The field assistant was Mike Maki, NPS Ranger.

I, David H. Haller, Cadastral Surveyor, certify that the dependent resurvey of a portion of the Santa Monica Mountains National Recreation Area, was executed by me and under my direction, as described above and as represented on this plat.

David H. Haller  
Cadastral Surveyor

MARCH 4, 1994  
Date

UNITED STATES DEPARTMENT OF THE INTERIOR  
BUREAU OF LAND MANAGEMENT  
Sacramento, California

This plat with corner descriptions and the survey it represents, having been critically examined, is found correct, and in accordance with the requirements of law and the regulations of this Bureau, is hereby accepted.

For the Director  
L. J. Robinson March 7, 1994  
Chief Cadastral Surveyor-California

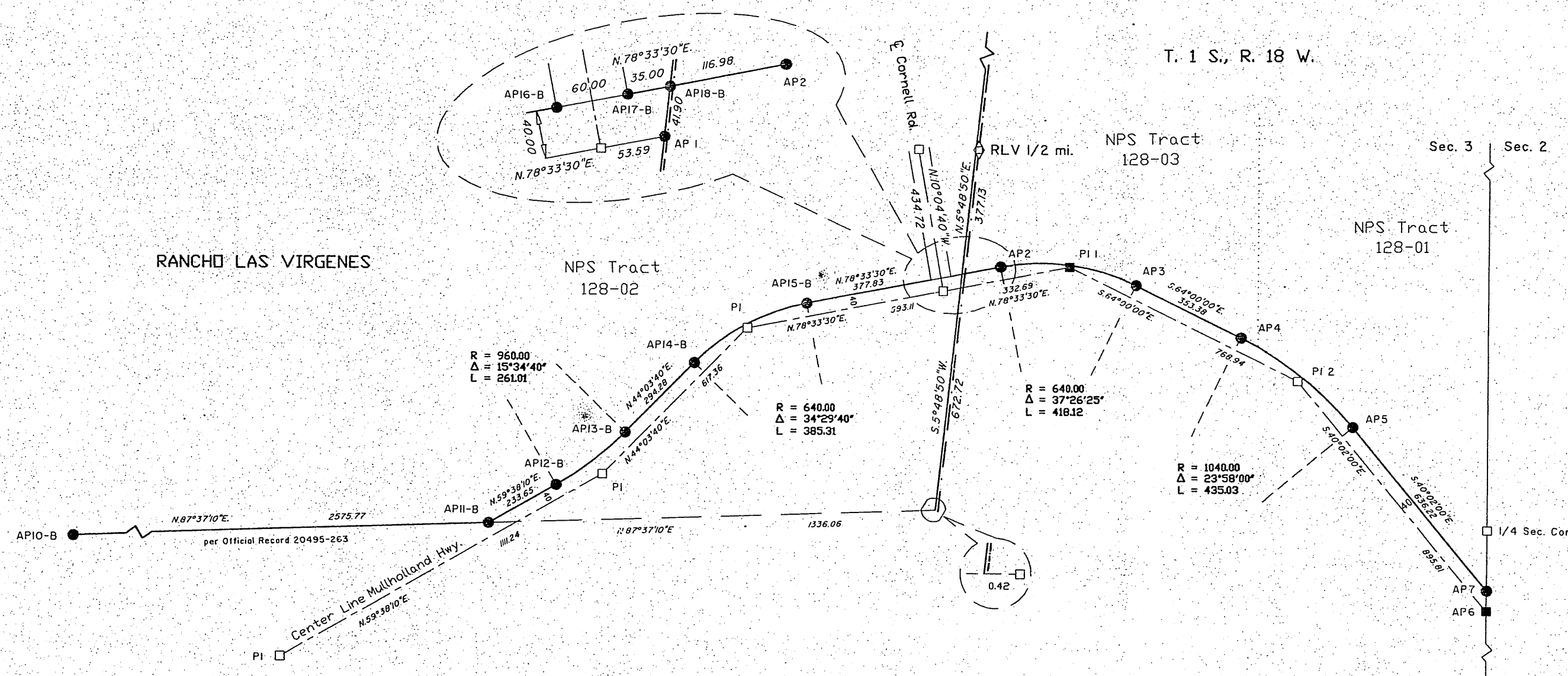
ORIGINAL

SHEET 2 OF 2 SHEETS

# TOWNSHIPS 1 NORTH AND 1 SOUTH, RANGE 18 WEST, OF THE SAN BERNARDINO MERIDIAN, CALIFORNIA.

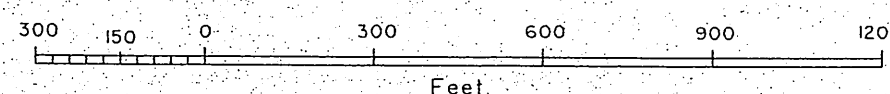
## DEPENDENT RESURVEY AND METES-AND-BOUNDS SURVEY

Reference should be made to Sheet No. 1 for survey information.



### LEGEND

- ◊ Original Position Perpetuated by Testimonial Evidence; Not Remonumented
- Local Evidence Recovered; Not Remonumented
- Local Evidence Recovered; Remonumented
- Position Determined and Monumented



UNITED STATES DEPARTMENT OF THE INTERIOR  
BUREAU OF LAND MANAGEMENT  
Sacramento, California

This plat, having been correctly prepared in accordance with the requirements of law and this Bureau, is hereby accepted.

For the Director

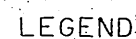
*James B. McCarthy* ACTING  
October 29, 2003  
Chief Cadastral Surveyor-California







## DEPENDENT RESURVEY AND METES-AND-BOUNDS SURVEY

This plat represents the dependent resurvey of a portion of the San Bernardino Baseline, a portion of the subdivisional lines, a portion of Rancho Las Virgenes, and a metes-and-bounds survey of National Park Service Tracts 128-01, 128-02, and 128-03, of the Santa Monica Mountains National Recreation Area, designed to restore the corners in their true original locations according to the best available evidence, Townships 1 North and 1 South, Range 18 West, San Bernardino Meridian, California.

Survey was executed by David H. Haller and Richard L. Houston, Cadastral Surveyors, beginning January 7, 1991 and completed November 15, 2001, pursuant to Special Instructions dated September 17, 1990, for Group No. 1093, and Assignment Instructions dated July 18, 2002, California.



-  Original perpetration by testimonial evidence; Not remonumented  
 Local Evidence Recovered; Not Remonumented  
 Local Evidence Recovered; Remonumented  
 Position Determined and Monumented

UNITED STATES DEPARTMENT OF THE INTERIOR  
BUREAU OF LAND MANAGEMENT  
Sacramento, California

This plat, having been correctly prepared in accordance with the requirements of law and this Bureau, is hereby accepted.

For the Director

James B. McCarth ACTING  
October 29, 2003  
Chief Cadastral Surveyor-California



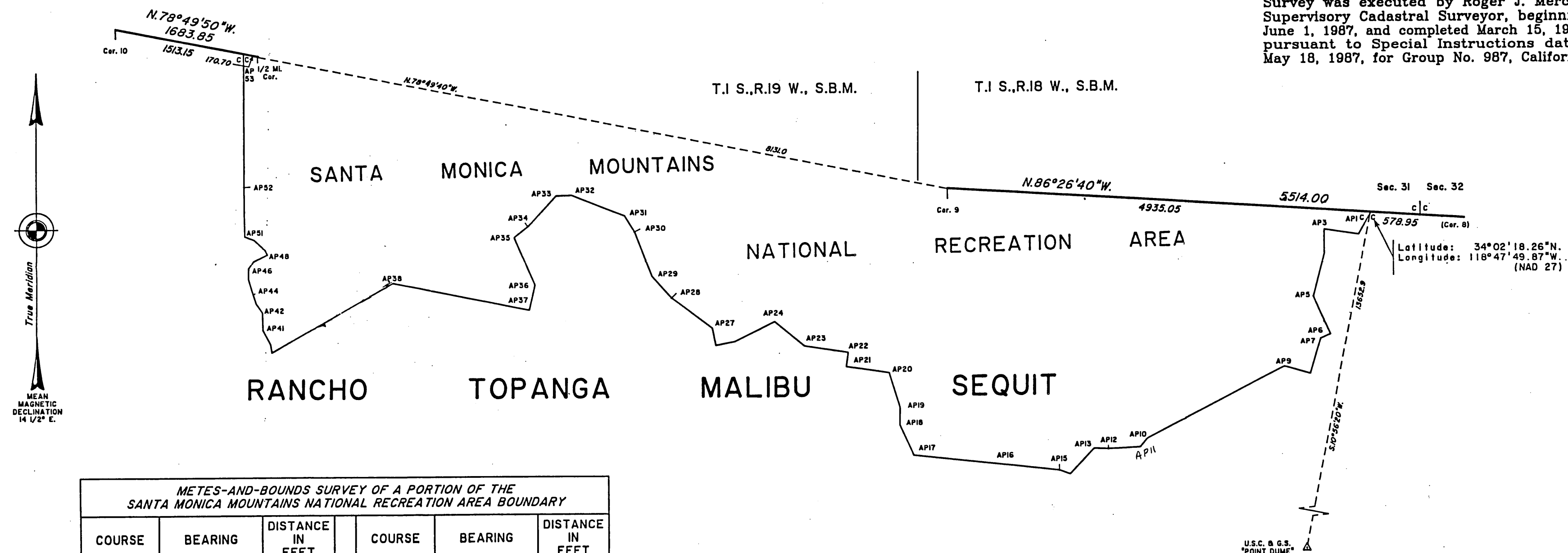
## TOWNSHIP 1 SOUTH, RANGES 18 &amp; 19 WEST, OF THE SAN BERNARDINO MERIDIAN, CALIFORNIA.

## DEPENDENT RESURVEY AND METES-AND-BOUNDS SURVEY

A history of surveys is contained in the field notes.

This plat represents the dependent resurvey of portions of Rancho Topanga Malibu Sequit, designed to restore the corners in their true original locations according to the best available evidence, and the metes-and-bounds survey of a portion of the Santa Monica Mountains National Recreation Area Boundary, Townships 1 South, Ranges 18 and 19 West, San Bernardino Meridian, California.

Survey was executed by Roger J. Mercer, Supervisory Cadastral Surveyor, beginning June 1, 1987, and completed March 15, 1989, pursuant to Special Instructions dated May 18, 1987, for Group No. 987, California.



METES-AND-BOUNDS SURVEY OF A PORTION OF THE  
SANTA MONICA MOUNTAINS NATIONAL RECREATION AREA BOUNDARY

COURSE	BEARING	DISTANCE IN FEET	COURSE	BEARING	DISTANCE IN FEET
AP1-AP2	S. 29° 15' 50" W.	295.90	AP27-AP28	N. 52° 50' 10" W.	586.70
AP2-AP3	N. 81° 28' 40" W.	402.65	AP28-AP29	N. 41° 38' 20" W.	338.70
AP3-AP4	S. 0° 34' 00" E.	275.70	AP29-AP30	N. 21° 06' 40" W.	559.00
AP4-AP5	S. 14° 41' 40" W.	526.60	AP30-AP31	N. 31° 15' 00" W.	218.10
AP5-AP6	S. 24° 36' 50" E.	486.55	AP31-AP32	N. 68° 50' 50" W.	661.30
AP6-AP7	S. 65° 29' 50" W.	130.20	AP32-AP33	S. 88° 23' 20" W.	186.00
AP7-AP8	S. 17° 04' 40" W.	424.60	AP33-AP34	S. 42° 37' 40" W.	473.35
AP8-AP9	N. 73° 58' 20" W.	306.85	AP34-AP35	S. 51° 27' 20" W.	215.15
AP9-AP10	S. 62° 44' 40" W.	1807.75	AP35-AP36	S. 23° 33' 30" E.	602.65
AP10-AP11	S. 39° 09' 30" W.	131.30	AP36-AP37	S. 13° 22' 10" W.	303.00
AP11-AP12	S. 87° 08' 40" W.	363.00	AP37-AP38	N. 78° 33' 10" W.	1611.72
AP12-AP13	N. 87° 17' 20" W.	171.60	AP38-AP39	S. 60° 25' 40" W.	1616.54
AP13-AP14	S. 43° 13' 50" W.	406.20	AP39-AP40	N. 9° 31' 10" W.	95.90
AP14-AP15	N. 68° 57' 10" W.	128.45	AP40-AP41	N. 28° 10' 10" W.	187.10
AP15-AP16	N. 83° 35' 00" W.	653.20	AP41-AP42	N. 0° 23' 40" W.	202.30
AP16-AP17	N. 83° 40' 00" W.	1057.45	AP42-AP43	N. 35° 16' 50" W.	125.20
AP17-AP18	N. 24° 18' 30" W.	392.65	AP43-AP44	N. 17° 33' 50" W.	120.45
AP18-AP19	N. 1° 47' 10" E.	200.70	AP44-AP45	N. 17° 03' 00" W.	184.85
AP19-AP20	N. 17° 33' 00" W.	425.80	AP45-AP46	N. 2° 02' 40" E.	122.70
AP20-AP21	N. 81° 24' 00" W.	500.00	AP46-AP47	N. 37° 12' 50" E.	101.05
AP21-AP22	N. 8° 40' 10" E.	164.10	AP47-AP48	N. 63° 07' 20" E.	175.70
AP22-AP23	N. 81° 19' 50" W.	510.25	AP48-AP49	N. 26° 08' 40" W.	59.65
AP23-AP24	N. 49° 48' 50" W.	448.10	AP49-AP50	N. 46° 42' 00" W.	173.70
AP24-AP25	S. 63° 04' 50" W.	510.20	AP50-AP51	N. 68° 42' 20" W.	118.20
AP25-AP26	S. 79° 06' 30" W.	226.05	AP51-AP52	N. 0° 34' 20" W.	576.60
AP26-AP27	N. 10° 43' 30" W.	205.50	AP52-AP53	N. 0° 07' 40" E.	1549.90



UNITED STATES DEPARTMENT OF THE INTERIOR  
BUREAU OF LAND MANAGEMENT  
Sacramento, California

This plat is strictly conformable to the approved field notes, and the survey, having been correctly executed in accordance with the requirements of law and the regulations of this Bureau, is hereby accepted.

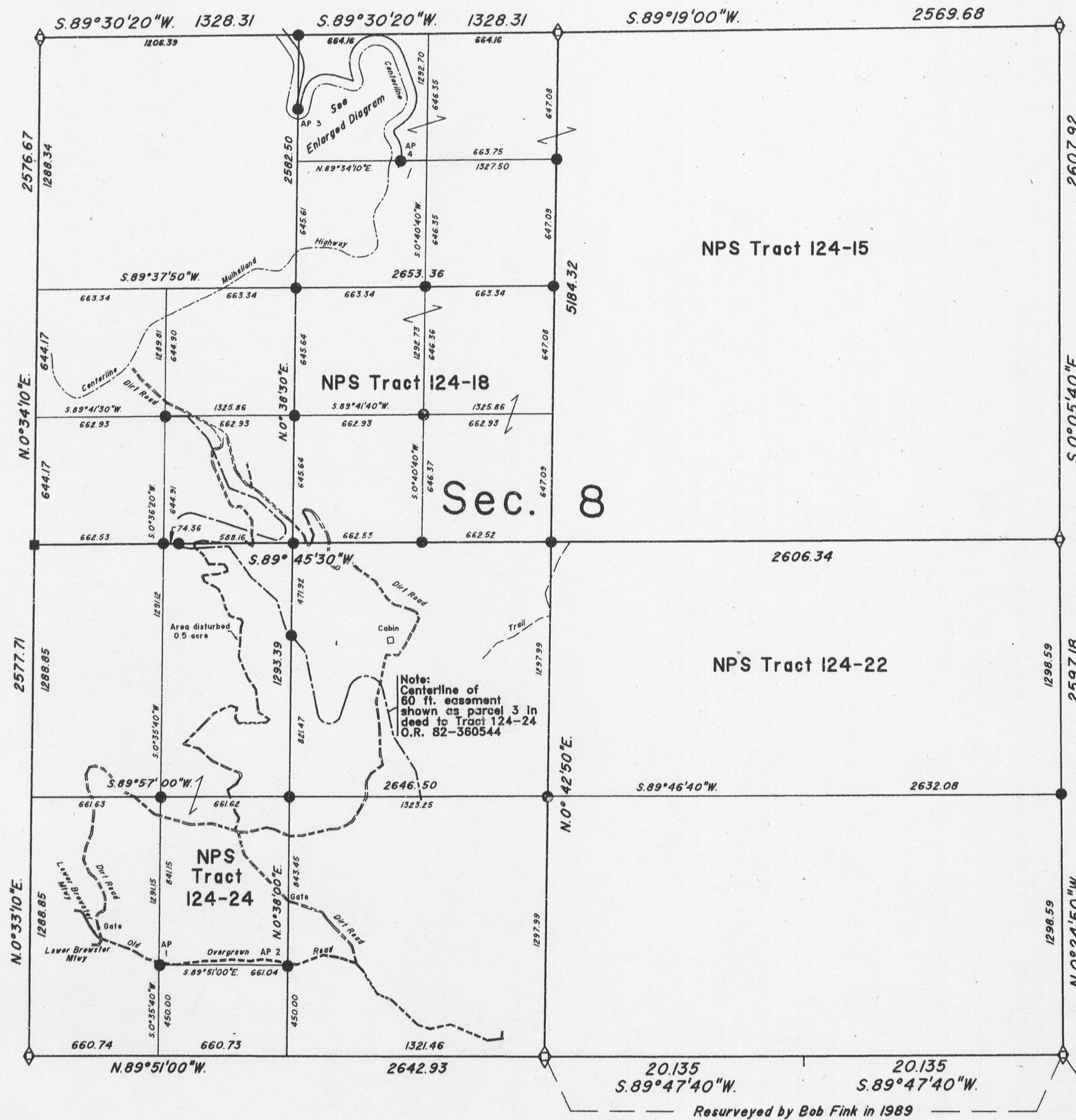
For the Director

*Ronald E. Sullivan Jr.* October 5, 1989  
Acting Chief Cadastral Surveyor—California



TOWNSHIP 1 SOUTH, RANGE 18 WEST, OF THE SAN BERNARDINO MERIDIAN, CALIFORNIA.

DEPENDENT RESURVEY, SUBDIVISION, AND METES-AND-BOUNDS SURVEY



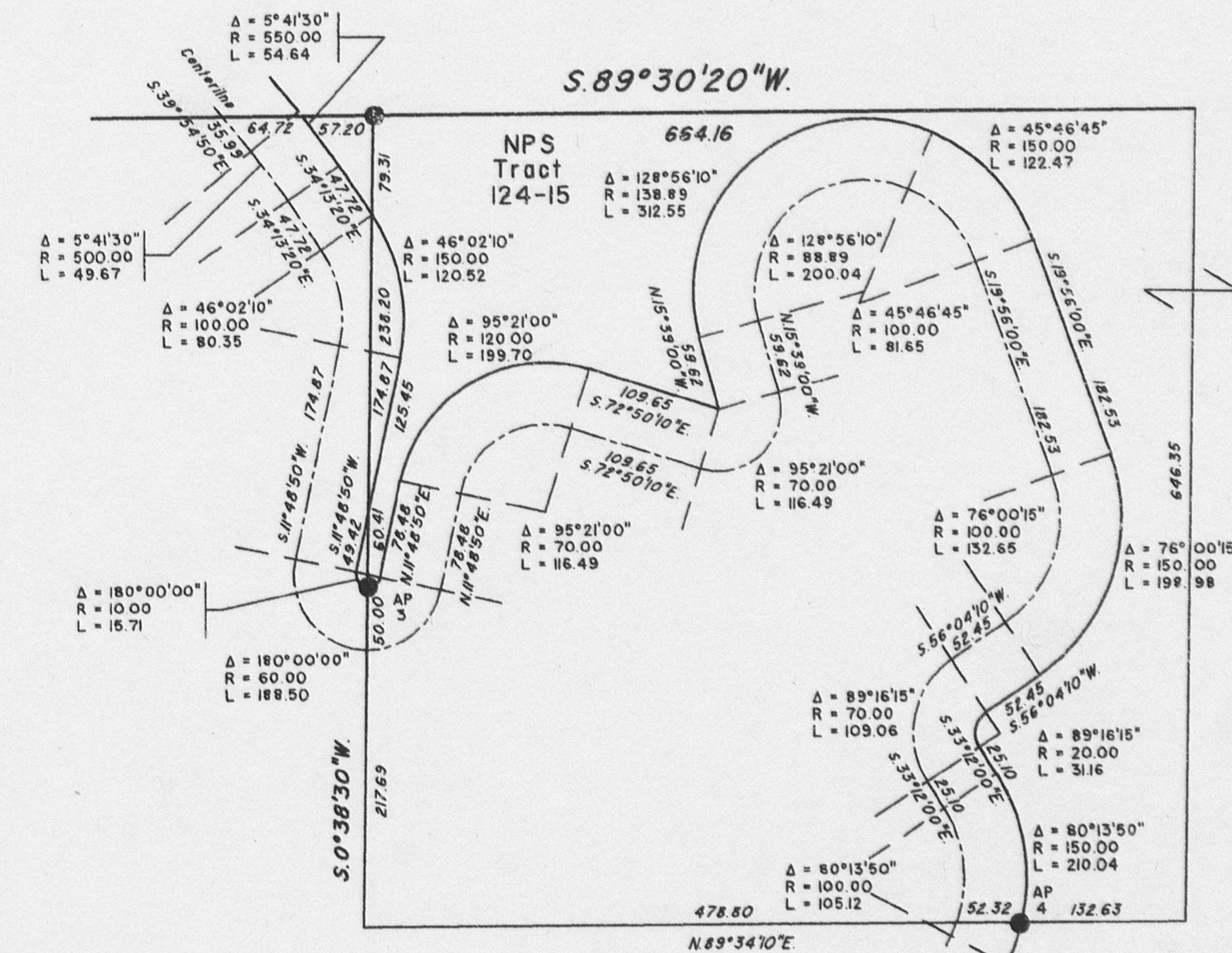
A history of surveys is contained in the field notes.

This plat represents the dependent resurvey of a portion of the subdivisional lines, designed to restore the corners in their true original locations according to the best available evidence, the subdivision of section 8, and the metes-and-bounds survey of certain National Park Service boundaries, being a portion of the Santa Monica Mountains Nation Recreation Area in Township 1 South, Range 18 West, San Bernardino Meridian, California.

Lottings and areas are as shown on the  
 Township plat approved June 14, 1898.

Survey was executed by Richard L. Houston, Cadastral Surveyor, beginning July 15, 2003 and completed September 24, 2003, pursuant to Special Instructions dated July 15, 2003, for Group No. 1443, California.

### ENLARGED DIAGRAM



No Scale

CERTIFICATE OF DUPLICATE ORIGINAL PLAT  
I CERTIFY this to be a true duplicate copy of the original plat.

DEC 15 2009 *David Conklin*  
(Date) (Survey Records Unit)

UNITED STATES DEPARTMENT OF THE INTERIOR  
BUREAU OF LAND MANAGEMENT  
Sacramento, California

This plat, having been correctly prepared in accordance with the requirements of law and this Bureau, is hereby accepted.



For the Director

Bill D. Ming (ACTING)

DECEMBER 31, 2003

Chief Cadastral Surveyor—California

### LEGEND

-  Original Position Perpetuated by Testimonial Evidence: Not Remonumented  
 Local Evidence Recovered: Remonumented  
 Position Determined and Monumented

*D. a. d.*  
*r/h*