



*San Bernardino Meridian.*

Notes on Angelus National Forest Boundary - CS 9382  
Field Notes S. line Sec 13 -- C.S. 9144  
C.S. 9228 - lines in Sec. 6 & 7 also C.S. 9258  
East line Sec. 25 and 36 - C.S. 9384

Secs. 1 to 18 inclusive in San Gabriel  
Forest Reserve.

All north of this line in San Gabriel Forest Reserve

Aggregate Area of Public Land surveyed by Hancock Wheeler

Estimated . . . . . Lot. N<sup>o</sup> 76 - unsurveyed Mt. Island  
Aggregate

Line Col. yellow not changed in Wheeler's account

Variation on Section lines run by Hancock - 14°  
" " " " " " Wheeler - 15°

| Surveys Designated                                | By Whom Surveyed | Date of Contract                 | Am't of Surveys                    | When Surveyed              |
|---|------------------|----------------------------------|------------------------------------|----------------------------|
| South Boundary of S.P.                            | H. Washington    | Oct. 4 <sup>th</sup> 1858        |                                    | 1852                       |
| Part of West boundary Col. green                  | H. B. Gray       | 7 <sup>th</sup> "                |                                    | "                          |
| Sealines colored blue                             | H. Hancock       | March 7 <sup>th</sup> 1858       |                                    | "                          |
| Boundaries of original grant                      | "                | Inst. Sept. 3 <sup>rd</sup> 1858 |                                    | 1865                       |
| Boundaries of East 1/2 37 <sup>th</sup> Col. red. | M. G. Wheeler.   | Inst. Sept. 11. 1874             |                                    | 1858                       |
| Part of East boundary Col. brown                  | "                | Sept. 4 <sup>th</sup> "          | 1 m <sup>2</sup> 000 lbs 00 / 18s. | 1874                       |
| Section lines colored. "                          | "                | "                                | 4. 16. " 40. "                     | Oct. 9 <sup>th</sup> 1874. |

Aggregate Area of Public Land Surveyed by Hancock. 5432.76 Acres.

" " " " " " Wheeler. 1311.55 "

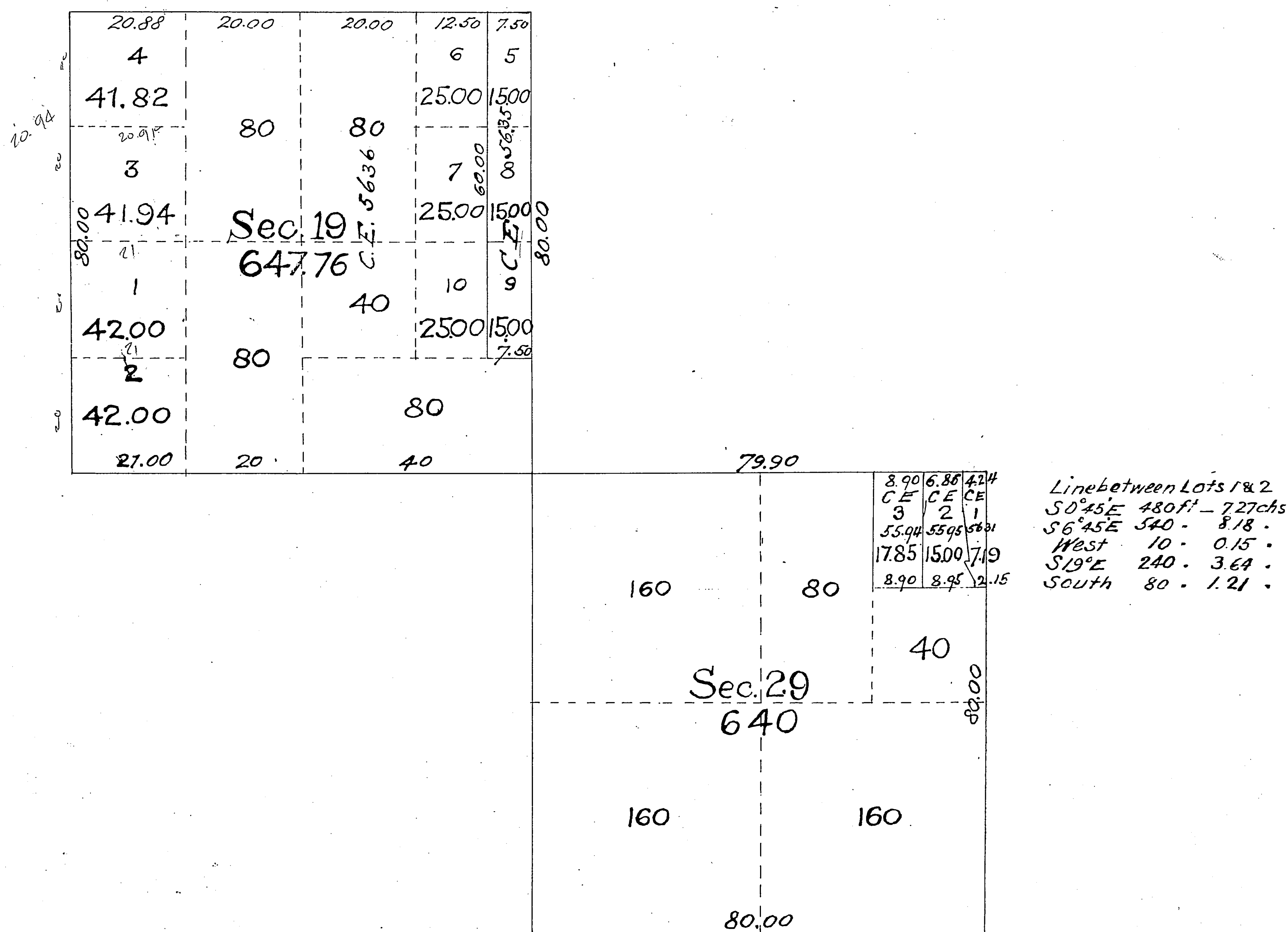
" " " " " " 674431 "

Estimated " Lot N<sup>o</sup> 37 and Unsurveyed Mt. Land. 16 295.69 "

Aggregate 23,040.00

*Supplemental Plat of Sections 19 and 29 in  
Township N<sup>o</sup> 1 North, Range N<sup>o</sup> 9 West S.B.M. Cal.*

T 1 N  
R 9 W  
(2)



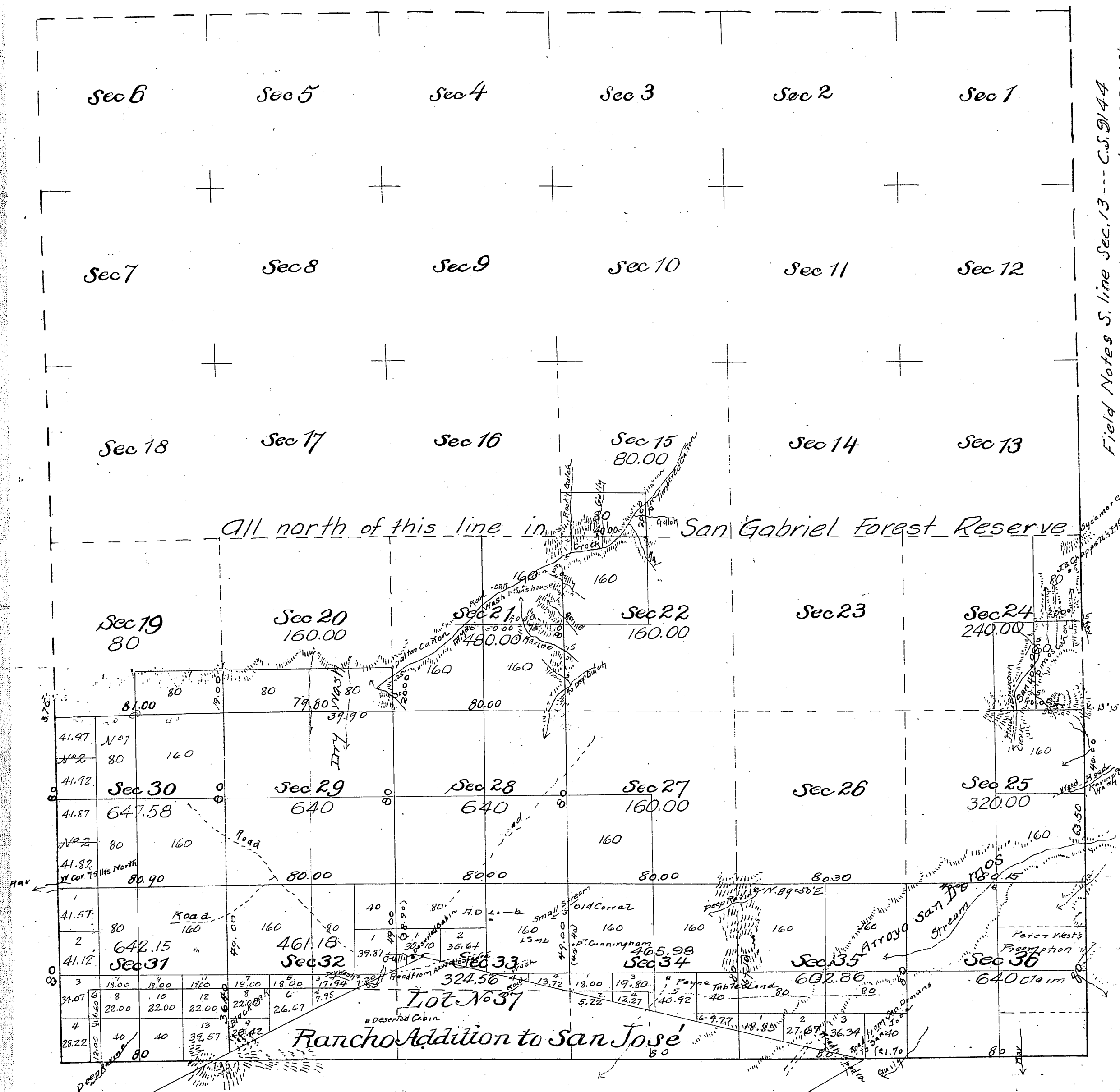
Received and filed in U.S. Land Office  
Los Angeles Cal.

Scale 20 chs 1 inch October 9, 1900

The above supplemental plat of Sections 19 and 29 of Township N<sup>o</sup> 1 North Range N<sup>o</sup> 9 West San Bernardino Meridian California correctly shows the areas as amended in conformity to the field notes of survey and to instructions from the General Land Office regarding irregular boundaries of fractl. Lots contained in letter E dated July 21, 1900  
U.S. Surveyor General's Office  
San Francisco California  
August 23<sup>d</sup> 1900

*J. M. Gleaves*  
U.S. Surv. Gen'l, Cal.

Field Notes S. line Sec. 13 --- C.S. 9144  
Notes on Angelus Forest Boundary line - C.S. 9382  
East line Sec. 25 and 36 - C.S. 9384



Dec 1, 2, 3, 4, 5, 6, 7, 8, 9, 10, 11, 12, 13, 14, 15, 16, 17, 18, 19  
Sangabrey Reserve.

|  |               |
|--|---------------|
| Aggregate Area of Public Lands surveyed by Hancock | 3432.76 acres |
| " " " " " Wheeler                                  | 1371.55 "     |
| " " " " " "  | 6.74731 "     |
| Lot 1734 unsurveyed by L and                       | 16295.69 "    |
| Aggregate  | 23040.00 "    |

Time Col. yellow match charged in Wheeler's account.

Variation on section lines run by Hancock =  $14^{\circ}$  E  
" Wheeler =  $13\frac{1}{2}^{\circ}$  E

| Surveys Designated.                         | By whom surveyed. | Date of Contract.                           | Amount of Surveys.                    | When surveyed.            |
|---|-------------------|---|---------------------------------------|---------------------------|
| South Boundary of Tp                        | H. Washington     | Oct. 4 <sup>th</sup> 1852                   |                                       | 1852                      |
| Part of East boundary Col. green            | J. B. Gray        | " 7 <sup>th</sup> "                         |                                       |                           |
| See also in lines colored blue              | H. Hancock        | March 2 <sup>th</sup> 1865                  |                                       | 1865                      |
| Boundaries of N. & S. Col. yellow           | " "               | In 3 <sup>rd</sup> Oct 7 <sup>th</sup> 1858 |                                       | 1858                      |
| Boundary of Oct 10 3 <sup>rd</sup> Col. red | M. G. Pfeiffer    | Inst. Sep 11 <sup>th</sup> 1874             |                                       | 1874                      |
| Part of East boundary Col. brown            |                   | Sept. 4 <sup>th</sup> "                     | 1 m. north oak Is                     |                           |
| Section, line colored "                     |                   | " "   | 4 <sup>th</sup> 16 <sup>th</sup> 40 " | Oct. 9 <sup>th</sup> 1874 |



# Township N°1 North, Range N°9 West, San Bernardino Meridian.

T1N  
R9W

4

Amended Plat.



Sec. 1, 2, 3, 4, 5, 6, 7, 8, 9, 10, 11, 12, 13, 14, 15, 16, 17, 18, in San Jose Forest Reserve.

Public Land returned on map approved December 29th 1882 7753.32 Acres

Surveyed by Pearson 14496.48

Appropriate Area of Ranch and surveyed

Estimated " Private Grant

22498.80

821.84

23071.64

C.S. 9062

| Surveys Designated                      | By whom surveyed                             | Date of Contract   | Amount of Surveys  | When surveyed   | Mean Declination |
|---|--|--------------------|--------------------|-----------------|------------------|
| Zones previously surveyed colored black | exhibited on Map approved December 29th 1882 |                    |                    |                 |                  |
| Part of East 1/2 of 2nd not colored     | G. W. Pearson                                | December 10th 1882 | 3 mls Ochs. 11 mls | 1884            | 14° 27' East     |
| North                                   |  |                    | 4 43 21            |                 |                  |
| West                                    |  |                    | 1 20 0             |                 |                  |
| Township lines colored blue resurveyed  |  |                    | 2 17 30            |                 |                  |
| Section lines not colored               |  |                    | 39 45 58           |                 |                  |
| colored blue resurveyed                 |  |                    | 6 39 51            | March 29th 1884 |                  |

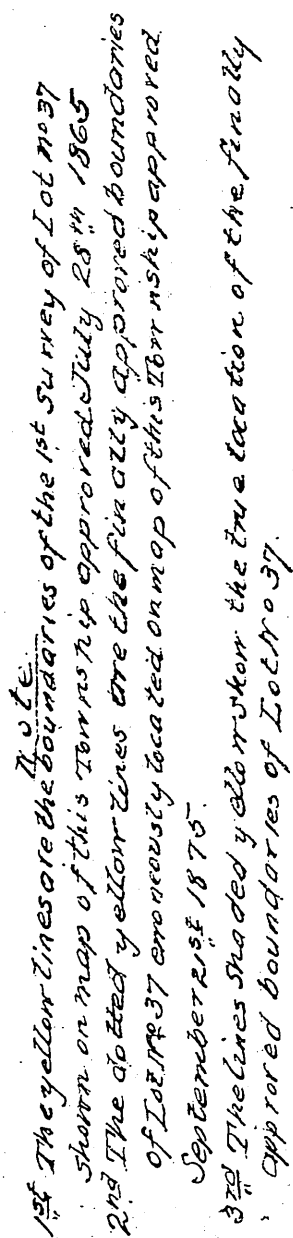
For field notes Re. Add. to San Jose M 27-161  
 " " " Sec. 13, 24, 25 + 36 C.S. 9040  
 " " " Sec. 31, 32, Sta. 3 to 4 of R. line C.S. 9064  
 " " " Sec. 5, 6 " C.S. 9064  
 " " " S. line Sec. 13, see C.S. 9144  
 Interior & Sec. lines C.S. 9242

Note:  
 1st The yellow lines are the boundaries of the 1st survey of Lot N°37 shown on Map of this Township approved July 28th 1865.  
 2nd The dotted yellow lines are the finally approved boundaries of Lot N°37 erroneously located on Map of this Township approved September 21st 1875.  
 3rd The lines shaded yellow show the true location of the finally approved boundaries of Lot N°37.

Notes on Angelus National Forest Boundary line C.S. 9382 N. Bdy. and por. W. Bdy. of Twp. C.S. 9421



TIN  
R9W  
⑤



| Surreys Designated   | By whom Surveyed  | Date of Contract                              | Amount of Surreys | When Surveyed                 | Year Declined   |
|--|---|---|-------------------|-------------------------------|-----------------|
| Top sec and legal subdivision lines shaded black, and edges of R <sup>d</sup> addition to San Jose | { Exhibited on Map of this Territory approved September 2 <sup>d</sup> 1875 |   |                   |                               |                 |
| Top Sec and legal subdivision lines shaded blue  | W. H. Norway  | July 31 <sup>st</sup> 1875                    |                   | 1875                          | 14° 15' East    |
| N. W. and N. E. 1/4 of R <sup>d</sup> 1000' to San Jose result                                     | W. H. Minto   | 17 <sup>th</sup> 1882<br>Instructions October | Stms. 4744s 3544s | 1882                          | } 14° 18' East. |
| Connecting lines shaded brown  | " "   | " "   | 2 " 34 " 18 "     | October 21 <sup>st</sup> 1882 |                 |

TOWNSHIP N<sup>o</sup> 1 NORTH RANGE N<sup>o</sup> 9 WEST SAN BERNARDINO MERIDIAN CALIFORNIA  
DEPENDENT RESURVEY

T 1 N  
R 9 W

RECEIVED

6

MAR 21 1941

District Land Office  
Los Angeles Calif

Filed in U. S. Land Office  
Los Angeles, Cal.

APR 18 1941

*Paul Blumenthal*  
Register.

For Field Notes of N/2 this  
Twp see CS 9426

S<sub>2</sub> of the SE<sub>4</sub> of Sec. 15-LA Co. F.C.D.  
E: 65-38, O.R. 21064-333

This plat of the resurvey of part of T. 1 N., R. 9 W., delineates a retracement and reestablishment of the lines of the original survey as shown upon the plats approved Dec. 29, 1882, and Sept. 15, 1884, in their true original position according to the best available evidence of the position of the original corners; all differences between the measurements shown on the original plats and those derived in the retracement have been distributed proportionally between accepted corners in accordance with surveying rules; reference will be made to the original plats for the showing of the areas.

Lat 34° 06' N.  
Long 117° 46' W.

UNITED STATES  
DEPARTMENT OF THE INTERIOR  
GENERAL LAND OFFICE

Washington, D.C., Mar. 20, 1940

The survey represented by this plat having been correctly executed in accordance with the requirements of law and the regulations of this office is hereby accepted

*A. E. Donohue*  
Acting Assistant Commissioner

Office of Supervisor of Surveys.

Denver, Colorado, Feb. 23, 1940

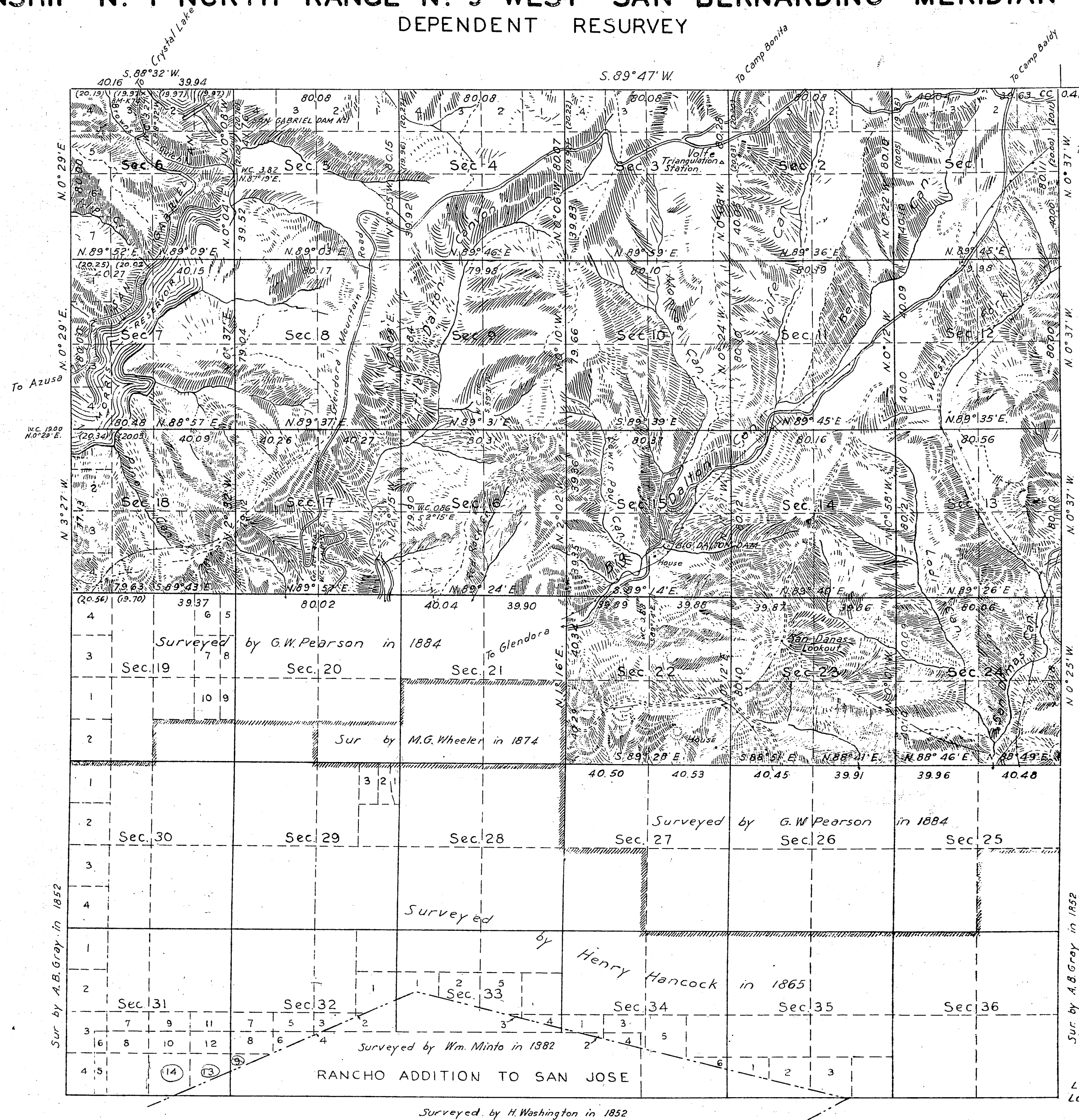
The above plat of Township No. 1 North, Range No. 9 West, San Bernardino Meridian, California, is strictly conformable to the field notes of the survey thereof which have been examined and approved.

*Frank Johnson*  
Supervisor of Surveys

Area Resurveyed 13,452.12 Acres.

Scale: 40 Chains to an Inch.

| LINES DESIGNATED | BY WHOM SURVEYED                                | No. | GROUP DATE    | MILEAGE MLS. | CHS   | WHEN SURVEYED BEGUN | COMPLETED   |
|------------------|---|-----|---------------|--------------|-------|---------------------|-------------|
| Exterior         | J. L. Warboys,<br>F. W. Forrest &<br>R. E. Moss | 314 | Aug. 11, 1937 | 12           | 76.92 | Dec. 9, 1937        | May 5, 1938 |
| Subdivisional    | "   | "   | "             | 39           | 3.92  | "                   | "           |



True Meridian