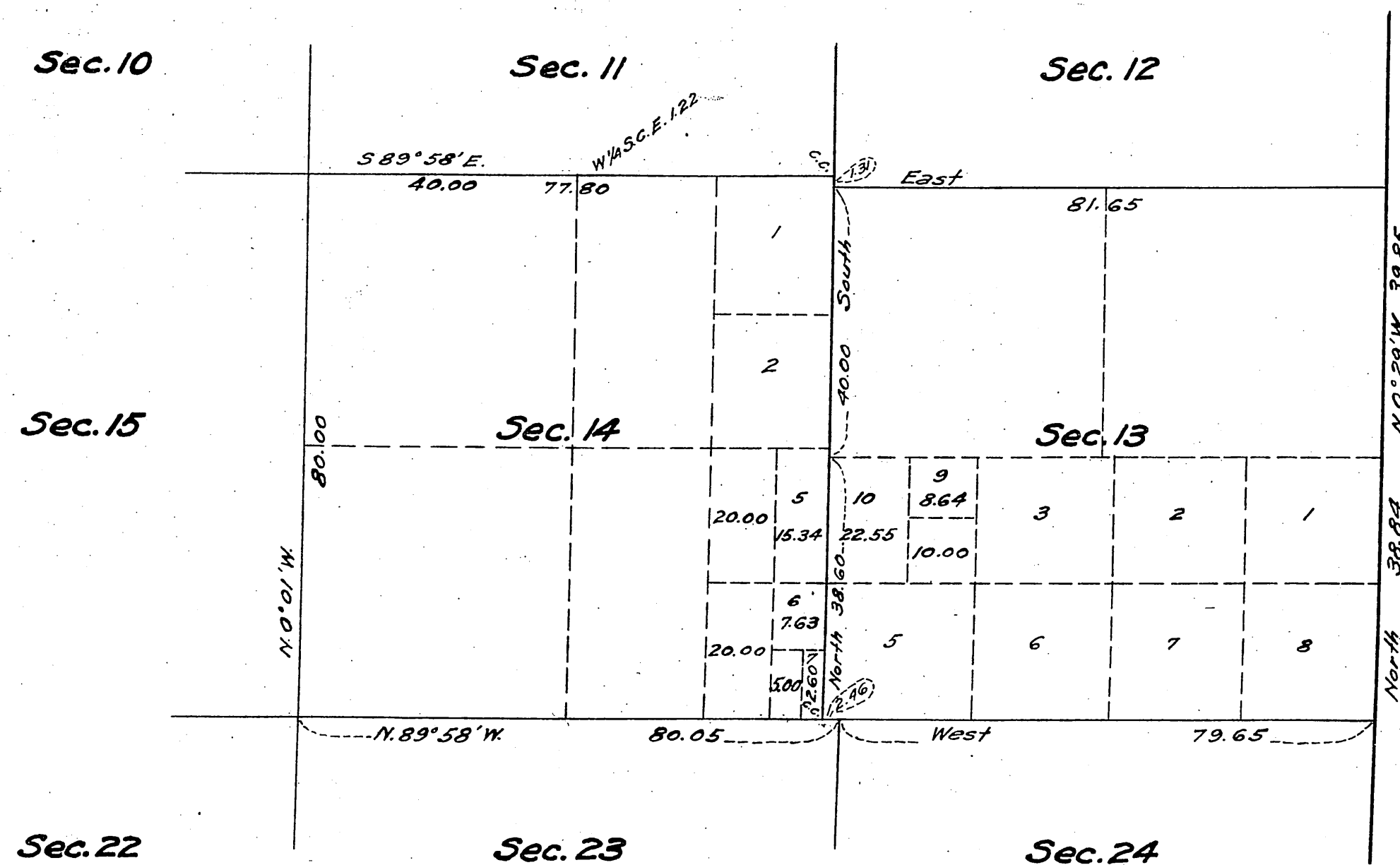


Supplemental Plat of Sections 13 and 14,
Township N^o 6 North, Range N^o 14 West,
San Bernardino Meridian,
California.

Scale: 20 chains = 1 inch.



Los Angeles 016949, "E" C.G.T., December 28, 1916.

Filed in U. S. Land Office,
Los Angeles, Cal.
JAN. 29, 1917.

John D. Roche
Register.

This supplemental plat showing the subdivision of Lot 4, Section 13, and
Lots 3 and 4, of Section 14, T. 6 N., R. 14 W., San Bernardino Meridian, California,
plat approved August 29, 1902, is made for the purpose of obtaining the
area and legal description of the subdivisions thereof, to accommodate
Homestead Entry, Los Angeles 016949 part of which embraces portions of
the above Lots of said Sections, and is hereby approved.

U. S. Surveyor-General's Office,
San Francisco, California,
January 6, 1917.

Frederick W. Gould
U. S. Surveyor-General
for California.

Township N° VI North

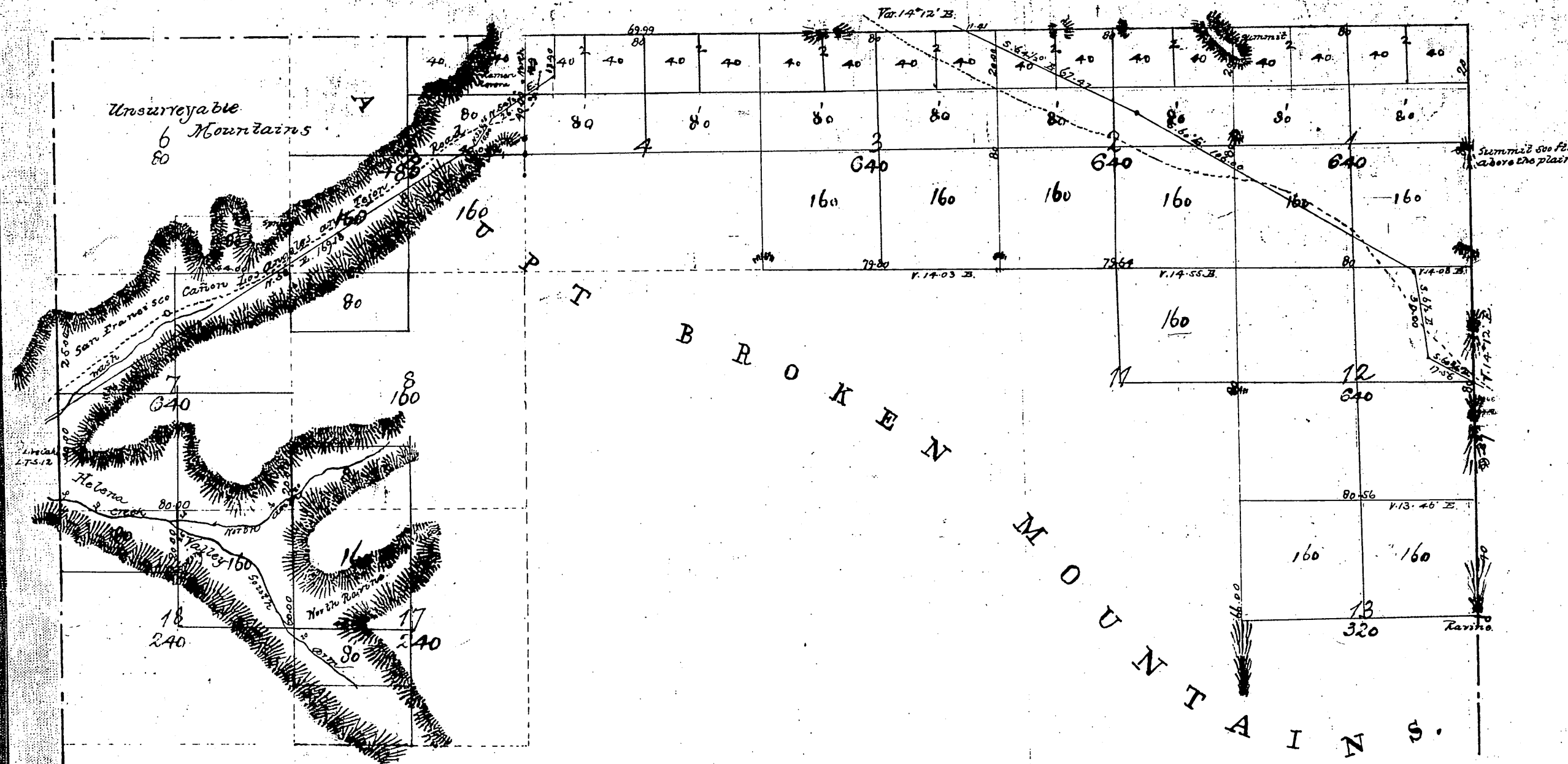
Range N° XIV West

of the

San Bernardino Meridian.

T6N
R14W

(2)



Aggregate Area of Public Lands Surveyed 3280.00 acres
Estimated " " Mountains " Un-Surveyed 19760.00 "
Aggregate 23,040.00 "

Meridian's Variation of 14° 12' E.

Surveys Designated	By Whom Surveyed	Date of Contract	Amount of Surveys	When Surveyed
Traverse Lines	Ralph W. Norris	October 12 th 1853	5 40 11	1853
Township	"	December 23 rd 1854	5 47 00	1855
Section	"	"	9 20 00	"

Note: Sections 5, 6, 7, 8, 17, 18, surveyed subsequently, and is attached to original map as an amendment.

The area of said sections is not included in Estimate given below.

For N. & E. Bdv. of T. 6 N., see C. S. 9170
For notes on Secs. 1, 2, 11, 12, 13, 14, 15, 16, 17, 18, see C. S. 9162

Lines colored blue run and paid for under former contract.

Signed:-

John C. Hays
Surv. Genl. Cal.

C. S. 9206 South line of Sec. 12 West 1/2 line of Sec. 1 & 12
also North line of Sec. 2, 3, 4, 5, 6, 7, 8, 9, 10, 11, 12, 13, 14, 15, 16, 17, 18

③

Supplemental Plot of Section 13
Range N^o 14 West, San Bernardino Meridian, California

$G \quad f \quad F \quad e \quad E \quad d \quad D \quad c \quad C \quad b \quad B \quad a \quad A$

Received
U. S. Land Office
Los Angeles, Cal.
Date Sept. 6/18
Hour 9 Am
B F Grover
Register

[illegible]

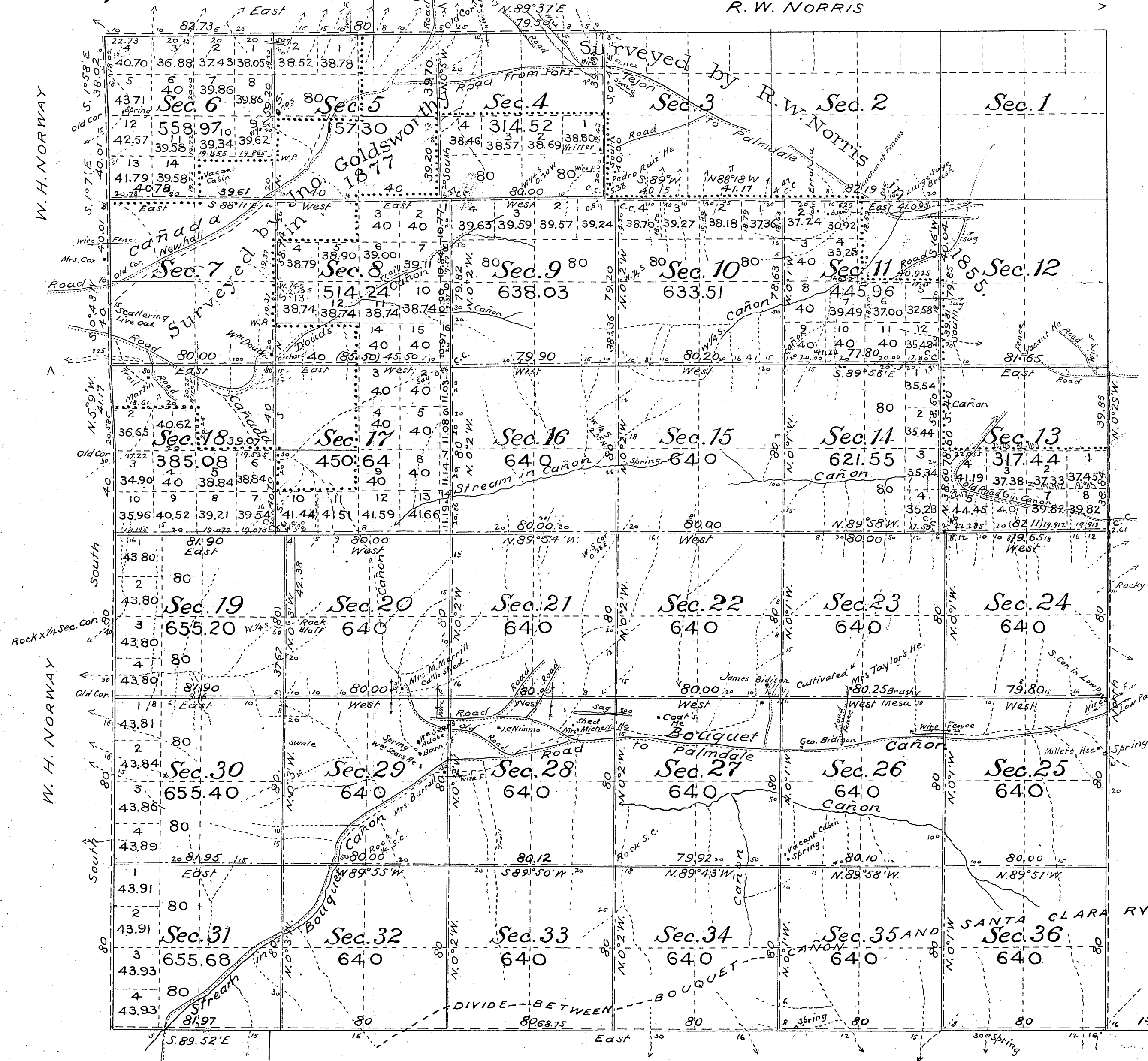
The above map of Township No. _____ Range No. _____ of the _____
Mendian _____ is strictly conformable to the field notes of the survey thereof on file
in this office, which have been examined and approved.
U. S. Surveyor General's Office.

Township N° 6 North, Range N° 14 West, San Bernardino Meridian, California.

R. W. NORRIS

T6N
R14W

(4)



except Secs 1 and 12
all of Township, within Pine Mountain and
Yaca Lake Forest Reserve, Proclamation
of President June 29, 1898.

July 25 '03
To be filed Aug. 25/03

Public Land previously surveyed	5,200.00 Acres
" surveyed by Geo. W. Pearson	17,883.52
Aggregate	23,083.52

Filed in U. S. Land office, Los
Angeles, Cal., Aug. 25, 1903.
R. W. Norris
Register

The line of demarcation between the areas previously counted in total
acreage surveyed and the new surveys, is indicated thus
Part of Interior lines C.S. 9201
Bdy. line of the San Gabriel National Forest - C.S. 9389
W. Bdy. of Twp. and S. line of Sec. 31 - C.S. 9398
W. " of Twp. and N. line of Sec. 4 - C.S. 9434.

Lat. 34° 40' N
Long. 118° 18' W
Mean Decl'n. 2° 36' E.
1ST STANDARD LINE NORTH

For N.E. Bdy. see C.S. 9120

Surveys Designated	By whom surveyed	Contract		Amount of Surveys			When surveyed
		No	Date	Mls.	chs.	Lks.	
Lines previously surveyed, exhibited on Map approved March 15, 1878.							
Part of North Boundary of Tp.	R. W. Norris		Dec. 23, 1854				1855
Part of North Bdy. of Tp	W. H. Norway		Aug. 25, 1884				1884
Part " West " " "	"		"				"
South Bdy. of Tp. Standard	"		Oct. 10, 1879				1879
Part of East Boundary of Tp	"		Aug. 25, 1884				1884
Part of North Bdy. of Tp. resurvd	George W. Pearson	173	April 8, 1901	3	02	23	1901
West Bdy. of Tp. re-survd.	"		"	5	79	21	"
Part of East Bdy. of Tp. re-survd	"		"	3	78	69	"
South Bdy. of Tp. Standard	"		"	6	01	97	"
Section Lines re-surveyed	"		"	10	22	88	"
New	"		"	26	03	31	Aug. 1, 1901
Connecting Lines	"		"		26	03	"

The above Map of Township N° 6 North, Range N° 14 West, San Bernardino Meridian,
California, is strictly conformable to the field notes of the surveys thereof on file in this
Office, which have been examined and approved.
U. S. Surveyor General's Office
San Francisco, California
August 29th 1903

W. L. Graham

U. S. Surveyor General for California

T. 6 N.
R. 14 W.

⑤

NOV 2 - 1939

Filed in U. S. Land Office.
Los Angeles, Cal.

NOV - 3 1939 - 9:00 a.m.

Register.



Scale: 10 chains to an inch.

The above supplemental plat of section 13, Township No. 6 North, Range No. 14 West, of the San Bernardino Meridian, California, based upon the plats approved August 29, 1902, January 6, 1917 and August 5, 1918, showing a subdivision of original lots 6, 7 and 8, to accommodate homestead entry Los Angeles 051948, prepared in accordance with instructions contained in the Commissioner's letter "E" dated September 28, 1919, is hereby approved.

Office Cadastral Engineer.

The amended lottings represented by this supplemental plat having been correctly made in accordance with the regulations of this office, the plat is hereby accepted.

Assistant Commissioner.

Traced by V.H.B. }
Checked by R.S.B. } 7-11-40

P.D.
bzo