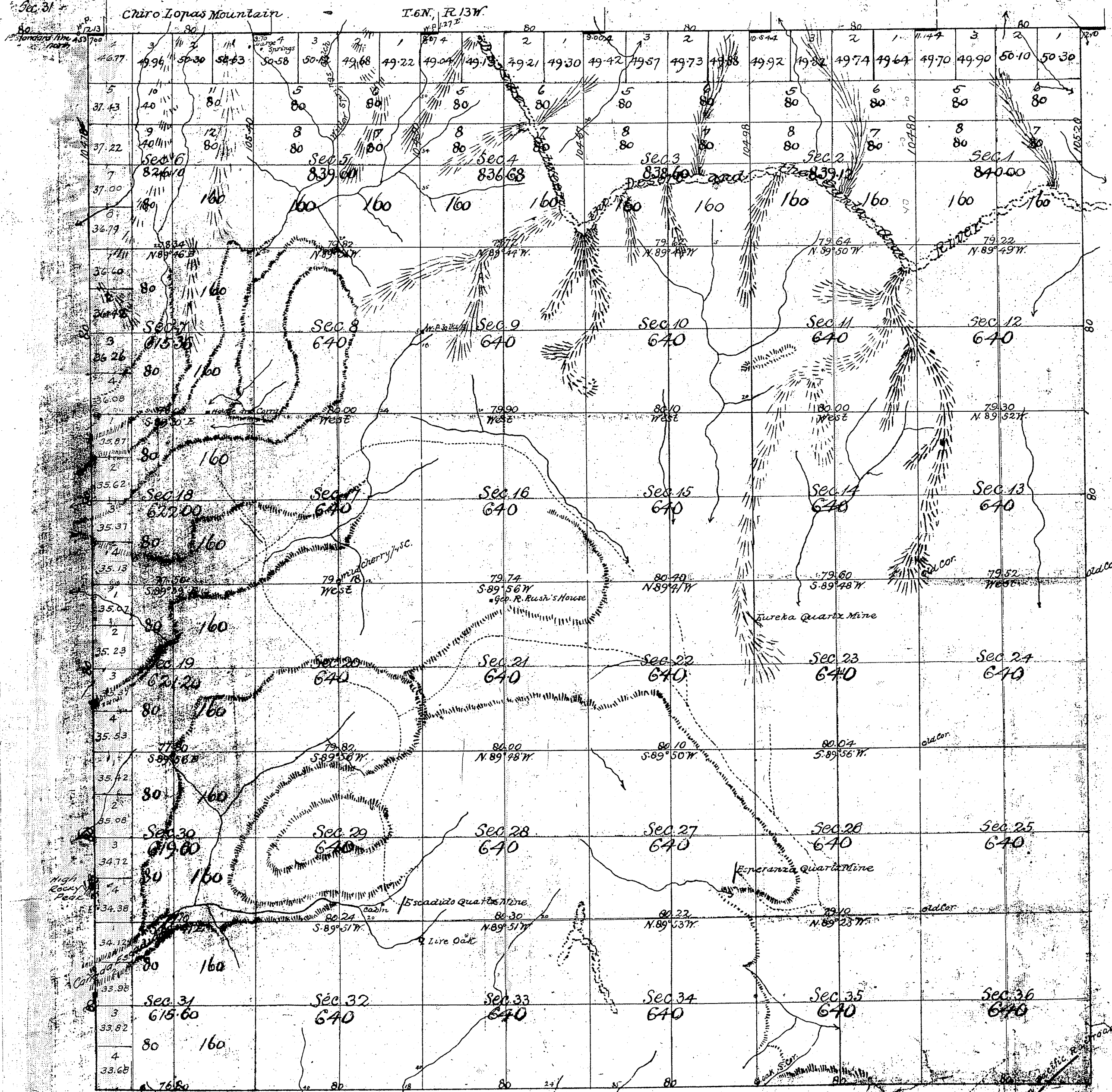


Township No 5 North, Range No 13 West, San Bernardino Meridian.

T5N  
R13W  
①



Used by Norway 14° 25' East.

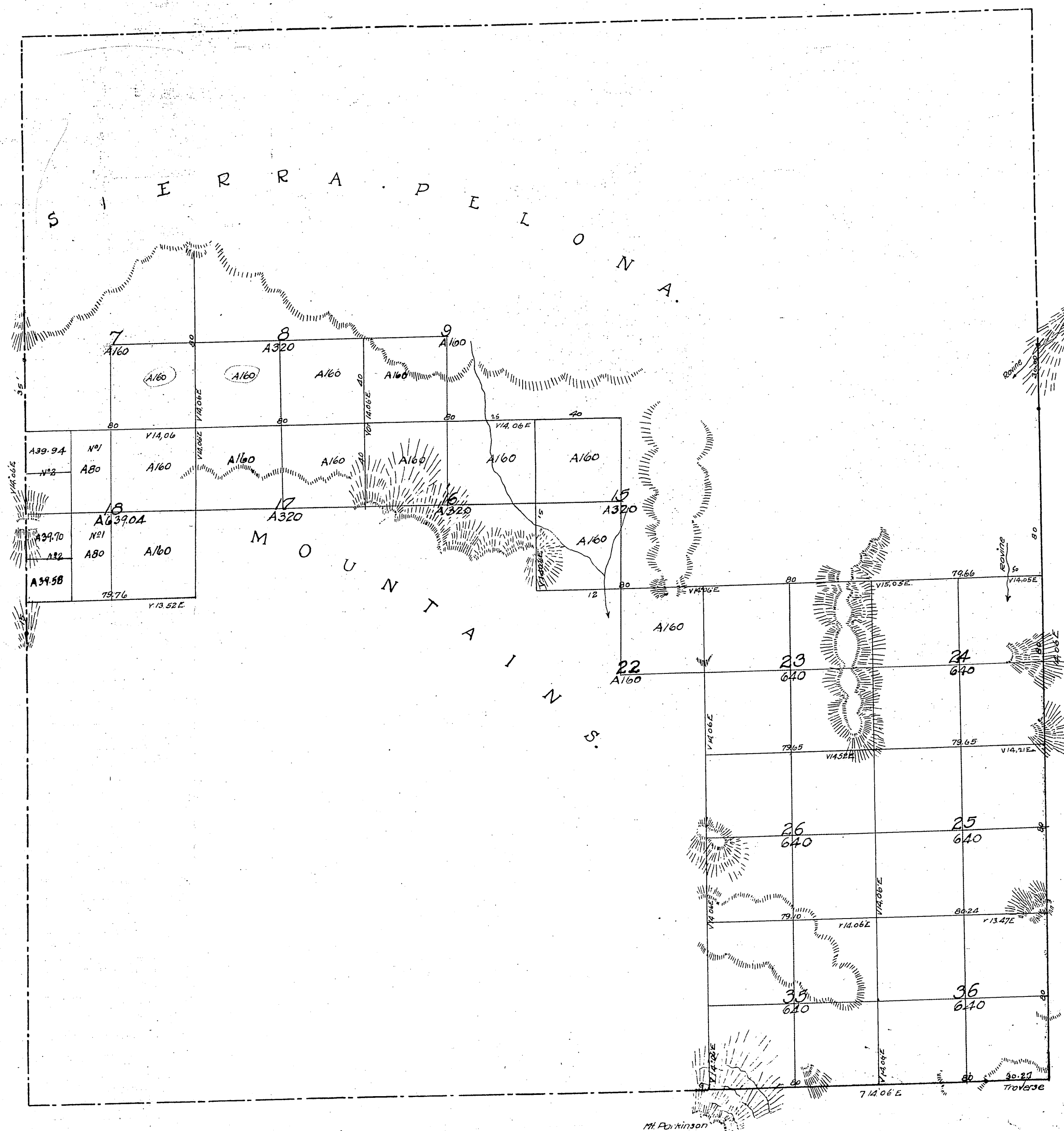
Area of Public Land surveyed by Hancock 6239.04 acres  
 Norway 17874.82 "  
 Aggregate 24113.86 "

Surveys Designated	By whom Surveyed	Date of Contract	Amount of Surveys Then Surveyed	
			1855 & 1856	1879
Lines colored red	Henry Hancock	February 15, 1855	5 mls. 75 chs. 50 fms.	1879
North Boundary of Township	W. H. Norway	October 10, 1879	14 - 40 - 75	1879
South Boundary of Township			1 - 00 - 00	1879
Section lines not colored these colored red only			54 - 30 - 05	1879
Section lines colored brown			1 - 70 - 30	1879
Connections			0 - 67 - 95	1879

Gov. Field Notes  
 C.S. 9036- All of S.B. of Twp.  
 C.S. 9096- E. & W. B's and Subdivisions

Signed  
 Thos. Wagner  
 Surveyor Gen. Cal.

Township N<sup>o</sup> V North Range N<sup>o</sup> XIII West San Bernardino Meridian.



Aggregate Area of Public Lands Surveyed 6233.04 Acres.  
Estimated " Mountains " not Surveyed 1809.68 "

Aggregate 24258.72

Township lines colored Brown run by H. Hancock in sectioning.

Surveys Designated.	By Whom Surveyed.	Date of Contract.	Amount of Survey			When Surveyed.
			Miles.	Chs.	Rs.	
Township Lines.	Henry Hancock	Feb. 13 <sup>th</sup> 1855	7	55	73	1856
Traverse			0	30	27	1855
Section Lines.			21	38	06	1856

The above map of Township N<sup>o</sup> V North Range N<sup>o</sup> XIII West San Bernardino Meridian is strictly conformable to the field notes of the surveys thereof on file in this office which have been examined and approved.  
Surveyor General's Office.  
San Francisco California.  
July 25<sup>th</sup> 1856.

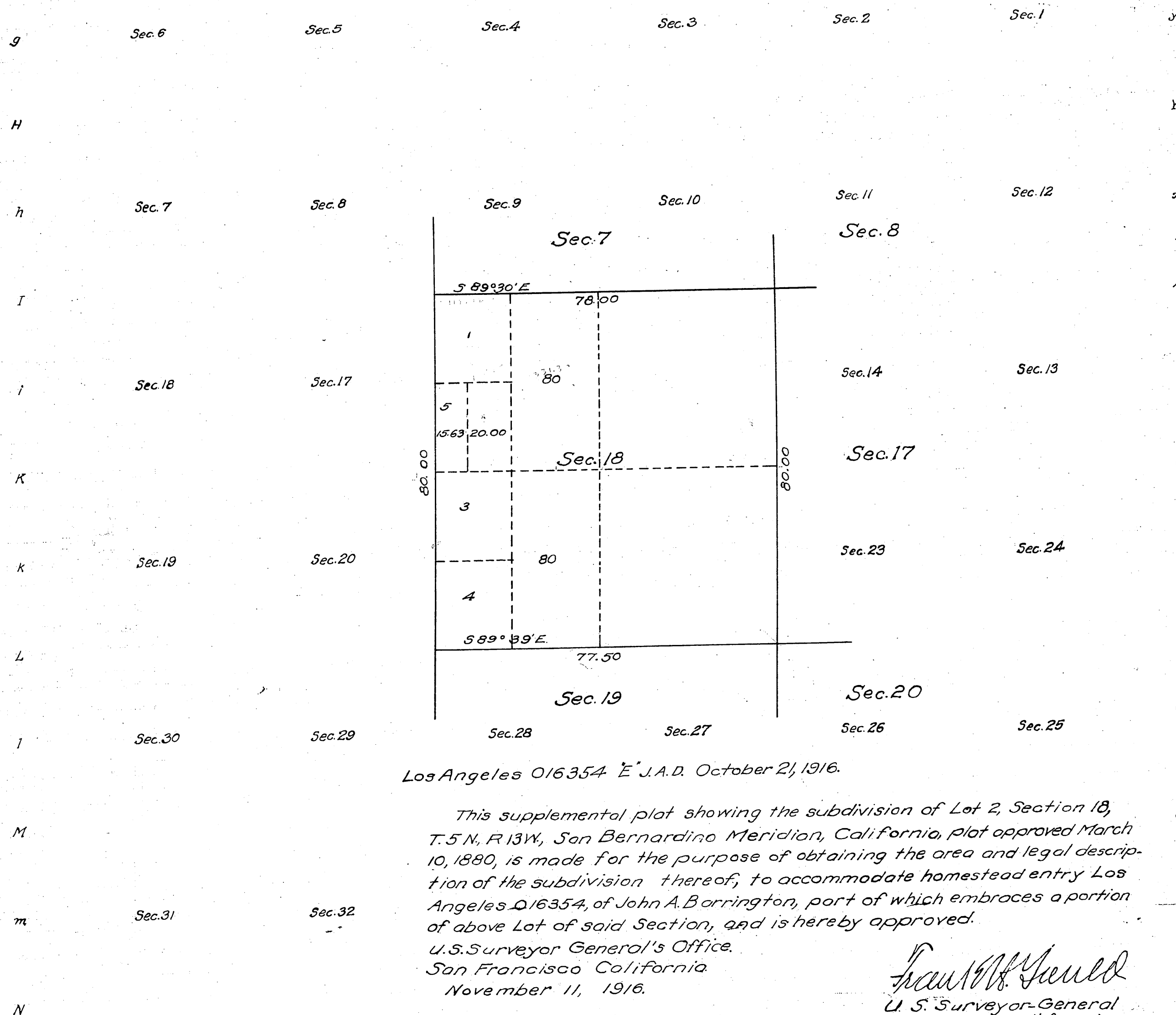
John C. McLeary

T 5 N  
R 13 W  
③

(4-675 0)

Supplemental Plat of Section 18,  
Township N<sup>o</sup>. 5 North, Range N<sup>o</sup>. 13 West San Bernardino Meridian, California.

G F F e E d D c C b B a A  
Scale: 20 chains = 1 inch



Los Angeles 016354 E J.A.D. October 21, 1916.

This supplemental plat showing the subdivision of Lot 2, Section 18, T. 5 N., R. 13 W., San Bernardino Meridian, California, plat approved March 10, 1880, is made for the purpose of obtaining the area and legal description of the subdivision thereof, to accommodate homestead entry Los Angeles 016354, of John A. Barrington, part of which embraces a portion of above Lot of said Section, and is hereby approved.

U.S. Surveyor General's Office.  
San Francisco California.  
November 11, 1916.

Frank W. Gould  
U. S. Surveyor-General  
for California.

Filed in U. S. Land Office  
Los Angeles Cal. 00  
Dec. 15-1916 9 am  
John D. Roche  
Register.

Areas in Acres.	
Public Land	
Indian Reservation	
Indian Allotments	
Mineral Claims	
Water Surface	
Total Area	

0 10 20 40 60  
Scale 40 Chains to an inch.

Mean Magnetic Declination.

Surveys Designated.	By Whom Surveyed.	Contract.		Amount of Surveys. Mls. chs. lks.	When Surveyed	
		No.	Date.		Begun.	Completed.

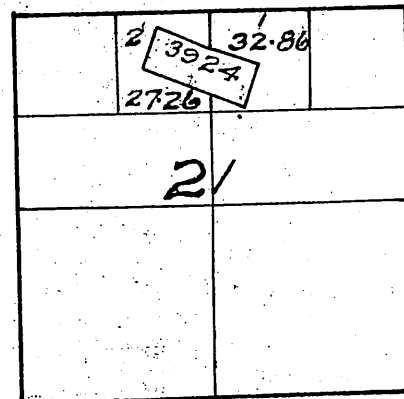
The above map of Township N<sup>o</sup> Range N<sup>o</sup> of the Meridian is strictly conformable to the field notes of the survey thereof on file in this office which have been examined and approved.  
U. S. Surveyor General's Office.

Surveyor General



T 5 N  
R 13 W  
④

T. 5 N. R. 13 W. SAN BERNARDINO MERIDIAN, CALIFORNIA.



3924 Puritan Q. Mining Claim.

The above diagram of Section 21, Township N<sup>o</sup> 5 North, Range N<sup>o</sup> 13 West,  
San Bernardino Meridian, California is correctly constructed from  
official plats on file in this Office,  
U. S. Surveyor-General's Office,  
San Francisco, California,  
March 31, 1903.

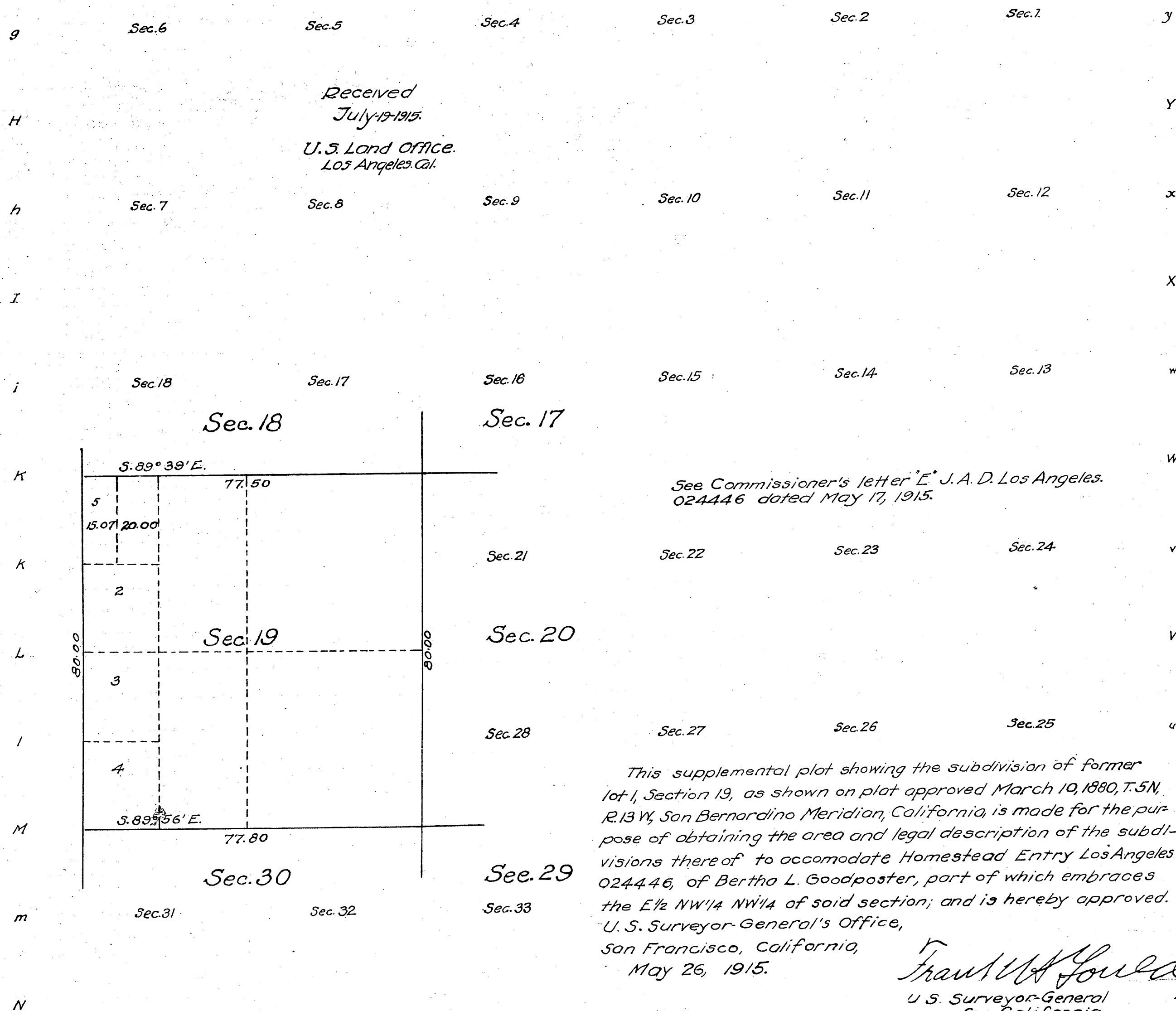
*W. S. Graham*  
U. S. Surveyor General  
for California.

Received and filed  
U. S. Land office Los Angeles Cal.  
April 3<sup>rd</sup> 1903

*A. J. Cunningham*  
Register.

(4-6759)  
Supplemental Plot of Section 19,  
Township No. 5 North, Range No. 13 West San Bernardino Meridian, California.

G F E D C B A  
Scale. 20 chains = 1 inch



This supplemental plot showing the subdivision of former lot 1, Section 19, as shown on plat approved March 10, 1880, T. 5N, R. 13W, San Bernardino Meridian, California, is made for the purpose of obtaining the area and legal description of the subdivisions thereof to accommodate Homestead Entry Los Angeles 024446, of Bertha L. Goodposter, part of which embraces the E 1/2 NW 1/4 of said section; and is hereby approved. U. S. Surveyor-General's Office, San Francisco, California, May 26, 1915.

Frank W. Gould  
U. S. Surveyor-General  
for California.

Areas in Acres.	
Public Land.	
Indian Reservation.	
Indian Allotments.	
Mineral Claims.	
Water Surface	
Total Area.	

True Meridian.

Scale 40 Chains to an inch.

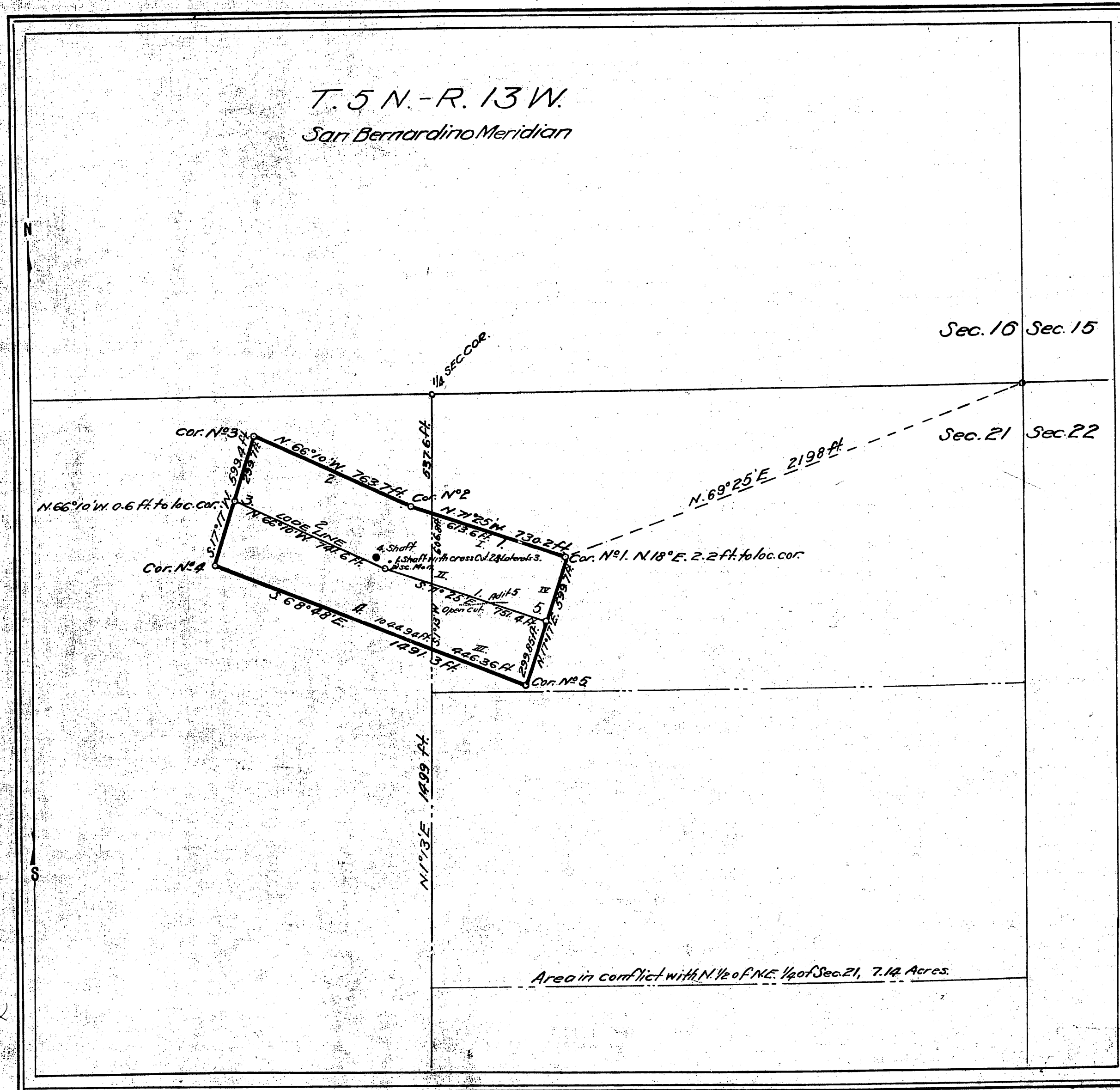
Mean Magnetic Declination

Surveys Designated.	By Whom Surveyed.	Group.		Amount of Surveys.			When Surveyed.	
		No.	Date of Instruction.	Mls.	chs.	lks.	Begun	Completed.

The above map of Township No. 5 North, Range No. 13 West of the San Bernardino Meridian is strictly conformable to the field notes of the survey thereof on file in this office which have been examined and approved. U. S. Surveyor General's Office.

Surveyor General.

Field Notes received 1st. Oct. 3. 1901  
" " " 2nd. Feb. 3. 1902



Claim Located January 1, 1896  
" Recorded  
Mineral Survey No 3924  
Application for survey dated July 13, 1901  
Los Angeles Land District.

## PLAT

OF THE CLAIM OF

W. T. Somes and F. A. Barr

KNOWN AS THE

### Puritan Quartz Mining Claim

IN CEDAR MINING DISTRICT,  
LOS ANGELES COUNTY, CALIFORNIA  
Containing an Area of 19.88 Acres  
Scale of 400 Feet to the inch.  
Variation 12° 58' East

SURVEYED September 1901 BY  
F. D. Lanterman  
U.S. Deputy Mineral Surveyor.

The Original Field Notes of the Survey of the Mining Claim of  
W. T. Somes and F. A. Barr  
known as the

### Puritan Quartz Mining Claim

from which this plat has been made under my direction  
have been examined and approved, and are on file in this Office  
and I hereby certify that they furnish such an accurate descrip-  
tion of said Mining Claim as will, if incorporated into a patent,  
serve fully to identify the premises, and that such reference  
is made herein to natural objects or permanent monuments  
as will perpetuate and fix the locus thereof.

I further certify that five hundred Dollars worth of labor has  
been expended or improvements made upon said Mining  
Claim by claimant or their grantors, and that  
said improvements consist of 1. Shaft, value \$364.,  
2. Cross Cut \$180., 3. Laterals \$240.,  
4. Shaft \$25., 5. Adit \$100

that the location of said improvements is correctly shown  
upon this plat, and that no portion of said labor or im-  
provements has been included in the estimate of expendi-  
tures upon any other claim.

And I further certify that this is a correct plat of said Mining  
Claim made in conformity with said original field notes of the  
survey thereof, and the same is hereby approved.

U.S. Surveyor General's Office

San Francisco, Cal.

March 7, 1902

W. S. Graham

U.S. Surveyor General for

California

Filed in U. S. Land Office  
Los Angeles Cal. March 10, 1902

Registered

TRACING BY H. G. 7-58  
CHECKED BY R. J. 5-24

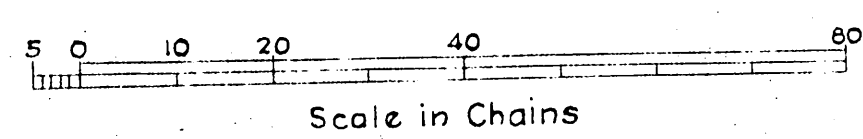
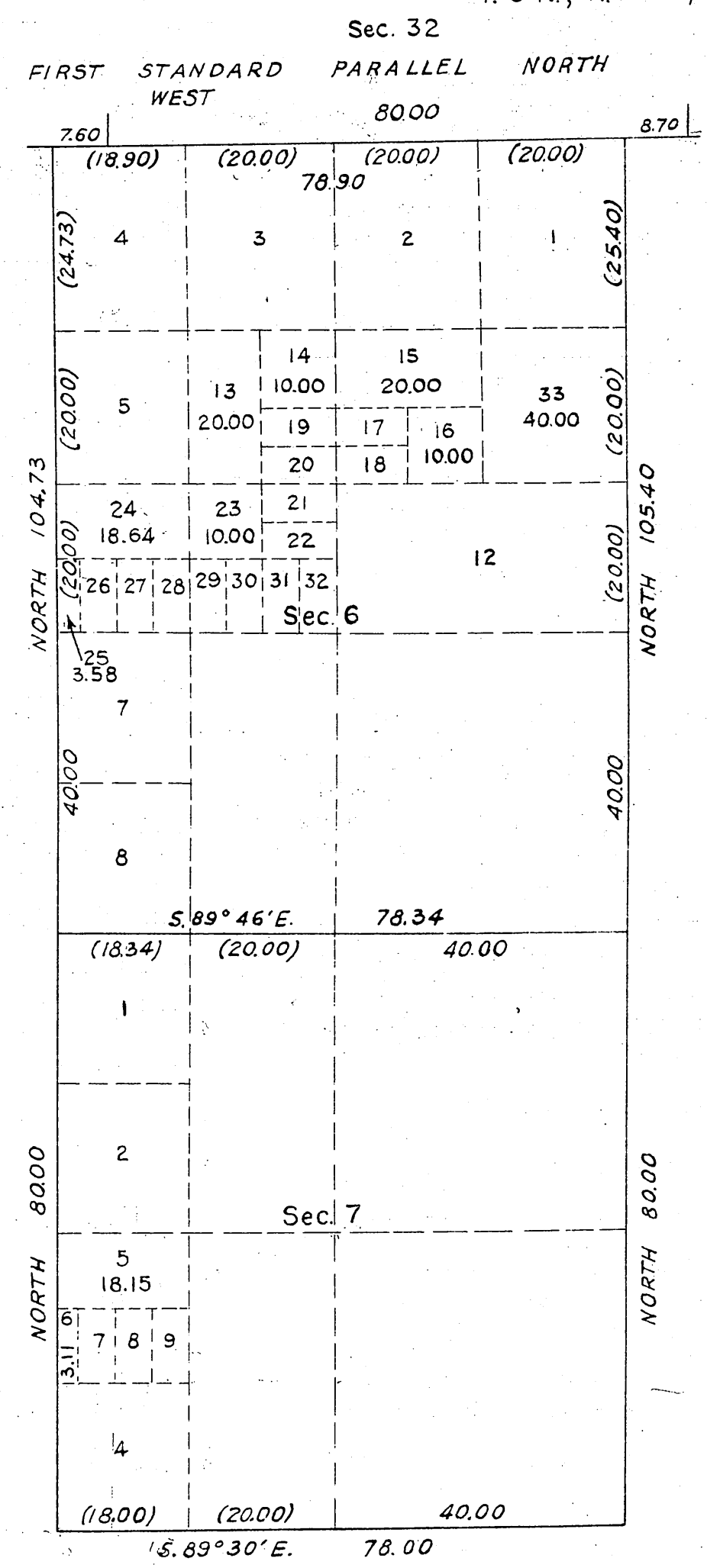
T 5 N  
R 13 W

TOWNSHIP 5 NORTH, RANGE 13 WEST, SAN BERNARDINO MERIDIAN, CALIFORNIA

7

SUPPLEMENTAL PLAT OF SECTIONS 6 & 7

T. 6 N., R. 13 W., S.B.M.



MEMORANDUM:

This plat showing a subdivision of original Lots 6, 9, 10 and 11 in Sec. 6, and Lot 3 in Sec. 7, T. 5 N., R. 13 W., of the San Bernardino Meridian, is based upon the official plat approved March 10, 1880.

Lots 17 to 22, and 26 to 32 in Sec. 6, and Lots 7 to 9 in Sec. 7 each contain 5 acres. All other newly created Lots have areas as designated therein

UNITED STATES DEPARTMENT OF THE INTERIOR  
BUREAU OF LAND MANAGEMENT  
Washington D.C., January 29, 1951

This plat showing amended Lottings, is based upon the official records and, having been correctly prepared in accordance with the regulations, is hereby accepted.

For the Director

*William F. Richards*

Chief, Branch of Surveys