

T4N
R14W
①

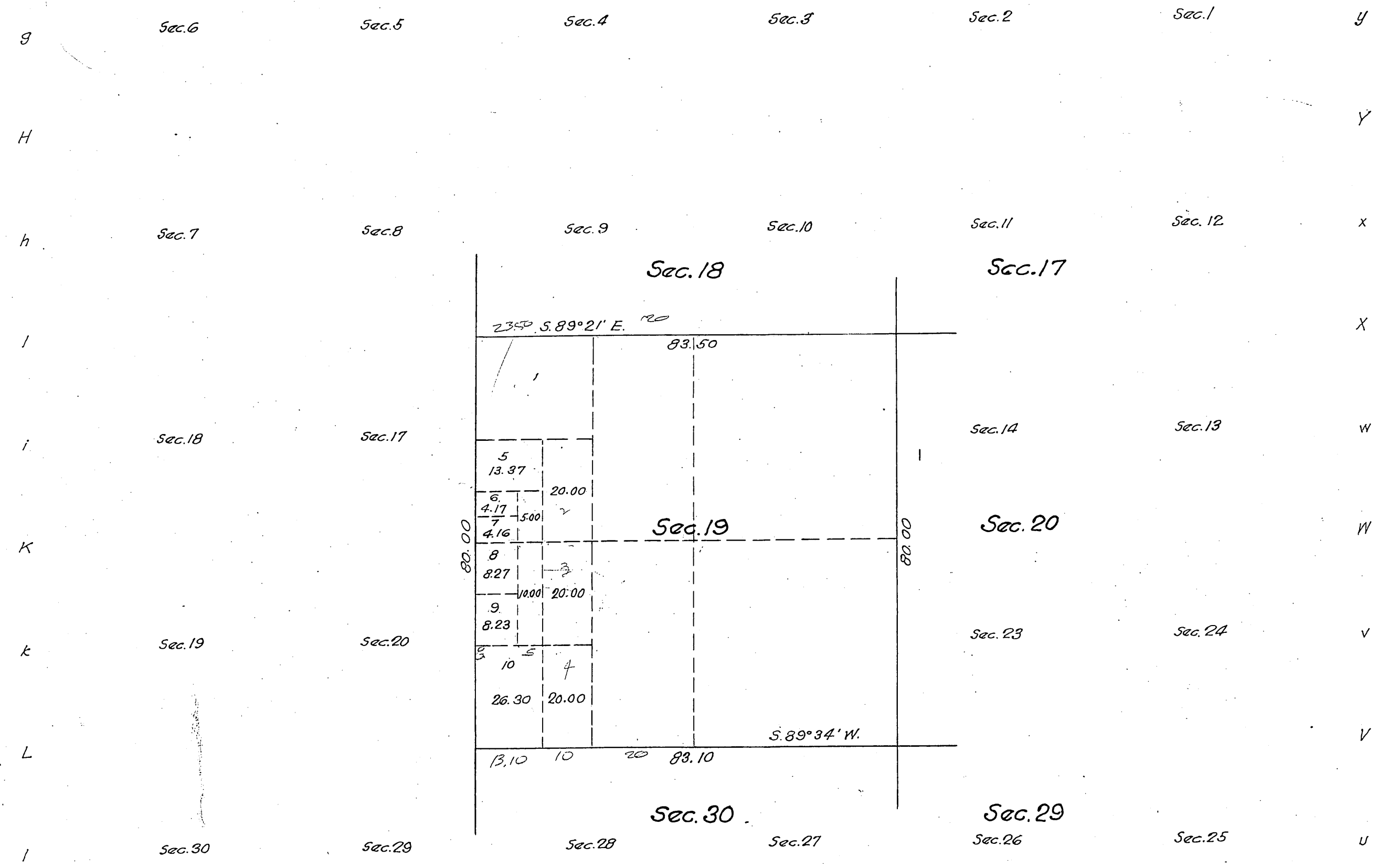
(4-6154)

Township N^o 4 North, Supplemental Plat of Section 19, Range N^o 14 West, San Bernardino Meridian, California.

G f F e E d D c C b B a A

Scale: 20 chains = 1 inch.

Received
U. S. Land Office
Los Angeles, Cal.
Date Sept. 9. 1918
Hour 9 AM
B. D. Groves
Register.



Los Angeles 023283 E June 27, 1918.

This supplemental plat of Lots 2, 3 and 4, section 19, T. 4 N, R. 14 W, San Bernardino Meridian, California, plat approved March 10, 1880, is made for the purpose of obtaining the area and legal description of the subdivisions thereof, to accommodate homestead entry Los Angeles 023283, of Kate Fraels; part of which embraces the NE 1/4 NE 1/4 of Lot 4, the E 1/2 and NW 1/4 and NE 1/4 SW 1/4 of Lot 3, and SW 1/4 SW 1/4 of Lot 2, of said section, and is hereby approved.

U. S. Surveyor-General's Office.
San Francisco, California,
July 6 1918.

Luís H. Mason
U. S. Surveyor General
for California.

Areas in Acres	
Public Land	
Indian Reservation	
Indian Allotments	
Mineral Claims	
Water Surface	
Total Area	

0 10 20 40 80

Scale 40 chains to an inch

Mean Magnetic Declination

Surveys Designated	By Whom Surveyed	Contract		Amount of Surveys			When Surveyed	
		No.	Date	Mls.	chs.	lks.	Begun	Completed

The above map of Township No. _____ Range No. _____ of the _____ Meridian _____ is strictly conformable to the field notes of the survey thereof on file in this office, which have been examined and approved.
U. S. Surveyor-General's Office.
Surveyor-General.

G f F e E d D c C b B a
 scale: 20 chains = 1 inch.

82.20'

82°30' E.

82.50'

80.00'

82°30' W.

79.91'

4

2

1

3

9

7.30

1.00

10

12.33

20.00'

9.93

10.00

20.00

Sec. 6

6

7

Sec. 7

Los Angeles 020353, "E" J.A.D., April 18, 1917.

This supplemental plat showing the subdivision of Lots 3 and 5, Section 6 T.4N. R.14W, San Bernardino Meridian, California, plat approved March 10, 1880, is made for the purpose of obtaining the area and legal description of the subdivisions thereof, to accommodate homestead entry Los Angeles 020353, of Frank A. Smith, part of which embraces portions of Lots 3 and 5, of said Section, and is hereby approved.

U.S. Surveyor - General's Office.
San Francisco California.
April 25, 1917.

Frank A. Smith

Areas in Acres	
Public Land	
Indian Reservation	
Indian Allotments.	
Mineral Claims	
Water Surface	
Total Area.	

Scale 40 Chains to an inch
Mean Magnetic Declination

[illegible]

The above map of Township No. _____ Range No. _____ of the _____ Meridian is strictly conformable to the field notes of the survey thereof on file in this office which have been examined and approved.

U.S. Surveyor General's Office

Surveyor General.

San Bernardino Meridian.

③

C.S. 9051 - N. Boundary
C.S. 9052 - S. " (E. 4 miles)
E. side Sec. 32.
N " " 32, 31

Traverse La Sol-
idad Pass to E.

C.S 3086 All of E.E. of Twp.
C.S 3043 W. Bdy. Twp.

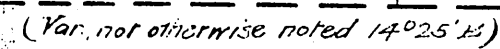
C.S. 9043 W. Bay. Twp.

C.S. 9369 For. W. lwp. Bdy.
and E 81 W & of Twin and

and E. & W. E. of I.W.P. and
E. line Sec. 16 and 13.

Angeles Forest Reserve

boundary - C.S. 9401
C.S. 9442 - sec 5



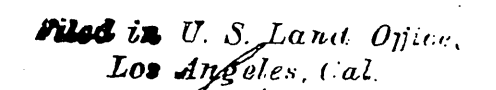
S. 89° 47' E.

Aggregate Area of Public Lands Surveyed 52,541.84 Acres
Estimated " " Unsurveyed Lands 634.00 "
Aggregate 53,175.84 "

<i>Surveys Designated</i>	<i>By whom Surveyed</i>	<i>Date of Contract</i>	<i>Amount of Surveys</i>	<i>When Surveyed</i>
<i>Tomahup lines colored brown</i>	<i>Henry Kancock</i>	<i>February 15th 1885</i>		<i>1885</i>
<i>West B^{ds} of T^r not colored</i>	<i>W H Norway</i>	<i>September 19th 1876</i>		<i>1876</i>
<i>North, East & South B^{ds} of T^r</i>	<i>"</i>	<i>October 10th 1879</i>	<i>16 M^s 2 cts. 20 l^{ts}.</i>	<i>1879</i>
<i>Section lines</i>	<i>"</i>		<i>59 . 6 . 31 .</i>	<i>November 19th 1879</i>

Signed
Theo. Wagner
U.S. Surv. Genl. Cal.

Accepted G. L. O.
Aug. 12, 1924



Sept. 6-1924.
Hendly N. Valentine
Register.

This supplemental plat, showing the subdivision of lots 1, 3 and 4, section 7, and lot 1, section 18, T. 4 N., R. 14 W., S.B.M., California, plat approved March 10, 1880, is made for the purpose of obtaining the area and legal description of the subdivisions thereof, to accommodate entry Los Angeles 025441 of Giaconio Perucca, which includes, with other lands, portions of above lots, and is hereby approved.

U.S. Surveyor General for California.

Scale 20 chains to an inch.

Mean Magnetic Declination...

[illegible]

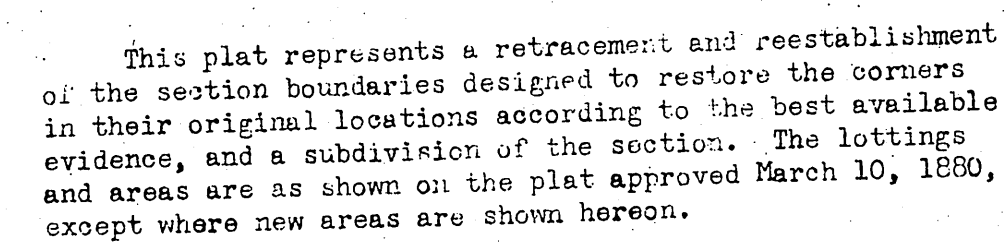
U. S. Surveyor General's Office.

Surveyor General.

HSP

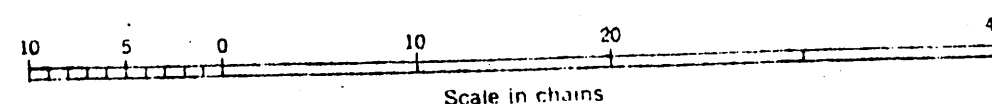
Traced by Gus N. Apr. 29, 1929
Checked by Booth Apr. 29, 1929

DEPENDENT RESURVEY AND SUBDIVISION OF SECTION 5



FOR Gov't. Field Notes See C.S. 9440

Survey executed by D. R. Averill and G. Marvin Litz beginning December 19, 1947 and completed January 5, 1948, under special instructions for Group 355, dated July 29, 1947.



UNITED STATES DEPARTMENT OF THE INTERIOR
BUREAU OF LAND MANAGEMENT

Washington, D. C., December 14, 1949

This plat is strictly conformable to the approved field notes, and the survey, having been correctly executed in accordance with the requirements of law and the regulations of this Bureau, is hereby accepted.

For the Director

William F. Richards
Chief, Branch of Surveys

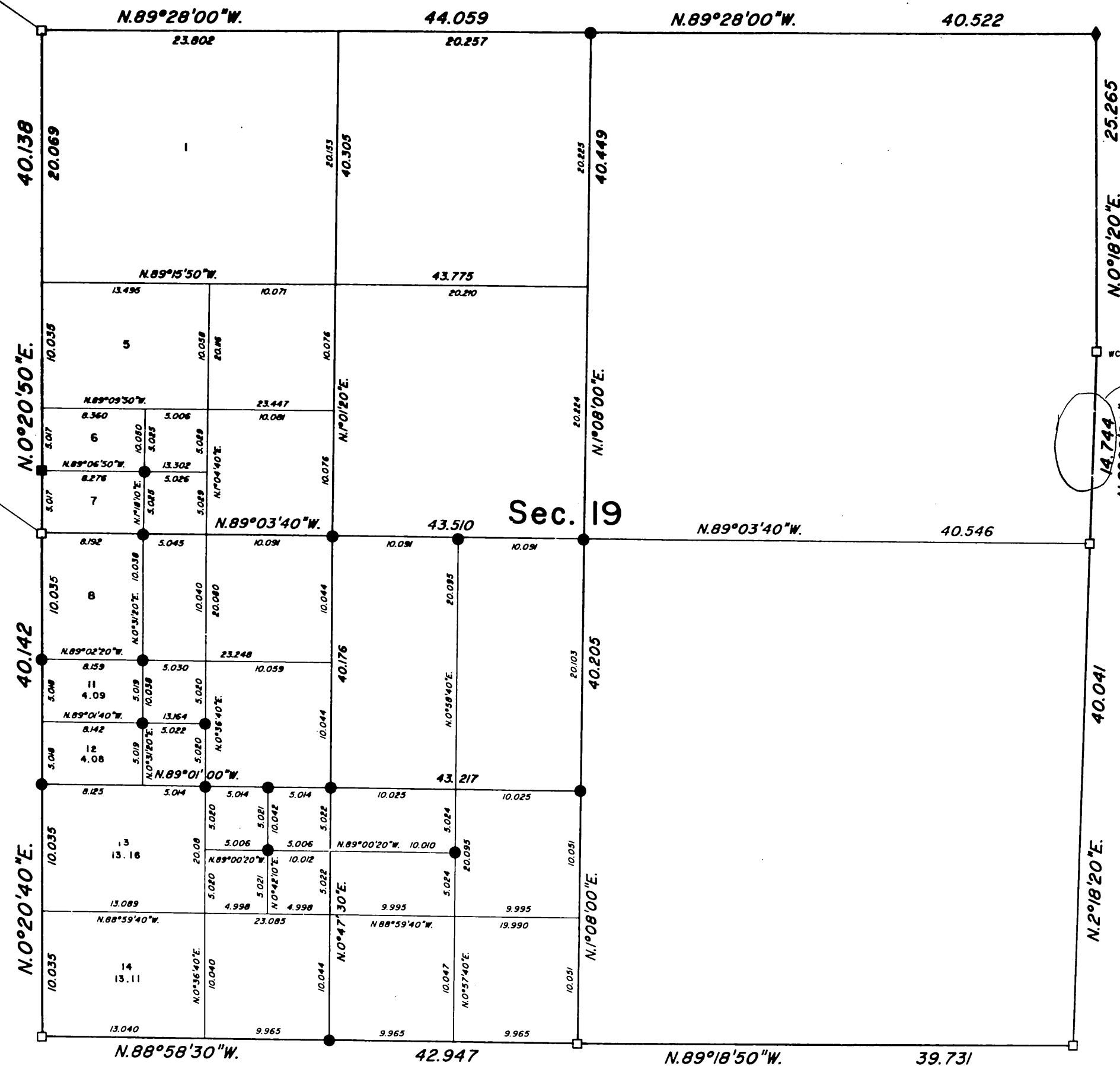
TOWNSHIP 4 NORTH, RANGE 14 WEST, OF THE SAN BERNARDINO MERIDIAN, CALIFORNIA. ORIGINAL

DEPENDENT RESURVEY AND SUBDIVISION

BLM Sect. Con. Sta. No. 0607180
Latitude 34°25'25.810"N.
Longitude 118°23'51.469"W.
NAD 83 (1992)

T. 4 N., R. 14 W.

BLM Sect. Con. Sta. No. 0607170
Latitude 34°24'59.609"N.
Longitude 118°23'51.660"W.
NAD 83 (1992)



A history of surveys is contained in the field notes.

This plat represents the dependent resurvey of a portion of the west boundary, and a portion of the subdivisional lines, designed to restore the corners in their true original locations according to the best available evidence, and the subdivision of section 19, Township 4 North, Range 14 West, San Bernardino Meridian, California.

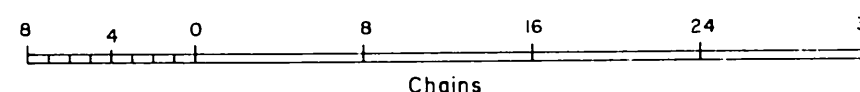
The areas are as shown on the supplemental plat approved July 6, 1918, and the township plat approved March 10, 1880.

Resurvey was executed by Charles I. Doman, Supervisory Cadastral Surveyor, beginning July 6, 1994, and completed September 29, 1994, pursuant to Special Instructions dated March 30, 1994, for Group No. 1200, California.

INCORRECT DISTANCE
BLM WILL SEND US A
NEW SHEET PER J.M. LANDAUM
U.S. FOREST SERVICE
ANGELS NATIONAL FOREST
(626) 574-5305
2/5/98

Legend

- ◆ Found Original Corner - Remonumented
- Found Local Corner - Not Remonumented
- Found Local Corner - Remonumented
- Established/Reestablished Corner Position - Monumented



UNITED STATES DEPARTMENT OF THE INTERIOR
BUREAU OF LAND MANAGEMENT
Sacramento, California

This plat is strictly conformable to the approved field notes, and the survey, having been correctly executed in accordance with the requirements of law and the regulations of this Bureau, is hereby accepted.

For the Director

Clifford E. Johnson August 22, 1996
Chief Cadastral Surveyor-California

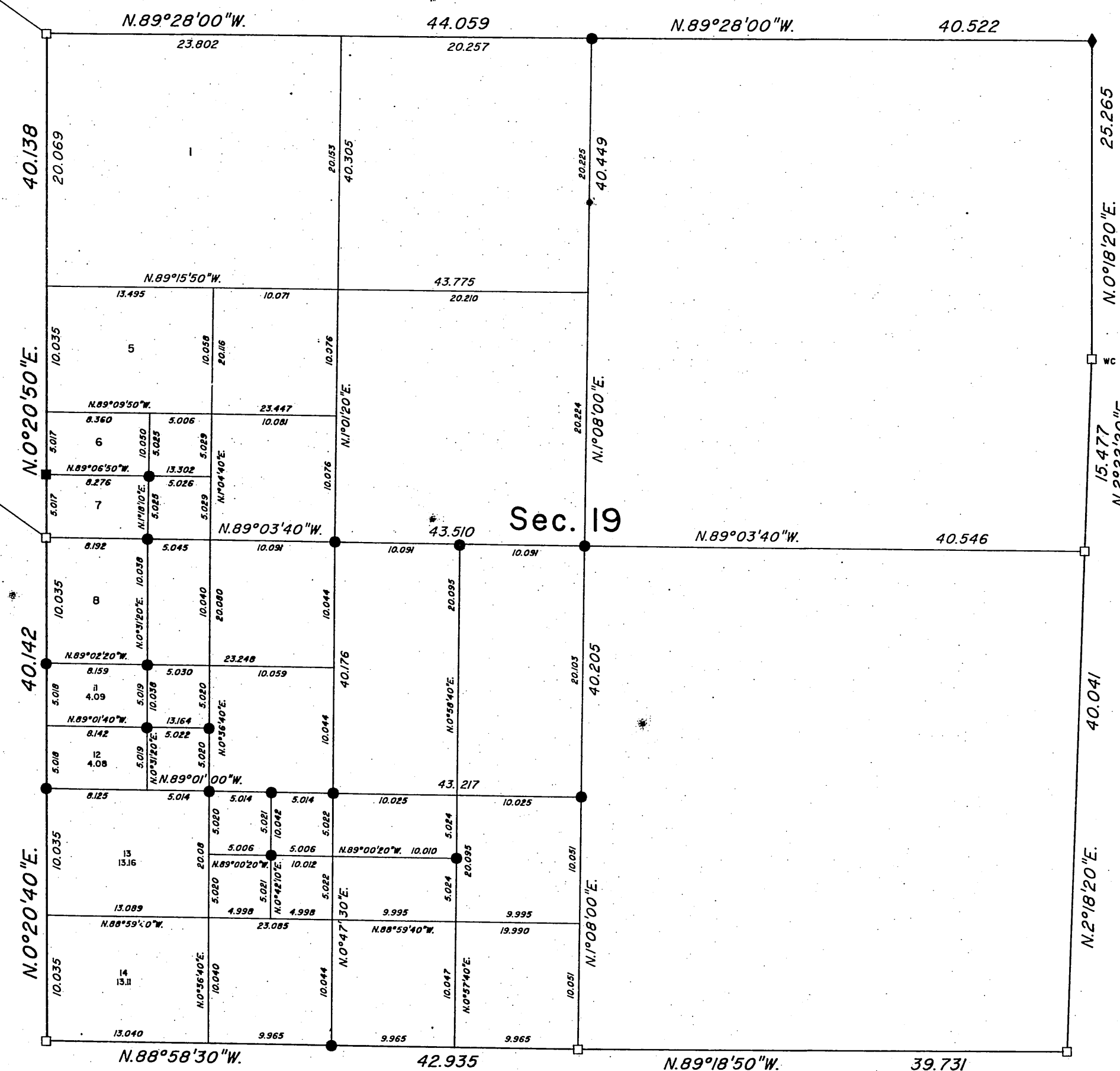
D.a.d.
CID

TOWNSHIP 4 NORTH, RANGE 14 WEST, OF THE SAN BERNARDINO MERIDIAN, CALIFORNIA. ORIGINAL

AMENDED PLAT OF THE DEPENDENT RESURVEY AND SUBDIVISION

BLM Sat. Con. Sta. No. 0607180
Latitude 34°25'25.810"N.
Longitude 118°23'51.469"W.
NAD 83 (1992)

BLM Sat. Con. Sta. No. 0607170
Latitude 34°24'59.609"N.
Longitude 118°23'51.660"W.
NAD 83 (1992)



A history of surveys is contained in the field notes.

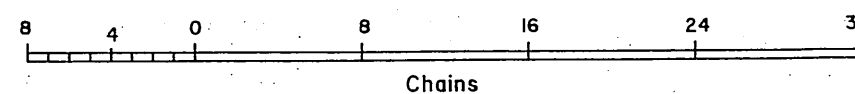
This plat supercedes the plat accepted August 22, 1996 and represents the dependent resurvey of a portion of the west boundary, and a portion of the subdivisional lines, designed to restore the corners in their true original locations according to the best available evidence, and the subdivision of section 19, Township 4 North, Range 14 West, San Bernardino Meridian, California.

Except as depicted hereon, lottings and areas are as shown on supplemental plat approved July 6, 1918, and the township plat approved March 10, 1880.

Resurvey was executed by Charles I. Doman, Supervisory Cadastral Surveyor, beginning July 6, 1994, and completed September 29, 1994, pursuant to Special Instructions dated March 30, 1994, for Group No. 1200, California.

LEGEND

- ◆ Original Evidence Recovered: Remonumented
- Local Evidence Recovered: Not Remonumented
- Local Evidence Recovered: Remonumented
- Position Determined and Monumented



UNITED STATES DEPARTMENT OF THE INTERIOR
BUREAU OF LAND MANAGEMENT
Sacramento, California

This plat, having been correctly prepared in accordance with the requirements of law and this Bureau, is hereby accepted.

For the Director

John G. Pritz September 6, 2000
Chief Cadastral Surveyor—California

D.a.d.
CID