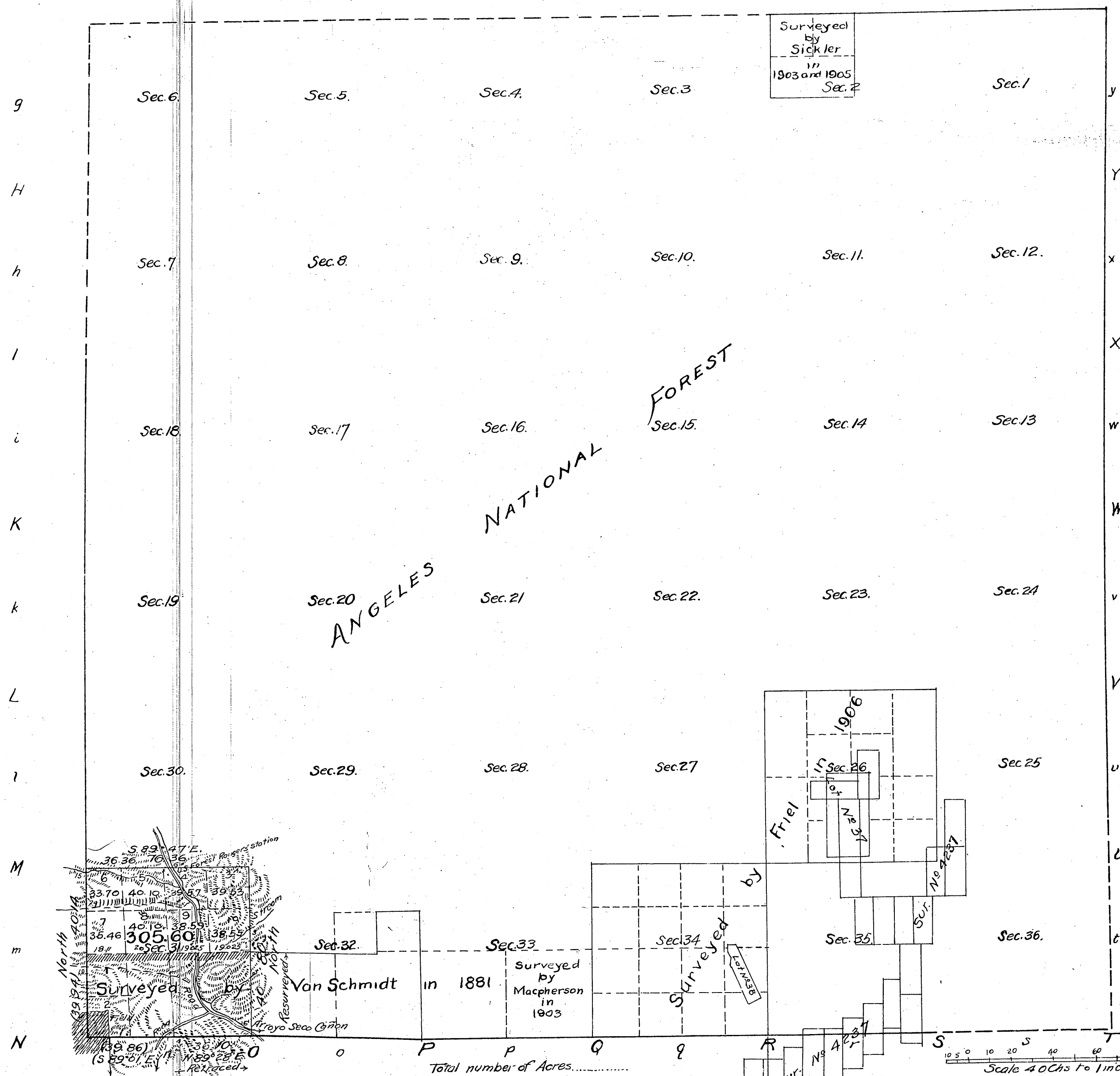


(4-6754)

Township No 2 North, Range No 12 West, San Bernardino Meridian, California.

G F E D C B A



Rec'd Apr. 24 1912  
U.S. Land Office  
Los Angeles, Calif.

Sec. 33 - See C. S. 9142

Area	
Public Land previously surveyed	2,368.94 Acres
" " surveyed by Friel, current contract	305.60 "
Area of Lots 37 and 38	99.42 "
" " Mineral Claims, Sur. No 4237	
in Sec. 26 outside of Lot No 37	42.99
Estimated area of Unsurvd. Public Land	2007.905
Aggregate	22,896.00

The line of demarcation between the areas previously counted in total acreage surveyed, and the new surveys, is indicated thus

Filed in U. S. Land Office,  
Los Angeles, Cal.  
OCT 4 1912  
*James D. ...*  
Register.

Latitude 34°12'N  
Longitude 118°10'W  
Mag. Dec. 14°10'E } at S.E. cr. Sec. 31.

Survey Designated	By Whom Surveyed	Date of Spl. Inst.	Amount of Survey Chs.	When Begun	Surveyed Completed
Lines previously surveyed, exhibited on plats approved Apr. 27, 1881, Jan. 29/1904, Dec. 14, 1905 and July 9, 1907					
Sbdy. of Tr. retraced	Legrand Friel	August 31, 1903	36 10	Oct. 22, 1909	Oct. 22, 1909
Sec. Lines resurveyed	"	"	40 00	" 15 "	" 15 "
Sec. Lines new	"	"	1 36 36	" 20 "	" 21 "

Govt. Field Notes

C.S. 9072 - All Bdy's Sec. 31.  
Resurvey of the (Cutting) W. bdy. of Sec. 31 and the (Norway) W. 1/2 of the N. bdy. of Sec. 31 - C.S. 9417

The above Map of Township No 2 North, of Range No 12 West, San Bernardino Meridian, California, is strictly conformable to the field notes of the survey thereof on file in this Office, which have been examined and approved.

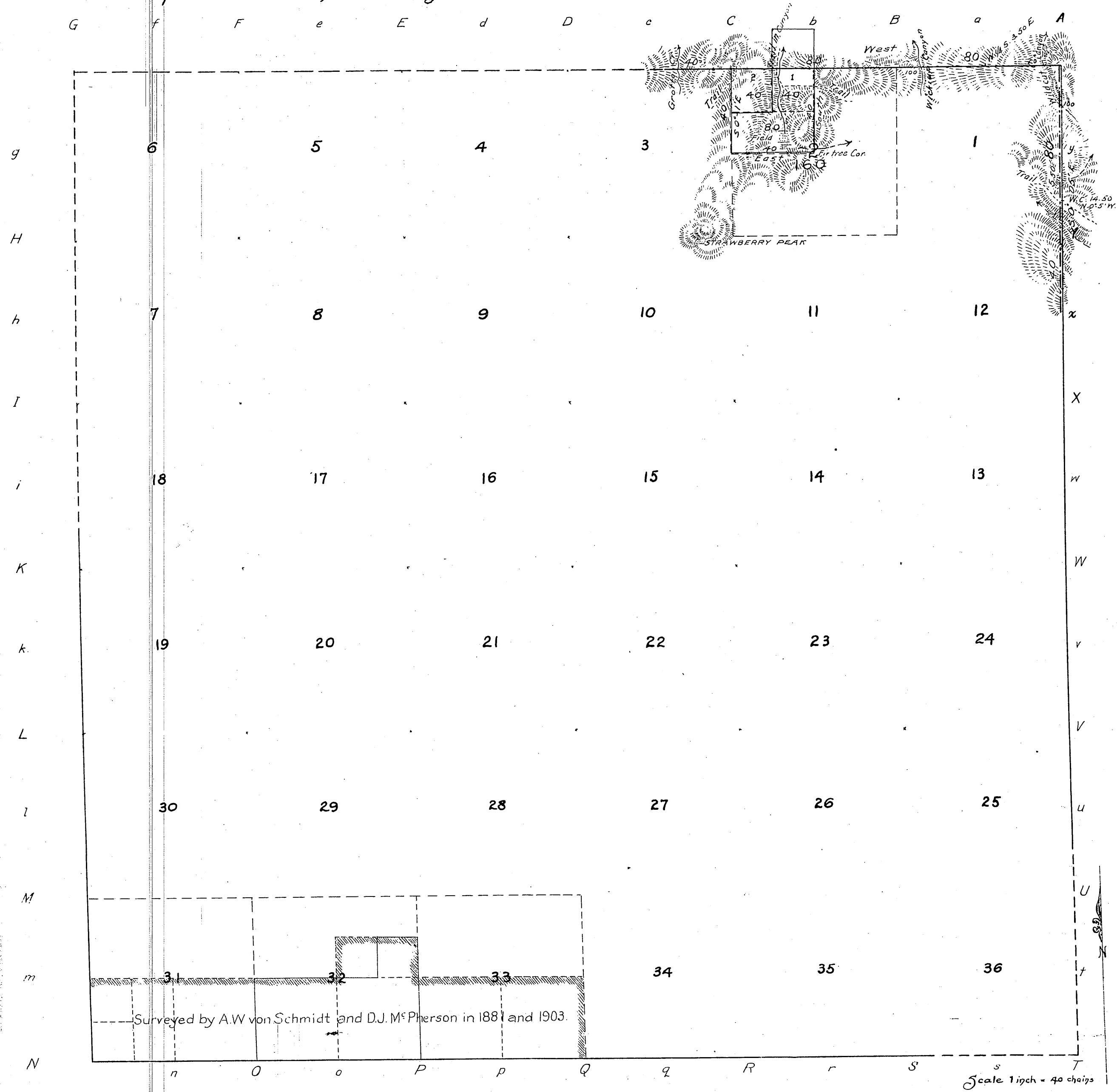
U.S. Surveyor General's Office,  
San Francisco, California,  
June 14, 1911.  
*E.H. Archer*  
U.S. Sur. Gen'l  
for California.

T2N  
R12W

②

(4-675a)

Township N<sup>o</sup> 2 North, Range N<sup>o</sup> 12 West, San Bernardino Meridian, California



Public Land previously Surveyed	1041.00 Ac.
"    " surveyed by Sickler	160.00 "
Aggregate Area of Public Lands surveyed	1201.00 "
Estimated " Unsurveyed Land	21840.00 "
Aggregate	23041.00 "

All of this Township is within the San Gabriel Forest Reserve. Proclamation of Dec. 20, 1892

Areas previously returned as surveyed, are bounded by a line indicated thus

C.S. 9142 - Sec. 33

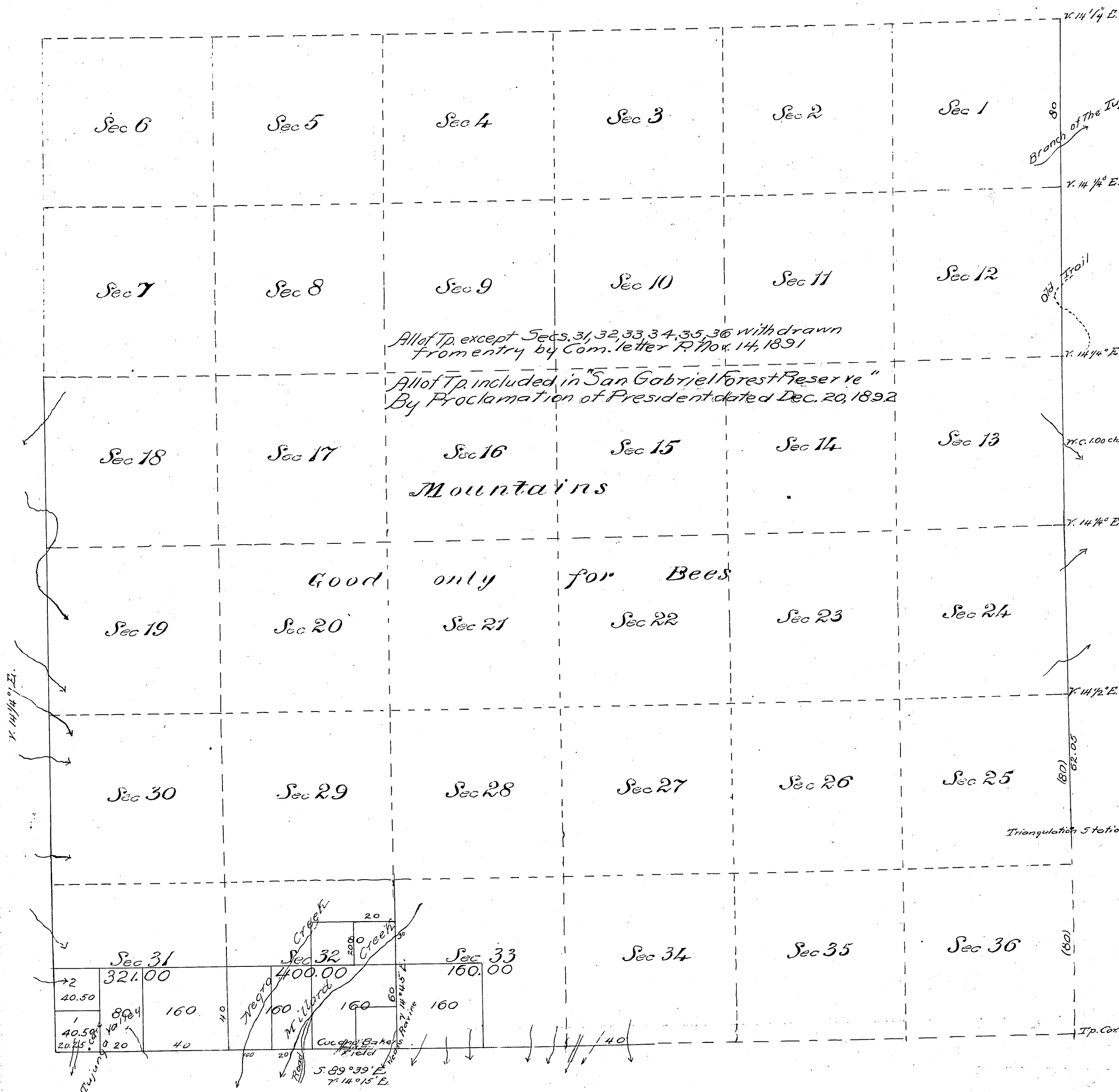
Filed in U. S. Land Office  
Los Angeles, Cal., April 16, 1906  
*Frank C. Purser*  
Register

Lat 34° 18' North } near center of Sec. 35  
Long 118° 6' West } T. 2 N. R. 12 W. S. B. M.

Surveys Designated	By Whom Surveyed	No.	Date of Contract	Amount of Surveys Ch <sup>2</sup> Lk <sup>2</sup>	When Surveyed	Magn. Decl.
Lines previously surveyed, exhibited on Map approved January 29, 1904.						
Part of E. bdy of Tp. reserved.	Wm. A. Sickler	222	August 14, 1903	1 40 00	1903	15° East
North bdy of Tp. new	"	"	"	See plat of T. 2 N. R. 12 W.	1903 and 1905	"
Section and leg. sub- lines, new	"	"	"	1 40 00	Oct. 4, 1905	"

The above Map of Township N<sup>o</sup> 2 North, of Range N<sup>o</sup> 12 West, San Bernardino Meridian, California, is strictly conformable to the field notes of the survey thereon file in this Office, which have been examined and approved.  
U. S. Surveyor General's Office,  
San Francisco, California,  
December 14, 1905  
U. S. Sur. Genl.  
for California.

Township N.° 2 North, Range N.° 12 West, San Bernardino Meridian.

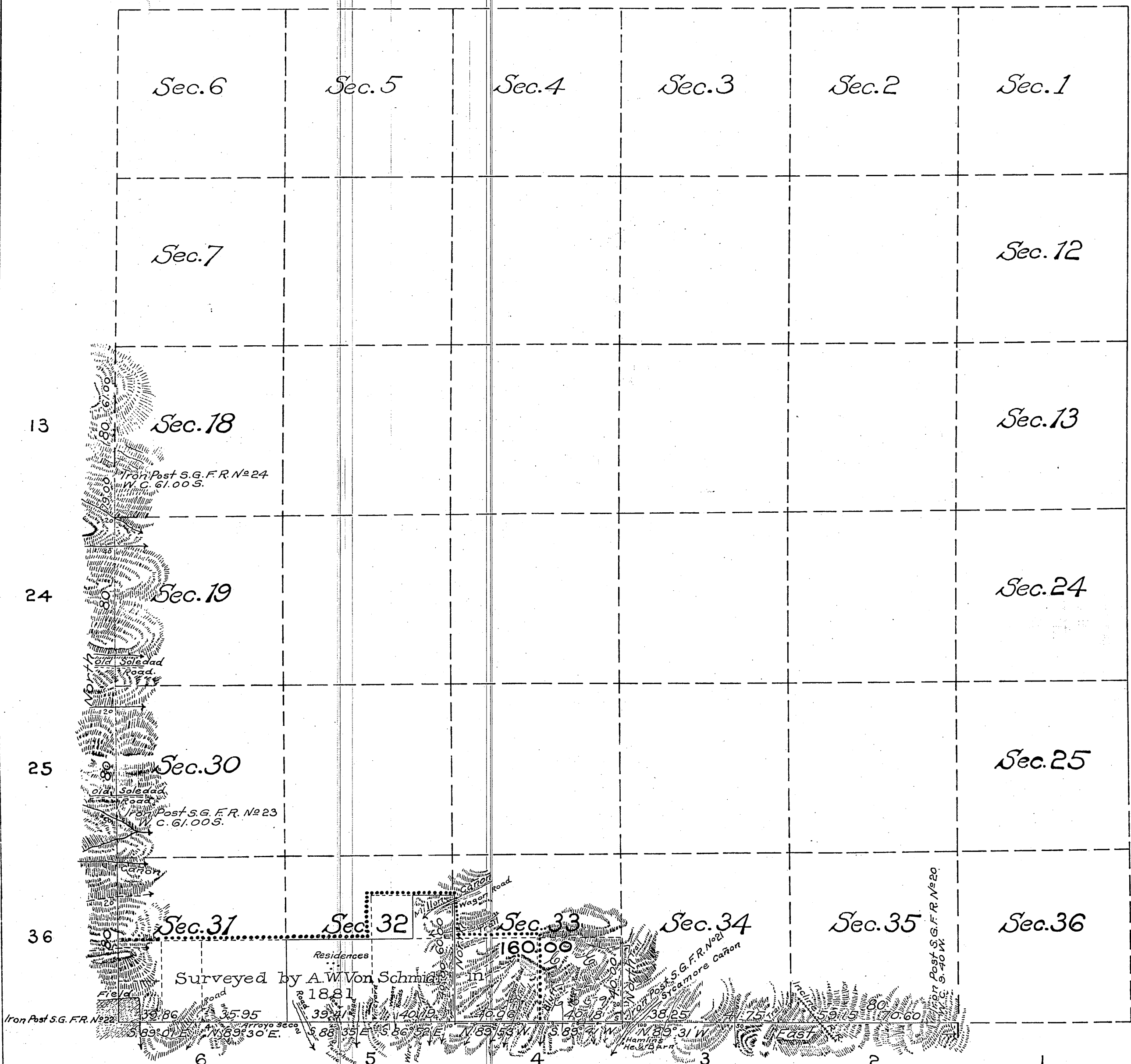


Surreys Designated	By whom Surveyed	Date of Contract	Amount of Surreys	When Surveyed
East and West b'dies. of Tp.	W. H. Norway	July 31 <sup>st</sup> 1875		1875
South boundary " "	J. Goldsmith	February 25 <sup>th</sup> 1875		1875
Legal Sub division lines	J. W. Van Schmidt	(August 7 <sup>th</sup> 1880 and Spec. Instr. Feb. 25 <sup>th</sup> 1881)	2 mls. 40 chs. 00 lvs	March 25 <sup>th</sup> 1881

Gov't. Field Notes  
C.S. 9071 - E. N. & W. Bdy's of surveyed land in Sec. 32. C.S. 9282 - Sec. 31, Sec. 34 - C.S. 9285  
C.S. 9090 - W. B. of Twp. (by Norway 1875, and Cutting 1896) Alpine Tavern Survey - C.S. 9287  
C.S. 9142 - Sec. 33  
C.S. 9275 - Sec. 26 & 34 C.S. 9279 - Sec. 32  
C.S. 9290 - Sec. 33 - C.S. 9291  
W. Boundary Sections 6 + 7 - C.S. 9364

TOWNSHIP N<sup>o</sup> 2 N. RANGE N<sup>o</sup> 12 W. SAN BERNARDINO MERIDIAN CALIFORNIA

Gov't Field Notes  
C.S. 9065 S. Boundaries Secs. 31, 32, 33, 34 & 35, W.B. 30 & 31  
C.S. 9142 S., E., W. " Sec. 33  
Por. of South and West bdy. of Twp. (Angelus National Forest boundary line), C.S. 9382  
Resurvey of the (Cutting) W. bdy. of Sec. 31 and the (Norway) W. 1/2 of the N. bdy. of Sec. 31 - C.S. 9417.



Area of Public Land previously surveyed 881.00 Acres  
" " " " surveyed by Macpherson 160.00 "  
Total Area of Public Land surveyed 1,041.00 Acres  
Estimated Area of Unsurveyed Land 22,000.00  
Aggregate 23,041.00

NOTE: All of this Township is within the San Gabriel Forest Reserve

Areas previously returned as surveyed, are bounded by a line indicated thus.....

Filed in U. S. Land office, Los Angeles Cal. June 13, 1904,  
A. J. Enos, Registrar

Latitude 34° 12' North } near S. E. Cor. Sec. 33, T. 2 N. R. 12 W.  
Longitude 118° 08' West }

Surveys Designated	By whom Surveyed	Contract		Amount of Surveys			When Surveyed
		No.	Date	M/s.	Chs.	Lks.	
Lines previously surveyed, exhibited on Map approved April 21, 1881.							
Part of W. & S. B'dies of Tp. (B'dies of S.G.F.R.)	L. H. Cutting	126	Feb. 24, 1896				1896
" " South Bdy of Tp. Re-traced. " "	David J. Macpherson	Inst.	December 17, 1902	1	00	24	1903
Section Lines, Re-surveyed		"	"		60	00	"
" " New		"	"		40	00	June 9, 1903

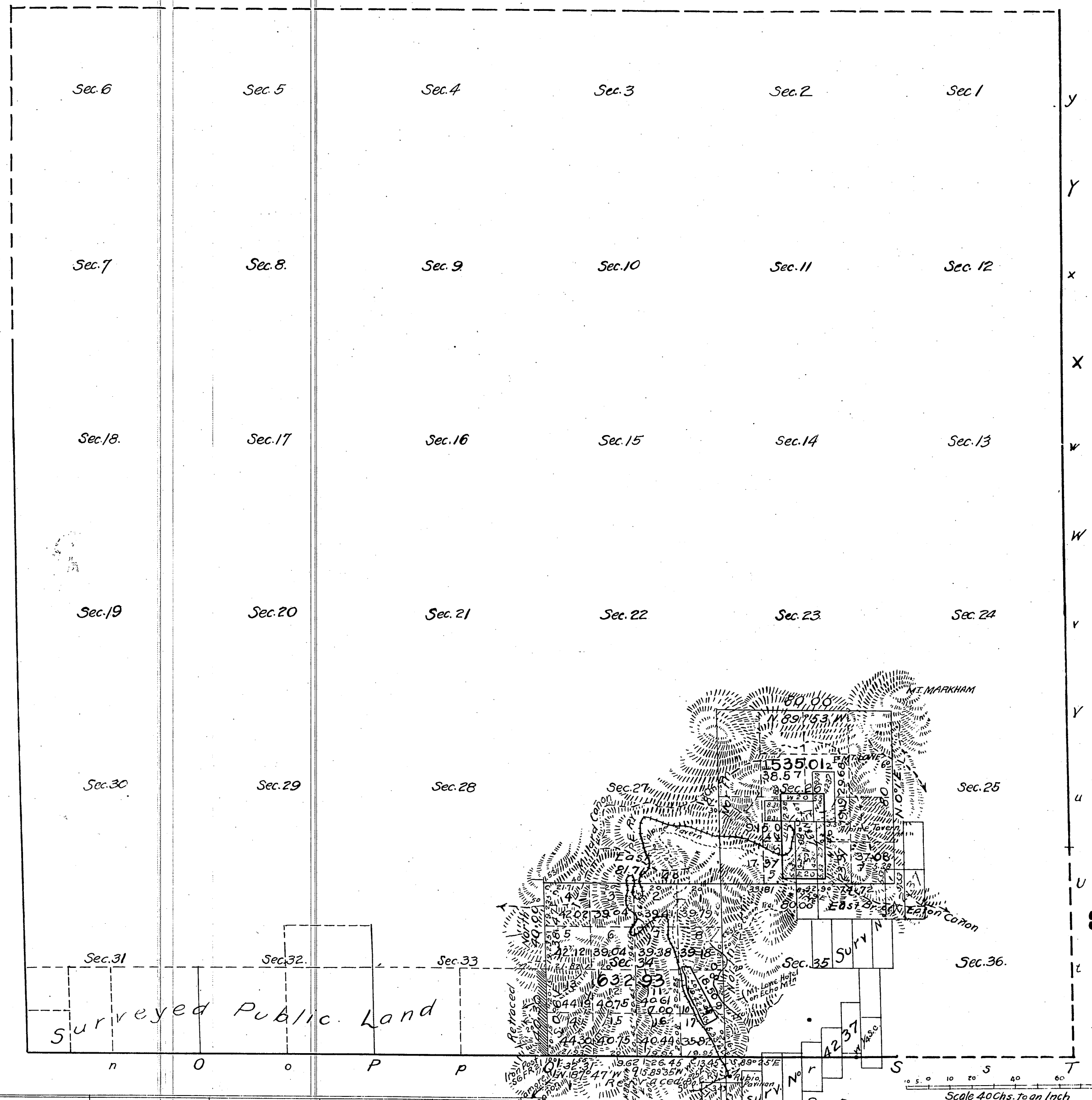
The above Map of Township N2 North, Range N12 West San Bernardino Meridian, California, is strictly conformable to the field notes of the surveys thereof, on file in this Office, which have been examined and approved.  
U. S. Surveyor-General's Office.  
San Francisco, California.  
January 29, 1904.

W. S. Graham  
U. S. Surveyor-General for California



## Township N° 2 North, Range N° 12 West, San Bernardino Meridian, California.

G f F e E d D c C b B b A



Lot N° 37 - 80 Acre Tract at Alpine Tavern, Contains 80 Acres  
 " " 38 - 20 " " " Echo Mountain " 19.42 "  
 Surv. N° 4237 - Monitor Con. Land Claims

NOTE: Lots N° 37 and 38, were granted to the Pasadena and Mount Wilson Railway Co. (Pacific Electric Railway Co. successor) by Act of Congress, approved February 28, 1899.

Public Land previously surveyed  
 " surveyed by Friel 1167.94 Acres  
 Area of Lots 37 and 38 99.42 "  
 " Surv. N° 4237 in Sec. 26 outside of lot 37 24.99 "  
 Estimated Area of unsurveyed Land

All of this Township is within the San Gabriel Forest Reserve - Proclamation of Dec 20, 1892

The line of demarcation between the areas previously counted in total acreage surveyed and the new surveys is indicated thus

For Sec. 33 - See C. S. 9142

Lot 34 12' N } in center of Sec. 3, T. 1 N., R. 12 W  
 Long. 118° 08' W  
 Magn. decl'n 14° 31' E

Surveys Designated	By Whom Surveyed	Date of Contract	Amount of Surveys M. Ch. Fk.	When Surveyed
Lines previously surveyed, exhibited on maps of earlier dates.				
S. Bdy of Tp retraced	Legrand Friel	Spec. Instr. July 24, 1905	1 01 83	1906
Line bet. Secs 2 & 3 T. 1 N. R. 12 W.	"	"	37 73	"
Section lines retraced	"	"	40 30	"
" " new	"	"	6 41 71	"
Bodies of lots 37 & 38	"	"	2 30 56	"
Connecting lines	"	"	1 16 33	September 3, 1906

The above Map of Township N° 2 North of Range N° 12 West, San Bernardino Meridian, California, is strictly conformable to the field notes of the survey thereon on file in this Office, which have been examined and approved.

U. S. Surveyor General's Office  
 San Francisco, California,  
 July 9, 1907

W. J. Graham  
 U. S. Sur. Genl.  
 for California

Gov't Field Notes.

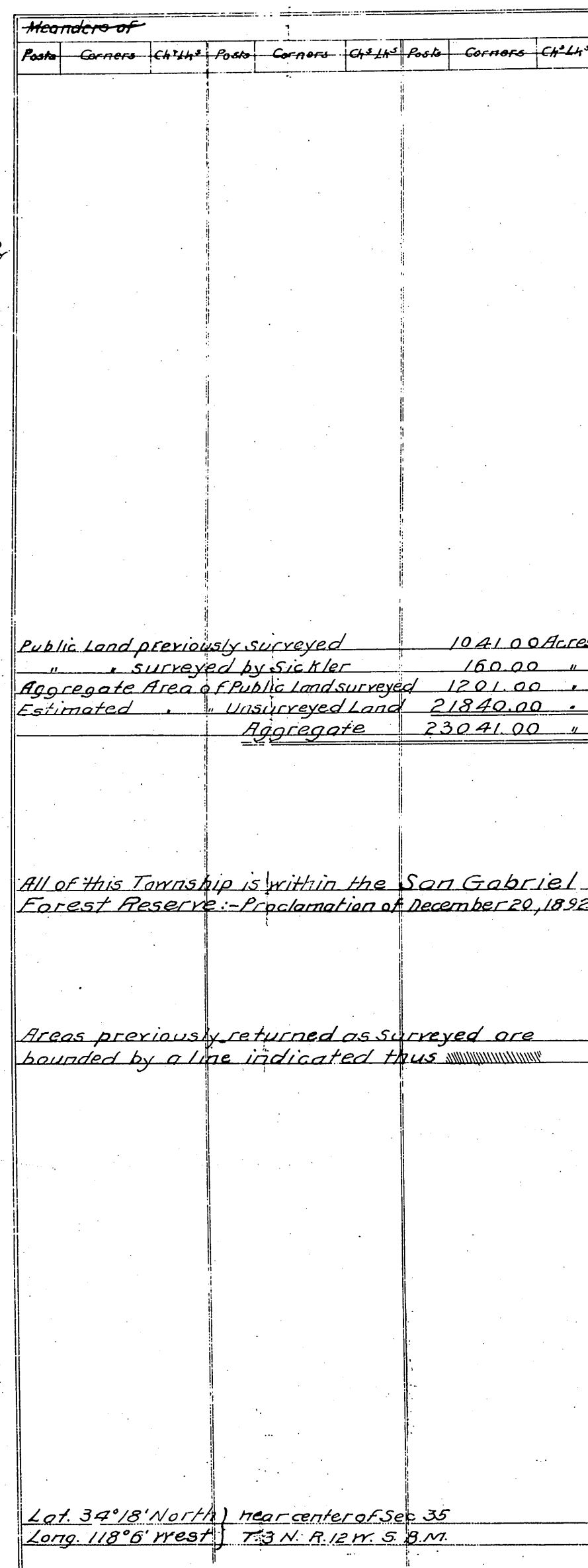
C.S. 9068 - All B'dys. of Sec. 26; E. & N. B'dys. of Sec. 34; and N½ of W. B. Sec. 34  
 C.S. 9069 - All " " Lots 37 and 38  
 C.S. 9070 - S. " " Sec 34 and S½ of W. B'dy. Sec. 34 (Retracement.)

Filed in U. S. Land Office,  
 Los Angeles, Cal. 9 AM

May 20 1908

Register

*Township N<sup>o</sup> 2 North, Range N<sup>o</sup> 12 West, San Bernardino Meridian, California*

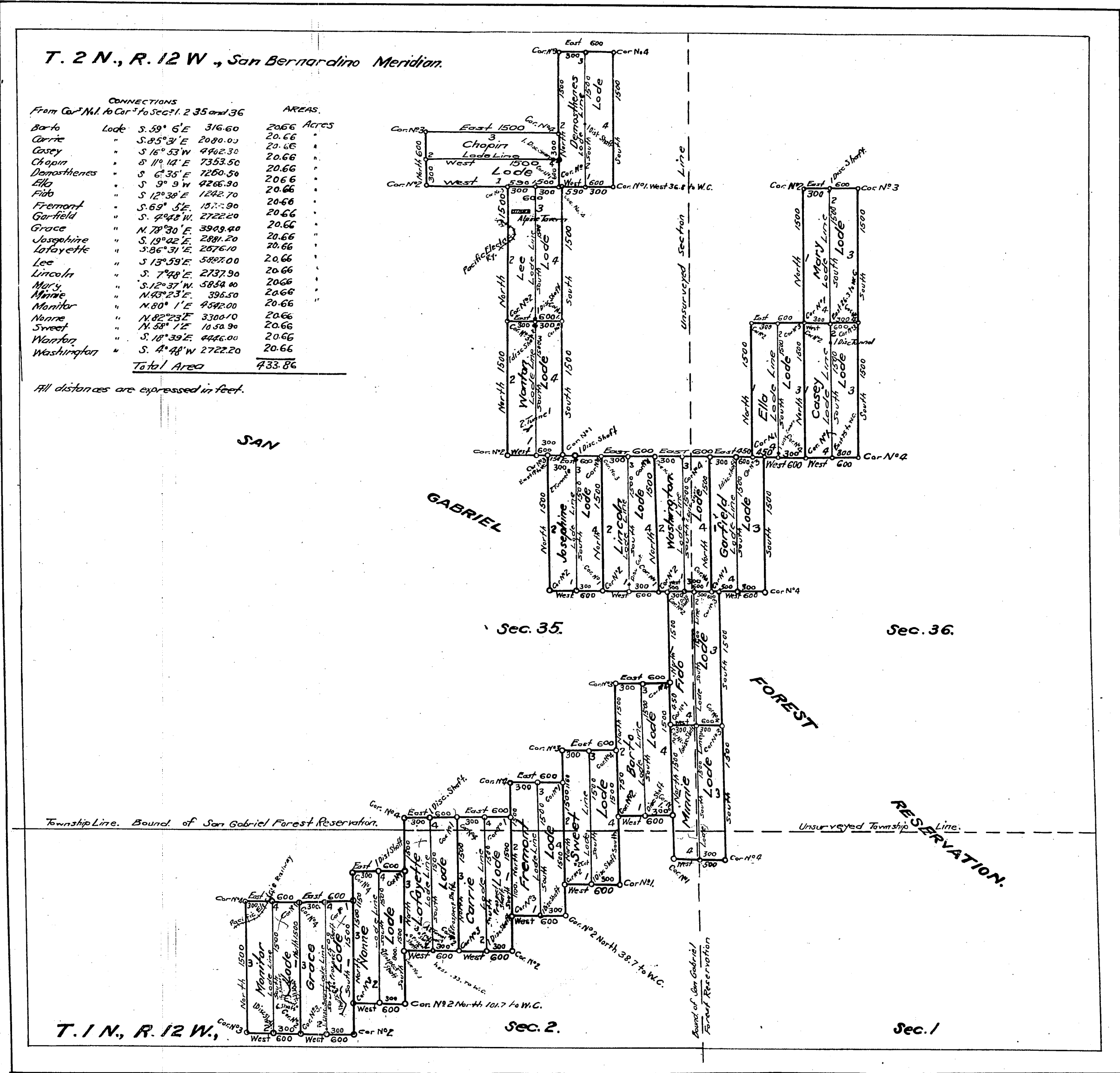


C.S. 9142 - B'dies. Sec. 33

The above Map of Township No 2 North, of Range No 12 West, San Bernardino Meridian California is strictly conformable to the field notes of the survey thereof on file in this Office which have been examined and approved

U. S. Surveyor General's Office }  
San Francisco, California }  
December 14, 1905

U. S. Sur. Gen.  
for California



CLAIMS LOCATED... on various dates  
 " RECORDED... " " "

Mineral Survey No 4237  
 Application for survey dated January 25, 1904  
 LOT No... LAND DISTRICT...  
 Los Angeles

**PLAT**  
 OF THE CLAIM OF  
 THE ANGELS GOLD MINING COMPANY  
 KNOWN AS THE  
 MONITOR CONSOLIDATED LODE CLAIMS.

IN no organized MINING DISTRICT  
 Los Angeles COUNTY California.  
 Containing an Area of 433.86 Acres.  
 Scale of 1000 feet to the inch  
 Variation 14° 30' East  
 SURVEYED January and March 1904 BY  
 John J. Goldsmith  
 U.S. Deputy Mineral Surveyor.

The Original Field Notes of the Survey of the Mining Claim of  
 The Angels Gold Mining Company  
 known as the  
 Monitor Consolidated Lode Claims.

From which this plat has been made under my direction  
 have been examined and approved, and are on file in this Office;  
 and I hereby certify that they furnish such an accurate description  
 of said Mining Claim as will if incorporated into a patent  
 serve fully to identify the premises, and that such references  
 is made therein to natural objects or permanent monuments  
 as will perpetuate and fix the locus thereof.  
 I further certify that five hundred dollars worth of labor has  
 been expended or improvements made upon said Mining  
 Claim by claimant or its grantors, and that  
 said improvements consist of...  
 That the location of said improvements is correctly shown  
 upon this plat, and that no portion of said labor or im-  
 provements has been included in the estimate of expendi-  
 tures upon any other claim.  
 And I further certify that this is a correct plat of said Mining  
 Claim made in conformity with said original field notes of the  
 survey thereof, and the same is hereby approved.

U.S. Surveyor General's Office. *W. S. Graham*  
 San Francisco, California U.S. Surveyor General for  
 May 2, 1904 California

RECEIVED  
 3.40 P.M.  
 U.S. LAND OFFICE  
 LOS ANGELES

Returned to U.S. Surveyor Genl  
 to make tracing Nov. 16, 1906

(Returned to U.S. Surveyor Genl for  
 Correction June 2 1904 - Corrected  
 Returned June 4 1904)

Recorded and filed in U.S. Land  
 office Los Angeles, Cal. May 4, 1904  
*A. J. Cunningham*  
 Register

T 2 N  
R 12 W  
(8)

RECEIVED

AUG 25 1934

U. S. Land Office  
LOS ANGELES, CAL.

Plat of  
**EXCHANGE  
SURVEY**  
No. 320  
in the  
**ANGELES**  
**NATIONAL FOREST**  
in  
Section 31, surveyed, T.2N. R.12W.  
of the  
**SAN BERNARDINO MERIDIAN**  
**CALIFORNIA**

Filed in U. S. Land Office  
Los Angeles, Cal. compliance with C's 23/35  
MAY 29 1935 9 A.M.  
*Paul B. Whitmer*  
Register.

*Gift to this land accepted by  
U.S. Aug 4, 1934 - Govt Land.*

This plat of Exchange Survey  
No. 320 State of California is  
strictly conformable to the field notes  
thereof on file in this office, which  
have been examined and approved.

Public Survey Office  
Glendale, California  
June 14, 1933.

*John Adams*  
Office Cadastral Engineer

Department of the Interior  
General Land Office  
Washington, D.C., June 21, 1933.  
The survey represented by this plat having  
been correctly executed in accordance with  
the requirements of the law and the regulations  
of this office, is hereby accepted.  
*J. K. Gandy*  
Acting Assistant Commissioner

SCALE 1 chain to 1 inch

Exchange Survey No. 320, California, is made for the purpose of  
Identifying a tract of land in the SE 1/4 of Sec. 31 T.2N. R.12W.  
S.B.M., offered in an exchange of land for land in the  
Angeles National Forest, California, under the Act of  
March 20, 1922 ( 42 Stat. 465)

Initials R.E.L.B.  
Comp. F.E.B.

Surveys Designated	By whom Surveyed	Inst. Cont. Group		When Surveyed		Date of Approval
		No.	Date	Begun	Completed	
Exch. Sur. No. 320	W. H. Friedhoff		Apr. 21, 1933	May 1, 1933	May 15, 1933	June 14, 1933
	Regional Forest Inspector					
Subdivisions, Sec. 31	A. W. Von Schmidt		Aug. 7, 1880 and Feb. 25, 1881	1881		Apr. 21, 1881
"	Legrand Friel		Aug. 31, 1908	1909		June 14, 1911

Areas in Acres		
Exch. Survey No. 320		Conflicts
In Section 31	2.06	
In Section		
In Section		
Total	2.06	

Latitude 34° 13' N.  
Longitude 118° 10' W.  
Mean Mag. Decl. 15° 20' E.  
Observations at  
Corner No. 1



# TOWNSHIP N° 2 NORTH, RANGE N° 12 WEST, SAN BERNARDINO MERIDIAN, CALIFORNIA

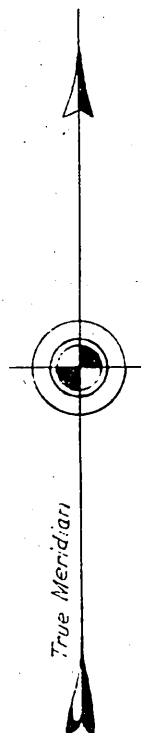
T 2 N  
R 12 W

9

RESURVEY OF SOUTH 3 MILES OF LINE BETWEEN RANGES 12 AND 13 WEST, AND WEST HALF OF NORTH BOUNDARY OF SECTION 31

Surveyed  
by  
S. J. Friel  
in  
1903 and 1905  
Sec. 2

UNSURVEYED



Sec. 24

Sec. 25

Sec. 36

High tension electric power line  
Dark Canyon  
Trail  
To Mt Wilson  
To La Canada  
Firebreak  
Power Line  
SoCal Edison Co  
Gould Substation  
Telephone Line

Surveyed by L. Friel  
in 1909

Sec. 32

Sec. 33

Sec. 34

Sec. 35

Latitude 34° 12' N  
Longitude 118° 10' W

Scale: 40 Chains to an Inch.

LINES DESIGNATED	BY WHOM SURVEYED	GROUP		MILEAGE		WHEN SURVEYED	
		N°	DATE	MLS.	CHS.	BEGUN	COMPLETED
Exterior	John L Warboys	314	Aug. 11, 1937	3	78.91	Nov. 13, 1937	Dec. 4, 1937
Subdivisional	"	"	"		36.02	"	"

Office of Supervisor of Surveys  
Denver, Colorado, January 26, 1938

The above plat of Township No. 2 North, Range No. 12 West of the San Bernardino Meridian, California, is strictly conformable to the field notes of the survey thereof which have been examined and approved

*Supervisor of Surveys*

UNITED STATES  
DEPARTMENT OF THE INTERIOR  
GENERAL LAND OFFICE  
Washington, D.C., Aug. 12, 1938

The survey represented by this plat having been correctly executed in accordance with the requirements of law and the regulations of this office, is hereby accepted

*Assistant Commissioner*

ORIGINAL

# TOWNSHIP 1 AND 2 NORTH, RANGE 18 WEST, OF THE SAN BERNARDINO MERIDIAN, CALIFORNIA.

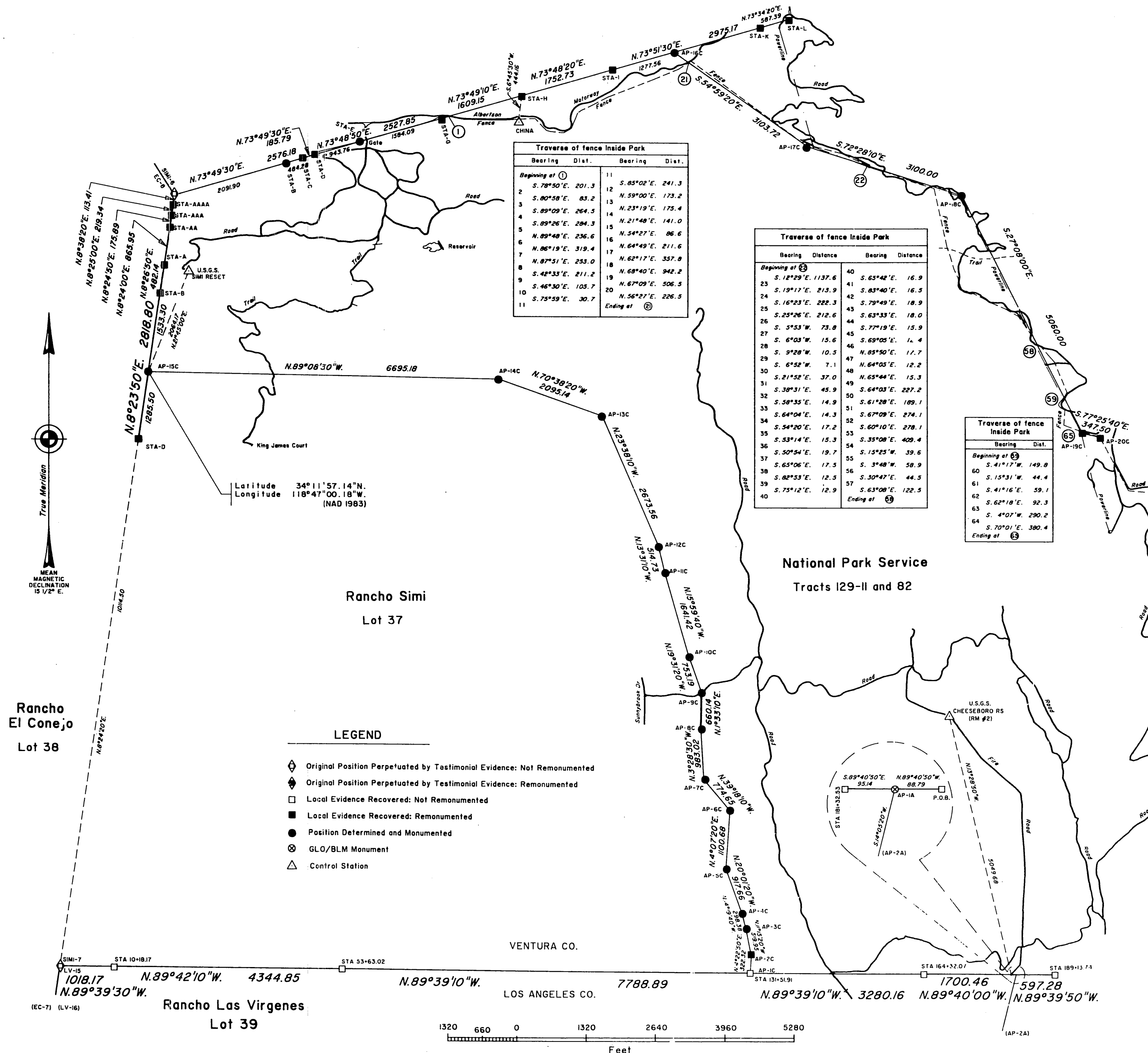
## DEPENDENT RESURVEY AND METES-AND-BOUNDS SURVEY

A history of surveys is contained in the field notes.

This plat represents the dependent resurvey of a portion of Rancho Simi, and the metes-and-bounds survey of a portion of the Santa Monica Mountains National Recreation Area Boundary, in Townships 1 and 2 North, Range 18 West, San Bernardino Meridian, California.

The topographic features shown on this plat were compiled using resource grade global positioning system (GPS) satellite receivers, with a published system precision of  $\pm 15$  ft.

Survey was executed by David H. Haller, Cadastral Surveyor, beginning October 14, 1993, and completed July 22, 1994, pursuant to Special Instructions dated September 17, 1990, and Supplemental Special Instructions No.1, dated December 17, 1993, for Group No. 1093.



UNITED STATES DEPARTMENT OF THE INTERIOR  
BUREAU OF LAND MANAGEMENT  
Sacramento, California

This plat is strictly conformable to the approved field notes, and the survey, having been correctly executed in accordance with the requirements of law and the regulations of this Bureau, is hereby accepted.

For the Director  
*James F. Rakey* June 16, 1998  
Chief Cadastral Surveyor-California