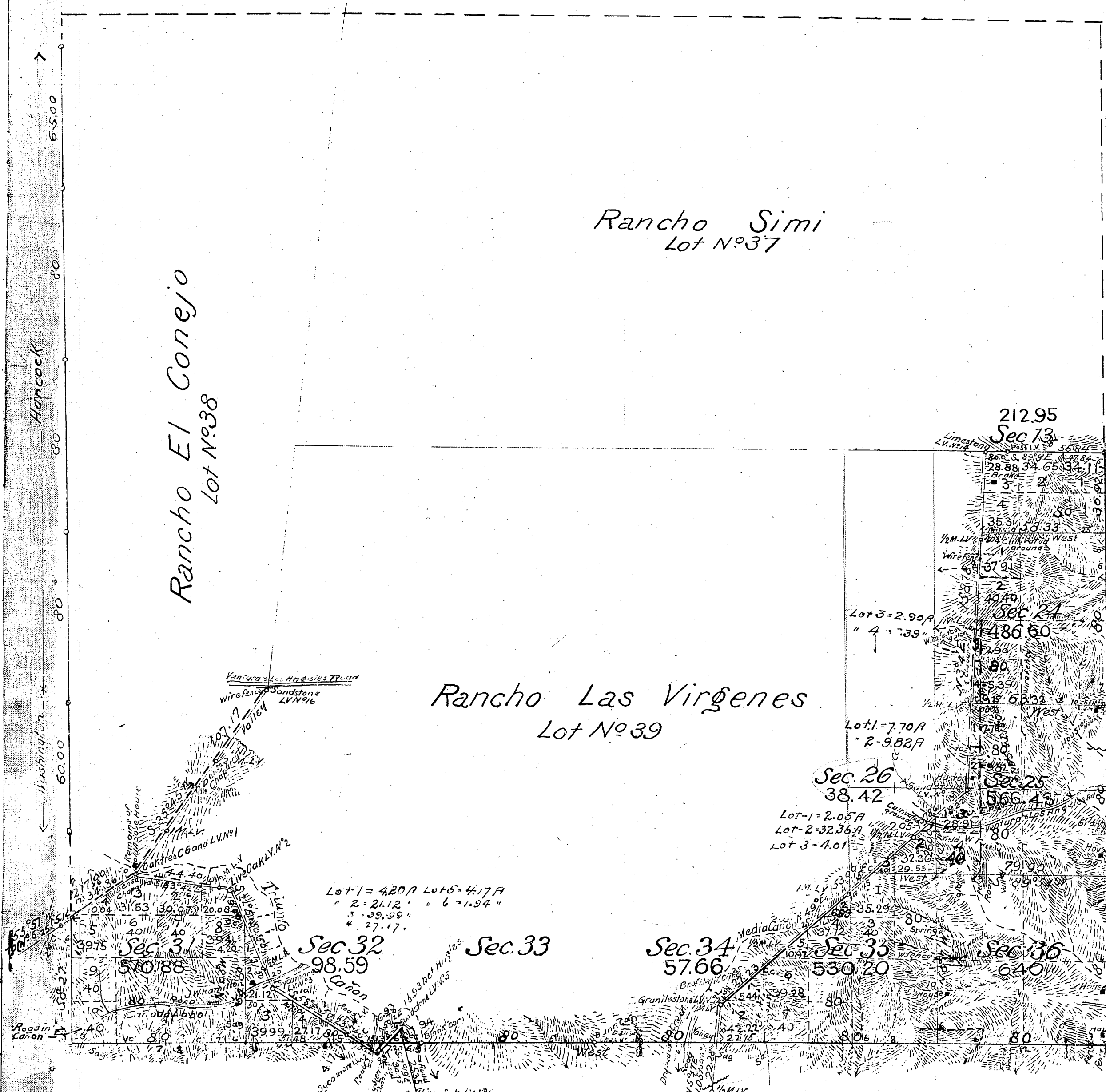


Township N<sup>o</sup> 1 North, Range N<sup>o</sup> 18 West, San Bernardino Meridian California

TIN  
R18W  
①

Gov't. Field Notes.  
C.S. 9082, E.S. & W. sides of Ro. Los Virgenes,  
Secs. 13, 24, 25, 26, 31, 32, 33, 34, 35, 36  
C.S. 9119 ——— South Boundary  
of Rancho "Simi."  
Interior lines & part of E. bdy —  
C.S. 9271



Surveys Designated	By whom surveyed	Contract		Amount of Surveys			When surveyed
		N <sup>o</sup>	Date	MIS	CHS	LKS.	
Boundaries of Lot N <sup>o</sup> 37	J. E. Terrell	1st	Aug. 1. 1860	—	—	—	1861
" " " " " 38	" " "	"	"	—	—	—	1861
" " " " " 39	W. Minto	"	May 9. 1882	—	—	—	1882
Port of W. bdy of Township	H. Washington	"	Oct 4. 1852	—	—	—	1853
" " " " "	H. Hancock	"	Oct 1. 1857	—	—	—	1858
" " " " "	J. R. Glover	33.	Nov. 20. 1884	—	—	—	1895
" " " " " resurvey	" " "	"	"	—	—	—	"
Base Line, new	J. R. Glover	129	July 2. 1896	6	00	00	1896
Port of W. bdy of Township	" " "	"	"	5	58	27	"
Section lines, new	" " "	"	"	1	28	07	"
Connecting lines	" " "	"	"	1	44	40	Aug. 28. 1897
Ranch bdy resurvey	J. R. Glover	1st	Sep 7. 1896	7	68	45	Aug 27. 1897

The above Map of Township N<sup>o</sup> 1 North Range N<sup>o</sup> 18 West, San Bernardino Meridian, is strictly conformable to the field notes of the surveys thereof, on file in this have been examined and approved.  
U.S. Surveyor General's Office,  
San Francisco, California  
June 14th 1898

J. M. Leaves  
U.S. Sur. Genl. for California

DEPENDENT RESURVEY, SUBDIVISION OF FRACTIONAL SECTION 24 AND METES-AND-BOUNDS SURVEY



Survey was executed by David H. Haller, Cadastral Surveyor, beginning September 17, 1990, and completed January 3, 1994, pursuant to Special Instructions dated September 17, 1990, for Group No. 1093, California.

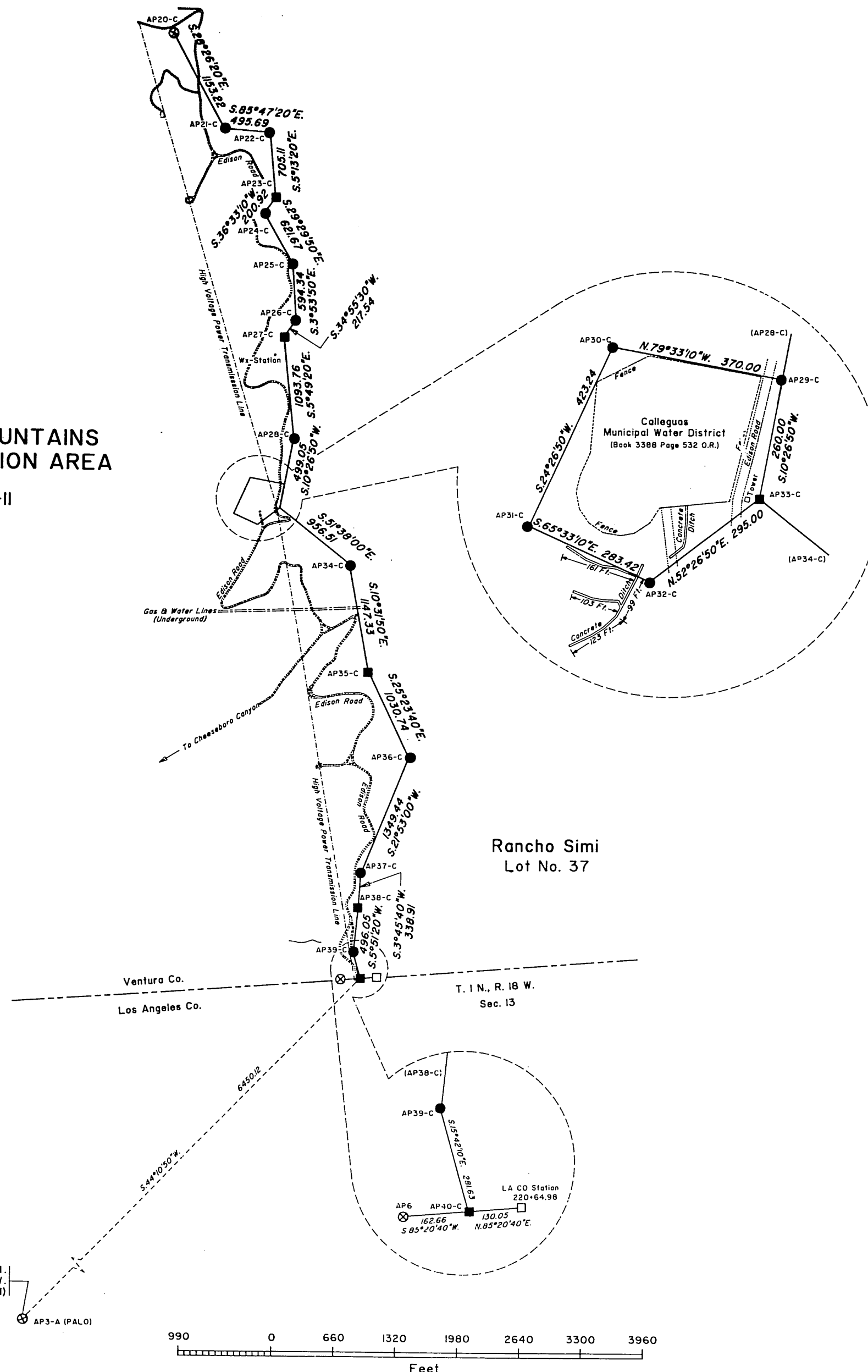
For the Director  
February 9, 1998  
James J. Bink  
Chief Cadastral Surveyor-California

# TOWNSHIP 1 NORTH, RANGE 18 WEST, OF THE SAN BERNARDINO MERIDIAN, CALIFORNIA.

ORIGINAL

## METES-AND-BOUNDS SURVEY

SANTA MONICA MOUNTAINS  
NATIONAL RECREATION AREA  
NPS Tract 129-II



### LEGEND

- Local Evidence Recovered: Not Remonumented
- Local Evidence Recovered: Remonumented
- Position Determined and Monumented
- ⊗ GLO/BLM Monument

Latitude 34°09'20.185\"/>

A history of surveys is contained in the field notes.

This plat represents the metes-and-bounds survey of a portion of the Santa Monica Mountains National Recreation Area Boundary, National Park Service (NPS) Tract No. 129-11, Township 1 North, Range 18 West, San Bernardino Meridian, California

The plotted topographic features shown on this plat were compiled using resource grade global positioning system (GPS) satellite receivers with a published system precision of  $\pm 15$  ft.

Survey was executed by David H. Haller, Cadastral Surveyor, beginning November 28, 1996 and completed February 28, 1997, pursuant to Special Instructions dated September 17, 1990 and Supplemental Special Instructions No. 2 dated January 13, 1997, for Group No. 1093, California.

UNITED STATES DEPARTMENT OF THE INTERIOR  
BUREAU OF LAND MANAGEMENT  
Sacramento, California

This plat is strictly conformable to the approved field notes, and the survey, having been correctly executed in accordance with the requirements of law and the regulations of this Bureau, is hereby accepted.

For the Director

*Lucy J. Ruby* April 14, 1998  
Chief Cadastral Surveyor-California

ORIGINAL

# TOWNSHIP 1 AND 2 NORTH, RANGE 18 WEST, OF THE SAN BERNARDINO MERIDIAN, CALIFORNIA.

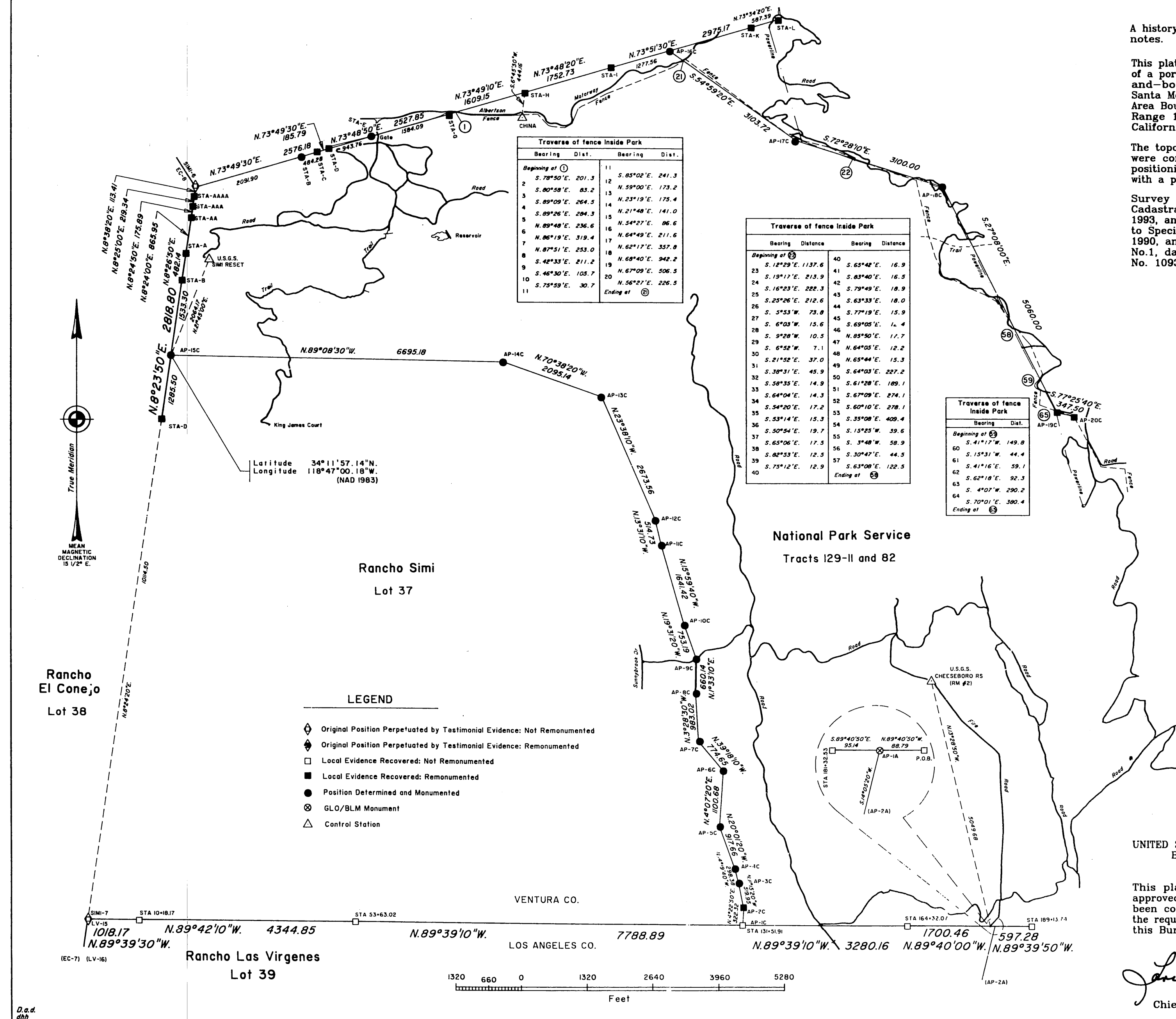
## DEPENDENT RESURVEY AND METES-AND-BOUNDS SURVEY

A history of surveys is contained in the field notes.

This plat represents the dependent resurvey of a portion of Rancho Simi, and the metes-and-bounds survey of a portion of the Santa Monica Mountains National Recreation Area Boundary, in Townships 1 and 2 North, Range 18 West, San Bernardino Meridian, California.

The topographic features shown on this plat were compiled using resource grade global positioning system (GPS) satellite receivers, with a published system precision of  $\pm 15$  ft.

Survey was executed by David H. Haller, Cadastral Surveyor, beginning October 14, 1993, and completed July 22, 1994, pursuant to Special Instructions dated September 17, 1990, and Supplemental Special Instructions No.1, dated December 17, 1993, for Group No. 1093.



UNITED STATES DEPARTMENT OF THE INTERIOR  
BUREAU OF LAND MANAGEMENT  
Sacramento, California

This plat is strictly conformable to the approved field notes, and the survey, having been correctly executed in accordance with the requirements of law and the regulations of this Bureau, is hereby accepted.

For the Director  
*James G. Richey* June 14, 1998  
Chief Cadastral Surveyor-California

ORIGINAL

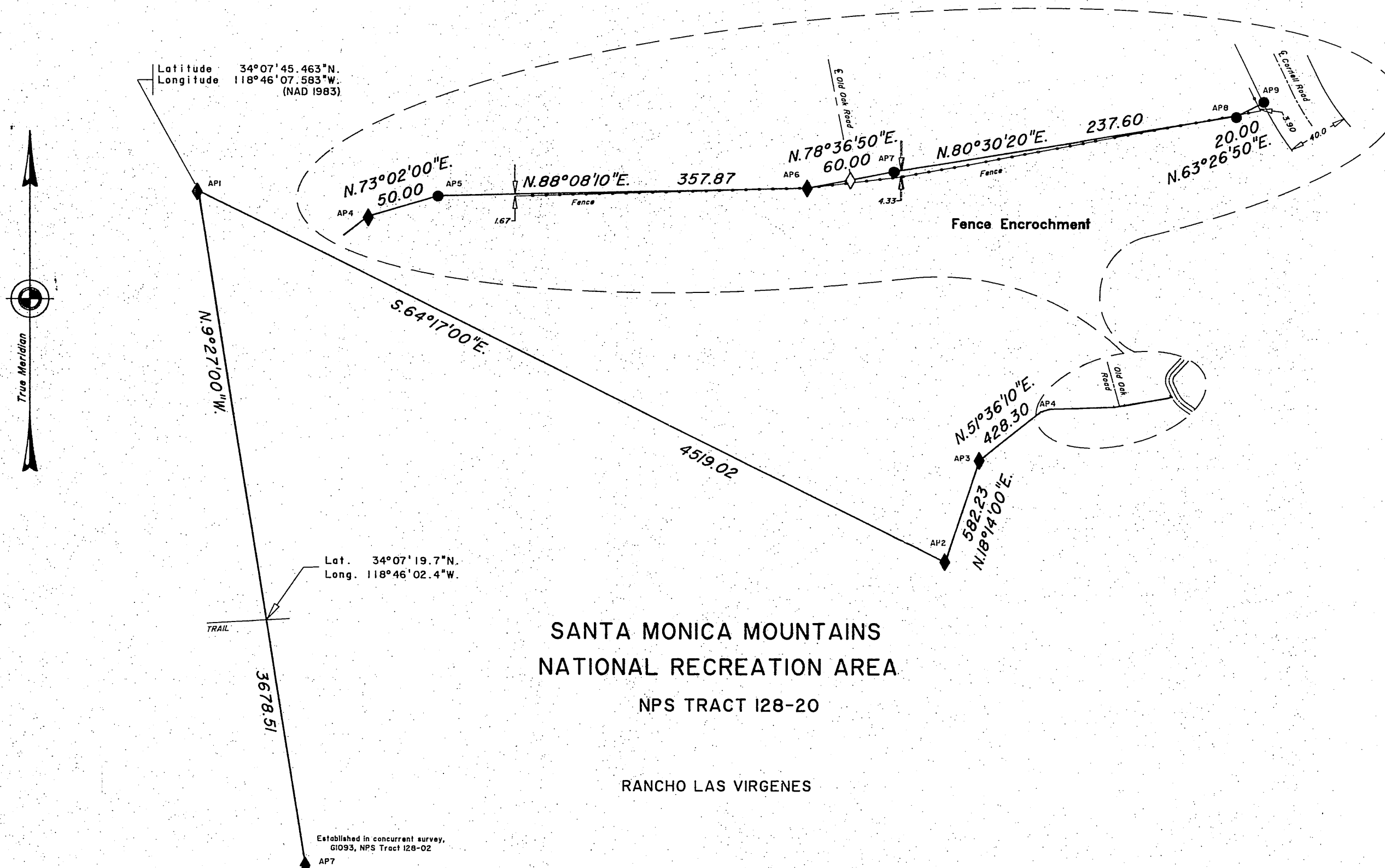
# TOWNSHIP 1 NORTH, RANGE 18 WEST, OF THE SAN BERNARDINO MERIDIAN, CALIFORNIA.

## METES-AND-BOUNDS SURVEY IN RANCHO LAS VIRGENES

A history of surveys is contained in the field notes.

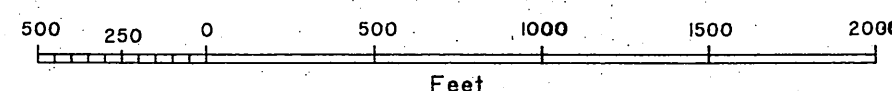
This plat represents the metes-and-bounds survey of a portion of the Santa Monica Mountains National Recreation Area boundary, National Park Service (NPS) Tract No. 128-20, Township 1 North, Range 18 West, San Bernardino Meridian, California.

Survey was executed by Richard Houston Cadastral Surveyor, beginning May 22, 2000, and completed August 31, 2000, pursuant to Special Instructions dated May 18, 2000, for Group No. 1349, California, and Supplemental Special Instructions No. 1 dated August 4, 2000.



### LEGEND

- ◇ Original Evidence Recovered: Not Remonumented
- ◆ Original Evidence Recovered: Remonumented
- Local Evidence Recovered: Not Remonumented
- Local Evidence Recovered: Remonumented
- Position Determined and Monumented



UNITED STATES DEPARTMENT OF THE INTERIOR  
BUREAU OF LAND MANAGEMENT  
Sacramento, California

This plat, having been correctly prepared in accordance with the requirements of law and this Bureau, is hereby accepted.

For the Director

James B. McCarroll  
July 1, 2002

ACTING Chief Cadastral Surveyor-California

D.a.d.  
RLH



ORIGINAL

SHEET 1 OF 2 SHEETS

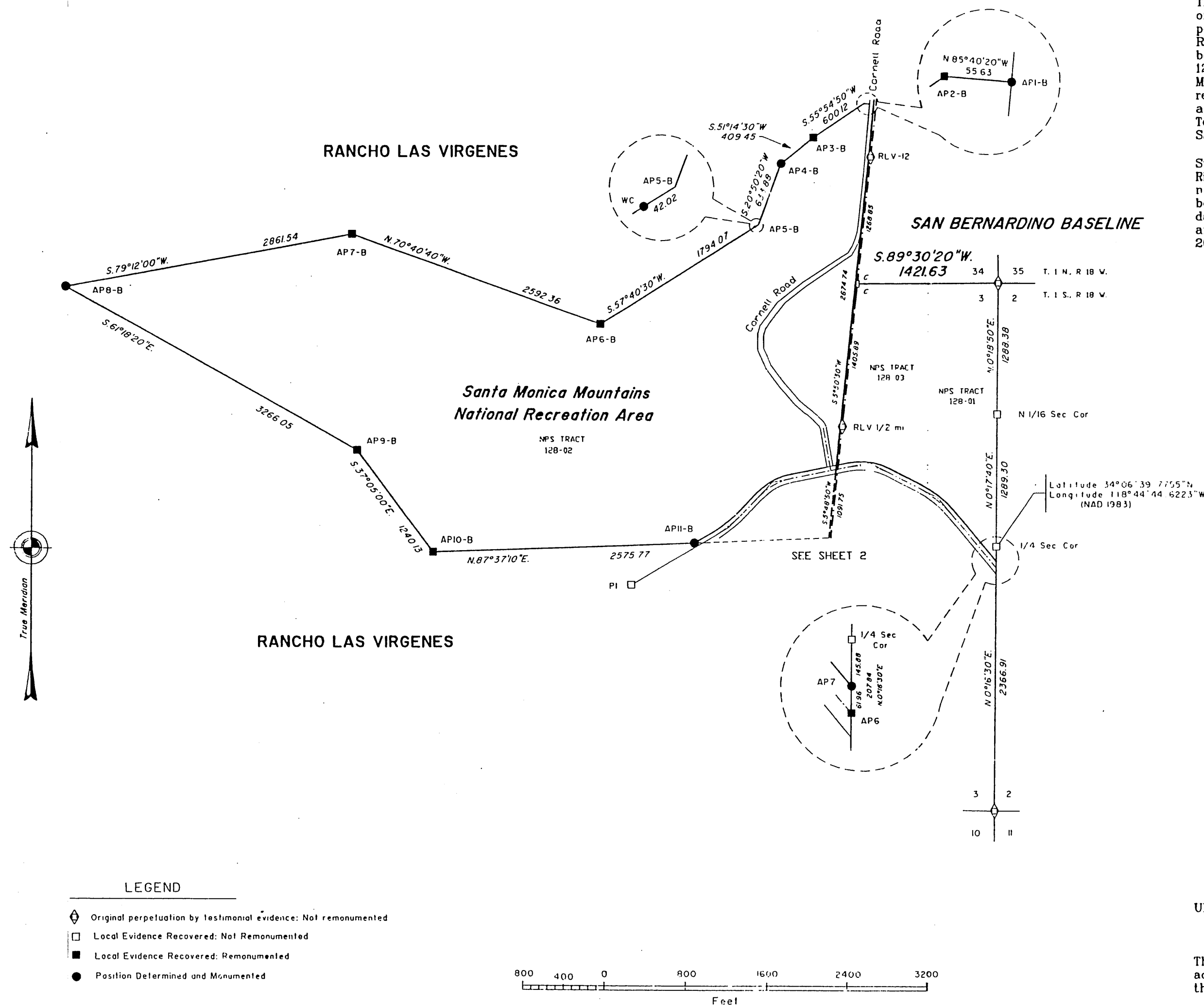
# TOWNSHIPS 1 NORTH AND 1 SOUTH, RANGE 18 WEST, OF THE SAN BERNARDINO MERIDIAN, CALIFORNIA.

## DEPENDENT RESURVEY AND METES-AND-BOUNDS SURVEY

A history of surveys is contained in the field notes.

This plat represents the dependent resurvey of a portion of the San Bernardino Baseline, a portion of the subdivisional lines, a portion of Rancho Las Virgenes, and a metes-and-bounds survey of National Park Service Tracts 128-01, 128-02, and 128-03, of the Santa Monica Mountains National Recreation Area, designed to restore the corners in their true original locations according to the best available evidence, Townships 1 North and 1 South, Range 18 West, San Bernardino Meridian, California.

Survey was executed by David H. Haller and Richard L. Houston, Cadastral Surveyors, beginning January 7, 1991 and completed November 15, 2001, pursuant to Special Instructions dated September 17, 1990, for Group No. 1093, and Assignment Instructions dated July 18, 2002, California.



UNITED STATES DEPARTMENT OF THE INTERIOR  
BUREAU OF LAND MANAGEMENT  
Sacramento, California

This plat, having been correctly prepared in accordance with the requirements of law and this Bureau, is hereby accepted.

For the Director

*James B. McCarth* ACTING  
October 29, 2003  
Chief Cadastral Surveyor-California

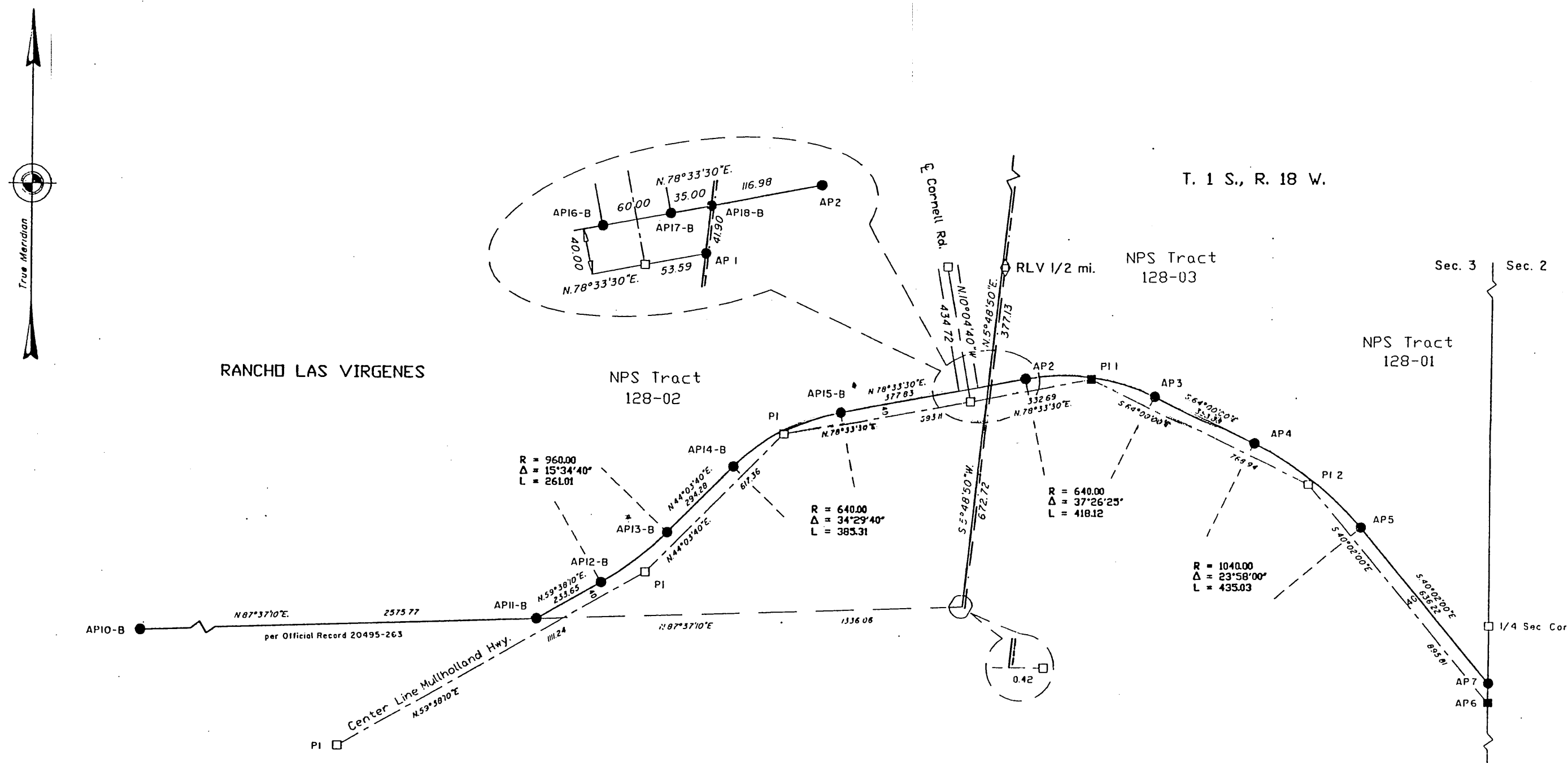
ORIGINAL

SHEET 2 OF 2 SHEETS

# TOWNSHIPS I NORTH AND I SOUTH, RANGE 18 WEST, OF THE SAN BERNARDINO MERIDIAN, CALIFORNIA.

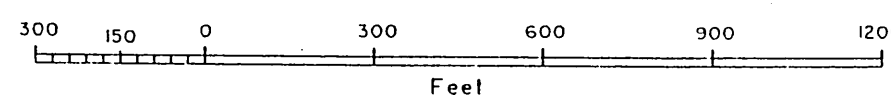
## DEPENDENT RESURVEY AND METES-AND-BOUNDS SURVEY

Reference should be made to Sheet No. 1 for survey information.



### LEGEND

- Original Position Perpetuated by Testimonial Evidence: Not Remonumented
- Local Evidence Recovered: Not Remonumented
- Local Evidence Recovered: Remonumented
- Position Determined and Monumented



UNITED STATES DEPARTMENT OF THE INTERIOR  
BUREAU OF LAND MANAGEMENT  
Sacramento, California

This plat, having been correctly prepared in accordance with the requirements of law and this Bureau, is hereby accepted.

For the Director

*James B. McCarty* ACTING  
October 29, 2003  
Chief Cadastral Surveyor-California

RES  
RLH  
TLL